

Internet of Things:

from intelligent to smart building

HKIE Veneree Club Talk

DR ABRAHAM LAM

2017/10/18



MEGA
AUTOMATION

About the speaker



Dr. Abraham Lam
林恒一 博士

Affiliations

- ❖ PhD (Hong Kong Polytechnic University)
- ❖ Founder of MEGA Automation (HK) & FUSQUARE (China)
- ❖ ASHRAE 2016-2018 Electronic Communication Chair
- ❖ Hon Secretary of iEthics

Latest Publications

- ❖ (TII '16) Asynchronous and Selective Transmission for DeWiring of Building Management Systems
- ❖ (APCBE '15) Occupant-participatory Approach to Enhance Thermal Comfort
- ❖ (e-energy '14) An Occupant-participatory Approach for Thermal Comfort Enhancement and Energy Conservation in Buildings
- ❖ (BuildSys '13) Carrying My Environment with Me: A Participatory-sensing Approach to Enhance Thermal Comfort

80%

Time in buildings

65%

Electricity used in buildings

54%

Consumed by HVAC system

An aerial night view of a dense city skyline, likely Hong Kong, showing numerous skyscrapers and buildings illuminated with lights. The text "In Hong Kong, it's all buildings!" is overlaid in large yellow font on the left side of the image.

**In Hong Kong,
it's all buildings!**

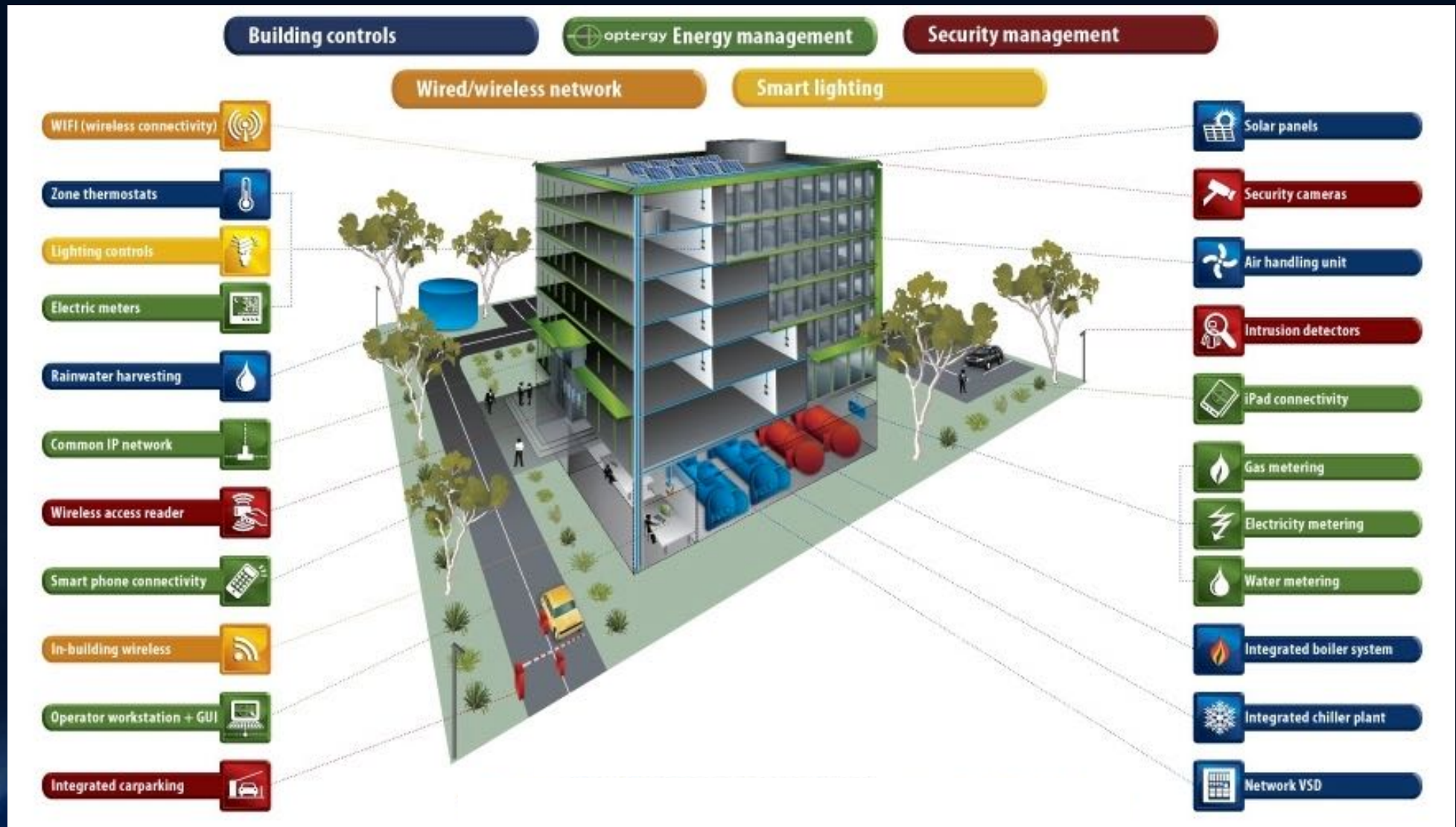
Power Off Everything !



2017 全球響應關燈愛地球

永續山林 生態城市 無塑海洋

Behind the scene...



Building Automation system

❖ Monitoring & controlling of building systems

- HVAC
- Fires
- Lighting
- Lifts & escalators
- Measuring meters
- Sensors & actuators



Too many systems...



What's worse...

- ❖ Different systems cannot talk with others
- ❖ Maintenance Difficulties
- ❖ Unable to conduct system optimization
- ❖ Low flexibility for retrofit
- ❖ Vendors lock-in



Source: <http://www.bacnet.org/Tutorial/HMN-Overview/sld002.htm>

Moreover...

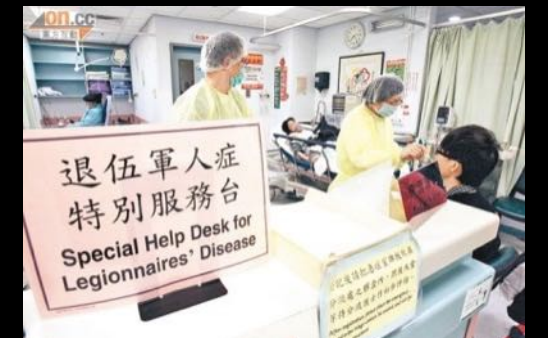
- ❖ Improper management to building facilities leads to
 - Sick building syndrome (病態建築綜合症)
 - Inefficient energy use
 - Rise of energy bill
 - Higher CO₂ emission



部份退伍軍人症桿菌超標水塔

| 地點 | 含菌量 (每毫升菌落) | 超標 |
|------------------------|----------------|--------|
| 荃灣德士古道 聯合貨運中心 | 約 18,000 | 17.0 倍 |
| 大埔工業村 大順街 11 至 13 號 | 約 8,000 | 7.0 倍 |
| 黃大仙環鳳街鳳祥樓 | 約 4,400 | 3.4 倍 |
| 沙田新翠邨商場 | 約 3,600 | 2.6 倍 |
| 何文田愛民商場 | 約 2,800 | 1.8 倍 |
| 黃大仙新光中心 | 約 3,200 | 1.2 倍 |

* 上限為每毫升 1,000 菌落 資料來源：機電署



Emergence of intelligent buildings

Timeline

1980s



Paper Document



1990s

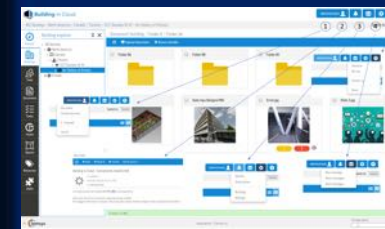


BMS System

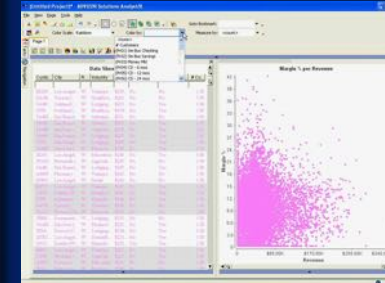


2000s

Document Management



Analytics

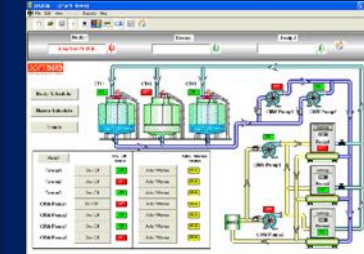


Energy Management

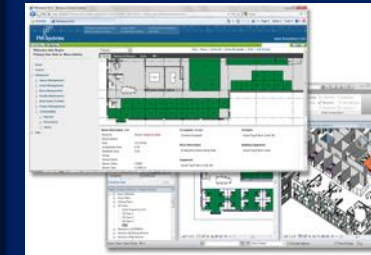


NOW

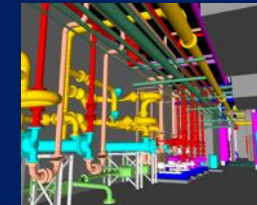
System Optimization



Planning

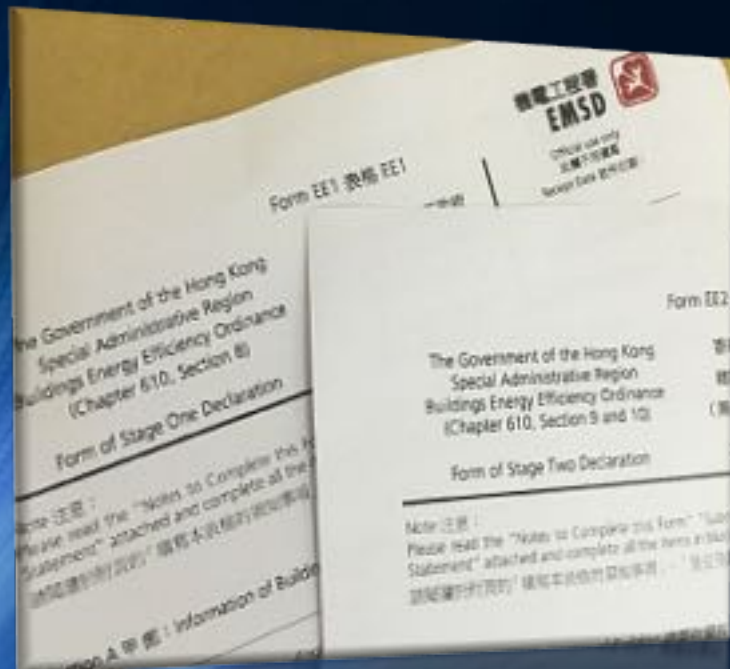


BIM modeling



Energy Audit Code

- ❖ Building Energy Efficiency Ordinance (Cap.610)
- ❖ Covers A/C, electrical, lighting & escalator
- ❖ **ALL** HK commercial buildings!



《建築物能源效益條例》
於**2012年9月21日**起全面實施
The Buildings Energy Efficiency Ordinance
comes into full operation on **21 September 2012**

空調裝置
Air-conditioning installation

照明裝置
Lighting installation

電力裝置
Electrical installation

升降機及自動梯裝置
Lift & escalator installation

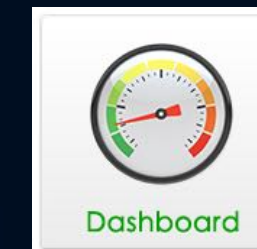
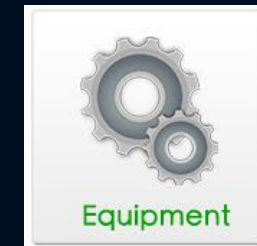
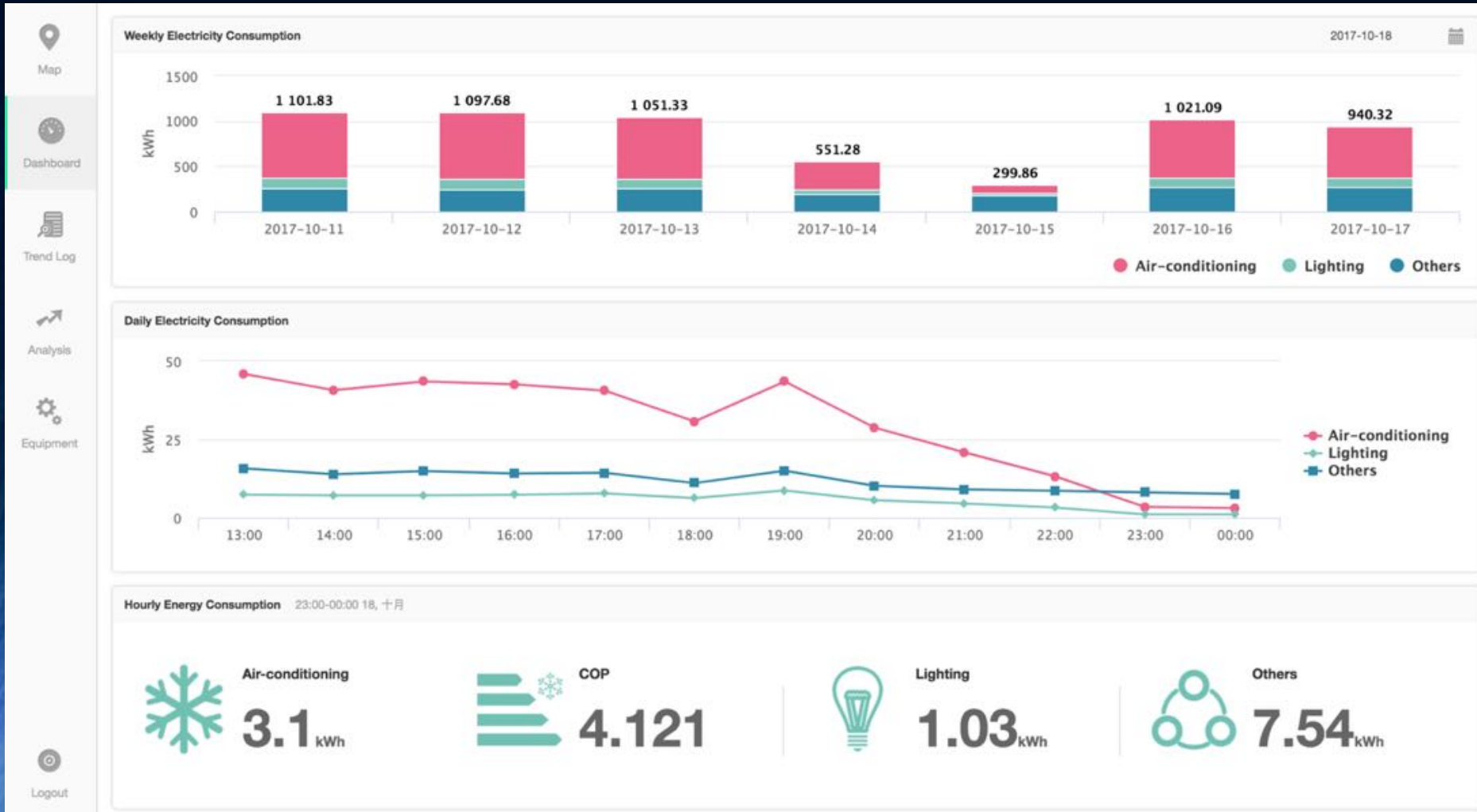
Energy Audit Form
能源審核表格

- 屋宇裝備裝置須符合建築物能源效益守則。
- 商業大廈業主須每十年進行一次能源審核。
- 有關詳情，請參閱機電工程署網頁：
<http://www.emsd.gov.hk>

- Building services installations should comply with the Building Energy Code.
- Owners of commercial buildings should undergo energy audits once every 10 years.
- For details, please visit EMSD's webpage:
<http://www.emsd.gov.hk>

機電工程署
EMSD

Energy Management



Institutional-driven

❖ Green building design and assessment

➤ Hong Kong

- BEAM Plus
- Building Energy Codes



➤ China

- Evaluation standard for green building (绿色建筑评价标准) GB/T 50738-2006
- China Green Building Label (中国绿色建筑标识)



➤ International

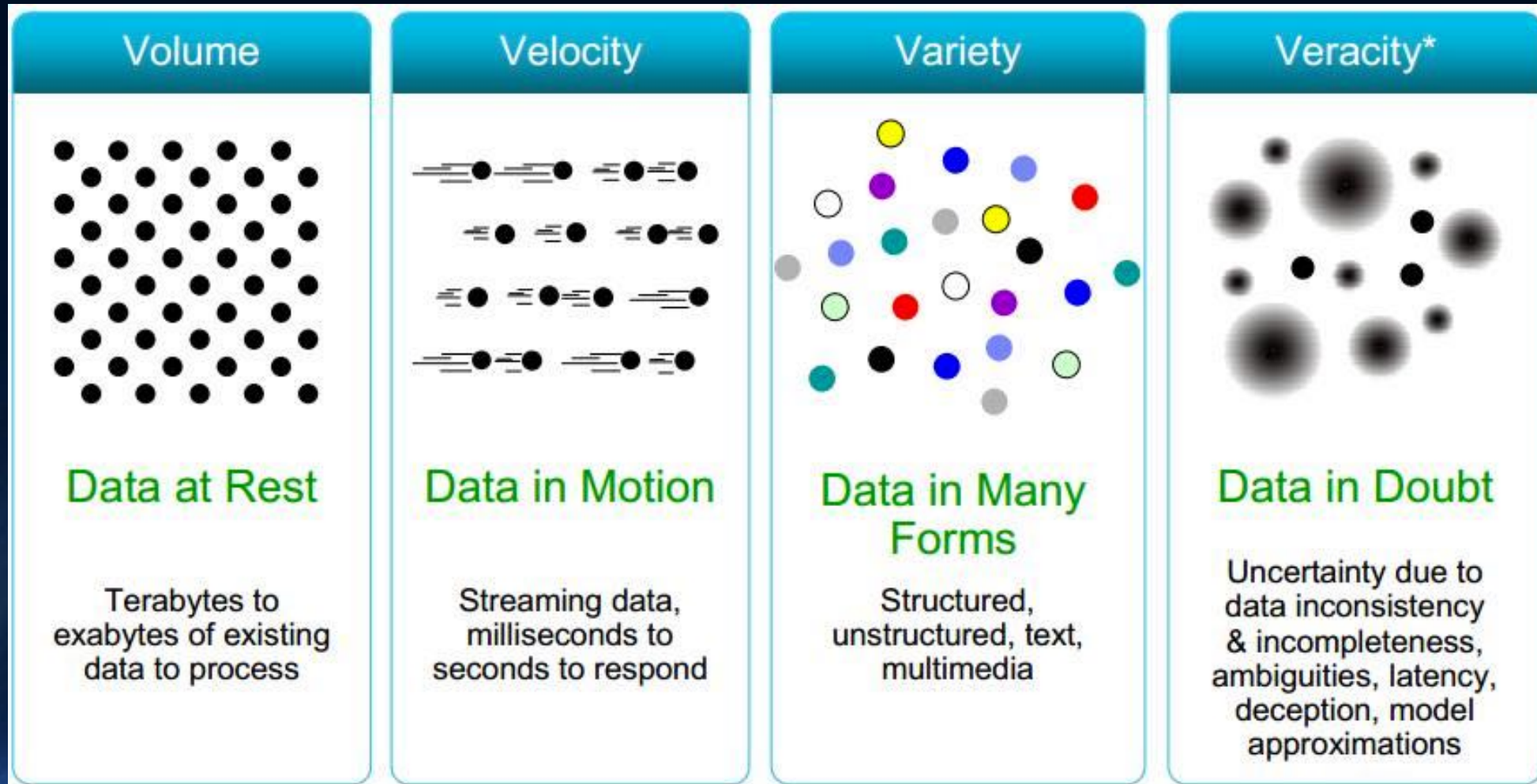
- ISO 50001
- LEED



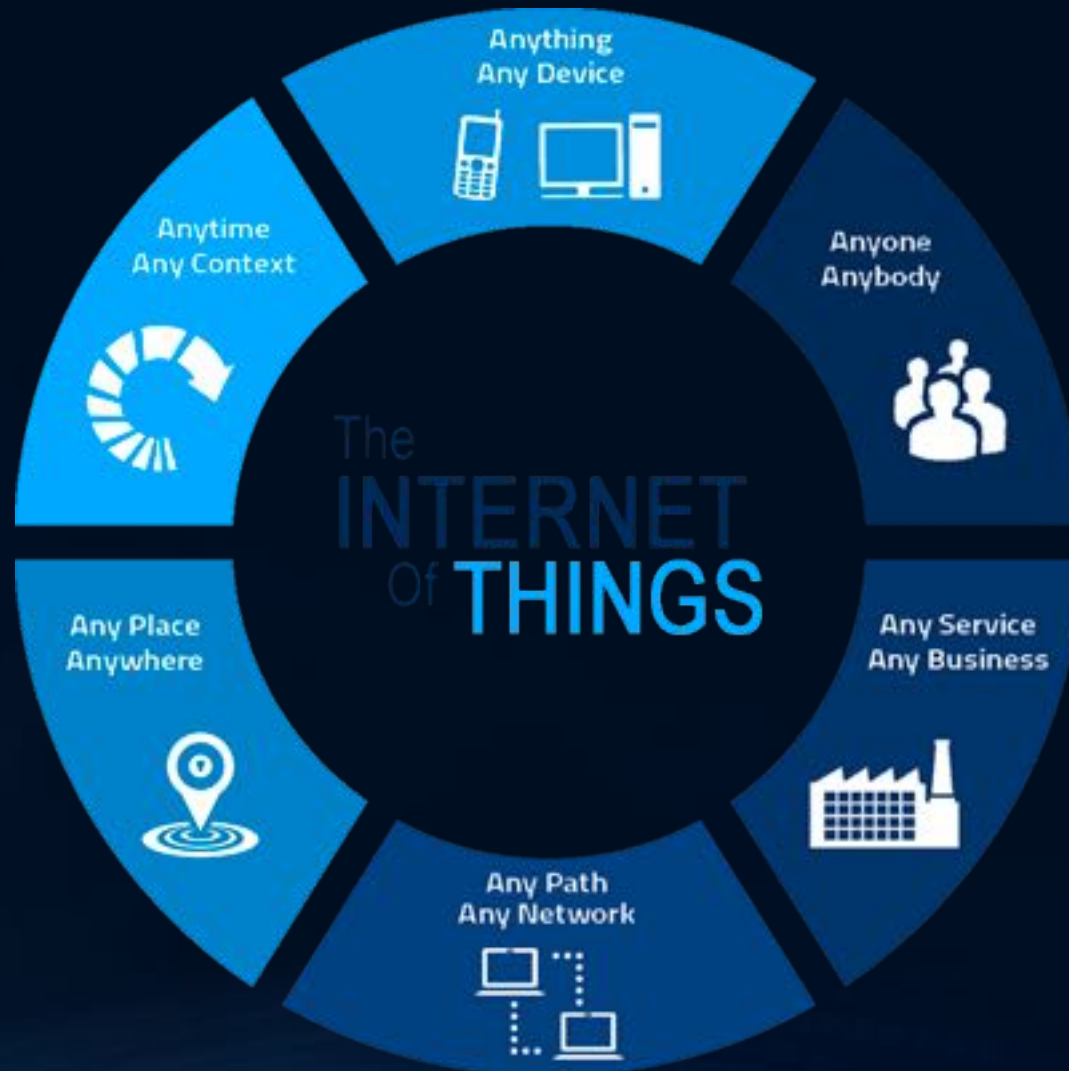
What's required behind ...



Data Flooding – 4V



The era of IoT - Connecting the unconnected



The Internet of Things

The Internet of Things (IoT) connects machines and devices to one another. IoT can help all industries become more efficient, productive and safer.

To become connected an object must be able to:



2003-2010:

10 - 20 BILLION

things connected to the internet today⁽¹⁾



By 2020 this number is estimated to grow to

40 - 50 BILLION⁽¹⁾



That's roughly 5 connected devices per person on earth!

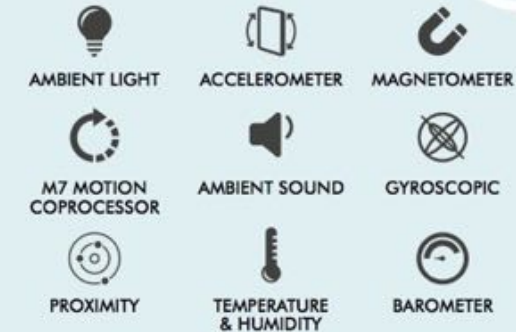
The Rise of Sensors

Sensors enable IoT. Every object, even the human body.



Anything that is hard to monitor can become easy.

Today's devices have between 6-9 sensors:



The opportunities generated by IoT far outweigh the risks

For businesses to fully realize the great potential of IoT, they will need to be prepared for the risks that lie ahead.

The insurance industry is well positioned to help businesses navigate an IoT world.

IoT Risks:



Industries currently benefitting from IoT:



Safety Driverless cars, worker accident prevention **Efficiency** Biometric banking, smart TVs & thermostats

Decision Making Data driven insights **Infrastructure** Risk triggers, electrical networks & predictive maintenance

A New Economic Age

The 2020 annual global economic potential across all sectors is estimated up to

\$14.4 TRILLION⁽³⁾

That is the current GDP of the European Union!



Cost of an Accelerometer

2007 1 Axis:

\$7⁽²⁾

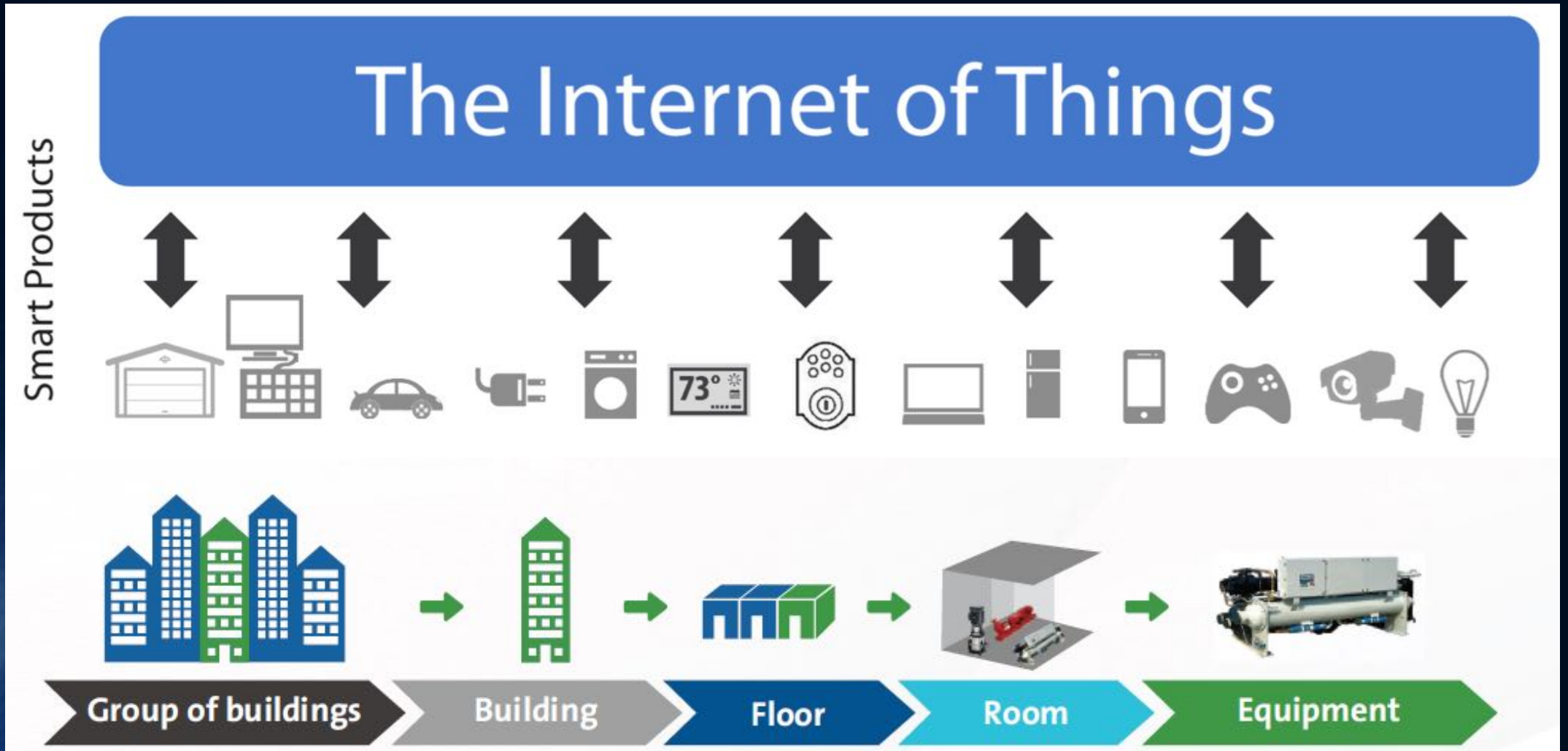
Today 6 Axis:

\$0.5

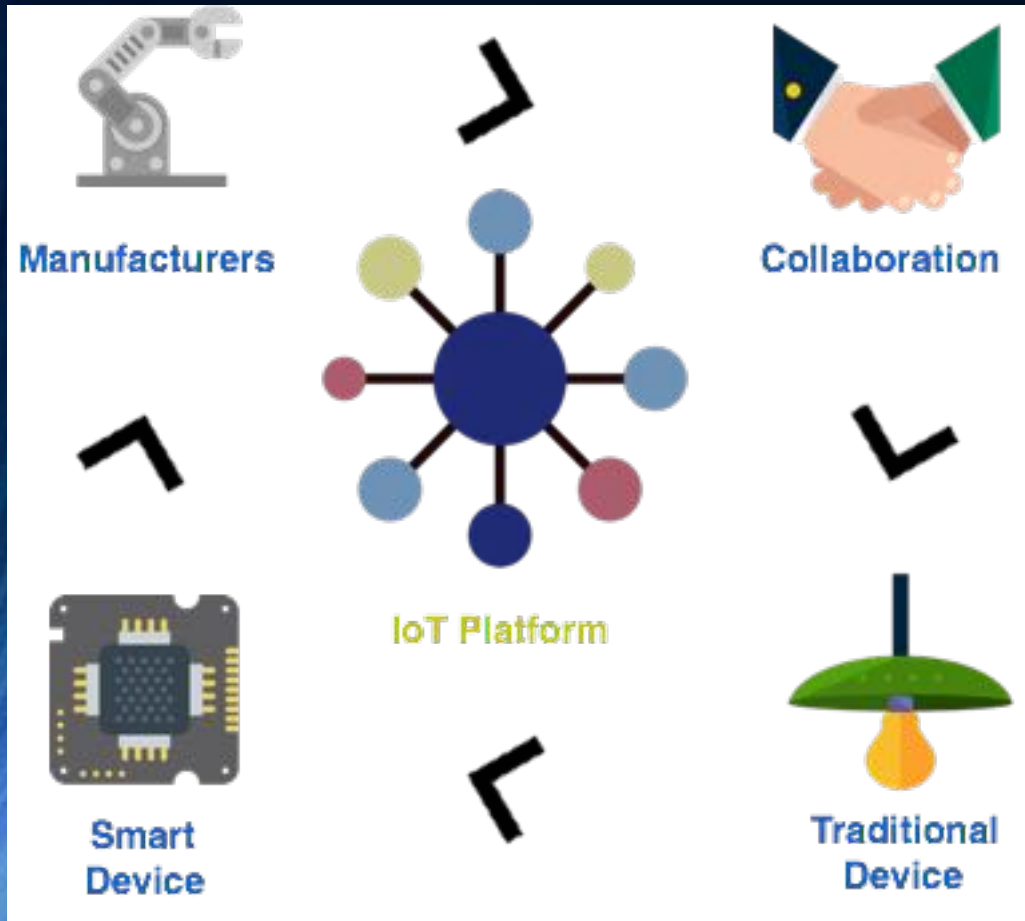
Cheap sensors are accelerating the growth of IoT.

The decrease in cost of sensors has fuelled the number of connected devices:

IoT @ smart buildings



Case 1: New maintenance services model



What common problem we face today?

要聞港聞 2005年06月27日 | 香港新聞/車感之都

舉報冷氣太凍 17日200宗 香港被謔凍感之都

【本報訊】香港已由「動感之都」變為「凍感之都」，環保團體「地球之友」呼籲市民舉報室內冷氣溫度調得過低的場所，短短十七天已接獲二百多宗投訴。其中最底溫的為一酒樓男廁，溫度只有攝氏十六度，而負責推動本港旅遊業的香港旅遊發展局，其位於尖沙嘴的旅客諮詢及服務中心，室溫也只有十九度，是名副其實的「城市雪房」。

記者：郭中礎、謝穎詩、林社勇



市民體驗
「舉報坐巴士人少，覺得特別凍，無論你坐邊個位都會覺得寒氣逼人，如果無件外套一定凍唔住。」
廖小姐 30% 30% 30% 巴士乘客

本報訊 香港已由「動感之都」變為「凍感之都」，環保團體「地球之友」呼籲市民舉報室內冷氣溫度調得過低的場所，短短十七天已接獲二百多宗投訴。其中最底溫的為一酒樓男廁，溫度只有攝氏十六度，而負責推動本港旅遊業的香港旅遊發展局，其位於尖沙嘴的旅客諮詢及服務中心，室溫也只有十九度，是名副其實的「城市雪房」。

記者：郭中礎、謝穎詩、林社勇



「新會選擇坐機下較多，因為食客行出入，走緊部份冷氣就唔會覺得太凍。」
馮先生 網記乘客

「有時天氣特別熱，所以入到酒店，都唔覺空調溫度好凍。」
胡先生 偶爾光顧文華東方酒店

「行公司買嘢，只着吊帶小背心一定頂唔住，必定會帶備外套。」
黎小姐 太古廣場乘客

本港室內空調溫度之低，世界知名，多份國際權威旅遊刊物如《Lonely Planet》及《國家地理旅遊雜誌》(National Geographic Traveler)，都提醒旅客夏天來港旅遊，進出室內場所都應帶備一件薄衣，以免着涼。

交通工具投訴最多

地球之友自本月五日，發起「城市雪房」舉報行動，呼籲市民舉報室溫低於二十五點五度的室內場所，至本月二十二日共收到逾二百宗舉報，涉及二百六十六個地點，當中交通工具接獲的投訴最多，共六十四宗，其中九廣東鐵車廂被指只有十六至十八度，城巴車廂只得十九度。

投訴商場的有五十三宗，食肆也有三十一宗，其中包括多個旅客熱點，如中環繡記酒家、尖沙嘴北京樓、中環國金商場、觀塘 APM 商場等。而投訴政府機構的則有十九宗，包括旅遊發展局、香港及沙田中央圖書館及中環郵政總局等。

最凍洗手間僅16度

至於在城市雪房名單中高居榜首的，是位於九龍灣德福商場的稻香超級漁港的男洗手間，溫度竟低至十六度，較政府推動的二十五點五度，足足低了九點五度。

地球之友環境事務經理朱漢強昨日在記者會上稱，香港空調過凍已惹來多份國際旅遊刊物批評，令香港由動感之都變成凍感之都。「我哋唔係話反對開冷氣，但大家根本唔需要凍到得十六度嘅廁所。」他尤其不滿旅發局特別在網頁上提醒遊客，在進入餐廳或室內場所宜帶備薄外套，但旅發局尖沙嘴旅客諮詢及服務中心，室溫卻只有十九度。

本報記者昨日曾到多個列為城市雪房的地点，包括文華東方酒店、太古廣場連卡佛百貨等，進入室內不一會兒，即感到陣陣寒意；至於被列為最凍雪房的九龍灣稻香超級漁港男洗手間，廁格明顯「涼浸浸」；位於尖沙嘴的旅發局旅客中心，職員都要穿上外套保暖。

防滑倒男廁要低溫

旅發局否認旅客中心溫度太低，並指出曾在該中心五個不同位置量度室溫，結果顯示平均溫度為二十四點五度。九龍灣稻香超級漁港解釋，洗手間要保持較低室溫，以免地面濕滑令客人滑倒。九鐵指會跟進投訴，並稱車廂溫度預設為二十四度，冷氣系統設有溫度感應器，當出現溫差會自動調節。

地球之友表明，會繼續追擊冥頑不靈的機構，若有關場所不將室溫調升，會在下月把雪房名單經互聯網發布，並附上聯絡方法，讓市民直接致電投訴。

冷氣最凍五大地點

| 被投訴地點 | 量度日期 | 溫度 |
|-------------------------|-------|-----------------|
| 長江中心 Café de Central | 8月1日 | 18°C - 20°C |
| 荃灣廣場夏麵館 | 6月10日 | 19°C - 20.5°C |
| 海洋公園零售店舖 | 8月4日 | 19.3°C - 20.9°C |
| 荃灣吉野家 | 7月26日 | 19.4°C |
| 港鐵西鐵線車廂 | 6月8日 | 19.8°C |

資料來源：環保觸覺



Thermal Comfort Control - Challenges

- ❖ No thermal comfort sensor - subjective
- ❖ People do not know their preferred temperature
- ❖ Changing thermal preferences
- ❖ Diverging preferences to a group of people



How to tackle the challenge?

Thermal Comfort

“ The condition of mind that expresses satisfaction with the thermal environment ”

American Society of Heating, Refrigerating, and Air-Conditioning Engineers (ASHRAE)

Factors:

- i. metabolic rate
- ii. clothing insulation
- iii. air temperature
- iv. radiant temperature
- v. air speed
- vi. humidity

How can the facility operator know?

Thermal Comfort



1 User submits their votes



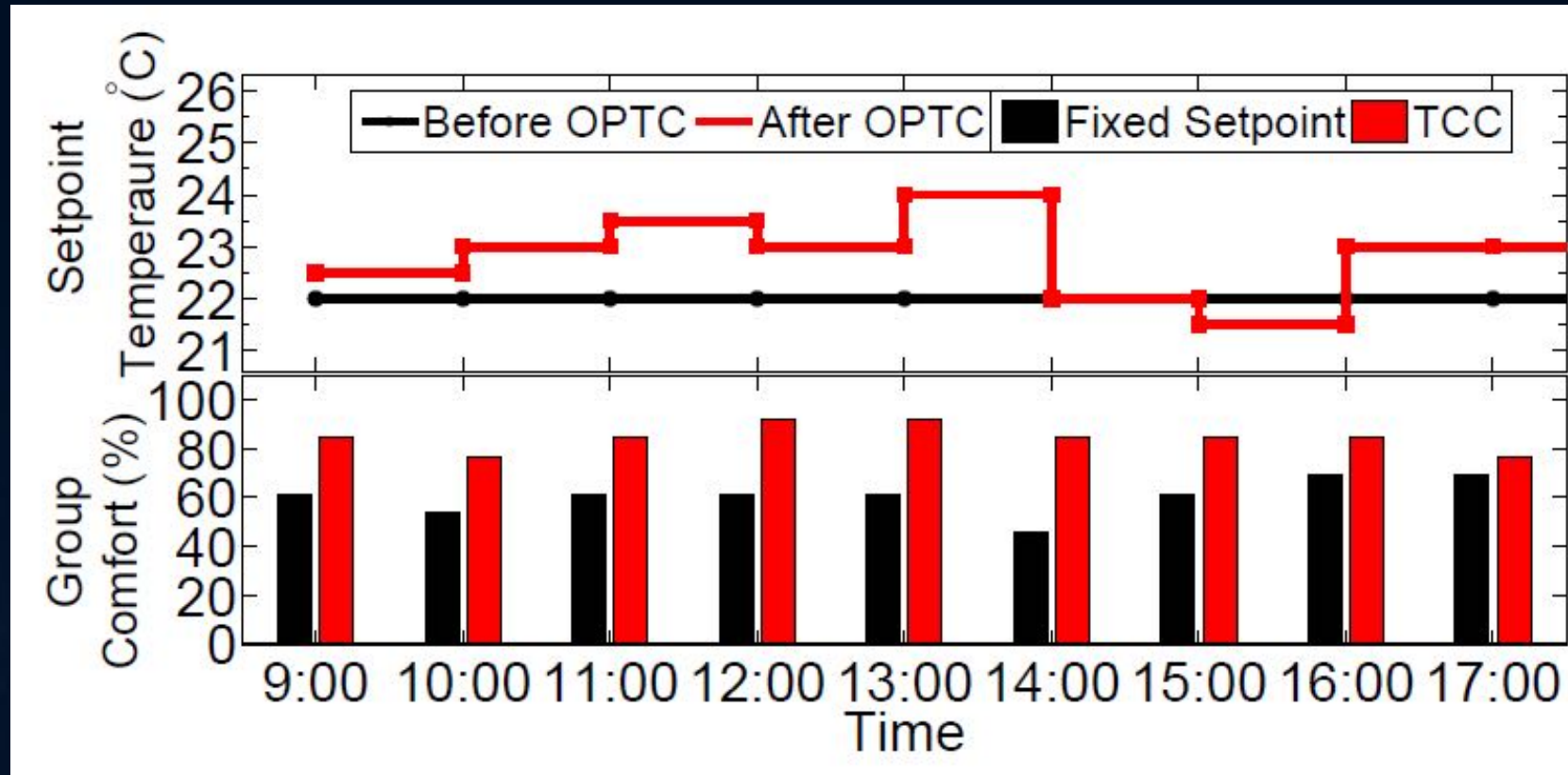
2 Optimized Setpoint adjustment



3 Machine learning to optimize the system and group thermal comfort

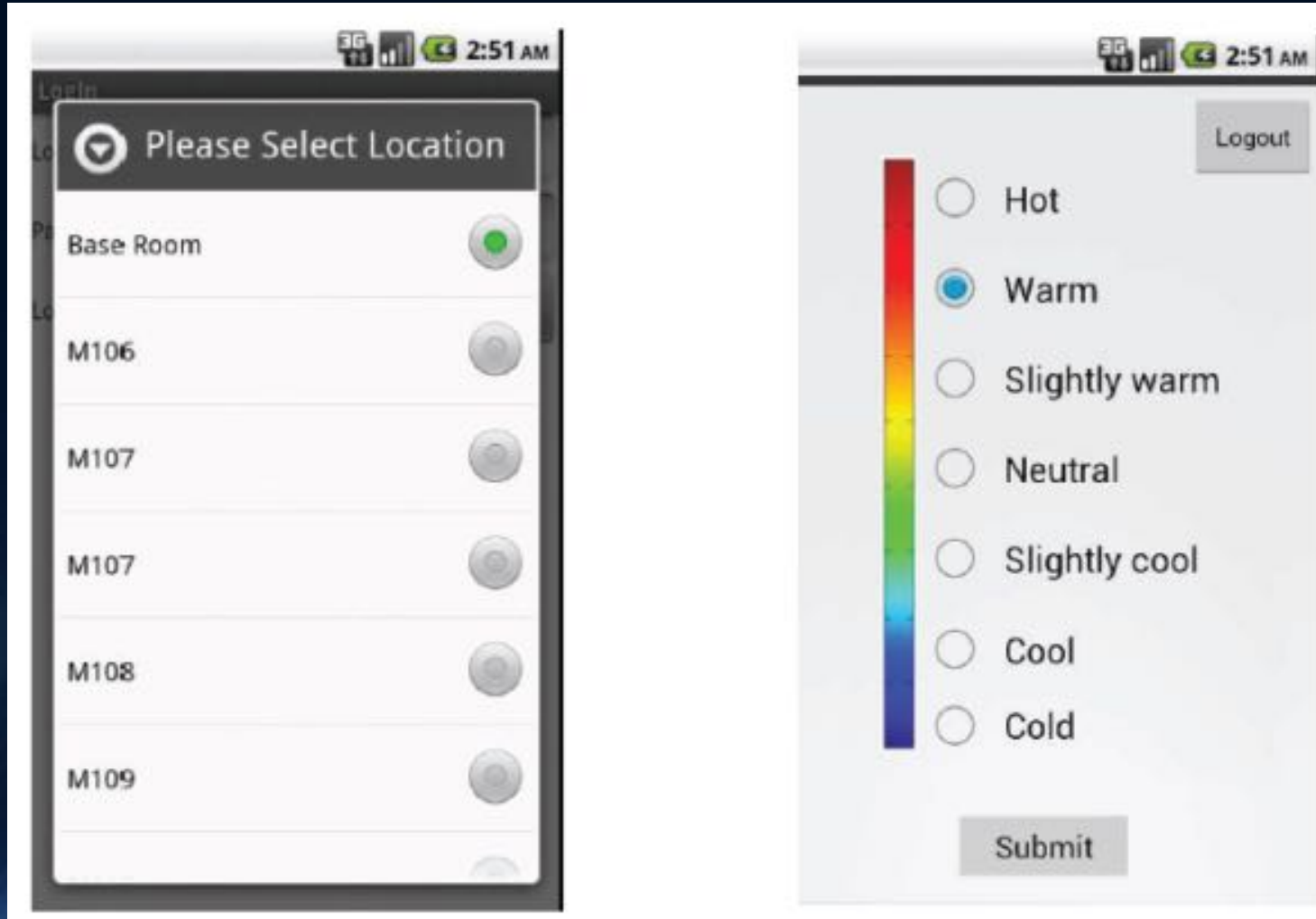
Source: Comfyapp.com

Group comfort improvement



Overall improvement: 33.8%

Smart Office Control App



Smart City Perspective

- ❖ Smart Mobility
- ❖ Smart Economy
- ❖ Smart Government
- ❖ **Smart Living**
- ❖ **Smart Environment**
- ❖ **Smart People**



Thank You!



E-mail: abraham.lam@mega-automation.com

FB: MEGA Automation