



President Forum Series – Session No. 2

**Climate Resilience for Infrastructure Development
- How far should we go?**

Why President Forum?

.....promote knowledge exchange amongst members physically in a relaxed environment, online to interested members and archive to our electronic library for future reference.



President Forum Series Climate resilience for infrastructure development: How far should we go?

11 October 2023, Wednesday

6:30pm - 8:00pm (reception starts at 6:00pm)

EngHub, Kwun Tong

Hybrid
(physical - 35 and online - unlimited)

Cantonese

Speakers

Ir Dr Barry LEE
President of HKIE

Ir YUEN Ka-wai, Esther
Acting Assistant Director, O&M Branch, Land Drainage Division
Drainage Services Department, the HKSAR Government

Ir YEUNG Fei, Jenny
Deputy Head of GEO (Planning & Standards)
Civil Engineering and Development Department, the HKSAR Government

Ir Dr Bruce CHONG
Director (Urban Sustainability, Climate Resilience & Smart City), ARUP

Facilitator Ir Tim WONG
Past Chairman, President's Protégés Club, the HKIE

Registration QR Code



Hong Kong's Climate in the 21st Century

HONG KONG'S CLIMATE IN THE 21ST CENTURY



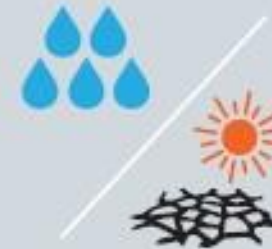
More very hot days
and hot nights



Fewer rain days but
average rainfall intensity
will increase



More extreme
rainfall events



More extremely wet years
but risk of extremely
dry years will remain

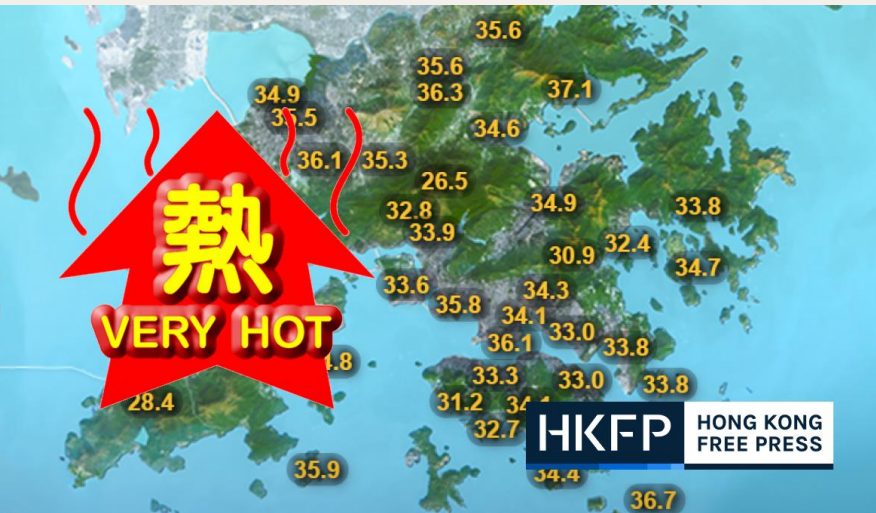


Global sea level rise will lead to
coastal changes all over the world,
including Hong Kong



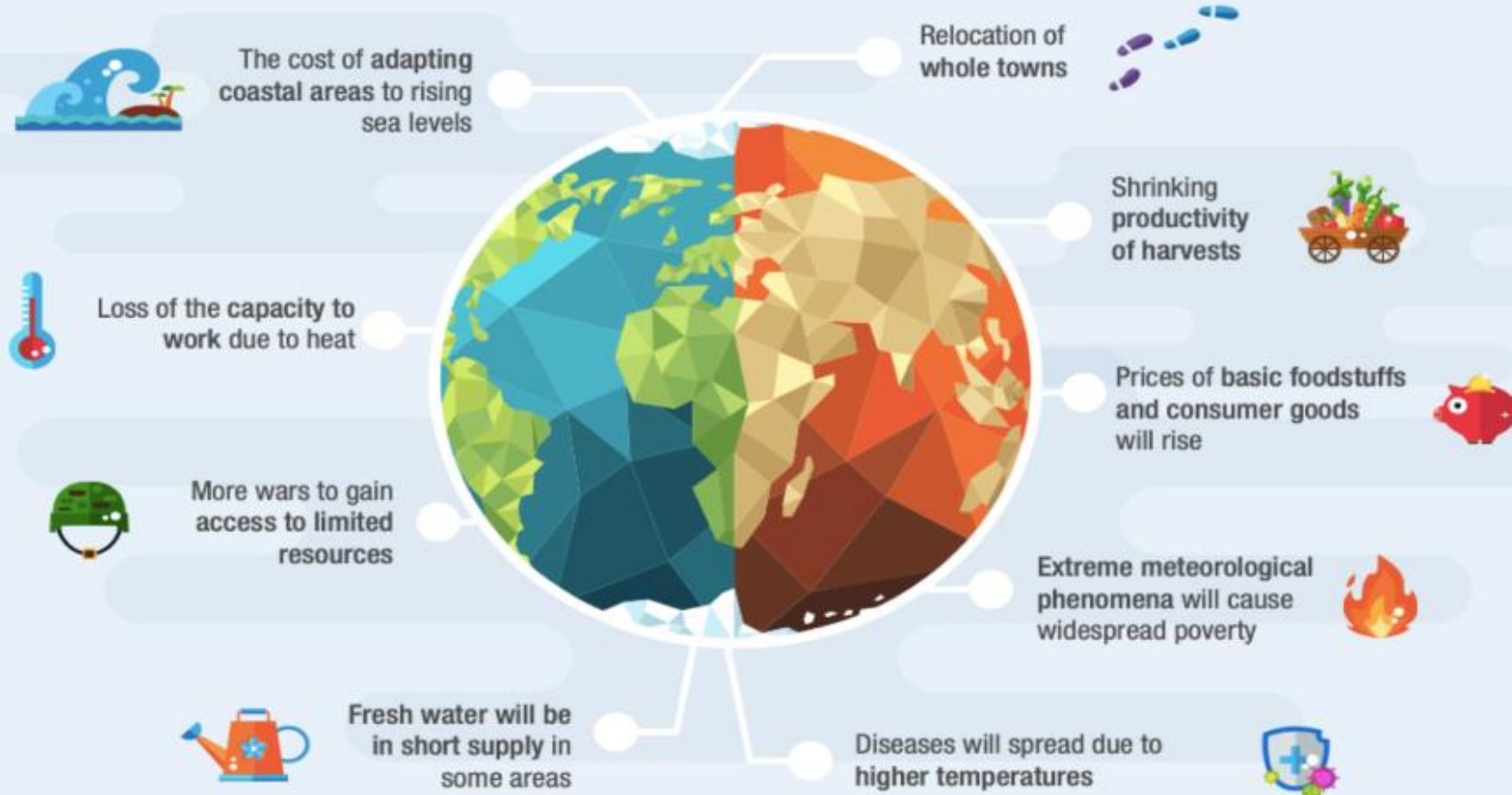
Threat of storm surges associated
with tropical cyclones will rise

Risks to Climate Change

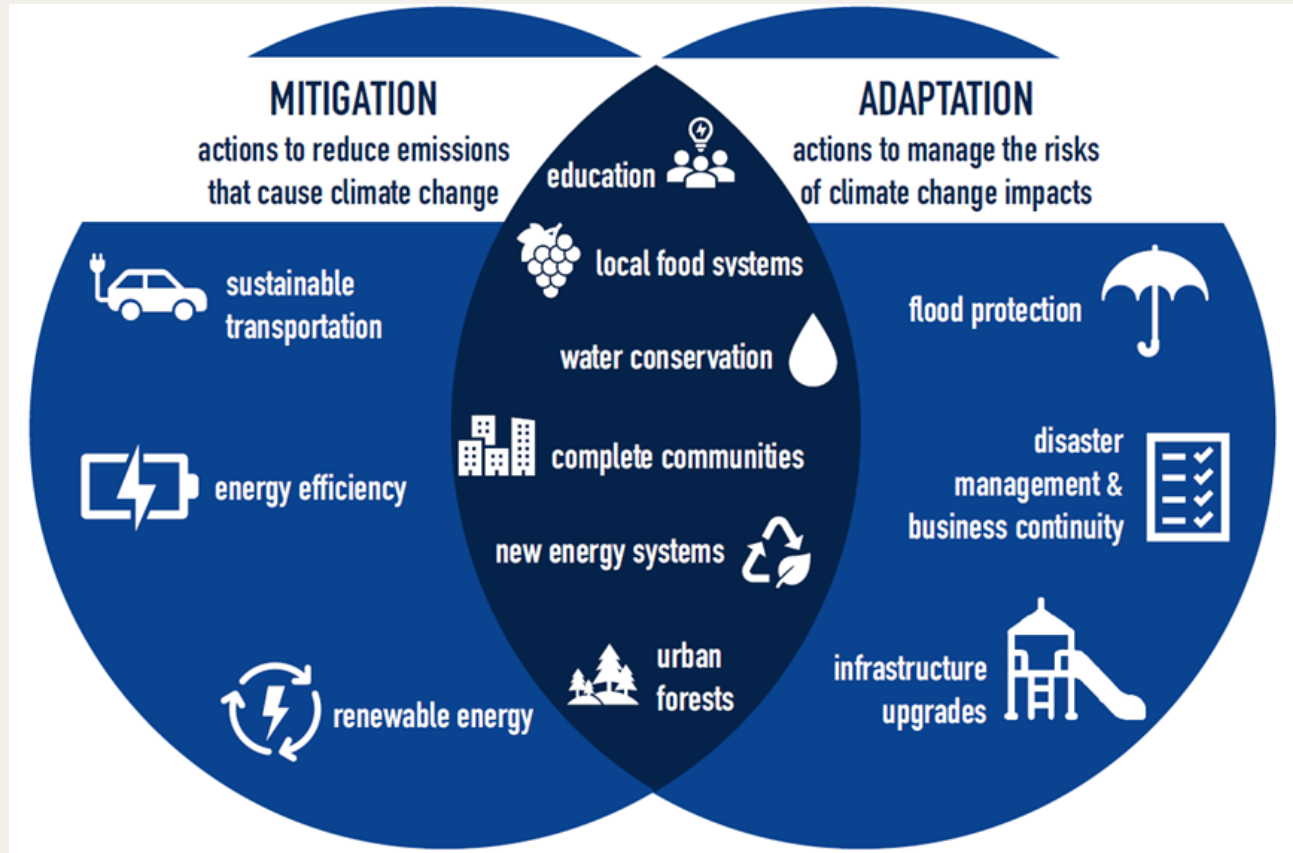


Social and Economic Impact of Climate Change

SOCIAL AND ECONOMIC IMPACT OF CLIMATE CHANGE



Measures to Climate Change



Since 2017, Inter-departmental Working Group on Climate Change set up by the Environment Bureau for formulating policies and measures in adapting climate change to reduce greenhouse gas emissions and combat climate change.

Climate Resilience Infrastructure - How far should we go?

.....a complex and multifaceted question to the society !

- Severity of predicted impacts
- Cost-effectiveness
- Adaptive capacity
- Equity and justice on investment in different community
- Co-benefits
- Long term sustainability

‘Hard’ measures – infrastructure upgrade, warning system, etc.

‘Soft’ measures – risk assessment, contingency planning,
and public education