

THE HKIE

YEARBOOK 2025


ISSN 2791-013X

Advertisers' Edition



CEC 中國港灣
CHINA HARBOUR

H 香港振華
HONG KONG ZHEN HUA

 www.check.com

建造香港

Building Hong Kong's Future

1200+
全職員工

40
經營年資

335
個項目

100+
個獎項



The HKIE Yearbook 2025



In compliance with the Personal Data (Privacy) Ordinance, the list of Members together with its information have been withheld from the advertisers' edition of the *HKIE Yearbook*.

Advertisements that appear in this Yearbook imply neither endorsement nor recommendation by The Hong Kong Institution of Engineers.

A Publication of **The Hong Kong Institution of Engineers**

9/F Island Beverley, No 1 Great George Street
Causeway Bay, Hong Kong

Tel: (852) 2895 4446

Fax: (852) 2577 7791

Email: hkie-sec@hkie.org.hk



ISSN 2791-013x



© 2025 The Hong Kong Institution of Engineers.
All Rights Reserved.

Vision

Sustained Excellence in the Engineering Profession

持續發揮優質工程專業

Mission

To promote the advancement of engineering and to facilitate the exchange of knowledge and ideas.

帶領工程界邁步向前，促進知識與理念的交流。

To provide a broad range of services to members, to assist them in developing their careers and to play their full role in contributing to society.

為會員提供多元化的服務，幫助他們發展事業，服務社會。

To maintain a high standard of the profession, and to raise the standing and visibility of engineers.

維持工程界的專業水平，並提高工程師的地位及聲望。

Core Values

Sustainability 持續發展

Professionalism 專業精神

Integrity 廉潔正直

Excellence 精益求精

Continuous improvement 力臻完善

Objects of the Institution

The objects of the Institution are, subject to this Ordinance:

- (a) to promote the general advancement of the science and practice of engineering in all its disciplines and branches;
- (b) to maintain the integrity and status of the engineering profession and to represent it both to the public and to the Government;
- (c) to establish and operate technical groups, specialist sections, divisions or colleges within the Institution;
- (d) to encourage and foster a spirit of friendly collaboration amongst its members and with members of similar institutions or other professional bodies;
- (e) to hold meetings of the Institution for receiving communications for discussion on subjects bearing upon engineering or upon subjects relating thereto;
- (f) to facilitate the exchange of information and ideas in relation to various disciplines and branches of engineering and to publish and communicate to members information on all matters in connection with the profession of engineering;
- (g) to promote the acquisition of that species of knowledge which constitutes the profession of engineer including modern management methods;
- (h) to establish scholarships and grant prizes;
- (i) to discourage dishonourable conduct and practices arising in the engineering profession;
- (j) to do all such other things as are incidental or conducive to the attainment of the above objects as the Council may consider appropriate.

Powers of the Institution

Subject to this Ordinance the Council may, on behalf of the Institution, do all such things as are necessary for, or incidental or conducive to the better carrying out of the objects of the Institution, and, in particular, but without prejudice to the generality of the foregoing, may:

- (a) acquire, take on, lease, purchase, hold and enjoy any property and sell, let or otherwise dispose of the same;
- (b) enter into any contract;
- (c) provide appropriate amenities for members;
- (d) employ staff;
- (e) provide residential accommodation for staff and visiting guests;
- (f) provide or contribute to pensions for staff;
- (g) act as trustee in relation to pension schemes and funds for scholarships and prizes;
- (h) borrow money in such manner and on such securities or terms as the Council deems appropriate or expedient;
- (i) apply for any grant in aid for the functions of the Institution on such conditions as the Council deems appropriate or expedient;
- (j) invest the funds of the Institution in such manner and to such extent as the Council thinks appropriate or expedient.

Driving Technical Excellence, Delivering Sustainable Infrastructure

We bring together diverse perspectives and trusted expertise — in all areas of infrastructure — to solve complex challenges for clients around the world. Guided by our Sustainable Legacies strategy and culture of digital innovation, we create opportunities that make infrastructure more sustainable, accessible and resilient. Safeguarding what's most important: people and our planet.

Contents



Foreword	7
Presidents	8
The Council	10
Division Chairmen, Discipline Representatives and Overseas Chapter Chairmen	11
Engineering Companies Index	18
Engineering Companies Listings	20
Engineering Services and Products Suppliers Index	49
Engineering Services and Products Suppliers Listings	50
Products and Services Index	58

Together, we build a highly connected world.



Largest

FOOTPRINT

8 Data
Centres

Most

CONNECTED

Asia's
No. 1
Connectivity

Highest

CAPACITY

280+
MV Power



+852 2208 8338



enquiry@sunevision.com



www.sunevision.com

Connect with us



Foreword



Published annually for over three decades now, the *HKIE Yearbook* has stood as one of the HKIE's signature publications, a bracing constant in an institution defined by evolving practices. Nevertheless, it has not been immune to change. Three years ago, we dispensed with this publication's printed format in favour of an exclusively digital presentation; and have not retraced our steps since then. That was one episode in our commitment to contribute, as a responsible institution, to sustainability. As modest as that contribution might seem, we were pleased to have taken the meaningful step.

Change is a concept that the HKIE has embraced wholeheartedly, and digitalisation—a change towards more contemporary modes of communications—is merely one of the many ways whereby we put that concept into practice. As professionals, change abounds in our lives and governs our careers' direction: Emerging technologies formerly on the industry's margins, like Digital Twin, are now widely explored, adopted, and celebrated as possible solutions to the challenges now confronting the industry; the concerning implications of environmental degradation, which we vaguely grasped until recent decades, have awakened in us an acute sustainability awareness—one that, I rejoice to report, is now actively and conscientiously at work in our everyday practices.

If there is one single conclusion that a perusal of the *HKIE Yearbook 2025* can lead one unintentionally to draw, it is that any such positive changes had to come about through the long-term collective endeavours of our professional community. After all, it is apparent that all the stakeholders catalogued in this directory—from engineering consultants and contractors, to individual members of our Institution—have contributed to the city's most highly regarded developments, both individually and as a unified force.

Scrolling through the Yearbook's substantial pages, I was elated in equal measures by the familiar names as well as by those unknown to me until now: While the former demonstrate our profession's continuity and succession in the course of time, the latter indicate how much new blood is being injected into our midst—how much resilience, in other words, our sector has shown in the face of adversity.

These reflections notwithstanding, the *HKIE Yearbook 2025* remains above all a reference work, a practical guide to the local engineering trade. I am confident that it will reward all those who consult it for the purpose of giving themselves a firm grounding in our profession's current landscape. As a self-styled Nexus of the engineering profession, the Institution is committed to providing what hands-on resources it could for members to form connections with other engineering stakeholders. The following pages present such resources in their condensed and updated form.

I render my humble thanks to our members, our advertisers, and the Secretariat for making this publication possible and such a continued success over the years. If there are any members at all who find this Yearbook useful while navigating their way through the engineering world, it will have served its purpose more than adequately.



Ir Eric S C MA
President

GBS JP BSc(Eng) MSc(Eng) CEng FHKIE FHKEng FStructE FICE
R.P.E.(CVL, STL) 土木建築正高級工程師 (內地人社)
president@hkie.org.hk

Presidents of The Engineering Society of Hong Kong

(established in 1947)

1947/48	Ir J FINNIE
1948/49	Ir S E FABER
1949/50	Ir W L E MILLER
1950/51	Ir A W BLACK
1951/52	Ir F C CLEMO
1952/53	Ir P V REVELERY
1953/54	Ir J C L WONG
1954/55	Ir T L BOWRING
1955/56	Ir R V LEDERHOFFER
1956/57	Ir A STORRAR
1957/58	Ir D S HILL
1958/59	Ir Prof S Y KING
1959/60	Ir E M JOFFE
1960/61	The Hon Sir S Y CHUNG
1961/62	Ir J C FABER
1962/63	Ir W S Y YEH
1963/64	Ir M A D'Almada REMEDIOS
1964/65	Ir Prof S MACKEY
1965/66	Ir Dr E H C TAO
1966/67	Ir J J ROBSON
1967/68	Ir S Z SUNG
1968/69	Ir M C R TALAMO
1969/70	Ir W MILLER
1970/71	Ir S G ELLIOTT
1971/72	Ir Dr Y K CHING
1972/73	Ir S L CHEN
1973/74	Ir A T ARMSTRONG-WRIGHT
1974/75	Ir G B O'RORKE

Presidents of The Hong Kong Institution of Engineers

(established by Ordinance in December 1975)

1975/76	Ir D M ALLINGHAM	2003/04	Ir Dr A S K CHAN
1976/77	Ir Prof S Y KING	2004/05	Ir J Y C KWAN
1977/78	Ir P S MOLYNEUX	2005/06	Ir Dr G C Y WONG
1978/79	Ir Dr H K CHENG	2006/07	Ir K L WONG
1979/80	Ir Dr R K EDGLEY	2007/08	Ir Dr The Hon W K LO
1980/81	Ir A J VAIL	2008/09	Ir P Y WONG
1981/82	Ir L T TAO	2009/10	Ir Dr A K C CHAN
1982/83	Ir D A MORRIS	2010/11	Ir Prof R P K CHU
1983/84	Ir L R THOMPSON	2011/12	Ir Dr F C CHAN
1984/85	Ir G J OSBORNE	2012/13	Ir Prof K K CHOY
1985/86	Ir Dr W S Y CHAN	2013/14	Ir R K S CHAN
1986/87	Ir Dr E H C TAO	2014/15	Ir V C K CHEUNG
1987/88	Ir Dr R C T HO	2015/16	Ir C C CHAN
1988/89	Ir N A KRAUNSOE	2016/17	Dr J K H CHOI
1989/90	Ir Dr S P W WONG	2017/18	Ir Prof T K C CHAN
1990/91	Ir J CHIU	2018/19	Ir Prof P N K WONG (up to 8/2018)
1991/92	Ir R J BLAKE	2018/19	Ir R S M YU (from 9/2018)
1992/93	Ir Dr R M KENNARD	2019/20	Ir R S M YU
1993/94	Ir Prof T P LEUNG	2020/21	Ir Prof P L YUEN
1994/95	Ir M J MATTHEWS	2021/22	Ir E K F CHUNG
1995/96	Ir E K H LEUNG	2022/23	Ir A K M BOK
1996/97	Ir B J STUBBINGS	2023/24	Ir Dr B C H LEE
1997/98	Ir F S Y BONG	2024/25	Ir E S C MA
1998/99	Ir Dr O L T POON		
1999/00	Ir Prof C C CHAN		
2000/01	Ir Dr J W K LUK		
2001/02	Ir Dr J M K CHOW		
2002/03	Ir Prof C K LAU		

The Council

[Session 2024/2025]



PATRON

THE CHIEF EXECUTIVE

THE HONOURABLE

JOHN KC LEE, GBM, SBS, PDSM, PMSM

PRESIDENT

* Ir Eric S C MA

IMMEDIATE PAST PRESIDENT

* Ir Dr Barry C H LEE

SENIOR VICE PRESIDENT

* Ir Alice K T CHOW

VICE PRESIDENTS

* Ir Prof Frank F CHAN

* Ir Rupert K Y LEUNG

ELECTED ORDINARY MEMBERS

Ir Dorothy Y Y CHAN

Ir Prof Christopher Y H CHAO

Ir CHENG Chi Lung

Ir Dr Johnny C Y CHEUK

Ir Kenneth K W CHEUNG

Ir Benedict L S CHEUNG

Ir CHIANG Tung Keung

* Ir Edmond W M FONG

Ir Prof Ken HO

Ir KWOK Wai Shun

Ir Alexis C C LEE

Ir Horace C H LEE

Ir Johnson K C LEE

Ir Prof Eddie H K LOCK

* Ir William W L LUK

Ir Charles H T SO

Ir Kelvin S K TANG

Ir Gloria Y Y TANG

Ir TSE Lok Him

Ir Tony W G ZA

COUNCIL MEMBERS (DIVISION)

Ir Charles H L CHAN

Ir Norman S W CHAN

Ir Donny W K CHAN

Ir Prof Kannie W Y CHAN

Ir Brian W L CHENG

Ir CHENG Yeung Ming

* Ir Tony Y K HO

Ir LEUNG Chi Lap

Ir Prof Irene M C LO

Ir Dr MAK Shu Lun

Ir Alcohol K H MOK

Ir Dr NG Chak Man

Ir Simon P H NG

Ir Albert A Ray TAM

Ir Dr TSANG Kim Fung

Ir Dr Fiona S C TSUI

Ir Dr WONG Yiu Man

Ir Dr Herbert W ZHENG

EX-OFFICIO MEMBERS

Mr Otto W H MAK

Ms Keiko W S KAM

CO-OPTED MEMBERS

Ir Danny C S HUNG

Ir Prof Alexander P K WAI

OBSERVERS

Ir Dr The Hon LO Wai Kwok

Ir Prof P L YUEN

CHIEF EXECUTIVE AND SECRETARY

* Ir Prof Alfred SIT

* Members of the Executive

Division Chairmen & Discipline Representatives

(Session 2024/2025)

DIVISION CHAIRMEN

Aircraft

Ir CHAN Wai Kwong

Biomedical

Ir TSE Lok Him

Building

Ir LAI Kwok Hung

Building Services

Ir Jimmy K LI

Civil

Ir LI Chun Fai

Control, Automation & Instrumentation

Ir Prof Louis F S LOCK

Electrical

Ir Banson K C LAM

Electronics

Ir Dr SHUM Yu Hing

Environmental

Ir Dr Raymond K L CHAN

Fire

Ir Prof CHAN Siu Lai

Gas & Energy

Ir Jason K T FAN

Geotechnical

Ir Dr LEE Siow Wei

Information Technology

Ir Dr Vincent T Y NG

Logistics & Transportation

Ir Carmen CHU

Manufacturing, Industrial & Systems

Ir Raymond M Y SHAN

Materials

Ir Prof Jonathan C Y CHUNG

Mechanical, Marine, Naval Architecture &

Chemical

Ir WONG Chi Keung

Nuclear

Ir Prof Vincent Simon HO

Structural

Ir CHIN Sai Ping

DISCIPLINE REPRESENTATIVES

Aircraft

Ir NG Lai Ho

Biomedical

Ir Prof TONG Kai Yu

Building

Ir Prof Michael C H YAM

Building Services

Ir Kenneth S K LI

Chemical

Ir Prof CHEN Guohua

Civil

Ir David T W LAU

Control, Automation & Instrumentation

Ir Alain S W TANG

Electrical

Ir Tony K T YEUNG

Electronics

Ir CHAN Ho Wing

Energy

Ir Paul P F KWONG

Environmental

Ir Kenny S W WONG

Fire

Ir LAU Chi Kin

Gas

Ir Vincent H K CHOW

Geotechnical

Ir Dr LAU Chi Keung

Information

Ir Prof LEUNG Ho Fung

Logistics & Transportation

Ir Charles H T SO

Manufacturing, Industrial & Systems

Ir Herman W C CHIU

Marine & Naval Architecture

Ir Louis K S SZETO

Materials

Ir Dr LO Yiu

Mechanical

Ir LEE Chee Kwan

Nuclear

Ir Prof Ken C N CHEUNG

Structural

Ir TSE Wai Keung

AP/RSE/RGE Committee

Ir Terence L Y YAU

Associate Members Committee

Mr Otto W H MAK

Safety Specialist Committee

Ir TSE Wing Fung

Young Members Committee

Ms Keiko W S KAM

Overseas Chapter Chairmen

AUSTRALIAN CHAPTER

Ir YEUNG Mai Mai

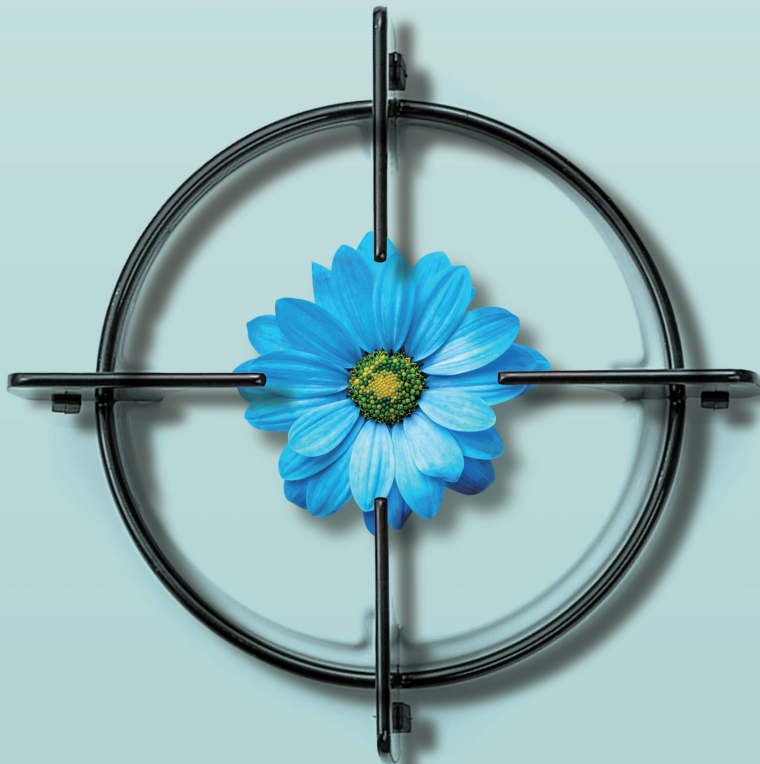
CANADIAN CHAPTER

Ir Brian LEE

UK CHAPTER

Ir Harry H W LEE

Sustainability: Key to Blossoming Future



As an energy company with the longest history in Hong Kong, our pioneering spirit has always been underpinned by emphasising the public good. We have not only taken the initiative to conserve energy and reduce emissions through utilising clean energy, such as hydrogen energy, photovoltaic and other renewables, but also upheld our commitment to corporate social responsibility, as evident in our efforts in doing our best to help the underprivileged in society.

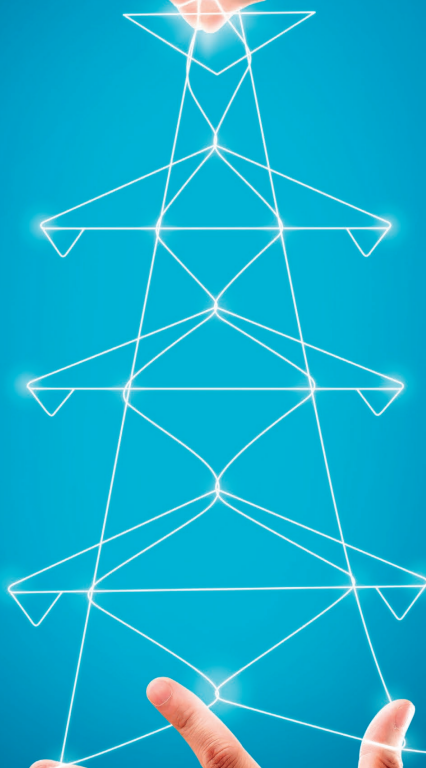
Throughout our growth, we have been making the achievement of an excellent environment, social and governance (ESG) performance a top priority across our operation, in order to ensure great business resilience to overcome various challenges. We shall continue to invest in projects contributing towards decarbonisation as we join the rest of the world in tackling climate change, while adding value to safeguard the interests of our stakeholders for positive impact.



Towngas

智慧燃展未來
Smart Energy for a Brighter Future

Delivering Reliability



CLP 中電

Power Brighter Tomorrows



THE HONG KONG
POLYTECHNIC UNIVERSITY
香港理工大學



Faculty of Construction and Environment
建設及環境學院

Faculty of Construction and Environment

建設及環境學院

Master of Science (MSc) Programmes 理學碩士

**Building Services
Engineering**
屋宇設備工程學
(Programme Code: 33084)

**Carbon Neutral Cities
and Urban Sustainability**
碳中和城市及可持續性
(Programme Code: 33088)

Civil Engineering
土木工程學
(Programme Code: 31077)

**Construction
and Real Estate**
建築及房地產學
(Programme Code: 32111)

**Environmental Management
and Engineering**
環境管理及工程學
(Programme Code: 31078)

Facility Management
設施管理
(Programme Code: 33085)

**Fire and Safety
Engineering**
消防及安全工程學
(Programme Code: 33086)

Geomatics
測繪及地理資訊學
(Programme Code: 34084)

High Performance Buildings
高效能建築
(Programme Code: 33087)

Intelligent Construction
智能建造
(Programme Code: 32114)

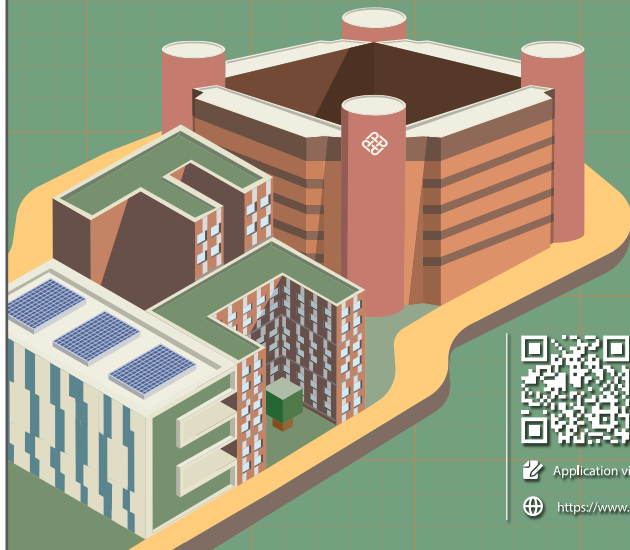
Project Management
項目管理
(Programme Code: 32113)

**Urban Informatics
and Smart Cities**
城市信息學及智慧城市
(Programme Code: 34083)

Others 其他

**Master of Engineering in
Building Services Engineering**
屋宇設備工程學
(Programme Code: 33082)

**Doctor of International
Real Estate and Construction**
國際房地產及建築博士
(Programme Code: 32109)



Enquiries

(852) 3400-8496 (852) 2362-2574

faculty.ce@polyu.edu.hk

Application via Study@PolyU website at www.polyu.edu.hk/study

<https://www.polyu.edu.hk/fce/study/taught-postgraduate-programmes/>

Programmes Subsidised by Vplus Engineering*

60%
Tuition Subsidy

- ⚙️ Professional Diploma in Environmental Technology and Management (EG424107P)
- ⚙️ Professional Diploma in Innovative Industrial Engineering (EG424733P)
- ⚙️ Professional Diploma in Railway Engineering (EG524401P)
- ⚙️ Professional Diploma in Smart City (EG424412P)
- ⚙️ Certificate for Building Information Modelling Manager (EG424129Q)
- ⚙️ Certificate for Safety Supervisors (EG423705Q)
- ⚙️ Certificate in Building Demolition (EG424118Q)
- ⚙️ Certificate in Robotic Welding [EG423734Q]

* Vplus Engineering is part of the Vplus Subsidy Scheme. Eligible applicants can reimburse 60% of the tuition paid up to a maximum of HK\$45,000 per person.

Engineering Discipline In-service Training Enquiries

- ☎️ 9081 5283
- ✉️ EDIT@vtc.edu.hk
- 📘 IVEEDIT
- 🌐 EDIT.vtc.edu.hk



Programme Website

Member of **VTC** Group

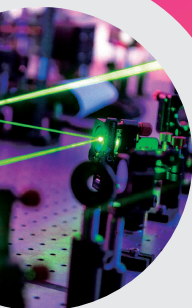


College of Engineering

香港城市大學
City University of Hong Kong

追求卓越
職場顯優勢

力求創新
成就好前途

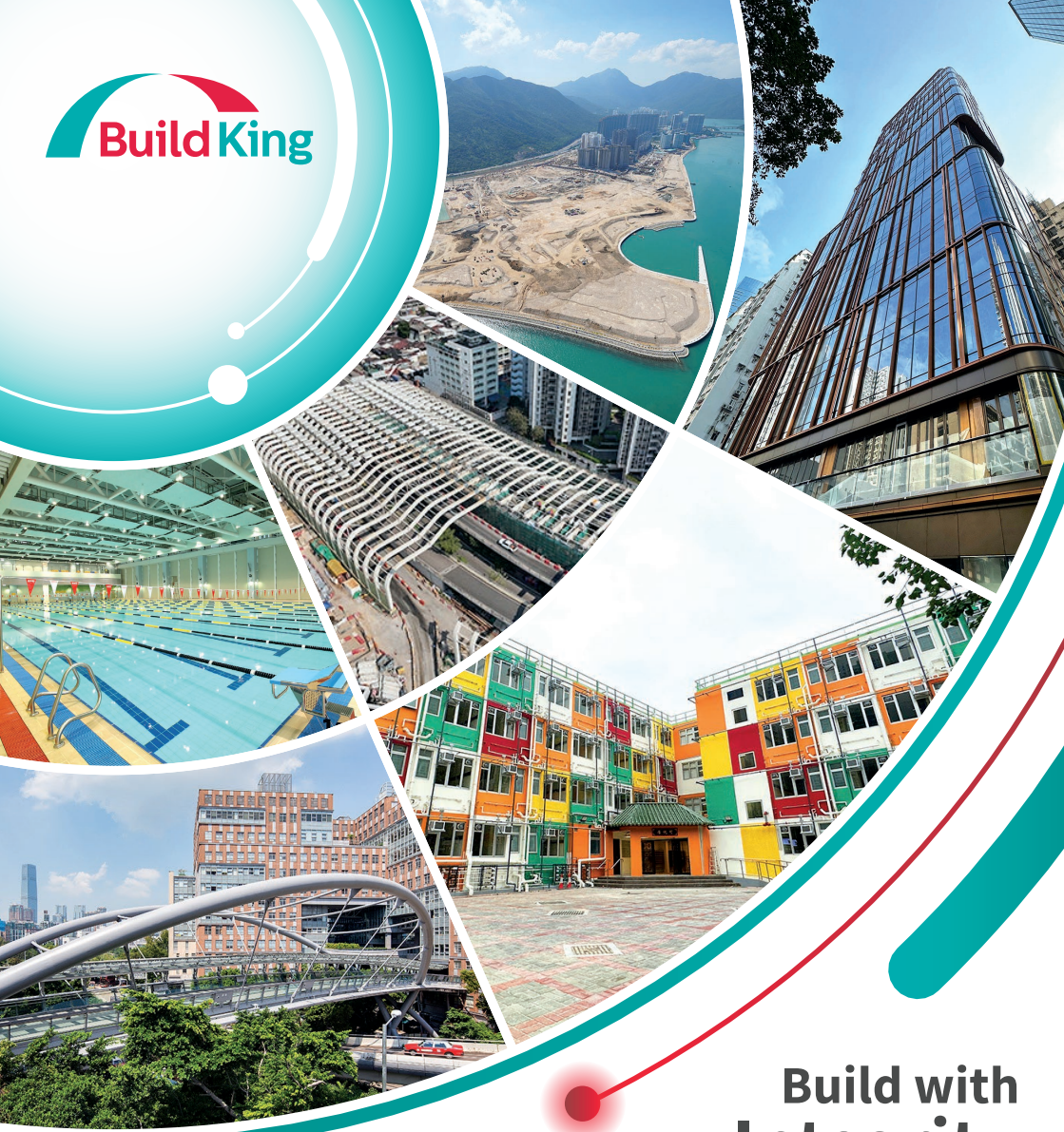


香港城市大學
工學院

CityUHK
Engineering

(852) 3442-4133
✉ ceng.adm@cityu.edu.hk
🌐 www.cityu.edu.hk/ceng





**Build with
Integrity
Innovation
Professionalism**

Build King Holdings Limited
利基控股有限公司

6/F., Tower B, Manulife Financial Centre, 223 Wai Yip Street, Kwun Tong, Kowloon, Hong Kong
香港九龍觀塘偉業街223號宏利金融中心B座六樓

T +852 2272 3680 F +852 2375 3655 E info@buildking.hk

www.buildking.hk

Engineering Companies

AECOM Asia Company Limited	20
Allied Sustainability and Environmental Consultants Group Limited	20
Anlev Elevator Group	21
Asia Infrastructure Solutions Limited	21
Associated Engineers, Limited	22
ATAL Engineering Group	22
AtkinsRéalis Asia Limited	23
Aurecon Hong Kong Limited	23
Bachy Soletanche Group Limited	24
Binnies Hong Kong Limited	24
Build King Holdings Limited	25
Carewin Engineering Ltd	25
Chun Lee Engineering Co Ltd	26
Chun Wo Construction Holdings Company Limited	26
Dragages Hong Kong Limited / Bouygues Travaux Publics	27
Far East Consulting Engineers Limited	27
Ferrier Chan & Partners Limited	28
Fugro (Hong Kong) Limited	28
Fugro Geotechnical Services Limited	29
Gammon Construction Limited	29
Great Top Engineering Limited	30
Hager Electro Limited	30
Halcrow China Limited	31
iAdvantage Limited	31
ISPL Consulting Limited	32
J. Roger Preston Limited	32
Jacobs China Limited	33
Majestic Engineering Co. Ltd.	33
Mannings (Asia) Consultants Limited	34
Meinhardt Consulting Engineers	34
Mott MacDonald Hong Kong Limited	35
Newland Engineering Limited	35
NV5 Limited	36
Ove Arup & Partners Hong Kong Limited	36

Shun Hing Engineering Contracting Co., Ltd.	37
Shun Hing Systems Integration Company Limited	37
Siemens Limited.....	38
SJ Group.....	38
Skyforce Engineering Limited.....	39
SOCAM Development Limited	39
Talent Mechanical & Electrical Engineers Limited.....	40
The Hongkong Electric Company, Limited	40
The Jardine Engineering Corporation, Ltd.	41
Tony Gee and Partners (Asia) Limited.....	41
Tysan Foundation Limited	42
VSL Hong Kong Limited; Intrafor Hong Kong Limited	42
Wellhope Design Consulting Limited.....	43
Wings & Associates Consulting Engineers Limited	43
Wong & Ouyang (Building Services) Limited	44
WSP	44
Young's Engineering Co Ltd.....	45

COMPANY LISTING

AECOM Asia Company Limited
12/F, Tower 2, Grand Central Plaza,
138 Shatin Rural Committee Road,
Shatin, New Territories, Hong Kong

Tel : (852) 3922 9000
 Fax : (852) 3922 9797
 Email : businessinquiry.hk@aecom.com
 Website : www.aecom.com

AECOM



Delivering a better world

AECOM is the global infrastructure leader, committed to delivering a better world. As a trusted professional services firm powered by deep technical abilities, we solve our clients' complex challenges in water, environment, energy, transportation and buildings. Our teams partner with public- and private-sector clients to create innovative, sustainable and resilient solutions throughout the project lifecycle – from advisory, planning, design and engineering to program and construction management. AECOM is a Fortune 500 firm that had revenue of US\$16.1 billion in fiscal year 2024. Learn more at aecom.com.

Recognition around the world

- **Engineering News-Record**
 No.1 in Water, Transportation, Facilities Design, Environmental Engineering, Green Design, Clean Air Compliance, Chemical Remediation, Mass Transit and Rail, Airports, Highways, Dams and Reservoirs
- **Fortune Magazine**
 World's Most Admired Companies for 11 consecutive years
- **Ethisphere**
 World's Most Ethical Companies for 5 consecutive years
- **The Hong Kong Council of Social Service**
 15 Years Plus Caring Company recognition

Contact: Ian Chung (Regional Chief Executive, Asia), Charlton Wong (Chairman, Hong Kong), Johnny Cheuk (Executive Leader, Hong Kong), Stephen Lai (Director of Operations, Hong Kong)
 Fellow 22 Member 535 Graduate 431

COMPANY LISTING

Allied Sustainability and Environmental Consultants Group Limited
27/F, Overseas Trust Bank Building,
160 Gloucester Road,
Wan Chai, Hong Kong

Tel : (852) 2815 7028
 Fax : (852) 2815 5399
 Email : info@aechk.com
 Website : www.aecg.com



沛然環保



Established in 1994, Allied Environmental Consultants Limited is a Hong Kong SAR based pioneering sustainability and environmental consulting firm with a vision to positively transform the environment and communities and shape a sustainable future for the world. We provide one-stop green and wellness building and carbon neutrality solutions, covering five business areas including (1) Green and Wellness Building, (2) Acoustics, Audiovisual, Lighting and Theatre Planning, (3) Environmental Consultancy and Sustainable Design, (4) Green Finance, Sustainability Strategies and ESG and (5) Smart and Green Internet of Things (IoT).

Our holding company, Allied Sustainability and Environmental Consultants Group Limited (AEC Group 8320.HK), is the first listed sustainability and environmental consultancy service provider in Hong Kong SAR. With an extensive portfolio spanning Hong Kong SAR, the Mainland China, the Asia Pacific region and the Middle East, AEC Group has a broad and diverse client base covering government authority, property developers, architects, financial and academic institutions.

AEC has certified more than 13 million square meters of green buildings across Hong Kong SAR, the Mainland China and ASEAN countries over the past three decades.

Green Building Certification we manage:

- BEAM | BREEAM | LEED | WELL

The 1st service provider in Hong Kong:

- Carbon Disclosure Project (CDP) | Carbon Risk Real Estate Monitor (CRREM) Project

Our active role in the industry:

- HKGBC | HKIQEP | USGBC | BRE | GRESB

Our cloud-based ESG management platform:

- Sustainature

Contact: Grace Kwok (Chairman and Executive Director), Dennis Wu (Chief Executive Officer and Executive Director)
 Member 2

Anlev Elevator Group
ATAL Tower,
45-51 Kwok Shui Road, Kwai Chung,
New Territories, Hong Kong

ANLEV
 Anlev Elevator Group

Tel : (852) 2561 8278
 Fax : (852) 2565 7638
 Email : info.hk@anlev.com
 Website : www.anlev.com

Anlev Elevator Group ("Anlev") – ATAL Engineering Group's global brand of lifts, escalators, and moving walkways, specialises in the design and customisation, manufacturing, sales and installation, modernisation and maintenance of a wide range of lifts, escalators and moving walkways, serving millions of users and customers from over 20 countries on six continents.

With our own factory facilities based in Nanjing, China, Anlev offers a complete range of high-quality, safe and energy-efficient products, suitable for all market sectors. Our professional teams provide tailor-made solutions with energy-efficient and environmentally friendly products to meet client needs for passenger, freight and heavy-duty models in commercial, residential, industrial and infrastructure environments, all complied with international standards.

Since 2013, when the quarterly Contractors' Performance Rating of registered lift and escalator contractors was launched by the Electrical and Mechanical Services Department of the Hong Kong SAR Government, Anlev has been consistently receiving the highest 6-star rating in safety and total quality, representing our strengths in terms of commitment to safety and high quality.

Anlev has completed two acquisitions in 2023 – JCW Lifts Ltd and Precision Lift Services Limited – both successful lift businesses in the United Kingdom. With the acquisitions, Anlev provides comprehensive one-stop lift and escalator services for customers in the United Kingdom, as well as establishing our position in Europe and furthering our global expansion plan.

Contact: Otto Poon (Founder), Raymond Chan (Chief Executive Officer), Andy Cheung (Chief Executive, Lifts and Escalators (Greater China)), Samuel Cheng (Chief Executive, Lifts and Escalators (Overseas))
 Member 2

Asia Infrastructure Solutions Limited
23/F, Two Harbour Square,
180 Wai Yip Street, Kwun Tong,
Kowloon, Hong Kong

 **asia
infrastructure
solutions**
 a GIS Consulting Group company

Tel : (852) 3619 9400
 Fax : (852) 2805 5028
 Email : info-hk@asiainfrasolutions.com
 Website : www.asiainfrasolutions.com/

Asia Infrastructure Solutions (AIS) is a leader in delivering sustainable design, engineering, project & programme management, cost management, business advisory and consultancy solutions for the infrastructure, buildings and environmental markets. AIS was established by Global Infrastructure Solutions Inc. (GISI) and its founding members through the rebranding of their professional expertise and technical capabilities, with over 90 years of project experience in Asia.

AIS has inherited from the legacy companies of Arcadis Design & Engineering, Hyder Consulting, Acer Consultants (Far East), Freeman Fox & Partners (Far East) Asia. Our story first began in 1965 when the Hong Kong Government commissioned the firm (legacy Freeman Fox & Partners) to examine ways of relieving increasingly chronic road congestion and to deliver the first transit railway line in Hong Kong.

Our project portfolio covers a wide spectrum, spanning multiple disciplines inclusive of tunnels and bridges, building structures, building services, electrical and mechanical systems, environmental, geotechnics, rail, highways and transport, reclamation, marine and port works, drainage and water engineering. Our recent iconic projects in Hong Kong include the Integrated Waste Management Facilities Phase I, Kai Tak Trunk Road T2 and Cha Kwo Ling Tunnel, Shatin to Central Link Cross Harbour Tunnel and the Smart & Green Transit System, East Kowloon. We believe that inspiring engineering solutions are rooted in technical excellence, a deep understanding of the needs of our clients and the wider community, the ability to respond to these needs, and a genuine commitment to sustainability. AIS is a leading provider of advanced computational tools and innovative techniques for optimizing structural systems in the construction industry. We have a dedicated Innovation and Technology team that specializes in technologies such as Modular Integrated Construction (MiC), Digital Twins, Robotic Process Automation, and Generative AI to enhance the efficiency and effectiveness of delivery throughout the whole project lifecycle, and more importantly to attract and retain talents.

Contact: Alex Kwan (CEO Asia, GISI), Barry Sum (Chief Executive Officer), Dickson Law (Managing Director), Ken Lee (Managing Director)
 Fellow 5 Member 92 Graduate 40

COMPANY LISTING

Associated Engineers, Limited
23/F Stelux House,
698 Prince Edward Road East,
San Po Kong, Kowloon, Hong Kong

Tel : (852) 2767 1000
 Fax : (852) 2767 2000
 Email : info@ael.hk
 Website : www.ael.hk

Founded in 1961, Associated Engineers, Ltd (AEL) has evolved from an engineering workshop into a renowned multidisciplinary solutions provider. We specialize in Airport Engineering, Environmental Engineering, Infrastructure Engineering, Logistics & Automation, and Engineering Services.

AEL provides one-stop solution from feasibility study, design, manufacturing, project management, installation, commissioning, after-sales maintenance and plant operation. Our team comprises experienced engineers, technicians and engineering supporting staff. Over the past sixty years, AEL has consistently been entrusted by its loyal clients to undertake substantial projects.

AEL is continuously committed appropriate resources to deliver our goods and services in a sustainable manner. AEL fosters a strong culture of innovation and continuously invested in research and development over the years.

Since 1992, AEL has expanded its operations to Mainland China, actively involving in projects of refuse transfer stations, material handling system of air cargo terminal, aircraft maintenance docking / teleplatform at the airport, automated refuse transfer system for commercial complex and hospital, etc.

Contact: Barry Lee (Chief Executive Officer), K F Keung (Assistant General Manager), Nelson Ng (Head of Department), H S Tang (Head of Department)
 Fellow 1 Member 6 Graduate 13

COMPANY LISTING

ATAL Engineering Group
ATAL Tower,
45-51 Kwok Shui Road, Kwai Chung,
New Territories, Hong Kong

Tel : (852) 2561 8278
 Fax : (852) 2565 7638
 Email : info@atal.com
 Website : www.atal.com

ATAL Engineering Group
 安樂工程集團

ATAL Engineering Group ("ATAL"), established in 1977, is a leading provider of electrical and mechanical ("E&M") engineering solutions and information and communications technology ("ICT") services for smart cities, with headquarters in Hong Kong and operations in Macau, Mainland China, the United States and the United Kingdom. Serving a wide spectrum of customers from public and private sectors, ATAL provides multi-disciplinary and comprehensive E&M engineering and technology services in four major segments, including Building Services, Environmental Engineering, Information, Communications and Building Technologies ("ICBT") and Lifts & Escalators. ATAL's parent company, Analogue Holdings Limited, is listed on the Main Board of the Stock Exchange of Hong Kong (Stock Code: 1977).

Our core business mirrors the spectrum of evolving customer needs, from essential building services for commercial and residential buildings, intelligent and digital solutions, water, wastewater and solid waste treatment works, data centres, environmental engineering and climate solutions, hospitals, infrastructure and housing, ICBT services to lifts and escalators – all integral to the development of "smart cities" of the future.

In Hong Kong, our subsidiaries include:

- ATAL Building Services Engineering Limited
- ATAL Data Centre Infrastructure Limited
- ATAL Engineering Limited
- ATAL Technologies Limited
- Analogue Technical Agencies Limited
- Anlev Elex Elevator Limited
- Anlev (HK) Limited

Contact: Otto Poon (Founder), Kim Mak (Group Chairman), Raymond Chan (Chief Executive Officer), Brian Cheng (Managing Director)
 Fellow 4 Member 28 Associate 3 Graduate 9

AtkinsRéalis Asia Limited
13th Floor, Wharf T&T Tower,
Harbour City, Tsim Sha Tsui,
Kowloon, Hong Kong

Tel : (852) 2972 1000
 Fax : (852) 2890 6343
 Email : info.hk@atkinsrealis.com
 Website : www.atkinsrealis.com




Engineering a Better Future

AtkinsRéalis is a world-leading engineering services and nuclear organization that transforms global infrastructure and energy systems through the seamless integration of people, data, and technology. Our expertise spans across essential domains, from capital investment and strategic consulting to comprehensive engineering design and project delivery.

Our organization connects people, data, and technology to revolutionize the world's infrastructure and energy systems. Together with our industry partners, clients, and our global team of consultants, designers, engineers, and project managers, we drive transformational change across the built and natural environments worldwide. News and information are available at www.atkinsrealis.com or follow us on [LinkedIn](#).

Contact: Wing Law (Chief Executive Officer, Asia), Kelvin Cheng (Managing Director, Transportation and Water, Asia),
 Sam Pang (Senior Director, Building and Places, Asia), Richard Poulin (Managing Director, Industrial, Asia)
 Fellow 2 Member 84 Graduate 68

Aurecon Hong Kong Limited
Unit 1608, 16/F, Tower B, Manulife Financial Centre,
223-231 Wai Yip Street, Kwun Tong,
Kowloon, Hong Kong

Tel : (852) 3664 6888
 Fax : (852) 3664 6999
 Email : hongkong@aurecongroup.com
 Website : www.aurecongroup.com



Aurecon is an international design, engineering and advisory company that brings ideas to life to create a better future for people and the planet. We are renowned for providing high-quality and cost-efficient design and consultancy services in Greater China's Infrastructure, Built Environment, Environment, and Sustainability markets. With a team of approximately 350 local professionals, we cater to government bodies, developers, contractors, and architects in Greater China.

Our Greater China offices specialize in consulting engineering services, including civil, structural, geotechnical, tunnelling, rail services, mechanical, electrical, fire engineering, environmental, acoustic, sustainability, façades, BIM, and other specialized technical services. We work closely with our clients, co-creating clever and innovative solutions to tackle the world's most complex challenges. Throughout the project lifecycle, we add value through our deep technical expertise and advisory capabilities, serving clients across various markets and international locations.

With a network of 31 offices spanning 9 countries, Aurecon employs over 7,100 professionals dedicated to bringing ideas to life. We collaborate with our clients, leveraging our innovation, expertise, and advanced technology to solve their most intricate challenges. Our unwavering commitment to sustainability and a prosperous future drives us to make a lasting impact through our work.

Contact: Ray Chan (Managing Director, Hong Kong & Macau), Wilson Sung (Director of Operations and Structural Lead, Built Environment – Hong Kong),
 Vivian Lee (Director of Operations, Water, Environment & Sustainability – Greater China), Anita Ho (Director, Major Projects & Pursuits – Asia)
 Member 66

COMPANY LISTING

Bachy Soletanche Group Limited
Unit 1503-06, 15/F, Wing On Kowloon Centre,
345 Nathan Road, Kowloon,
Hong Kong

Tel : (852) 2369 2869
 Fax : (852) 2722 0227
 Email : bsg@soletanche-bachy.com
 Website : www.bachy-soletanche.com.hk



Our Achievements

The corner stone to the success of Bachy Soletanche Group Limited has been the superior service provided to its clients for more than five decades.

- leading edge design and construction
- award winning equipment and processes
- innovations in ground technology
- over 800 contracts successfully completed
- proven professionalism and excellence

Our Vision

BSGL's vision is to be the leading foundation and geotechnical contractor in Asia and the specialist partner of choice for owners, developers, designers and general contractors to:

- provide practical and innovative solutions to ground engineering and geotechnical problems
- design and construct quality works to satisfy all needs and requirements

Strategies

BSGL will pursue its vision by:

- technical creativity – designing of efficient and reliable geotechnical solutions and alternatives; undertaking proactive research and development closely linked to client needs and operational requests.
- powerful logistics – rapid mobilisation of human and equipment resources of quality, quantity and diversity through being resource-rich.
- business professionalism – imaginative and flexible approach to contractual arrangements; active participation in risk management and value engineering; dedication to quality and safety.

Business Associates

BSGL's sister companies providing further specialisations throughout Asia are:

- CSM Bessac – tunnelling
- Freyssinet – prestressing
- Menard Asia – ground improvement
- Geoquest – retaining works
- Sixense Limited – monitoring services

Contact: Derek Yung (Managing Director), Chris Tang (Director - Business Development), Alex Chan (Design Manager)
 Member 1

COMPANY LISTING

Binnies Hong Kong Limited
43/F AIA Kowloon Tower,
100 How Ming Street,
Kwun Tong, Kowloon, Hong Kong

Tel : (852) 2601 1000
 Fax : (852) 2601 3988
 Email : BinniesHK@binnies.com
 Website : binnies.com



Binnies is a multidisciplinary engineering consultant providing a range of innovative solutions and comprehensive technical services, covering water, environmental, civil, geotechnical, structural, urban development, transportation infrastructure and construction management. With a legacy of over 100 years, Binnies has improved the lives of people by addressing the resilience and reliability of our world's most important infrastructure assets.

As a part of the RSK Group, Binnies brings valuable specialist expertise in the following areas:

- Water supply
- Water recycling
- Waste management
- Civil infrastructure planning and design
- Wastewater management
- Flood risk management
- Specialist environmental services
- Construction management, commissioning and operations

Operating in Hong Kong since 1960, Binnies has been involved in developing most of Hong Kong's impounding reservoirs and a wide range of urban infrastructure projects, including Hong Kong's first service reservoir in cavern built on the Hong Kong University campus, the first seawater reverse osmosis desalination plant at Tseung Kwan O, the pioneering flood mitigation underground storage schemes at Tai Hang Tung and Happy Valley and various one-of-a-kind waste management facilities. Our projects have been recognized by numerous international awards for the innovation and iconic works it has delivered which have helped Hong Kong transition to a more future-ready city.

*RSK Group is a leading integrated environmental, engineering and technical services business with 15,000 employees worldwide and operations in 40 countries across the globe.

Contact: Andy Kwok (Managing Director), Stephanus Shou (Director), Norman Song (Director), Eric Lo (Director), Tony Lau (Director)
 Fellow 5 Member 101 Graduate 193

COMPANY LISTING

Build King Holdings Limited
Unit 601-605A, 6/F, Tower B,
Manulife Financial Centre, 223 Wai Yip Street,
Kwun Tong, Kowloon, Hong Kong



Tel : (852) 2272 3680
 Fax : (852) 2375 3655
 Email : info@buildking.hk
 Website : buildking.hk

With over 50 years of experience in civil engineering and construction, Build King is dedicated to effectively navigating challenges while offering a comprehensive range of services throughout the entire project life cycle. This includes early design, construction, commissioning, maintenance, facility management, and operations.

We strive to be a reliable partner for our customers, subcontractors, suppliers, and industry practitioners, working together to achieve common goals. Our core values of integrity, innovation, and professionalism guide our efforts and ensure that we uphold the highest standards in everything we do.

We focus to provide construction services that include civil engineering, building projects, environmental initiatives, as well as M&E services and high-end fitting-outs. By embracing new technologies and methodologies, we hope to enhance our service offerings and deliver more efficient, sustainable, and high-quality solutions. While we are committed to exploring innovative engineering approaches, we continuously seek to enhance our capabilities and improve our services, ensuring we meet the changing needs of the construction industry in Hong Kong.

Contact: Lui Yau Chun, Paul (Chief Operating Officer)
 Fellow 6 Member 77 Associate 1 Graduate 105

COMPANY LISTING

Carewin Engineering Ltd
Unit 1601, 16/F., Vita Green Tower,
No. 918 Cheung Sha Wan Road,
Kowloon, Hong Kong



Tel : (852) 2898 2183
 Fax : (852) 2898 1132
 Email : admin@carewinhk.com

Established in 1992 by a team of qualified engineers, **Carewin Engineering Limited** is an engineering and contracting company providing multi-discipline engineering services to our clients, which include government bodies, educational institutions, developers, hotels, property owners and facility managers.

Included in the List of Approved Contractors for Public Works under the categories of "Air-conditioning Installation" and "Electrical Installation", we are specialising in design, engineering and installation, testing and commissioning, and repair and maintenance of the following services:

- Mechanical ventilation and air conditioning (MVAC) systems & services
- Electrical systems and services
- Plumbing and drainage systems & services
- Contract and consultancy management
- System design and energy audit services

Over the last 32 years, we have been appointed to handle hundreds of projects, completed to the best satisfaction of our clients. We are committed, professional and skillful, and financially sound, and strive to ensure that each deliverable shall go above and beyond expectations of our clients.

Contact: Mr Alex Hui (Director & General Manager), Ms Lily Chow (Admin. Manager)
 Member 1 Associate 1 Graduate 4

COMPANY LISTING

Chun Lee Engineering Co Ltd
Unit 9, 4/F, Victoria Centre,
15 Watson Road,
North Point, Hong Kong



進利工程有限公司 Since 1961
CHUN LEE ENGINEERING CO LTD

Plumbing & Drainage Specialist Contractor

Tel : (852) 2573 2301
 Fax : (852) 2838 1611
 Email : cle1961@chunleeeng.com.hk
 Website : www.chunlee1961.com

Company Background

Founded in 1961, we are an established Plumbing & Drainage engineering contractor and have accumulated over 64 years of experience in this very specialized field through completion of numerous projects of all types and scales to the satisfaction of our distinguished clients.

Corporate Social Responsibility

- Our Mission is to continue to Train; our Aim is to continue to Improve; and our Vision is to continue to Contribute

Trade Qualifications

- DEVB Registered Contractor under Plumbing Installation Group II (Confirmed) on List of Approved Specialist Contractors for Public Works
- WSD Registered Plumbing Contractor (Provisional)
- CIC Registered Specialist Trade Contractor Designated Trade Building Drainage Installation Group 2
- Approved Scheme "A" Graduate Training for Engineering Graduates

Contact: Ir David Lau (Executive Director), Ir Kenneth Chan (Executive Director)
 Fellow 1 Member 1 Graduate 4

COMPANY LISTING

Chun Wo Construction Holdings Company Limited
27/F, Tower A, 83 King Lam Street,
Cheung Sha Wan,
Kowloon, Hong Kong



俊和
CHUN WO

Tel : (852) 3758 8711
 Fax : (852) 2744 6937
 Email : info@chunwo.com
 Website : www.chunwo.com

Chun Wo Construction Holdings Company Limited ("Chun Wo Construction"), a core member of Asia Allied Infrastructure Holdings Limited (stock code: 00711.HK), is a leading main contractor with over 55 years of experience in construction and engineering in Hong Kong. As one of the few local contractors awarded with five types of registration and qualifications for public projects, Chun Wo demonstrates exceptional capability in undertaking large-scale construction projects in Mainland China, Macau and overseas.

Recent significant infrastructure projects in Hong Kong that Chun Wo have undertaken include the Central-Wan Chai Bypass, Liantang/Heung Yuen Wai Boundary Infrastructure, the Hong Kong-Zhuhai-Macao Bridge Passenger Clearance Building, the Guangzhou-Shenzhen-Hong Kong Express Rail Link (Hong Kong Section) and the MTR Shatin to Central Link, etc.

Contact: Sr Stephen Lee (Chairman), Ir William Luk (Deputy Chief Executive Officer), Ir Roger Wong (Chief Operating Officer)

COMPANY LISTING

Dragages Hong Kong Limited / Bouygues Travaux Publics
26/F, Two Harbour Square,
180 Wai Yip Street, Kwun Tong,
Hong Kong



A member of the Bouygues Construction group



Tel : (852) 2511 4261
 Fax : (852) 2588 1979
 Email : enquires@dragageshk.com
 Website : www.dragageshk.com

Dragages Hong Kong has been in Hong Kong for 70 years since 1955 when the first contract was awarded in the territory to reconstruct and extend the runway at the first Hong Kong International Airport at Kai Tak. Since then, Dragages has completed many iconic projects that marked the milestones of Hong Kong development.

Dragages is recognized as a pioneer in the industry spearheading new construction technologies and techniques across its building, civil, electrical and mechanical divisions. As a full-service provider, we have the capabilities to lead complex design, build, and operate mega size projects.

Bouygues Travaux Publics (BYTP) is the sister company of Dragages, an expert in challenging projects with high added value involving tunnels, engineering structures and road, port and rail infrastructures.

Dragages and BYTP are the fully owned subsidiaries of Bouygues Construction, a global leader in construction. We leverage the network of a large multi-national corporation with its know-how in finance, design, construction, operation and innovation.

Contact: Ir Kelvin Choi (Deputy Design Director)
 Member 18 Associate 1 Graduate 34

COMPANY LISTING

Far East Consulting Engineers Limited
12/F, Greenwich Centre,
260 King's Road,
Hong Kong



Tel : (852) 2895 3888
 Fax : (852) 2895 5131
 Email : fareast@fecel.com
 Website : www.fecel.com

Far East Consulting Engineers Limited is an international multi-disciplined firm of consulting engineers, which has practiced as a firm of building services engineering consultant in Hong Kong, PRC and South East Asia since 1978. The Company is committed to the highest levels of expertise and professional standards, free of commercial interest, and are qualified and organized to provide a full consultancy services covering investigation, design, documentation and supervision for all building engineering services.

Since 1978, the Company has undertaken several hundreds of major building projects covering a wide range of building types including hotels, commercial, residential, industrial, institutional, transportation, communication, recreational facilities and health care, etc. The Company accepts full professional responsibility for the design and supervision of works executed under its control and provides comprehensive and co-ordinated services in various stages from conception to completion.

The Company has accredited to ISO 9001:2015 standard.

Contact: P L Chan (Director), Thomas W K Lau (Director), Martin C W Lee (Director), Steven H K Chu (Director)
 Fellow 1 Member 4 Graduate 9

COMPANY LISTING

Ferrier Chan & Partners Limited
17/F Marina 8,
8 Heung Yip Road,
Wong Chuk Hang, Hong Kong



Tel : (852) 2831 9199
 Fax : (852) 2831 9179
 Email : mail@fcp.com.hk
 Website : www.fcp.com.hk

Ferrier Chan & Partners (FCP) is an independent firm of consulting engineers offering full design and contract administration services in the Building Services aspects of all types of new and refurbishment projects. Completed projects include facilities for retail, commercial, industrial, medical, educational and religious purposes. Engineering systems covered by the firm's services include air-conditioning and mechanical ventilation, power supplies and electrical distribution, fire protection, plumbing and drainage, lifts and escalators, IT installations, AV systems and specialist lighting.

The firm can also provide maintenance and energy management advice and Registered Energy Assessor (REA) services.

Although most of the firm's work is Hong Kong based, projects have been undertaken in Australia, China, Guam, Hawaii, India, Indonesia, Jordan, Korea, Lebanon, Macau, Malaysia, Mongolia, New Zealand, Philippines, Singapore, Taiwan, Thailand, the United Arab Emirates and Vietnam.

FCP has been in operation since 1986 and is wholly owned by the resident directors. The firm's income derives solely from professional fees for the services it provides.

Contact: George Doyle (Director), Dunn Hoi Yan, Maria (Director), Wong Chi Man, Crinson (Director)
 Member 6

COMPANY LISTING

Fugro (Hong Kong) Limited
10/F, Fugro House – KCC2,
1 Kwai On Road, Kwai Chung,
New Territories, Hong Kong



Tel : (852) 2577 9023
 Fax : (852) 2895 2379
 Email : fhk@fugro.com
 Website : www.fugro.com

Fugro is the world's leading Geo-data specialist, collecting and analysing comprehensive information about the Earth and the structures built upon it. Adopting an integrated approach that incorporates acquisition and analysis of Geo-data and related advice, Fugro provides solutions. With expertise in site characterisation and asset integrity, clients are supported in the safe, sustainable and efficient design, construction and operation of their assets throughout the full life cycle. Employing approximately 11,000 talented people in 52 countries, Fugro serves clients around the globe, predominantly in the energy and infrastructure industries, both offshore and onshore.

Operating in Hong Kong since the early 1970s, Fugro (Hong Kong) Limited was the first international geotechnical specialist to provide services locally. Today we are one of the reputable consulting firms maintaining an engineering consultancy practice of over 200 staff providing civil, structural, geotechnical, asset integrity assessment and management, offshore and coastal engineering services to a wide variety of clients, including Government departments, private developers, architects and planners, utility companies, oil and gas companies, contractors, and other consulting engineering firms. Our expertise also embraces digitalization and innovative solutions that best suited to the Client's needs.

Contact: Gary Li (Land Director, Asia), Andes Wong (Director), Stellan Sum (Director), Tony Wan (Director)
 Fellow 2 Member 30 Graduate 32

Fugro Geotechnical Services Limited
19/F Fugro House-KCC2,
1 Kwai On Road, Kwai Chung,
New Territories, Hong Kong



Tel : (852) 2697 1126
 Fax : (852) 2694 0659
 Email : fgs@fugro.com
 Website : www.fugro.com

Fugro is the world's leading Geo-data specialist. We map, model and monitor the built and natural environment to unlock insights from Geo-data for our clients in the energy, infrastructure and water markets. We offer our clients across the globe critical insights for the safe and efficient design, construction and maintenance of assets. Working around the globe, we employ approximately 11,000 talented people in 52 countries. With our unique map, model and monitor solutions, we are building together with our clients a safer and more liveable world.

With over 40 years of experience in Hong Kong, today we work as a specialist geotechnical contractor, providing land and marine site investigation, cone penetration testing, geotechnical field testing, geophysical testing, geotechnical and structural instrumentation, automated data acquisition systems, foundation testing, and monitoring surveys in Hong Kong and throughout South-East Asia.

Contact: William Fung (Director), Fred Cheung (Director), Loo Luh Shyang (Director), Angus Kong (Instrumentation Manager)

Gammon Construction Limited
22/F, Tower 1, The Quayside,
77 Hoi Bun Road, Kwun Tong,
Kowloon, Hong Kong



Tel : (852) 2516 8823
 Fax : (852) 2516 6260
 Email : cropcomm@gammonconstruction.com
 Website : www.gammonconstruction.com

Gammon Construction is a leading construction and engineering services company in Asia, with an extensive history of over 65 years and a strong presence across Hong Kong, Mainland China and Southeast Asia.

Our mission is to build a better quality of life and living environment in a safe and sustainable manner.

Our integrated business focuses on civil, building, foundations, electrical and mechanical, facades and interiors works and design, and our construction services division provides considerable plant and steel fabrication and concrete production capabilities. We have a strong building and information modelling department, and a digital entity dedicated to furthering the commercial opportunities of our innovations.

Contact: Kevin O'Brien (Chief Executive), Hau Chi Chiu (Executive Director), Stanley Chen (Executive Director)
 Fellow 8 Member 89 Associate 1 Graduate 86

COMPANY LISTING

Great Top Engineering Limited
Flat 5, 8/F., Shiu Fat Industrial Building,
139-141 Wai Yip Street,
Kwun Tong, Kowloon, Hong Kong

Tel : (852) 2345 2219
Fax : (852) 2345 2259
Email : general@greattop.com.hk
Website : www.greattop.com.hk



GREAT TOP ENGINEERING LIMITED provides total solutions including design, supply, installation, testing & commissioning, energy management and maintenance services on MVAC, Fire Services, Electrical, Plumbing & Drainage.

With the accreditation for the quality system of ISO 9001:2015, ISO 14001:2015 and ISO 45001:2018, the goal of the company is to provide excellent services to the clients and to meet with the customers' needs and expectations.

With the support of our subsidiary company, Great Top Technical Services Limited, our maintenance and minor repair works have been strengthened.

Contact: Ir Kraven Wong (Director), Mr Benji Ng (Assistant General Manager)
Member 1

COMPANY LISTING

Hager Electro Limited
Unit 815, 8/F, Trade Square,
681 Cheung Sha Wan Road, Kowloon,
Hong Kong

Tel : (852) 2688 0228
Fax : (852) 2688 0336
Email : sales@hager.hk
Website : www.hager.com.hk & www.hagergroup.com



Hager brand, with products ranging from energy distribution through cable management and wiring accessories to building automation and security systems, represents the core business of our company. Other brands of Hager Group are Berker, Bocchiotti, Elcom, E3/DC, Efcia and Pmflex. This allows us to combine all the skills necessary for the development of innovative products, systems and services required for building automation.

Together with our customers from industry and the electrical trade, we are working on future topics such as electro-mobility with charging stations for residential buildings as well as for public infrastructures, building automation and on the networking of energy-efficient housing, which will provide greater comfort while requiring less energy consumption. The link between many of these technologies will be the distribution board, the product with which we have achieved our growth.

The company was founded in 1955 by Hermann Hager and Dr. Oswald Hager together with their father Peter, and today remains an independent business, owned and run by members of Hager family, with its head office in Blieskastel, Germany. The organisation of the company as a European Company (Societas Europaea, SE) underlines both our cultural diversity and our European roots. Hager Group is, nevertheless, a worldwide business: 13,000 employees generated a turnover of around 3 billion euros (in 2024). We produce our components and solutions in 23 production sites around the globe and customers in more than 100 countries all over the world trust in them.

Our markets include Hong Kong SAR, Macau and Taiwan where we are present through wholly owned subsidiaries and the rest of Asia where we are representing through long term partners and distributors. We support our commercial development with our factories located in Europe and China.

Contact: Keith Ho (Managing Director), K C Yuen (Sales Manager)
Member 1

COMPANY LISTING

Halcrow China Limited
22/F,
625 King's Road,
North Point, Hong Kong



Tel : (852) 2880 9788
 Fax : (852) 2565 5561
 Email : chhk@halcrow.com
 Website : jacobs.com

Halcrow China Limited (HCL) is an engineering and project delivery company with a presence in Hong Kong since 1978, as part of Jacobs since 2017. We partner with public and private clients to tackle the most complex infrastructure challenges.

During our 47 years in Hong Kong, we have contributed to the shaping of its development in the areas of roads and railway development, power and energy supply, waste management, mitigation of landslips and natural terrain hazards, and improvement of coastal environment and resilience. We have also been actively bringing out experience and knowledge, supplemented by our international expertise, to building and infrastructure development projects across the region.

*HCL is a member of the global Jacobs Solutions Inc. (Jacobs). With approximately \$12 billion in annual revenue and a team of almost 45,000, we provide end-to-end services in advanced manufacturing, cities & places, energy, environmental, life sciences, transportation and water. From advisory and consulting, feasibility, planning, design, program and lifecycle management, we're creating a more connected and sustainable world. Visit jacobs.com and connect with Jacobs on Facebook, Instagram, LinkedIn and X.

Contact: Rupert Leung (Senior Director of Operations), Vincent Au (Director), Tin Tsui (Director)
 Fellow 5 Member 25 Graduate 13

COMPANY LISTING

iAdvantage Limited
Unit 3110, 31/F,
Standard Chartered Tower Millennium City 1,
388 Kwun Tong Road, Kwun Tong, Kowloon



Tel : (852) 2208 8338
 Fax : (852) 2802 0022
 Email : enquiry@sunevision.com
 Website : www.sunevision.com & www.iadvantage.net

SUNeVision (SEHK:1686), the technology division of Sun Hung Kai Properties, is Hong Kong's largest data centre provider. Established in 1999, SUNeVision has been a leader in data centre design, construction, and management, driven by its dedication to delivering high-quality, carrier and cloud-neutral data centre services.

The company operates eight strategically located data centres, offering a total power capacity exceeding 280MW across 3 million square feet of gross floor area, while actively expanding its facilities. SUNeVision fosters a robust ecosystem that connects over 300 global providers from diverse sectors, enhancing connectivity across regions.

The MEGA Campus extends connectivity from the highly interconnected MEGA-i to other premier facilities, including MEGA Gateway, MEGA IDC, MEGA Plus and MEGA Two, all interlinked via a dedicated dark fibre network with approximately 15,000 cross-connects.

Hosting 80% of the city's Points of Presence (PoPs) for international subsea cables at MEGA-i, SUNeVision provides critical access to leading subsea cable community and supports seamless connections to multi-cloud platforms and internet exchange hubs. The development of cable landing stations HKIS-1 and HKIS-2 further solidifies its position as a connectivity leader in Asia.

SUNeVision remains steadfast in its commitment to developing advanced infrastructure and delivering exceptional services, supporting customers in their digital transformation journeys while promoting Hong Kong as a crucial information hub and strategic gateway to mainland China.

Together, we build a highly connected world.

Contact: Magdalene Lee (Director of Human Resources)
 Member 4 Graduate 4

COMPANY LISTING

ISPL Consulting Limited
Unit 3303, Citicorp Centre,
18 Whitfield Road,
Hong Kong

Tel : (852) 2797 9381
 Fax : (852) 2343 3132
 Email : info@ispl.com.hk
 Website : www.ispl.com.hk



ISPL Consulting Limited was established in 1995 and has more than 80 staff members. It provides high-quality consultancy services in building services, civil and structural engineering, energy and environmental engineering, and mechanical surveying. The company is a listed consultant for Building Services on the Hong Kong Government's Architectural and Associated Consultant Selection Board (AACSB). Additionally, it is an approved consultant for mechanical consultancy services under the Works Branch of the Development Bureau.

Every year, ISPL offers HKIE Scheme A training to graduates in Building Services Engineering, Mechanical Engineering, and Environmental Engineering. ISPL has been a quality management certified company, registered to ISO 9001:2015, ISO 14001 and HOKLAS Laboratory since 2005.

ISPL serves our clients with high commitment and offers comprehensive engineering services including:

- Building Services Consultancy
- Energy & Carbon Audits, RCx Consultancy
- BEAM Plus, LEED & WELL Certification
- MBIS & MWIS
- Lift Modernization Consultancy
- Civil, Structural & Geotechnical Consultancy
- Infrared Camera Survey
- Mechanical Survey (LALG)
- Independent Lift & Escalator Audit & Consultancy
- WiredScore & SmartScore Certifications
- Noise & Vibration, Air & Water
- Environmental Consultancy
- Calibration & Laboratory Services
- Safety Consultancy

Professions :

RPE (BSS, MCL, CVL, ENY), FHKIE, FIMechE, FCIBSE, MHKIE, MCIBSE, MICE, MIMechE, MASHARE, MSOE, MIET, MHKIOA, REA, REW (CO, H0), BEAM Pro (NB, EB, BI, ND, EDC, ES), BEAM Affiliate, RCx Pro, RCx (Level 2), WELL AP, LEED AP, WiredScore AP, SmartScore AP, Level 1 Thermography Operator, VBASA

Contact: Dr Leonard Chow (Managing Director), Tom Chow (Associate Director), C K Fok, Leo Wong, Ian Wong, Fong Wong, Henry Tsang, Gary Sin, Poole Lam, Killary Lui

Fellow 1 Member 12 Associate 25 Graduate 16

COMPANY LISTING

J. Roger Preston Limited
Level 11, Tower 1, Millennium City 1,
388 Kwun Tong Road, Kwun Tong,
Kowloon, Hong Kong

Tel : (852) 2590 9333
 Fax : (852) 2590 9897
 Email : info@jrp-group.com
 Website : www.jrp-group.com



J. Roger Preston Limited (**JRP**) is a professional engineering consultancy specializing in Mechanical & Electrical and Building Services Engineering services to the full range of construction projects including the Building, Transportation, Environmental, Industrial, Infrastructure and Energy market sectors.

Established in Hong Kong in 1962, the **JRP** Group of Companies currently employs around 500 staff in established offices in Hong Kong, Beijing, Shanghai, Shenzhen, Macau, Singapore, Malaysia and Vietnam. **JRP** is a quality, environmental, health & safety management system certified company, registered to ISO 9001:2015, ISO 14001:2015 and ISO 45001:2018.

JRP serves our clients with a commitment to engineering excellence and offers comprehensive engineering services including:

- | | | |
|--|---------------------------------------|--------------------------|
| Building Services Engineering | Intelligent Building Applications | Condition Survey |
| Acoustics and Vibration Control | Lighting | Construction Supervision |
| Electrical Power Distribution | Mechanical and Electrical Engineering | Design Audit |
| Energy Engineering | Process Utilities | Due Diligence Study |
| Fire Engineering | Public Health Services | Expert Witness |
| Gas and Fluid Distribution Systems | Sustainable Building Design | Feasibility Study |
| Heating, Ventilation and Air-conditioning | Telecommunications | Master Planning |
| Indoor Air Quality | Utility Services Infrastructure | Project Management |
| Information Technology & Communication Systems | Vertical Transportation | Risk Management |

Contact: Victor Cheung (Co-Managing Director), Joseph Leung (Co-Managing Director), C M Chung (Director), K I Lee (Director), Terence Cheung (Director), Francis Lee (Director), Raymond Tam (Director)

Fellow 3 Member 30 Graduate 40

Jacobs China Limited
22/F,
625 King's Road,
North Point, Hong Kong

Tel : (852) 2880 9788
 Fax : (852) 2565 5561
 Email : jacobschina@jacobs.com
 Website : jacobs.com

Jacobs

Jacobs China Limited is part of the Jacobs Solutions Inc. group (Jacobs) of companies, one of the world's largest and most diverse providers of professional technical services. With a nearly 50-year track record in Hong Kong, we combine deep local knowledge with the global reach, resources, and technical excellence to deliver innovative solutions for a more connected and sustainable world.

Leveraging decades of multidisciplinary experience, we offer end-to-end solutions across civil, structural, geotechnical, and building services engineering; building and infrastructure design; modular integrated construction; precast design; building surveying; and program and project management. From feasibility studies and concept development to detailed design, implementation, and asset optimization, we focus on enhancing performance, minimizing risk, and delivering long-term value across the built and natural environment.

*At Jacobs, we're challenging today to reinvent tomorrow – delivering outcomes and solutions for the world's most complex challenges. With approximately \$12 billion in annual revenue and a team of almost 45,000, we provide end-to-end services in advanced manufacturing, cities & places, energy, environmental, life sciences, transportation and water. From advisory and consulting, feasibility, planning, design, program and lifecycle management, we're creating a more connected and sustainable world. Visit jacobs.com and connect with Jacobs on Facebook, Instagram, LinkedIn and X.

Contact: Ryan Lam (Head of Office), William Ng (Director)
 Member 27 Graduate 8

Majestic Engineering Co. Ltd.
Units 1707-11 & 1716-18,
17/F, Chevalier Commercial Centre,
8 Wang Hoi Road, Kowloon Bay

Tel : (852) 2235 1881
 Fax : (852) 2391 9787
 Email : majestic@majesticeng.com.hk
 Website : www.majesticeng.com.hk



ISO 9001: 2015
 Certificate No: CC 263



ISO 14001: 2015
 Certificate No: CC 2743



ISO 45001: 2018
 Certificate No: CC 7393



As a subsidiary of FSE Engineering Group Ltd, the Company is one of the largest E&M Building Services Contracting Companies. Our Company is a Registered Electrical Contractor of EMSD, Government Recognised Group III Contractor in Electrical Installation (unlimited value), Group II Contractor in Fire Services, Group II Contractor in Plumbing Installation, Contractor in Industrial Type Electrical Installation, Broadcast Reception Installation, Burglar Alarm and Security Installation, Audio Electronics Installation, Video Electronics Installation, Security Company Licence Type III, Fire Services Department Registered Class 1 and 2 of Fire Services Installation Contractor and Approved Housing Authority Contractor in Electrical Installation. We are well experienced in handling large scale projects, such as Kai Tak Sports Park, Dorsett Kai Tak Hong Kong, AIA Building, Yip Wong Estate, The Henderson and KOKO Hills. Our Company is awarded certificates of Management Systems to ISO9001: 2015, ISO14001: 2015 and ISO45001:2018

本公司是豐盛機電工程集團有限公司的附屬公司，為香港規模最大的機電工程安裝公司之一。本公司是機電署電氣工程註冊承建商、政府認可之第I組電氣裝置承建商（可承辦無限額之工程）、第II組消防裝置承建商、第II組水管裝置承建商、工業用途電氣裝置承建商、廣播接收裝置承建商、防盜及保安裝置承建商、音響裝置承建商、視像裝置承建商、保安公司牌照類別II、消防局認可之1級和2級消防工程註冊承建商和香港房屋委員會認可之電氣工程承建商。擁有承接大型工程之豐富經驗，如啟德體育園、香港啟德帝盛酒店、友邦大廈、業旺邨、The Henderson及KOKO Hills。本公司已取得ISO9001:2015、ISO14001:2015和ISO45001:2018之管理系統認證。

Contact: C K Ko (General Manager)
 Fellow 1 Member 8 Graduate 13

A Member of FSE Lifestyle

COMPANY LISTING

Mannings (Asia) Consultants Limited
5/F, Winning Commercial Building,
46-48 Hillwood Road, Tsim Sha Tsui,
Kowloon



Tel : (852) 3168 2028
 Fax : (852) 3168 2022
 Email : manningasia@manningsasia.com
 Website : www.manningsasia.com

Mannings (Asia) Consultants Ltd is an engineering consultant in Hong Kong, wholly owned subsidiary firm of Boltek Holdings Limited (HKEX Stock Code: 8601), with a focus on the field of infrastructure developments. Since our establishment in 2005, we have accumulated our expertise in different branches of engineering, covering civil engineering mainly comprising road and structural engineering as well as geotechnical engineering; and traffic engineering. Our engineering consultancy services are widely required in various kinds of infrastructure developments.

Civil, Structural and Geotechnical Engineering - We have been the engineering consultant for a variety of infrastructure works mainly including roads, bridges, smart and green mass transit system, noise barriers, universal / barrier-free access facilities, slope improvement, buildings and foundation works, drainage and riverwalls.

Traffic Engineering - Traffic engineering generally refers to the study, planning, design and maintenance of the traffic and transportation network. Our traffic engineering services comprise collection of traffic flow data, preparation of layout plan, detailed drawings for the design of roads and related road facilities and temporary traffic management schemes.

Other Ancillary Services - Other ancillary services which mainly comprised deployment of engineering and related staff to Government authority by recruiting, employing and remunerating appropriate individuals on contract basis; advisory services on the implementation of contract administration procedures in infrastructure development project; environmental and sustainability and BIM services

Contact: Mark Cheung (Chairman), Martin Cheung (Vice Chairman), Dr Eric Li (Vice Chairman), C K Fung (Vice Chairman),
 Simon Ng (Joint Managing Director), Kenny Lam (Deputy Managing Director)
 Fellow 6 Member 56 Associate 3 Graduate 58

COMPANY LISTING

Meinhardt Consulting Engineers
10/F Genesis,
33-35 Wong Chuk Hang Road,
Hong Kong



Tel : (852) 2858 0738
 Fax : (852) 2559 1613
 Email : mcehk@meinhardt.com.hk
 Website : www.meinhardtgroup.com; www.meinhardt-china.com

Meinhardt is one of the world's few multidisciplinary and truly integrated engineering, infrastructure and project management non-listed consulting firms.

With 60+ offices and 6,000 staff worldwide, our team of experienced and responsive consultants provides a "one stop" approach for total project delivery, offering original and highly buildable design solutions that satisfy our clients' objectives.

Meinhardt's award-winning projects have garnered recognition internationally and these awards serve to affirm our unrivalled reputation for innovative and inspiring engineering solutions.

Meinhardt has been established in Hong Kong since 1974. With 1,200 staff in Hong Kong and China, our services cover all aspects of mechanical, electrical, civil and structural design for all types of construction projects, as well as project management and infrastructure such as bridges, tunnels, highways, ports, transportation, water services and waste management. We provide environmental consultancy across our projects and as standalone services. We also have a team of specialists providing services in all aspects of the façade of buildings and structures including curtain wall design, concrete repair and refurbishment.

Nevertheless, we possess a diverse range of Geospatial, Aerial, Land, Engineering and Hydrographic Surveying Consultancy Services that are vital for smart city development.

Our clients include government bodies, agencies, private developers and end-users both in industrial and commercial enterprises.

Contact: Ir Reuben Chu (Chief Executive Officer), Ir Adam Choy (Managing Director – CS), Ir Francis Kung (Managing Director – IE),
 Ir Keith Ma (Managing Director – ME), Sr Winnie Shiu (Principal Consultant - Geospatial Services)
 Fellow 11 Member 79 Associate 2 Graduate 86

COMPANY LISTING

Mott MacDonald Hong Kong Limited
3/F Manulife Place,
348 Kwun Tong Road,
Kowloon, Hong Kong



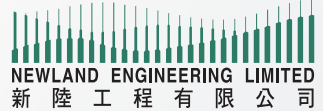
Tel : (852) 2828 5757
 Fax : (852) 2827 1823
 Email : mmhk@mottmac.com.hk
 Website : mottmac.com

Mott MacDonald is a global leader in engineering, management, and development consultancy. In Hong Kong, Mott MacDonald Hong Kong Limited, its operating arm since 1957. With over 65 years solid foundation in Hong Kong Market, Mott MacDonald has delivered professional consultancy services for some of the region's most significant infrastructure and development projects. As one of the world's largest employee-owned companies, we bring a unique perspective to our work. In Hong Kong, our team of over 650 professionals serves all sectors, including transport, buildings, water, environment, and contract advisory services. We provide sustainable, innovative, and cost-effective engineering solutions across diverse fields such as aviation, bridges and highways, geotechnical engineering, maritime, metros and tunnels, railway systems, water supply and drainage, and more. Mott MacDonald Hong Kong Limited operates an integrated management system certified to ISO 9001:2015 (Quality Management) and ISO 14001:2015 (Environmental Management) standards. With advanced design tools and expertise, we offer cutting-edge modelling services aligned with Building Information Modelling (BIM) standards. Our clients span national and local governments, commercial firms, banks, funding agencies, health and education authorities, transport operators, utilities, developers, NGOs, and private entrepreneurs. Our extensive skills, diverse sectors, comprehensive services, and global reach position us as a top-tier provider of management, engineering, and development solutions for both public and private sector clients worldwide.

Contact: Hyvan T Y Wong (Managing Director China and Hong Kong)
 Fellow 5 Member 41 Graduate 46

COMPANY LISTING

Newland Engineering Limited
A2, 4/F., Phase II, Hang Fung Industrial Building,
2G Hok Yuen Street,
Hung Hom, Kowloon



Tel : (852) 2967 8620
 Fax : (852) 2967 8630
 Email : adm@newland.com.hk
 Website : www.newland.com.hk

Our Scope of Services

Newland Engineering Limited ("Newland"), established in 1977, is one of the major building services contractors in Hong Kong. We provide complete package of professional services covering design, supply, installation, operation and maintenance for full range of electrical and mechanical (E&M) engineering services. Our expertise covers HVAC (heating, ventilation and air-conditioning), electrical services (low voltage and extra low voltage system), fire services, plumbing and drainage services and building automation system.

Our Strength

Being registered as an approved HVAC and Electrical contractor in the government, Newland, with the support of a group of experienced professional engineers, has completed many large-scale projects. These include government buildings, commercial and residential developments, hospitals, schools and hotels. Over the years, our incessant strive to improve our management system resulted in obtaining an Integration Management System (IMS) Certificate from the Hong Kong Certification Services International Limited (HKCSI), which comprises the following components:

Quality Management System, ISO 9001:2015, Certificate No. CC310;
 Environmental Management System, ISO 14001:2015, Certificate No. CC311;
 Occupational Health and Safety Management System, ISO 45001:2018, Certificate No. CC309;
 Integrated Management System (ISO 9001:2015, ISO 14001:2015 & ISO 45001:2018), Certificate No. CC308; and
 Anti-bribery Management Systems (ISO 37001:2016), Certificate No. CC630.

Contact: Mr M O Shiu (Managing Director), Mr Andy Louie (General Manager)
 Member 4 Graduate 4

COMPANY LISTING

NV5 Limited
Unit B, 5/F, 133 Wai Yip Street,
Ngau Tau Kok, Kowloon,
Hong Kong

N | V | 5

Beyond Engineering

Tel : (852) 2161 1328
 Fax : (852) 2834 7025
 Email : HongKong@NV5.com
 Website : www.NV5.com

NV5 (NASDAQ:NVEE) is a leading provider of engineering consulting, technology, and compliance solutions for public and private sector clients supporting building assets and systems, utility, and infrastructure. With more than 120 offices and 6,000 staff globally, NV5 helps clients plan, design, build, test, certify, and operate projects that improve the communities where we live and work.

In Hong Kong, NV5 is an ArchSD Band 1 - Building Services Consultancy Practice. We utilize our local resources along with our global expertise to help our clients achieve their project aspirations in Building Services, Technology, Energy & Sustainability Management, Testing, Commissioning, Acoustics, and Lighting Design. We have proven experience throughout the entire Asia-Pacific region. We take pride in helping clients develop and deliver innovative, cost-effective and sustainable projects and this is evident that a majority of our clients are returning clients that have kept coming back to us in the last 30 years.

We specialize in the following market sectors:

- Data Centers
- Hospitality/Integrated Resort
- Healthcare
- Education
- Retail
- Commercial
- Transportation

Contact: Keith Cheong (Senior Vice President), Scott Bailey (Executive Director), Frank Wang (Technical Director), Billy Tang (Project Director)
 Member 10

COMPANY LISTING

Ove Arup & Partners Hong Kong Limited
Level 5, Festival Walk,
80 Tat Chee Avenue, Kowloon Tong,
Kowloon, Hong Kong

ARUP

Tel : (852) 2528 3031
 Fax : (852) 2865 6493
 Email : hongkong@arup.com
 Website : www.arup.com

Arup advises on plans, and designs the future of the built environment. As a global consultancy with technical and advisory expertise across more than 150 disciplines, we bring a Total Design approach to our work with our clients. This is how we shape a better world.

Established in 1976, our Hong Kong office has grown into the firm's largest practice in Asia Pacific with over 2,300 professionals. By harnessing our multidisciplinary expertise, deep local knowledge, and world-leading innovation, both locally and through our global networks, we are helping to unlock transformative opportunities for clients and communities.

Today Arup's influence can be seen and felt everywhere in Hong Kong, from its tallest building to its longest bridge, at the airport gateway and through a large share of its sophisticated railway networks, to providing solutions for smart, sustainable buildings and planning the next-generation towns that will equip the city for the future.

Contact: Theresa Yeung (Managing Principal, East Asia), Wilfred Lau (Performance & Operations Director, East Asia)
 Fellow 24 Member 285 Graduate 134

COMPANY LISTING

Shun Hing Engineering Contracting Co., Ltd.
16/F, Shun Hing Centre,
2 Shing Yiu Street,
Kwai Chung, N.T.

Tel : (852) 2419 8282
 Fax : (852) 2419 8234
 Email : shecon@shunhinggroup.com
 Website : www.shecon.com



SHUN HING GROUP
信興集團
 SINCE 1953

Incorporated in 1993, Shun Hing Engineering Contracting Co., Ltd. (SHECON) is an engineering contracting company within the Shun Hing Group, which operates in Hong Kong.

The experience of SHECON dated back to 1986 when it was the Engineering Contracting Division of another Shun Hing Group Company.

SHECON provides engineering contracting and maintenance services to buildings and other E&M facilities in the following areas:

- Building E&M installations including HVAC, electrical, fire services, electronic, plumbing and drainage installations
- Water supply pumping installations
- Water treatment for HVAC system
- Gas supply system and equipment installations
- Building ceiling, partitions and raised floor installations
- Building automatic doors installation

SHECON commits to a policy of satisfying all business partners with quality products and services, and continual improvement of environmental performance.

Contact: Ma Ka Chun (Managing Director)
 Fellow 1 Member 1

COMPANY LISTING

Shun Hing Systems Integration Company Limited
16/F, Shun Hing Centre,
2 Shing Yiu Street,
Kwai Chung, N.T., Hong Kong

Tel : (852) 2423 7780
 Fax : (852) 2427 4812
 Email : shsi@shunhinggroup.com
 Website : www.shunhingsi.com



SHUN HING GROUP
信興集團
 SINCE 1953

Shun Hing Systems Integration Co., Ltd. (SHSI) is a member of the Shun Hing Group. It aims to offer a wide range of systems solution and professional services in project management, system design, installation and maintenance.

SHSI have the expertise and resources to provide full range of engineering solutions for the government, transportation sector, public utilities and private enterprise. We have delivered numerous successful projects and services to our customers such as Baggage Handling System, Platform Screen Door, Traffic Control and Surveillance System, Optical Transmission System, Radio Distribution System, Data Networking, Microwave System and Internet of Things...etc.

As part of our business development and to demonstrate our commitment to quality management, environmental protection and safety & health management, SHSI maintain the most recognized Integrated Management System (IMS) which consists of ISO 9001:2015 quality management system and ISO 14001:2015 environmental management system and ISO 45001:2018 safety & health management system certification from HKQAA.

Our ultimate missions are to:

- Offer highly competitive, value-added engineering solutions through working with our technology partners.
- Provide the competent and most cost effective project management.
- Deliver first-class maintenance and post-construction service support.

Contact: Ir Paul Ko (Managing Director)
 Member 1

Siemens Limited
10/F, Tower B, Manulife Financial Centre,
223-231 Wai Yip Street, Kwun Tong,
Kowloon, Hong Kong

SIEMENS

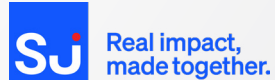
Tel : (852) 2583 3388
 Fax : (852) 2802 9802
 Email : contact.hk@siemens.com
 Website : www.siemens.com.hk

Siemens is a technology company focused on industry, infrastructure, mobility, and healthcare. The company's purpose is to create technology to transform the everyday, for everyone. By combining the real and the digital worlds, Siemens empowers customers to accelerate their digital and sustainability transformations, making factories more efficient, cities more livable, and transportation more sustainable.

In 1911, Siemens opened its first sales office in Hong Kong. Since then, the company has committed to being a trusted technology partner and providing innovative solutions in Hong Kong and Macao. Siemens has provided integrated solutions for infrastructure development projects, including electrical substation solutions, high to low voltage equipment to the power utilities, cranes technology for port, total automation solutions for water and wastewater treatment plant, AI optimization for data center. Further information is available on the Internet at www.siemens.com.hk.

Contact: Dr Xiao Song (President and CEO Siemens Greater China), Ricky Liu (Vice President and Head of SI, Hong Kong), Keith Wong (Head of EA & EP, SI, Hong Kong), Davy Guo (Head of Digital Industries, Hong Kong)

SJ Group
41/F, AIA Tower,
183 Electric Road, North Point,
Hong Kong



Tel : (852) 3995 8100
 Fax : (852) 3422 3631
 Email : hk@sjgroup.com
 Website : surbanajurong.com

Headquartered in Singapore and owned by global investment company Temasek, the SJ Group has a global talent pool of 16,000 in its member companies AETOS, Atelier Ten, B+H, CHIL, KTP, Prostruct, Robert Bird Group, SAA, SMEC and Surbana Jurong, based in more than 120 offices in over 40 countries. They include architects, designers, planners, engineers, facilities managers and other specialists driven by progressive thinking and creative ideas to shape a better future.

Its technical experts deliver sustainable solutions that cover the entire project life cycle from planning and design, through to delivery and management, as well as a full spectrum of multidisciplinary consultancy services across a wide range of sectors including commercial, cultural, hospitality, workplace, healthcare, transport, aviation, water & environment and energy.

A global urban, infrastructure and managed services consulting firm with over 76 years of track record in successful project delivery, SJ has built more than a million homes in Singapore, created master plans in more than 60 countries, reclaimed 13,000 ha from the sea and developed over 100 industrial parks globally.

In Hong Kong, SJ delivers a diverse portfolio of engineering consultancy, architectural design and program management services. Its expertise is showcased through pivotal contributions to the city's most transformative infrastructure and landmark developments. Notable projects include the Central Kowloon Route, Shatin Cavern, Express Rail Link, Sha Tin to Central Link, the HZMB HKP Passenger Clearance Building, I-PARK1 (Integrated Waste Management Facilities at Shek Kwu Chau), Kai Tak Sports Park, 11 SKIES, and essential healthcare facilities.

Contact: Andy Lee (Regional Head), Colin Chung, Dustin Lam, Jacky Yau
 Fellow 3 Member 24 Graduate 11

Skyforce Engineering Limited
18/F., Eastern Central Plaza,
3 Yiu Hing Road,
Shahekiwan, Hong Kong



Tel : (852) 2885 1620
 Fax : (852) 2886 9935
 Email : info@skyforce.com.hk
 Website : www.skyforce.com.hk

Skyforce Engineering Limited (SEL) is a trusted reputable service provider in Hong Kong, majoring in building services and specialising in heating, ventilation, and air-conditioning engineering.

With over 30 years of experience, SEL has established a team of experienced professionals who are dedicated to delivering comprehensive building services engineering solutions to our repeated customers from government, university, public, and private sectors. We specialise in a wide range of projects, including new construction and retrofitting works with relevant testing and commissioning standard. We utilise our expertise in design, installation, operation, and maintenance to ensure the highest level of quality in our services. Coupled with our energy-related services such as retro-commissioning, energy audits, and efficiency upgrades, we offer comprehensive solutions that promote sustainable development and environmentally responsible building performance for our clients.

SEL is committed to improving the quality of its management and ensuring customer satisfaction. To this end, SEL has obtained certificates for its integrity management policy, recognising its contributions to the development of a wide range of projects including high-standard data centres, cleanrooms and research laboratories, pharmaceutical laboratories, food and catering production facilities, residential and industrial buildings, as well as commercial complexes, hotels, apartments, recreational and exhibition buildings, and high-tech buildings.

SEL values high importance on nurturing young engineers. We offer the HKIE Scheme A Training Programme along with structured in-house training programs designed to develop their technical skills, support their professional growth, and build their leadership potential—preparing them to become the future leaders of the industry.

Contact: Ir Spencer Lo (Director), Ir Jason Lo (Contracts Manager)
 Member 6 Graduate 7

SOCAM Development Limited
13/F, New Kowloon Plaza,
38 Tai Kok Tsui Road,
Tai Kok Tsui, Kowloon



瑞安建業
SOCAM DEVELOPMENT

Tel : (852) 2398 4723
 Fax : (852) 2622 8520
 Email : julian.lo@shuion.com.hk
 Website : www.socam.com

SOCAM was listed on the main board of the Stock Exchange of Hong Kong in February 1997. The newly listed company combined the construction business of the Shui On Group, which was the founding business of Shui On since 1971, as well as Shui On's construction materials operations. SOCAM's early focus was on Hong Kong.

The Group played a prominent part in Hong Kong's construction boom which saw a considerable increase in private and public sector works in the late 1990s. Our construction subsidiaries, Shui On Construction and Shui On Building Contractors, stood out among their competitors in public housing construction and in prominent design and build contracts. The Group's construction materials division also prospered alongside the construction boom.

By the end of the 1990s, SOCAM had been seeking long term sustainable growth by diversifying our business, hence its early investments in Mainland cement plants, and established Lafarge Shui On Cement to form a new cement leader in the southwest region. SOCAM was also involved in the distressed property market since 2005 with the acquisition of Xiwang Building in Dalian. So far, SOCAM has turned around 22 partially completed projects located in major and secondary cities in Mainland China, many of which have been completed and disposed of.

Lafarge Shui On Cement was disposed in 2016. Today, SOCAM enjoyed a strong position in its construction and property business sectors. Building on our roots in Hong Kong, our construction business continue to play a robust role in the public sector construction and have successfully expanded into maintenance and interior fitting-out works. In Mainland China, SOCAM is taking proactive steps on asset enhancement of our retail properties.

Contact: Rita Chu (General Manager - Human Resources), Julian Lo (Manager - Management Development)
 Member 15 Associate 3 Graduate 18

COMPANY LISTING

Talent Mechanical & Electrical Engineers Limited
Unit 203, 2/F, Dominion Centre,
43-59 Queen's Road East,
Wanchai, Hong Kong



滙智 機電顧問有限公司
Talent Mechanical & Electrical Engineers Ltd.



Tel : (852) 2838 9133
 Fax : (852) 2836 0750
 Email : info@talentme.com
 Website : www.talentme.com

Established in 1992 in Hong Kong and with branch offices in Beijing, Shanghai. Talent offers M&E Consulting Service for projects in Hong Kong, Vietnam and throughout China. Talent provides design and site monitoring of all building services, meeting challenge with creative solutions. In addition to full commission, including HVAC, Boiler, Electrical & Auxiliary Services, Plumbing & Drainage, Fire Services, Vertical Transportation. Talent also offers a wide range of consultancy service such as energy analysis, energy saving & labeling, plant & services condition audits, plant performance analysis, plant overhaul consultancy, project planning & management, testing & commissioning.

Designs currently undertaken include projects for Kerry Properties, Sino Land, Link REIT, Henderson Land, Hang Lung Properties, China Resources Group, various hotel chains, universities and other developers both in Hong Kong and in China.

Talent enlisted in the M&E Consultant List of the HK Government (ASD) for Government projects: AACSB (Band 2) in 2003, EACSB (Group 2) in 2019.

Talent qualified as a registered Type B RCx Consultant under the HKGBC RCx Registration Scheme in 2022.

Contact: Dora Ho (Director), Patrick Chu (Director), Eleanor Li (Director)
 Member 7 Graduate 12

COMPANY LISTING

The Hongkong Electric Company, Limited
Hongkong Electric Centre,
44 Kennedy Road, Hong Kong



Tel : (852) 2843 3111
 Fax : (852) 2810 0506
 Email : mail@hkelectric.com
 Website : www.hkelectric.com

The Hongkong Electric Co., Ltd. is an electricity utility established in 1890 with a primary focus of generating and supplying electricity to Hong Kong Island, Ap Lei Chau and Lamma Island.

HK Electric's transmission system operates at 275 kV, 132 kV and distribution is effected at 22 kV, 11 kV and 380 V. With the exception of one short 132-kV overhead line circuit and few LV overhead lines, the entire transmission and distribution system is underground.

Currently, the Lamma Power Station has an installed capacity of 3,082.2 MW. In 2006, the first gas-fired unit was put into operation, using natural gas for power generation. Today, the power station benefits from four gas-fired units, which generate a total of 1,475 MW. Re-gasified natural gas is being supplied from the Guangdong Dapeng LNG Terminal located in Shenzhen via a 92-km submarine gas pipeline connecting the LNG terminal and Lamma Power Station Extension since 2006. In July 2023, the Floating Storage and Regasification Unit, Bauhinia Spirit, and the Hong Kong Offshore LNG Terminal were successfully commissioned and began commercial operations. Re-gasified natural gas is being supplied from the Hong Kong Offshore LNG Terminal via an 18-km submarine gas pipeline connecting the LNG terminal to the Lamma Power Station Extension, as the second source of supply of natural gas. Gas-fired generation now constitutes about 70% of HK Electric's total power output, and will continue to increase with a view to phasing out all coal-fired units by 2035.

In 2006, HK Electric also commissioned Hong Kong's first commercial-scale wind power station, Lamma Winds, with a capacity of 800 kW. In 2010, the Company introduced one of the largest commercial-scale solar power systems in Hong Kong, expanding progressively from 1 MW to 1.4 MW by 2024. Together, these renewable energy sources generate 2.2 MW of electricity supply.

As a major utility, HK Electric recognises its responsibility to protect and preserve the environment. The company sets extremely high standards for environmental protection, including air, water, noise, and land, and adopts new technologies to monitor and minimise its impact on the environment. HK Electric also encourages the community to decarbonise through its Smart Power Services, thereby supporting Hong Kong in achieving carbon neutrality by 2050.

Contact: Ms Natalie Cheung
 Fellow 10 Member 209 Associate 3 Graduate 127

COMPANY LISTING

The Jardine Engineering Corporation, Ltd.
5/F Tower A, Manulife Financial Centre,
223-231 Wai Yip Street, Kwun Tong,
Kowloon, Hong Kong



怡和機器

Jardine Engineering Corporation

Tel : (852) 2807 1717
 Fax : (852) 2807 9090
 Email : jec@jec.com
 Website : www.jec.com

Jardine Engineering Corporation (JEC) is a leading provider of engineering services, sourcing & contracting expertise, embracing the vision of engineering a better Asia. JEC enables customers to operate their facilities at world-class standards by providing the contracting expertise to design, supply and install building and specialized processes; facility operation and management; asset enhancement and energy management; and the sourcing of electrical and mechanical equipment and architectural fixtures. Established in Shanghai in 1923, JEC is now headquartered in Hong Kong and operates throughout Asia. JEC is a member of the Jardine Matheson Group.

Contact: Mr Noky Wong (Chief Executive), Mr Penn Yeung (Chief Operating Officer)
 Fellow 4 Member 25 Associate 43

COMPANY LISTING

Tony Gee and Partners (Asia) Limited
6/F Chinachem Century Tower,
178 Gloucester Road,
Wanchai, Hong Kong



ISO 9001:2015



Tony Gee

Consulting Engineers

Tel : (852) 2377 2765
 Fax : (852) 2851 0460
 Email : hongkong@tonygee.com
 Website : www.tonygee.com

Consulting Engineers, Tony Gee is renowned for delivering complex, competitive permanent and temporary infrastructure design solutions. We have a reputation for innovative thinking. We see things differently and make big ideas work. It's our people, culture, commitment and pursuit of true diversity of thought that empowers this so we invest in talent and nurture it. Our people are valued partners, and as such are instinctively committed to your success – and ours.

Design engineering is our passion but how we do it is our signature. Our highly collaborative approach alongside our technical excellence and an extensive digital and BIM capability enables us to produce innovative, efficient and buildable engineering solutions that add real value to our client's projects. We deliver unique and sustainable outcomes to ground-breaking and often complex infrastructure projects, seamlessly merging economic, environmental and social value needs for the future.

We apply an exemplary level of customer service to support contractors and other clients across our diverse project portfolio in the Asia, Australia, Canada, Middle East, and the UK. Our reputation for being able to see what isn't always obvious, runs throughout our key infrastructure sectors which include rail, highways, power and marine. From humble beginnings in 1974, we now have over 500 staff across twelve international offices.

Our recent projects include: MTR Contract 1500 TMS Station, HKAA T2 Expansion Works, IEC Boardwalk, Western Sydney Airport Metro Viaduct, Bridgewater Bridge, Tung Chung New Town Extension Major Infrastructure Works, CKR-YMTE Noise Enclosures, Tung Chung Reclamation Contract 3, Bateman Bay bridge.

Contact: Nick Southward (Managing Director), Michael Lacy (Group Director), Chris Mo-Yung (Associate Director),
 Peter Atkinson (Business Development Manager)

Fellow 1 Member 8 Graduate 3

COMPANY LISTING

Tysan Foundation Limited
20/F, One Island South,
2 Heung Yip Road,
Wong Chuk Hang, Hong Kong

Tel : (852) 2830 2669
 Fax : (852) 2808 0565
 Email : rubychan@tysan.com
 Website : www.tysan.com



ISO 9001 : 2015



ISO 14001 : 2015



ISO 45001 : 2018



泰昇集團
 TYSAN GROUP

Tysan Foundation are subsidiary of Tysan Holdings Limited, which is listed on the Hong Kong Stock Exchange, are the leading foundation piling companies in Hong Kong and carryout foundation piling works in Hong Kong and Macau. The Companies are managed and operated by experienced professional and technical staff and own one of the largest fleet of foundation plant and equipment in Hong Kong.

Tysan Foundation are Approved Contractor for Large Diameter Bored Piling, Percussive Piling and Ground Investigation Works of the Housing Authority, a Group II (unlimited contract value) Specialist Contractor in Land Piling (large diameter bored piling with bellout, minipile, driven steel H-pile, precast prestressed tubular pile, steel tubular pile, rocksocketed steel H-pile, non-percussive cast-in-situ concrete pile, hand dug caisson) and Ground Investigation of the Government's Works Bureau, and registered contractors under the categories of Foundation, General Building Contractor, Site Formation, Demolition and Ground Investigation of the Buildings Department.

In addition, Tysan Foundation are also registered under the categories of Site Formation and Landslip Preventive and Slope Works of the Works Bureau.

Through its fellow subsidiaries, the Companies also cover the spectrum of machinery hiring and property investment and development.

Contact: Tony Lau (President), Lai Kok Wai (Director), Simon Au (Director), Franky Yeung (Technical Director), Edward Cheng (Technical Director)
 Member 10

COMPANY LISTING

VSL Hong Kong Limited; Intrafor Hong Kong Limited
15/F South Island Place,
8 Wong Chuk Hang Road,
Hong Kong

Tel : (852) 2590 2288
 Fax : (852) 2590 0290
 Email : northasia@vsl-intrafor.com
 Website : www.vsl.com / www.intrafor.com



A member of
 Bouygues Construction



VSL is a key partner for specialized civil engineering projects. For more than 60 years, the Group has been providing its expertise in the field of post-tensioning for buildings and infrastructure. In addition to this core business, VSL has developed a range of added-value activities - such as the construction of bridges and containment structures, structural repairs and retrofit. Through its subsidiary Intrafor, VSL also provides complete ground engineering services spanning from geotechnical investigation and ground improvement to the construction of special foundations, such as deep diaphragm Walls. With its global presence in some 30 countries, VSL is renowned for its innovativeness and its pool of well-trained and skilled construction specialists. With 370 registered patents, its dedicated R & D Department continues to develop and improve its proprietary systems. We are part of Bouygues Construction, a global player in construction, with operations in more than 80 countries and 50,000 employees worldwide.

Contact: Henry Chan (VSL-Intrafor General Manager), Hayden Tang (VSL-Senior Business Development Manager),
 K T Ng (Intrafor - Business Development Manger)

Member 10

Wellhope Design Consulting Limited
Unit 1, 12/F, Block B, Fuk Keung Industrial Building,
66 Tong Mi Road, Mong Kok,
Kowloon, Hong Kong



Tel : (852) 3487 0068
 Fax : (852) 3487 0069
 Email : info@wellhopehk.com
 Website : www.wellhopehk.com

Wellhope Design Consulting Limited is a professional engineering consultancy offering full design and contract administration services. The former name is Wellhope Engineering Limited.

Our scope of consulting services includes:

- Building Services Engineering
- Energy Engineering
- Environmental Engineering
- Fire Engineering
- Mechanical & Electrical Engineering
- Civil Infrastructure and Development

The company is a listed AACSB and listed EACSB consultant for the above categories.

Contact: Derek Ng, Henry Lai, P Y Ng
 Member 3 Graduate 5

Wings & Associates Consulting Engineers Limited
22/F, Elite Centre,
22 Hung To Road, Kwun Tong,
Kowloon, Hong Kong



翱翔顧問工程師有限公司
 Wings & Associates Consulting Engineers Ltd.

Tel : (852) 2682 9300
 Fax : (852) 2682 8130
 Email : info@wingsconsulting.com.hk
 Website : www.wingsconsulting.com.hk

WINGS is a multidisciplinary engineering consultancy that delivers top-tier services to the construction industry. Our expert engineers drive innovation with cutting-edge technologies, offering comprehensive, one-stop solutions. We've expanded our team, blending engineering with Building Services, Digital Engineering and Building Surveying Services. Enhanced by advanced BIM services, our in-house InnoTech team develops software to automate processes, revolutionizing the field.

Vision and Values

At WINGS, we strive to lead the industry with innovative technology. We cultivate talented engineers through hands-on training, valuing talent as our core strength. Our lean structure promotes flexibility, collaboration and encouraging open idea exchange.

Certified under ISO 9001:2015 and ISO 14001:2015, we ensure excellence.

Recent awards from international and BIM competitions, along with recognition for our social and environmental initiatives, underscore our dedication. We're committed to sustainable practices, driving a greener future in engineering.

Contact: Vincent Tam (Director)
 Fellow 3 Member 10 Graduate 27

COMPANY LISTING

Wong & Ouyang (Building Services) Limited
Unit 2001-2004, 20/F, Westlands Centre,
20 Westlands Road,
Quarry Bay

Tel : (852) 2968 1808
 Fax : (852) 2968 0072
 Email : wo.bs@wobse.com
 Website : www.wobse.com



Established since 1989, Wong & Ouyang (Building Services) Ltd. is a professional consulting firm providing professional services on mechanical, electrical and building services system in Hong Kong, Macau and PRC. Our services include heating, air conditioning, electrical, fire services, plumbing and drainage, building automation and vertical transportation. We also provide services in building energy audits, design of specialized systems such as security control, PABX, hotel audio and video systems, pumping stations and CABD/Satellite TV system. Our company has been certified to a quality management system ISO 9001:2015.

Our Services range from feasibility study, planning, design, project management, contract administration, testing/commissioning and post occupancy investigation/ commissioning.

We also have overseas specialists working in association on Performance Based Fire Engineering, Ecological Sustainable Design (ESD), sophisticated Tier III or IV data centres, healthcare/public hygiene engineering and information, interior and exterior lighting Design, BIM drafting and documentation, Communication and Technologies (ICT) for a wide range of building projects.

Contact: Paul Y C Chan (Managing Director), Lai Chi Hung (Director), Szeto Wai Kit (Director)
 Fellow 2 Member 17 Graduate 8

COMPANY LISTING

WSP
7/F, One Kowloon,
1 Wang Yuen Street,
Kowloon Bay, Hong Kong

Tel : (852) 2579 8899
 Fax : (852) 2856 9902
 Email : info.hk@wsp.com
 Website : www.wsp.com



WSP is one of the world's leading professional services firms, uniting its engineering, advisory and science-based expertise to shape communities to advance humanity. From local beginnings to a globe-spanning presence today, WSP operates in over 50 countries and employs approximately 73,000 professionals, known as Visioneers.

With 12 offices throughout major cities in Mainland China, Hong Kong, Taiwan, South Korea, Malaysia, Philippines, Singapore and Thailand, WSP in Asia's team of 3,000 professionals pioneer solutions and deliver innovative projects across the transportation, infrastructure, environment, building, energy, water, advisory, digital services, project management and mission critical sectors.

Contact: Dean McGrail (President, Middle East & Asia), Paul Kau, Eric Sin, Alex Wan, Emeric Wan
 Fellow 6 Member 179 Associate 2 Graduate 133

COMPANY LISTING

Young's Engineering Co Ltd
Units 1701-6, 17/F,
Chevalier Commercial Centre,
8 Wang Hoi Road, Kowloon Bay, Kowloon



Tel : (852) 2235 0900
Fax : (852) 2529 8194
Email : youngs@fseng.com.hk
Website : www.youngs.com.hk

Young's Engineering Company Limited, established in 1972, is a member of FSE Lifestyle Services Limited (Stock Code : 0331.HK). Young's is a Building Services contracting company with approximately 500 staff members providing professional services in Hong Kong, Macau and PRC. With 50+ years of proven experience, we delivered comprehensive engineering services from initial consultation to system design, supply, installation, testing and commissioning, operation and maintenance to our prestigious clients. Our projects cover public to private sectors with a wide spectrum of building assets such as sports facilities, offices, shopping malls, hotels, healthcare, utilities, industrial, theme parks, convention & exhibitions, transport, residential and others. Kai Tak Sports Parks, Immigration Headquarter, Victoria Dockside, Macau Venetian Hotel, Gleneagles Hospital Hong Kong, Kai Tak District Cooling System, Cathay Catering Facility, Transport Department Vehicle Examination Complex, Hong Kong Disneyland Resort, Hong Kong Convention & Exhibition Centre, MTR Tseung Kwan O Depot and LOHAS Park etc. are good examples to demonstrate our professional capabilities.

Our company is a Registered Specialist Contractors (Ventilation) of Building Department, Registered Electrical Contractor of EMSD, Registered Fire Services Installation Contractor of HKFSD and List of Approved Suppliers of Materials and Specialist Contractors for Public of Development Bureau in categories of Air-conditioning Installation (Group II), Steam and Compressed Air Installation, Supply and Installation of Pumpsets and Associated Pipework and Supply and Installation of Water Treatment Plant.

We are the pioneer in the industry to develop, adopt and promote Multi-trade integrated Mechanical, Electrical & Plumbing (MIMEP) application in our projects. We offer total solutions in planning, design and fabrication of MIMEP to enhance construction productivity and efficiency to our clients.

Contact: C W Cheung, Alan Cheung, Angus Wong
Fellow 2 Member 10 Graduate 9

A Member of FSE Lifestyle
(Stock Code: 0331.hk)



45th Anniversary



One of the largest pump suppliers in Hong Kong

Superpower Pumping Engineering Co Ltd has engaged in manufacturing, agency, sales, installing, repairing and maintenance of various kinds of water pumps and plumbing equipment since 1977. Superpower is proud to become Hong Kong's one of the leading companies of water pump design and production for more than 40 years.

Job reference:



Job Ref. International Commerce Centre

SP Superpower Pumping Engineering Co. Ltd.
V-Flow Plumbing Services Ltd.
 G/F., Times Tower, 928-930 Cheung Sha Wan Road, Kowloon, Hong Kong
 Email: info@sppump.com | Website: www.sppump.com
 Tel: 2746 4933 | Fax: 2786 2307 | Whatsapp: 9720 8483



SCHOOL ADMISSION

2025-2026 (SEP INTAKE)



BEFORE 29/6
ENJOY EARLY BIRD DISCOUNT
HK\$3,000

ENGINEERING COURSES



ACCREDITED

PROFESSIONAL

PRACTICAL

Beginner Level

Summer BSE Bridging Course (Jul intake)

屋宇裝備工程暑期預習班



Bachelor Level

Bachelor of Engineering (Honours)

Building Services Engineering

屋宇裝備工程(榮譽)學士課程 (Reg. No.:252742(3))



Bachelor of Science (Honours)

Building Services Engineering - Top Up

屋宇裝備工程(榮譽)學士課程-銜接課程 (Reg. No.:252353)



Master Level

Master of Science in

Building Services Engineering

屋宇裝備工程碩士課程 (Reg. No.: 252592)



Preparation for MCIBSE CEng (APAP)

AIBE Professional Achievement Programme

英國特許工程師考牌訓練課程



☎ 2376 1933 / 📱 5508 5538

✉ general@aibe-edu.org

🌐 www.aibe-edu.org

It is a matter of discretion for individual employers to recognize any qualification to which this course may lead.

Notice: The HKIE does not pre-approve any CPD activities/courses. In regard to the academic requirements for membership of the HKIE, please refer to the accredited programmes listed in the HKIE website.

TAUGHT POSTGRADUATE PROGRAMMES IN Building Environment and Energy Engineering

Master of Engineering in Building Services Engineering

屋宇設備工程學士學位 (Programme code: 33082)

Master of Science in Building Services Engineering

屋宇設備工程學士學位 (Programme code: 33084)

Master of Science in Facility Management

設施管理學士學位 (Programme code: 33085)

Master of Science in Fire and Safety Engineering

消防及安全工程學士學位 (Programme code: 33086)

Master of Science in High Performance Buildings

高效能建築學士學位 (Programme code: 33087)

Master of Science in Carbon Neutral Cities and Urban Sustainability

碳中和城市及可持續性學士學位 (Programme code: 33088)

The Department of Building Environment and Energy Engineering (BEEE), formerly Department of Building Services Engineering (established in 1981), is internationally recognized as a centre of excellence in Building Sciences and Engineering, offering high quality academic programmes and undertaking significant research and consultancy projects.

Programme Features

- Professionally accredited
- Prepare students for professional careers and leadership positions
- Provide internationally recognized qualifications
- Provide flexible study mode



<http://www.polyu.edu.hk/bee/>

(852) 2766-5847

beenquiry@polyu.edu.hk

Application
for admission



Find out more about
our programmes



Engineering Services & Products Suppliers



Alliance Contracting Company Limited	50
CLP Power Hong Kong Limited	50
Freyssinet Hong Kong Limited	51
KMK (Asia) Limited	51
Safety, Accident, And Failure Experts Limited	52
Superpower Pumping Engineering Co Ltd	52
The Hong Kong and China Gas Company Limited.....	53
Trane Service Hong Kong	53
Wong & Cheng Consulting Engineers Limited	54

Alliance Contracting Company Limited
9/F, Sui Ying Industrial Building,
1 Yuk Yat Street,
To Kwa Wan, Kowloon



Tel : (852) 2891 9083
 Fax : (852) 2838 2120
 Email : enquiry@alcc.com.hk
 Website : www.alcc.com.hk

Alliance was founded in 1979 and after 46 years of development, Alliance Contracting Company Ltd. has established to become a reputable specialist offering quality and professional engineering services in Building Services Installations for both public and private sectors. We do have competent and professional engineering teams capable of handling full range and diverse types of building service projects, including not only new works projects but also fitting out, renovation works and maintenance contracts.

Our core business covers the design, supply, installation, operation and maintenance for the followings

- MVAC Installation
- Electrical Installation
- FS Installation
- Plumbing & Drainage Installation
- Packaged Building Services Installations
- Energy Saving & Management Projects
- Special Projects

We commit to delivery quality services to the satisfaction of client, as well as build a better city, a green and energy efficient environment for the community.

Contact: Ringo Shea (Managing Director), Stanley Leung (General Manager), WY Chow (Marketing Director)
 Fellow 2 Member 5

CLP Power Hong Kong Limited
CLP Headquarters,
43 Shing Kai Road,
Kai Tak, Kowloon



Tel : (852) 2678 8111
 Fax : (852) 2760 4488
 Email : clp_info@clp.com.hk
 Website : www.clp.com.hk

CLP Power Hong Kong Limited ("CLP Power") is the Hong Kong utility subsidiary wholly owned by CLP Holdings Limited, a company listed on the Hong Kong Stock Exchange and one of the largest investor-owned power businesses in Asia. CLP Power operates a vertically integrated electricity supply business in Hong Kong, and provides a highly reliable supply of electricity and excellent customer services to more than six million people in its supply area.

Contact: Paul Tomlinson (Chief Operations & Transformation Officer - CLP Power), Elizabeth Tai (Director - Corporate Affairs (Business Operations))
 Fellow 9 Member 283 Associate 5 Graduate 247

COMPANY LISTING

Freyssinet Hong Kong Limited
Unit 705-6, 7/F, Tower 1, Cheung Sha Wan Plaza,
833 Cheung Sha Wan Road,
Kowloon, Hong Kong



Tel : (852) 2794 0322
 Fax : (852) 2338 3264
 Email : info@freyssinet.com.hk
 Website : www.freyssinet.com

Freyssinet Hong Kong Ltd is part of the International Freyssinet Group which offers prestressed concrete services for structures and buildings together with the supply and installation of bearings, movement joints and Freyssibar prestressing system.

The company has specialist capabilities for bridge construction using segmental, incremental launching, balanced cantilever or cable stay methods of construction. In addition a full design service is available for post-tensioned floor systems, transfer plates, precast concrete, bridges and specialist bridge construction equipment. The company also undertakes geotechnical works including permanent and temporary (removable) soil and rock anchors, grouting and reinforced earth walls. Experienced personnel is available for concrete repairs, sewage treatment plant rehabilitation, structural shotcreting, structural monitoring and cathodic protection. A division is devoted to introducing trenchless technology into the drainage work market with CCTV survey, pipe relining, flow monitoring and utility surveys.

Contact: Paul Bottomley (Managing Director), Tommy Wong (General Manager), Nicolas Wotschke (Operation Manager),
 Issac Ku (Sales and Technical Manager) (Department Head – New Construction), Leo Chow (Design Manager)
 Member 2

COMPANY LISTING

KMK (Asia) Limited
Flat A, 12/F Mow Shing Centre,
118 Bedford Road,
Tai Kok Tsui, Hong Kong



Tel : (852) 2793 1822
 Fax : (852) 2793 1812
 Email : info@kmk.com.hk
 Website : kmk.com.hk

Kwong Man Kee Group (KMK), including its operating subsidiaries are a well-established construction and engineering company specialises in flooring, waterproofing system, specialized spray paint, anti-skid engineering and landscape enhancement works. We provide clients with one-stop service, from consultation, evaluation, construction, to site management and maintenance after completion.

With the established reputation and over 30 years of experience in Hong Kong, we are committed to constantly exploring the benefits of new materials, solutions and other technology, to improve quality, reduce risk and bring added value for our clients.

KMK Group are committed to pursuing adding value on shareholders, employees, working partners and society under the all-win harmonious situations. Looking forward to the future, KMK Group will continually ensure clients' satisfaction, employees' care, shareholders' value as well as support the community with sound services and products.

Contact: C H Fong

Safety, Accident, And Failure Experts Limited
G/F No.203 Cheung Shue Tan,
Tai Po, New Territories,
Hong Kong

S.A.F.E. SAFETY, ACCIDENT, AND FAILURE EXPERTS LTD.
 安全、意外及失效分析顧問有限公司

Tel : (852) 2850 6822
 Fax : (852) 2541 4517
 Email : manager@safeltd.com.hk

SAFE has undertaken a wide range of investigations and prepared independent technical reports for legal or commercial dispute resolution for government departments, contractors, consulting engineers, transport companies, utilities, insurance companies and for in-house matters.

Failure or damage to equipment

Corrosion or wear in pumps, seawater systems, sewage treatment plants, gas & water pipes, buildings, air conditioning & industrial plant

Fatigue or sudden failure of lifts & escalators, cranes, hoists, furnaces, boilers & other types of equipment

Analysis or reconstruction of accidents

Construction sites
 Factories
 Traffic & Transport systems
 Slip and fall incidents

Fire Damage & Risk Assessment

Investigation of Fire & Explosion
 Extent of damage

Product quality

Building defects
 Water Damage
 Shipping damage
 Fitness for purpose
 Copyright infringement

Microscopic & Metallurgical

Examination & assessment

What happened? How did it happen? Why did it happen? How can it be prevented in the future?
 Root cause analysis is frequently used to assess the primary causes.

Having established by Ir Dr George Greene for over 30 years, our principal consultants, Ir Dr Eric C H Lim with other consultants specialized in different fields of engineering have been providing independent technical assistance in Hong Kong, Mainland China, Macau as well as the other parts of Asia-Pacific regions. Copies of resumes of consultants can be supplied upon request.

Contact: Ir Dr Eric C H Lim, Ir Prof Y L Wong, Dr Keith S G Man
 Fellow 1 Member 2

Superpower Pumping Engineering Co Ltd
G/F., Times Tower,
928-930 Cheung Sha Wan Road,
Kowloon, Hong Kong



Tel : (852) 2746 4933
 Fax : (852) 2786 2307
 Email : info@sppump.com
 Website : www.sppump.com

Superpower Pumping Engineering Co., Ltd. ("Superpower") has engaged in manufacturing, agency, sales, installing, repairing and maintenance of various kinds of water pump and plumbing equipment since 1977. Superpower is proud to become Hong Kong's first company of water pump design and production, as well as the territory's only outlet integrating manufacture of water pumps and provision of after-sales maintenance services for 40 years.

Superpower strives to fulfill its vision and mission of delivering high-quality products and excellent services to its valuable customers. Substantial resources have been invested in every aspect of product design, research and improvement, as well as manpower and business development to meet the ever-growing demands of the customers and ensure the water supply system of the serving properties operate reliably. Nowadays, numerous professional staff are employed to provide superior repair and maintenance service to over 1,000 properties in Hong Kong ranging from deluxe residences to large scale estates, and from innovative office towers to comprehensive shopping malls, hotels and schools.

Superpower has the following key business coverage:

1. Water pump manufacturer: producing various types of water pump under the brand name of "Superpower"
2. Plumbing equipment agency: searching for high quality plumbing equipment around the world for customers
3. Maintenance & engineering service contractor: providing professional water pump system maintenance, installation and repair services

Contact: Mr O S Law (Director)
 Fellow 1 Member 3

COMPANY LISTING

The Hong Kong and China Gas Company Limited
363 Java Road,
North Point,
Hong Kong



Tel : (852) 2963 3388
 Fax : (852) 2516 7368
 Email : webmaster@towngas.com
 Website : www.towngas.com

Founded in 1862, the Hong Kong and China Gas Company Limited (Towngas) is one of the largest and most trusted energy suppliers in Hong Kong, distinguished by world-class corporate management and leading-edge business practices. With an extensive pipeline network exceeding 3,700 kilometers, Towngas proudly serves over 2 million residential, commercial and industrial customers, delivering safe and reliable energy every day.

Since expanding into Chinese mainland in 1994, Towngas has developed more than 970 projects across 29 provincial regions. These include renewable energy solutions such as solar photovoltaic, piped city-gas projects, gas supply chain, water supply and urban waste utilisation projects, as well as new energy exploration and utilisation ventures. Our mission drives us to provide customers with not only safe and reliable energy but also innovative, smart solutions that meet evolving environmental and societal needs.

In recent years, Towngas has intensified its focus on clean energy development, spearheading initiatives in hydrogen energy, green methanol for vessels, and sustainable aviation fuels (SAF), all integral to our commitment to achieving carbon neutrality.

Contact: Edmond Fong (Head of Engineering Business)
 Fellow 5 Member 57 Associate 7 Graduate 15

COMPANY LISTING

Trane Service Hong Kong
12/F., Manhattan Centre,
8 Kwai Cheong Road, Kwai Chung,
New Territories, Hong Kong



TRANE

ISO 14001 : 2015 Certificate No.: CC 3165
 ISO 9001 : 2015 Certificate No.: CC 426

Tel : (852) 2743 9010
 Fax : (852) 2785 0694
 Email : tshk@jec.com
 Website : tshk.com

Trane Service Hong Kong (TSHK), a joint venture company between Trane and Jardines, is a leading provider of engineering services for heating, ventilating and air-conditioning (HVAC) systems in Hong Kong.

The company provides full range of services, including:

- System design and installation
- Start up and commissioning
- Operation and maintenance
- Repair and overhaul
- Eddy current testing
- Oil analysis
- Turnkey contracting services
- Building automation and controls
- Ventilation certificate
- Building energy audit
- Energy retrofit services and performance contracting

TSHK is an approved air-conditioning system installation contractor (Group II) and electrical contractor. With ISO 9001:2015 and ISO 14001:2015 certification, the company is also a government-registered specialist contractor ("Ventilation Works" category) and a licensed waste collector and producer.

Contact: Frankie Chan, Danis Chan
 Fellow 2 Member 11 Associate 1 Graduate 33

Wong & Cheng Consulting Engineers Limited
9/F, 9 Wing Hong Street,
Cheung Sha Wan,
Kowloon

WONG & CHENG

CONSULTING ENGINEERS LIMITED
黃鄭顧問工程師有限公司

Tel : (852) 2866 3011
 Fax : (852) 2865 6610
 Email : wcce@wcce.hk
 Website : www.wcce.hk

Wong & Cheng Consulting Engineers Limited is a professional multi-disciplinary (Civil, Structural, Geotechnical, Building and Materials) engineering consulting firm with about 200 Staff.

Wong & Cheng Consulting Engineers Limited was originated from KNW Architects & Engineers Limited which was established in 1979 and since then we have continuously commissioned developments for private and Government sectors.

Wong & Cheng Consulting Engineers Limited is on the list of Consultants of the Architectural and Associated Consultants Selection Board, Engineering & Associated Consultants Selection Board, Geotechnical Engineering Office, Hong Kong Housing Authority, Hospital Authority, Airport Authority, Urban Renewal Authority and Works Bureau. Wong & Cheng Consulting Engineers Limited is also on the Consultant Lists of many institutional and private organizations.

We have established branch offices in China and Macau in 2000 and since then we have worked on many major projects in Macau and in various cities in China.

Wong & Cheng Consulting Engineers Limited is currently implementing and practicing ISO 9001:2015.

Contact: Chan Yin Nin, Sammy (Chairman), Kwong Po Lam (Managing Director)
 Fellow 6 Member 10 Graduate 21



香港中文大學工程學院
The Chinese University of Hong Kong
Faculty of Engineering

Master of Science / Postgraduate Diploma in Financial Technology

(Full-time / Part-time)

Contact Us:



(+852) 3943 8450



mscfintech@cuhk.edu.hk



<http://fintech.erg.cuhk.edu.hk>



Backed by the Faculty of Engineering experts, this programme aims to nurture the next generation of FinTech professionals who are technologically adept and business savvy who can offer innovative solutions to finance-related industries and thus, to secure and strengthen our lead in financial services in Asia and the world.

Programme Features

- Career-Oriented Curriculum
- Internship (for Practicum Track)*
- Industrial Projects (for Industrial Project Track)*
- Wide Range of Electives
- Mentorship
- Entrepreneurship and Pitching

*applicable to Master of Science Programme only

Admission Requirements

In addition to the General Requirements and the English Language Requirements of the Graduate School, applicants are preferably to have:

- good knowledge of mathematics (such as calculus, linear algebra and probability) and proficiency in at least one modern programming language (such as C, C++, Java or Python) as shown in academic transcript(s).
(Note: PgD Applicants are required to provide supporting documents (e.g. certificate(s), course/project information, etc.) if relevant subject knowledge could not be evidenced by the academic transcript(s).)
- obtained a Bachelor's degree in Engineering, Science, Mathematics or Finance/Business-related discipline from a recognized university or equivalent professional qualifications.
- relevant job experience would be favourably considered.

Strategic Partners



Supporting Organizations:



Industrial Project
Coordination Unit:



Notice: The HKIE does not pre-approve any CPD activities/courses. In regard to the academic requirements for membership of the HKIE, please refer to the accredited programmes listed in the HKIE website.

No.1 in Hong Kong

QS World University Rankings by Subject 2025 – Engineering & Technology

MASTER OF SCIENCE DEGREE



Application deadlines and scholarships, please visit our website

<https://seng.hkust.edu.hk/programs>



☎ 2358-8984

✉ sengmsc@ust.hk

C20250315_HKE2504

Notice: The HKIE does not pre-approve any CPD activities/courses. In regard to the academic requirements for membership of the HKIE, please refer to the accredited programmes listed in the HKIE website.

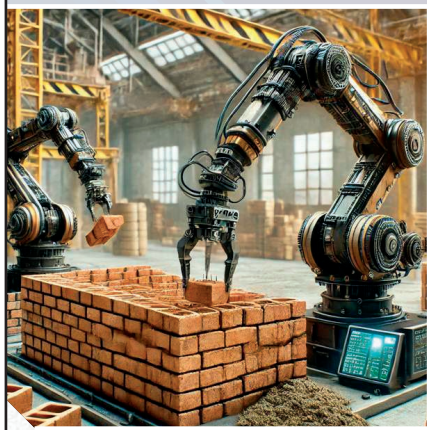


Department of Civil Engineering
The University of Hong Kong

New Programme in 2025/26

MSc(Eng) in Infrastructure Engineering and Management

Course materials consist of Digital Infrastructure and Infrastructure Project Management, AI, BIM, Automation and Robotics, Computer Vision, Infrastructure Diagnosis and Prognosis, Megaproject Management and MiC.



MSc(Eng) in Civil Engineering

- Part-time / Full-time postgraduate programme
- General Stream, Environmental Engineering, Geotechnical Engineering and Structural Engineering
- Reimbursement from the Continuing Education fund.

Register now!

 <https://www.civil.hku.hk>

 (852) 3917 1962  scheungs@hku.hk

 <https://www.facebook.com/CivE.HKU/>

Products & Services Index

Air-Conditioning & Refrigeration Engineering

Alliance Contracting Company Limited	50
ATAL Engineering Group	22
Build King Holdings Limited	25
Carewin Engineering Ltd	25
Ferrier Chan & Partners Limited	28
Great Top Engineering Limited	30
ISPL Consulting Limited	32
Newland Engineering Limited	35
NV5 Limited	36
Shun Hing Engineering Contracting Co., Ltd.	37
Siemens Limited	38
Skyforce Engineering Limited	39
Superpower Pumping Engineering Co Ltd	52
The Jardine Engineering Corporation, Ltd.	41
Trane Service Hong Kong	53
Young's Engineering Co Ltd	45

Architects, Designers, Surveyors, Valuers & Measurers

AtkinsRéalis Asia Limited	23
Ferrier Chan & Partners Limited	28
SJ Group	38

Building & Construction Equipment & Materials Suppliers

Freyssinet Hong Kong Limited	51
Hager Electro Limited	30
KMK (Asia) Limited	51
Shun Hing Engineering Contracting Co., Ltd.	37
Superpower Pumping Engineering Co Ltd	52
VSL Hong Kong Limited; Intrafor Hong Kong Limited	42

Chemicals & Chemical Products Manufacturing

KMK (Asia) Limited	51
--------------------------	----

Construction, Decoration & Engineering Contracting

Asia Infrastructure Solutions Limited	21
Associated Engineers, Limited	22
Aurecon Hong Kong Limited	23
Bachy Soletanche Group Limited	24
Build King Holdings Limited	25
Chun Lee Engineering Co Ltd	26
Chun Wo Construction Holdings Company Limited	26
Dragages Hong Kong Limited / Bouygues Travaux Publics	27
Freyssinet Hong Kong Limited	51
Fugro Geotechnical Services Limited	29
Gammon Construction Limited	29
Great Top Engineering Limited	30
Majestic Engineering Co. Ltd.	33
Meinhardt Consulting Engineers	34
Newland Engineering Limited	35
Shun Hing Engineering Contracting Co., Ltd.	37
Skyforce Engineering Limited	39
SOCAM Development Limited	39
The Jardine Engineering Corporation, Ltd.	41
Tysan Foundation Limited	42
VSL Hong Kong Limited; Intrafor Hong Kong Limited	42

Electronic & Electrical Products Trading

Fugro Geotechnical Services Limited	29
Hager Electro Limited	30

Engineering Product Suppliers

Associated Engineers, Limited	22
Carewin Engineering Ltd	25

Fugro Geotechnical Services Limited	29
Shun Hing Systems Integration Company Limited	37
Siemens Limited	38
Superpower Pumping Engineering Co Ltd	52
The Jardine Engineering Corporation, Ltd.	41
Trane Service Hong Kong.....	53
VSL Hong Kong Limited; Intrafor Hong Kong Limited	42

Engineers & Engineering Consultants

AECOM Asia Company Limited	20
Anlev Elevator Group	21
Asia Infrastructure Solutions Limited	21
ATAL Engineering Group	22
AtkinsRéalis Asia Limited	23
Aurecon Hong Kong Limited.....	23
Bachy Soletanche Group Limited	24
Binnies Hong Kong Limited	24
Carewin Engineering Ltd	25
Far East Consulting Engineers Limited	27
Ferrier Chan & Partners Limited	28
Fugro (Hong Kong) Limited.....	28
Halcrow China Limited.....	31
ISPL Consulting Limited.....	32
J. Roger Preston Limited	32
Jacobs China Limited	33
Majestic Engineering Co. Ltd	33
Mannings (Asia) Consultants Limited.....	34
Meinhardt Consulting Engineers	34
Mott MacDonald Hong Kong Limited.....	35
Newland Engineering Limited.....	35
Ove Arup & Partners Hong Kong Limited.....	36
Safety, Accident, And Failure Experts Limited.....	52
Shun Hing Systems Integration Company Limited	37
Siemens Limited	38
SJ Group.....	38
Talent Mechanical & Electrical Engineers Limited	40
Tony Gee and Partners (Asia) Limited	41

Wellhope Design Consulting Limited	43
Wings & Associates Consulting Engineers Limited	43
Wong & Cheng Consulting Engineers Limited	54
Wong & Ouyang (Building Services) Limited.....	44
WSP.....	44
Young's Engineering Co Ltd	45

Environmental Protection Products & Equipment Manufacturing

Associated Engineers, Limited	22
Hager Electro Limited	30
KMK (Asia) Limited	51

Laboratories & Testing Centres

Aurecon Hong Kong Limited.....	23
--------------------------------	----

Management Companies & Consultants

Asia Infrastructure Solutions Limited	21
ISPL Consulting Limited.....	32
Meinhardt Consulting Engineers	34
SJ Group.....	38

Miscellaneous

Skyforce Engineering Limited.....	39
-----------------------------------	----

Public Utilities

CLP Power Hong Kong Limited	50
The Hongkong Electric Company, Limited	40
The Hong Kong and China Gas Company Limited.....	53

Telecommunications Services & Product

NV5 Limited.....	36
Shun Hing Systems Integration Company Limited	37



THE HONG KONG
POLYTECHNIC UNIVERSITY
香港理工大學

Department of
Industrial & Systems Engineering
工業及系統工程學系

Taught Postgraduate programmes in Industrial and Systems Engineering

Master of Science in Industrial Logistics Systems 工業物流系統理學碩士

(Programme code: 45100-ML/MLS)



Master of Science in Knowledge and Technology Management 知識及科技管理理學碩士

(Programme code: 45100-MT/MTT)



Master of Science in Smart Manufacturing 智能製造理學碩士

(Programme code: 45100-SMF/SMP)



Industrial and Systems Engineering (ISE) is a professional discipline that focuses on developing and implementing optimal solutions from a system-level perspective. The Department not only offers professional academic programmes, but also advances academic and applied research.

Programme Features

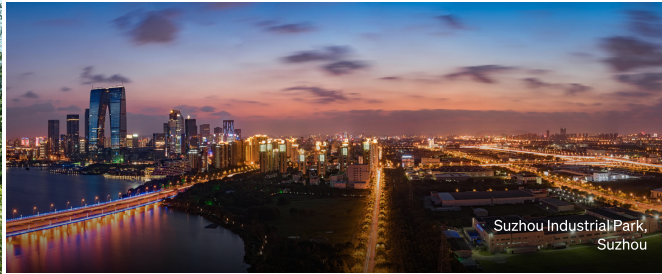
- Flexibility to choose mode of study
- Practical industry workshops and training
- Interdisciplinary and comprehensive curriculum
- Advanced learning facilities and laboratories



Real impact,
made together.



Jewel Changai Airport,
Singapore



Suzhou Industrial Park,
Suzhou



Merdeka 118,
Kuala Lumpur



Sydney Metro Northwest,
Sydney



Gardens by the Bay,
Singapore

We believe that the greatest challenges of the future can be solved today. **Real impact, made together** expresses **SJ Group's** shared commitment to creating meaningful, tangible and enduring change — shaping a brighter future for all.

GET IN TOUCH

Address: SJ Group, 41/F, AIA Tower, 183 Electric Road, North Point, Hong Kong
Tel: +852 3995 8100
Email: hk@sjgroup.com

EXPLORE OUR IMPACT
SCAN HERE



surbanajurong.com