

Practical Approaches to Smart Site Safety System (4S) Adoption

安全智慧工地系統 (4S) 實務指南

**The Hong Kong Institution of Engineers
Excellence and Standardisation Taskforce**

**香港工程師學會
卓越與標準化專責小組**



Contents

1	Introduction to the Smart Site Safety System (4S System)	1
2	Recommendations at Project Inception Stage.....	2
2.1	Technical Integration and Risk Management	2
2.2	Project Team Formation and Role Definition.....	2
2.3	Operational, Spatial, and Compliance Requirements	2
3	Recommendations on SSSS Components.....	4
3.1	Item 1 – Centralized Management Platform (CMP).....	4
3.2	Item 2 – Digitized Tracking System for Site Plants, Powered Tools, and Ladders.....	7
3.3	Item 3 – Digitalized Permit-to-work System for High-Risk Activities	10
3.4	Item 4 – Hazardous Areas Access Control (E-lock System)	13
3.5	Item 5 – Unsafe Acts Alert in Mobile Plant Danger Zone	15
3.6	Item 6 – Unsafe Acts / Dangerous Situation Alert for Tower Crane Lifting Zone	17
3.7	Item 7 – Smart Monitoring Devices for Workers and Frontline Site Personnel.....	21
3.8	Item 8 – Safety Monitoring System Using Artificial Intelligence	24
3.9	Item 9 – Confined Space Monitoring System.....	28
3.10	Item 10 – Safety Training with Virtual Reality Technology	32
4	Promoting the Adoption of Disruptive Technologies in Construction	35
4.1	Overarching Adoption Strategy: An Iterative Approach to Disruptive Technology	35
4.2	AI and LLM for Construction Safety Applications	36
4.3	Robotic Inspection for Hazardous and Inaccessible Areas.....	43
4.4	UAVs for Safety Inspections	46
4.5	Co-Development, AI Governance and Ethical Considerations	51
5	Acknowledgements.....	53

1 Introduction to the Smart Site Safety System (4S System)

In recent years, the adoption of the Smart Site Safety System (SSSS, also commonly referred to as 4S) has emerged as a pivotal initiative to elevate safety performance within the Hong Kong construction industry. Promulgated by the Development Bureau (DEVB) via Technical Circular (Works) No. 3/2023, the implementation of 4S is mandatory for capital works contracts with an estimated contract sum exceeding HK\$30 million.

Furthermore, the Buildings Department (BD) Circular Letter dated 28 March 2024 also introduced a mandatory requirement for adopting selected 4S measures for building works. With effect from 1 July 2024, projects with an estimated building works cost exceeding HK\$30 million, the registered contractor is required to adopt the Mobile Plant Alert System and Tower Crane Alert System to provide qualified supervision. This requirement shall be imposed through approval or consent conditions under the Buildings Ordinance. Other 4S devices are strongly encouraged to be adopted where practicable.

The primary objective of 4S is to continuously monitor high-risk construction activities and prevent industrial accidents through the early identification of hazardous conditions. By generating real-time alerts for site personnel, the system facilitates immediate mitigation actions. Furthermore, analyzing the data collected by 4S enables the identification of root causes of safety issues, thereby supporting the formulation of long-term enhancement measures. A standard 4S architecture typically comprises three core components:

- A **Centralized Management Platform (CMP)**;
- A robust **site telecommunication network**; and
- **Automated/remote sensing devices** (e.g., AI-enabled cameras, IoT sensors, and wearable technologies).

To further drive widespread adoption across both public and private sectors, the DEVB and the Construction Industry Council (CIC) jointly launched the Smart Site Safety System Labelling Scheme (4SLS). Under this scheme, worksites demonstrating satisfactory implementation of 4S upon assessment are issued an official label and a unique identification plaque to be prominently displayed at the site entrance. This initiative not only recognizes safety-conscious contractors but also establishes an industry benchmark for smart safety management and facilitates ease of monitoring by regulatory bodies.

Furthermore, the application of 4S is poised to expand beyond local jurisdictions. As part of broader Greater Bay Area (GBA) integration initiatives, the HKSAR Government is actively exploring the pilot implementation of Hong Kong's 4S standards in Qianhai, Shenzhen. This potential cross-boundary use case aims to facilitate the alignment of Mainland China's engineering contract and construction management systems with Hong Kong and international safety standards, demonstrating the strategic versatility and exportable value of the 4S framework.

2 Recommendations at Project Inception Stage

2.1 Technical Integration and Risk Management

- **Design Integration**

SSSS planning shall be integrated into the preliminary project phases. Spatial layout plans for SSSS devices, sensors, and surveillance cameras must be formulated to ensure comprehensive site coverage. Where applicable, the CMP shall be designed for interoperability with the project's Building Information Modelling (BIM) model.

- **Technical Expertise**

Project teams shall engage competent SSSS solution providers or designated specialists with in-depth knowledge of the deployed systems. These specialists are required to conduct regular functional verification of all SSSS components to ensure sustained and accurate operation.

- **Risk Assessment & Mitigation**

The deployment of SSSS devices must be systematically planned rather than arbitrary. A comprehensive risk assessment shall be conducted by the Safety Officer, tailored to the specific scope and nature of the construction works. Subsequently, appropriate SSSS solutions shall be selected and strategically deployed across various times and locations to effectively mitigate the identified risks.

2.2 Project Team Formation and Role Definition

- **Project Team Formation**

A multidisciplinary project team shall be established at project inception to determine the functional requirements of the SSSS, taking into account the specific nature, operational needs, and site conditions of the contract. This team typically comprises the Main Contractor, Safety Officers, and representatives from client's project and safety teams.

- **Stakeholder Responsibilities & Roles**

Clear accountability frameworks shall be established. For instance, competent site management personnel must be designated to monitor the CMP during working hours to ensure prompt responses to system alerts. Furthermore, an action plan must designate responsible supervisory staff to execute immediate follow-up actions and formalize procedures for recording all SSSS-triggered incidents.

2.3 Operational, Spatial, and Compliance Requirements

- **Future Operation Requirements**

The system shall be engineered for 24/7 automated operation, maintaining a minimum 99.9% uptime during active site hours. This necessitates the provision of a highly reliable site telecommunication infrastructure (e.g., Wi-Fi, 4G/5G, broadband, LoRaWAN) with sufficient bandwidth, capacity, and latency stability to support high-definition live video streaming and data transmission.

- **Space Utilization**

Physical spatial requirements shall be incorporated into the preliminary site office planning. This includes the allocation of space, layout design, and provision of furnishings to house the CMP workstations. Engineering-level floor plans are mandatory to delineate the fixed coordinates of hardware installations, such as AI cameras and electronic smart locks.

- **Future Maintenance**

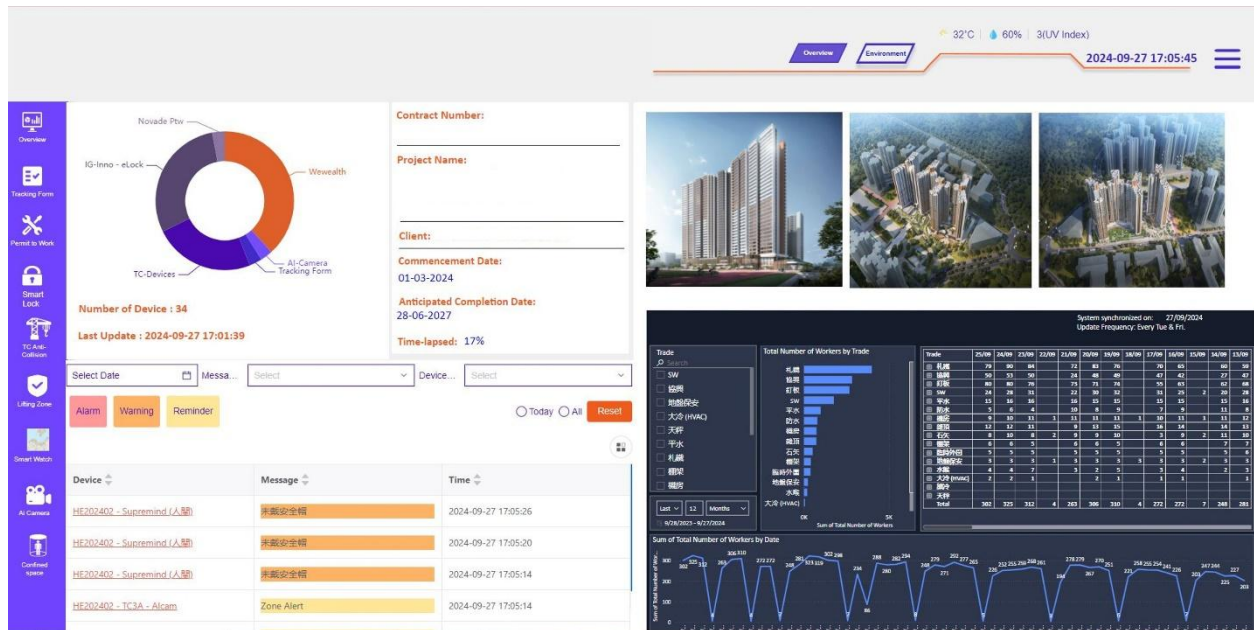
Financial and operational provisions must account for the lifecycle servicing, repair, and maintenance of all SSSS hardware and software. Project budgets shall accommodate the replacement of degraded components and the replenishment of consumables. A robust contingency plan shall be established to ensure the continuity of safety monitoring in the event of hardware or software malfunctions that cannot be immediately rectified.

- **Regulatory Compliance & Cyber Security**

The deployment of SSSS inherently involves extensive data collection. The processing of all audio, video, image, and tracking data must strictly adhere to the Personal Data (Privacy) Ordinance (Cap. 486). Project planners shall design and implement rigorous cybersecurity protocols, including data encryption measures, to safeguard the confidentiality, integrity, and availability of all transmitted project data. Relevant codes and guidelines issued by the Office of the Privacy Commissioner for Personal Data should also be duly considered to ensure compliance with applicable personal data protection requirements.

3 Recommendations on SSSS Components

3.1 Item 1 – Centralized Management Platform (CMP)



- **Safety Officer:** Suggested for managing workflows, conducting training, and monitoring subcontractor diligence.
- **Construction Manager / Site Agent / Foreman:** Recommended for coordinating physical site arrangements and equipment placement.

Key Back-office Personnel

- **4S Coordinator:** Recommended as the digitization lead and the primary liaison with 4S vendors.
- **IT Department:** Suggested for managing the database, network stability, and platform security.
- **Plant/Engineering Department:** Recommended for coordinating the on-site installation of hardware components.

C. Recommended Connection Requirements

A multi-layered connectivity framework is recommended to ensure that alerts are transmitted without delay and that records are maintained accurately.

- **Site Intranet (Internal IoT Communication)**
This is considered a critical layer for achieving instant site alerts. It is recommended that IoT devices communicate with local alarms via protocols such as **BLE, RF, LoRa, or Network bridges** etc. It is suggested that 4S suppliers provide a full solution for this IoT-to-alarm connection.
- **Internet (Field Alerts)**
For quick notifications to Safety Officers and supervisors, the use of 4G/5G SIM cards for HD Camera livestreaming, NB-IoT, or Mesh Wi-Fi for multiple PoE connections is recommended. Collaboration between the supplier, 4S Coordinator, and IT department is suggested to complete this network.
- **Internet (CMP & Record-keeping)**
Accessibility to an encrypted cloud or on-premises server is recommended for long-term data storage. The use of **Standardized APIs** is highly recommended to prevent data silos of IoT data monitoring and analysis, which the Digital Engineer should be responsible for the API collaboration. It is suggested that these APIs set a reasonable framework for data exchange (e.g., basic alert parameters) without over-constraining encryption methodologies.

Annex A of DEVB TC(W) No. 3/2023 sets out the technical requirements for the CMP and associated network infrastructure. Project planners may refer to the Circular for further details, where applicable.

D. Recommended Alert & Action Tiers

To ensure a structured and appropriate response to different safety scenarios, the following tiered alert system is recommended for the CMP:

Alert Tier	Function	Recommended Trigger Example	Recommended Notification & Follow-up
3rd Tier (Alert)	Reminder	Permit-to-work status; 30-day countdown to plant checking expiry.	<ul style="list-style-type: none"> - CMP display; - Instant message to Safety Officer and Frontline Supervisor in-charge.
2nd Tier (Alarm)	Warning	Intrusion into a restricted zone (e.g., Tower Crane zone within 7m).	<ul style="list-style-type: none"> - Site siren or lighting; - CMP display; - Instant message to Safety Officer and Supervisor.
1st Tier (Action)	Danger Response	Critical danger (e.g., Intrusion into Tower Crane zone within 3m).	<ul style="list-style-type: none"> - Site siren/lighting; Interference with the source of danger (e.g., halting plant) if possible; - CMP display; - Instant message to relevant personnel.

3.2 Item 2 – Digitized Tracking System for Site Plants, Powered Tools, and Ladders

The digitized tracking system is recommended as a centralized solution for monitoring the compliance and safety of all portable and stationary equipment on-site. By adopting this digital approach, site management can achieve higher transparency in equipment maintenance and ensure that only verified tools are in operation.

A. Recommended Hardware & Software

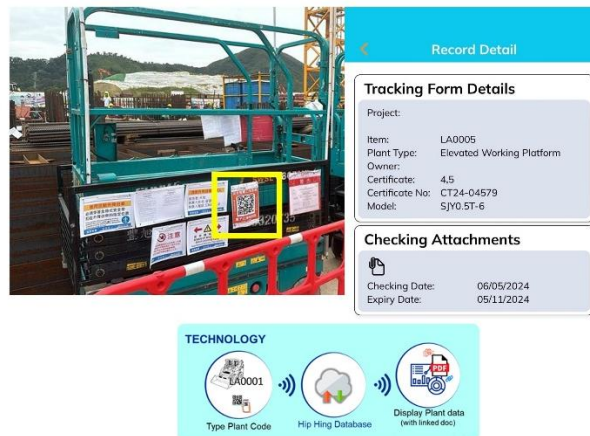


Figure 2 – Example of QR Code Application through Mobile App

For the effective setup of a tracking system, the use of durable **QR Code Labels** is recommended. These labels are recommended to be weather-resistant and securely attached to each plant, ladder, or powered tool to act as a unique identifier.

Digital Tracking Form									
#	Item	Owner Num	Checking Date	Plant Type	Owner	Certificate	Certificate No	Expiry Date	Action
8	LA0009	S19-743G	2022-12-21	Elevated Working Platform		4.5	06742-2022	2023-12-20	Download View
9	LA0008	N/A	2023-07-21	Bobcat		4.5	HY-7203-23	2024-07-20	Download View
10	LA0007	119301	2023-01-18	Elevated Working Platform		4.5	PTC20230118-41	2024-01-17	Download View
11	LA0006	11967	2023-01-05	Elevated Working Platform		4.5	PTC20230104-4	2024-01-05	Download View
12	LA0005	YF632	2022-12-30	Forklift		4.5	AP622123001-PW	2023-12-29	Download View

Alert						
#	Item	Owner Num	Checking Date	Expiry Date	Expired Remain(Days)	Type
1	LA0002	19-661	2022-08-30	2023-08-29	-104	0 or expired
2	LA0005	YF632	2022-12-30	2023-12-29	18	13-30 days
3	LA0006	11967	2023-01-06	2024-01-05	25	15-30 days
4	LA0009	S19-743G	2023-12-21	2023-12-20	9	1-14 days

Figure 3 – Example of Certification Tracking System in CMP

The hardware is supported by a **Web-based Application (App)**. This software should be designed with authenticated access controls, ensuring that sensitive safety data and tool information can only be modified by authorized personnel, such as the Main Contractor’s safety officers or designated checkers.

B. Recommended Connection Requirements

Reliable connectivity is the backbone of the digitized tracking framework, as it ensures the synchronization of data between the field and the management office.

- Site Office Network**
 A stable network within the site office is required for the initial data input, bulk uploading of equipment lists, and the management of the centralized database.
- Field Mobile Network**
 Since equipment verification happens at various locations across the site, the system relies on the users' mobile phone networks to load the information pages embedded within the QR codes.
- Centralized Platform**
 A cloud-based or local platform is necessary to host the tracking forms and provide a dashboard for real-time monitoring of the entire equipment fleet.

C. Recommended Signal Parameters

For a comprehensive digital record, the following parameters should be captured and displayed within the system. These parameters provide a full audit trail from procurement to daily inspection.

Category	Signal Parameter	Description / Requirement
Identification	Project Code	Unique identifier for the specific construction project.
	Item Code (Main Contractor)	Internal tracking number assigned by the main contractor.
	Item Code (Owner)	Asset tracking number assigned by the project owner or client.
Equipment Info	Tool Type	Classification of the item (e.g., Electric Drill, A-Frame Ladder).
	Brand (Optional)	The manufacturer of the equipment.
	Model (Optional)	The specific model number of the tool.
	Arrival Date (Optional)	The date the equipment was first brought to the site.
Certification	Certificate Type	Type of statutory or safety form (e.g., Form 2, 3, 4, 5).
	Certificate Number	The unique reference number on the safety certificate.
	Expiry Date	The date the current certification loses validity.

	Certificate Soft Copy	Digital upload (PDF/Image) of the physical certificate.
Inspection	Checking Date	The date of the most recent physical inspection.
	Updated Date	The timestamp of the last data entry in the system.
	Main-contractor Checker	Name or ID of the person who performed the check.
	Checklist (Pass/Fail/N.A.)	Itemized safety checklist (Specific to Ladders and Powered Tools).

D. Recommended Types of Alert & Alarm

The system can utilize the "Remaining Days to Expiry" parameter to trigger automated notifications. This ensures that equipment is re-certified or removed from service before it becomes a safety hazard, warning recommendations as below:

- **Expiry within 30 days (Optional Alert):** An early-stage notification to help the logistics and safety teams plan for upcoming re-inspections without disrupting site operations.
- **Expiry within 7 days (Alert):** A high-priority notification indicating that the equipment's certification is about to lapse, requiring immediate scheduling of an inspector.
- **Expired (Alarm):** A critical system alarm. The tool should be digitally flagged as "Unsafe" or "Prohibited," and management should be notified to ensure the item is physically removed from the working area.

3.3 Item 3 – Digitalized Permit-to-work System for High-Risk Activities

#	Type Of Form	Form Name	Working Location	Create By	Working Datetime	Contact Number	Type Of Work	Work Nature	Form Status
1	(PTW) 熱工序 Draft v2 (4S)	HB202302-S-08D-Superstr ncture (Podium) Zone 1 (G.L.P-1-P-5)Sub-007			28/05/2024 09:00:00 - 28/05/2024 18:00:00	96125536	水喉	處理切割	被拒絕
2	(PTW) 熱工序 Draft v2 (4S)	HB202302-S-08D-Superstr ncture (Podium) Zone 1 (G.L.P-1-P-5)Sub-016			07/06/2024 09:00:00 - 07/06/2024 18:00:00	96125536	水喉	處理切割	申請待審人, 分別向負責人
3	(PTW) 熱工序 Draft v2 (4S)	HB202302-S-08D-Superstr ncture (Podium) Zone 1 (G.L.P-1-P-5)StructuralWall-018	新車房機台, 主樓樓層B1		06/06/2024 08:00:00 - 06/06/2024 18:00:00	93723377	鐵器	處理切割	已批准發證人, 當區管工

#	Type Of Form	Form Name	Working Location	Create By	Working Datetime	Contact Number	Type Of Work	Work Nature	Form Status
1	(PTW) 熱工序 Draft v2 (4S)	HB202302-S-08D-Superstr ncture (Podium) Zone 1 (G.L.P-1-P-5)StructuralWall-018	新車房機台, 主樓樓層B1		06/06/2024 08:00:00 - 06/06/2024 18:00:00	93723377	鐵器	處理切割	已批准發證人, 當區管工
2	(PTW) 熱工序 Draft v2 (4S)	HB202302-S-08D-Superstr ncture (Podium) Zone 1 (G.L.P-1-P-5)StructuralWall-015	新車房機台, 機台位		07/06/2024 08:00:00 - 07/06/2024 18:00:00	93723377	鐵器	處理切割	已批准發證人, 當區管工

Figure 4 – Example of Permit-to-work System in CMP Dashboard

The Digitalized Permit-to-work system is recommended to transition high-risk activity approvals from paper-based logs to the **Digital Works Supervision System (DWSS)**. This ensures that safety protocols for critical tasks, such as hot work or confined space entry are strictly enforced and auditable in real time.

A. Recommended Hardware & Software



Figure 5 – Example of Permit-to-work System through Mobile Devices

Unlike traditional IoT setups, this system is primarily software-driven to ensure maximum accessibility across the site. It is recommended to utilize a specialized **"Permit-to-work" module** integrated within the existing **Digital Works Supervision System (DWSS)** framework to maintain data consistency.

To lower the barrier for frontline adoption, no specialized field hardware is required. The system is designed to run on the existing mobile devices and tablets already used by site personnel. The software interface is recommended to support multi-stage

digital signatures and automated checklist verification to ensure all safety prerequisites are met before a permit is active.

B. Recommended Connection Requirements

To ensure data flows seamlessly from the site to the management level, two layers of connectivity are required:

- **Site Office Network:** A stable LAN/Wi-Fi connection is recommended for initial data input, bulk planning and administrative oversight.
- **Field Mobile Network:** Frontline users are suggested to use **4G/5G mobile data** to load the permit pages embedded within **site-specific QR codes**, ensuring that permits are activated exactly where the work is occurring.

C. Recommended Signal Parameters

To maintain a robust digital audit trail, the following parameters must be captured and synchronized with the CMP:

- **Permit Type:** Categorized by risk (e.g., Lift Shaft, Lifting, External Wall, Ceiling Work, Live Power Ceiling Access, Confined Space, Major Plant Maintenance, Hot Work, Narrow Space Ladder Use, Switch Room Access and Balcony Work).
- **Operational Data:** Working Location, Created By (User ID), Applicant Contact Number, Type of Work (e.g., Plumbing & Drainage) and Work Nature (e.g., Oxy-acetylene Cutting).
- **Timestamps:** Precise "Working Date & Time From" and "To" parameters.
- **Form Status:** Real-time tracking including *Awaiting Reply*, *Delaying Approval*, *Approved*, *Rejected*, *Applying for Withdrawal*, *Delaying Withdrawal Approval*, and *Withdrawn*.
- **Safety Checklist:** A mandatory binary field (Pass/Fail/N.A.) for every safety precaution.

D. Recommended Alert & Action Tiers

Alert Tier	Function	Recommended Example	Trigger	Recommended Notification & Follow-up
------------	----------	---------------------	---------	--------------------------------------

3rd Tier (Alert)	Reminder	Permit is nearing its scheduled start or end time.	CMP dashboard notification; Instant message to the Applicant.
2nd Tier (Alarm)	Workflow Delay	Delaying Approval or Delaying Withdrawal Approval.	Escalation message to the Safety Officer to prevent site bottlenecks or safety lapses
1st Tier (Action)	Safety Breach	Schedule ends without a Withdrawal Application.	High-priority alert to the Site Agent. Immediate physical check required to ensure workers have safely vacated the high-risk zone.

3.4 Item 4 – Hazardous Areas Access Control (E-lock System)

The E-lock and Key system is recommended to provide a physical and digital barrier for restricted zones. By replacing traditional padlocks with IoT-enabled locks, the site can ensure that only authorized personnel with valid permits can enter dangerous areas.

A. Recommended Hardware & Software



Figures 6, 7 & 8 – Example of E-lock Authentication on Lift-Shaft (Left), Storage Room for Dangerous Goods (Middle), and Electrical Box (Right)

A complete hardware-to-cloud ecosystem is required for this deployment to ensure restricted zones remain secure. It is recommended to install **Industrial IoT E-locks** and **Signal Gateways**, complemented by **at-scene alarm bells** to provide immediate local alerts during unauthorized entry.

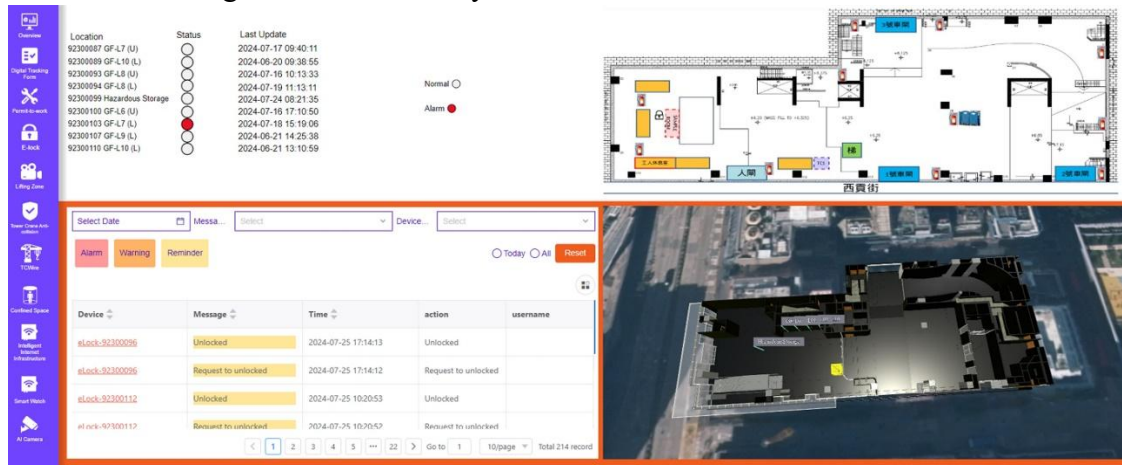


Figure 9 – Example of E-lock System Monitoring Interface

For flexible site management, the use of **Authenticated Keys**, including RFID cards, mobile apps or smartphone-delivered **Random Passwords (OTP)** is highly recommended. These hardware components should be supported by a dedicated software platform capable of recording access logs, monitoring lock battery health and managing user permissions in real-time.

B. Recommended Connection Requirements

Depending on the site topography, the following protocols are recommended:

- **SIM Card:** Direct cellular connection (subject to local signal strength testing).
- **LoRaWAN:** Recommended for deep signal penetration, requiring a **PoE (Power over Ethernet)** network backbone.
- **Wi-Fi:** Suitable for indoor areas, requiring localized cable laying for access points.

C. Recommended Signal Parameters

- **Identity & Location:** Project ID, Lock ID, Worker ID and Worker Company (Optional).
- **Status & Health:** Lock Status (Opened, Locked, Alert), Battery Level and Routine "Health Check" reports.
- **Temporal Data:** Timestamped events (Date, Time, Timezone).

D. Recommended Alert & Action Tiers

Alert Tier	Function	Recommended Example	Trigger	Recommended Notification & Follow-up
3rd Tier (Alert)	System Health	Low Battery	or Routine status report.	Notification to the 4S Coordinator for battery replacement or system maintenance.
2nd Tier (Alarm)	Abnormal Activity	Lock Vibration detected (potential tampering).		CMP display alert; Safety Officer is suggested to check the AI camera feed or dispatch a supervisor.
1st Tier (Action)	Security Breach	Lock (Unauthorized/Illegal opening).	Picking	Site Siren activation; Instant "Critical Alert" to the Safety Officer and Site Agent for immediate interception.

3.5 Item 5 – Unsafe Acts Alert in Mobile Plant Danger Zone

This system is recommended to mitigate "Person-to-Machine" collisions through AI-driven visual analysis and multi-sensor fusion.

A. Recommended Hardware & Software

A multi-layered hardware suite is required to provide 360-degree protection and prevent person-to-machine collisions. This includes the installation of **AI-enabled cameras** (either a single 360° unit or 4+ conventional units) linked to an on-board analysis engine capable of humanoid recognition.

The system is recommended to feature an **In-cab Monitor and Audio Alarm** for the operator, along with external **Flashing Sirens and Smart Watches/RFID/BLE Tags** to provide haptic and audible warnings to ground workers. To ensure compliance with regulatory standards, the hardware must include a **DVR for incident recording** and embedded algorithms specifically tuned to monitor encroaching within a **≤ 2m danger zone**.

B. Recommended Connection Requirements

- **Mobile Network: 4G/5G SIM Cards** are critical for high-speed data and video transmission to the CMP.
- **Local Network:** Wi-Fi for localized sensor communication.
- **Power:** Dedicated **Electricity Cabling** for the AI Camera and DVR system.

C. Recommended Signal Parameters

In accordance with DEVB TC(W) No. 3/2023 Annex A Clause 5(12)(e)¹, the following data must be logged:

- **Device Info:** Mobile Plant/Device ID and GPS location.
- **Evidence:** Instant Photos of the intrusion and **Video clips** capturing the incident (before and after the trigger).
- **Alert Type:** Specific classification of the unsafe act.

D. Recommended Alert & Action Tiers

¹ DEVB TC(W) is intended for capital works contracts and should not be regarded as a regulatory requirement. Nevertheless, project planners are recommended to follow the relevant provisions when applicable.

Alert Tier	Function	Recommended Trigger Example	Recommended Notification & Follow-up
3rd Tier (Alert)	Behavioral	Operator distracted or not following PPE protocols.	In-cab audio reminder; record logged for safety training.
2nd Tier (Alarm)	Proximity Warning	Worker detected approaching the 5m caution zone.	External flashing siren; ground worker's Smart Watch vibrates.
1st Tier (Action)	Danger Response	Illegal intrusion in the < 2m danger zone.	High-decibel Siren ; Auto-capture of photo/video; Instant notification to CMP; Operator must halt machine immediately.

3.6 Item 6 – Unsafe Acts / Dangerous Situation Alert for Tower Crane Lifting Zone

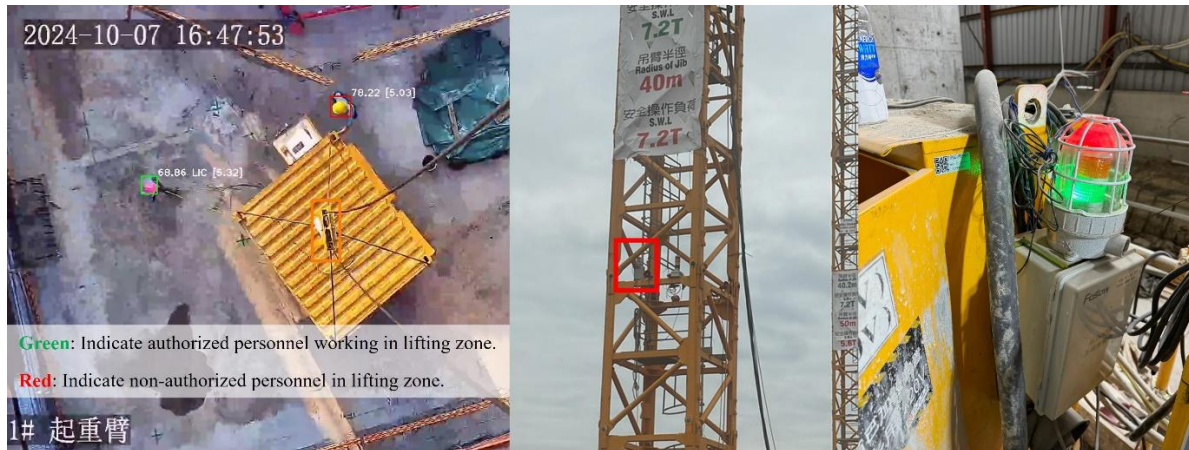


Figure 10 – Example of Alert System for Tower Crane Lifting Zone

This system is recommended to prevent falling-object incidents, load swing impact, and unauthorized intrusion into tower crane lifting zones through AI-assisted monitoring and real-time zone protection.

A. Recommended Hardware & Software

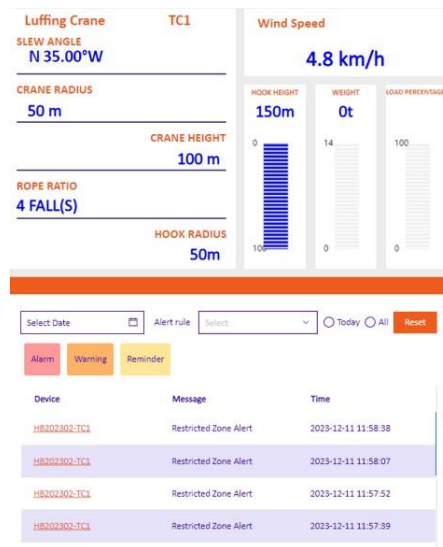


Figure 11 – Example of Tower Crane Monitoring System

A multi-layered sensing and warning architecture is recommended to ensure compliance with lifting safety regulations and requirements on 4S stated in DEVB TC(W) No. 3/2023².

1. Hardware Components

- AI-enabled IP Cameras

² DEVB TC(W) is intended for capital works contracts and should not be regarded as a regulatory requirement. Nevertheless, project planners are recommended to follow the relevant provisions when applicable.

- Installed to cover:
 - Loading/unloading zones
 - Hook travel path
 - High-risk floor levels
- Minimum 1080p resolution
- Weatherproof casing (IP66 or above)

- **Hook-mounted or Trolley-mounted Sensors**
 - UWB / RFID / Laser distance sensors
 - Real-time hook position tracking
 - Load-height and clearance monitoring

- **Danger Zone Virtual Geofencing Module**
 - Configurable minimum:
 - 7m radius from crane hook (as per SSSS requirement)
 - Minimum 3m load-to-platform clearance

- **Hook-mounted Siren with Flashing Beacon**
 - Minimum 100 dB
 - Red flashing visual alert

- **Operator Cabin Alert System**
 - Visual dashboard warning
 - Audio alarm
 - Optional vibration alert

- **DVR / NVR**
 - Records:
 - 15 seconds before intrusion
 - Until 10 seconds after clearance

- **CMP Integration Module**
 - Real-time streaming to Centralized Management Platform
 - API-compatible with DWSS (if integrated)

B. Recommended Connection Requirements

1. Local Site Communication (Critical Layer)

- UWB / RF / LoRa for:
 - Hook position tracking
 - Sensor-triggered alerts
- Hardwired or secure wireless link to operator cabin

2. Internet Transmission

- 4G/5G SIM (Primary)
- Site Mesh Wi-Fi / PoE backbone (Alternative)
- Encrypted HTTPS (minimum 256-bit SSL)

3. Redundancy

- Local alarm must function **independently** of internet connectivity.
- CMP notification is secondary to immediate site alarm.

C. Recommended Signal Parameters

In accordance with DEVB TC(W) No. 3/2023 Annex A Clause 5(12)(e)³ and Lifting COP:

1. Crane & Device Data

- Project ID
- Tower Crane ID
- Hook Position (X/Y/Z coordinates if available)
- Load Height
- Slewing Angle
- Trolley Radius

2. Zone Monitoring Data

- Configured Danger Zone Radius ($\geq 7\text{m}$)
- Minimum Load Clearance Threshold ($\geq 3\text{m}$)
- Restricted Zone Coordinates
- Floor Level ID

3. Intrusion Data

- Person ID (if wearable device enabled)
- AI Detection Confidence Level
- Intrusion Timestamp
- Duration of Encroachment

4. Evidence Capture

- Auto-captured image
- Video clip (minimum 15 seconds before to 10 seconds after event)
- Alert classification

5. Response Data

- Operator reaction time
- Time to crane halt
- Supervisor acknowledgement time

³ DEVB TC(W) is intended for capital works contracts and should not be regarded as a regulatory requirement. Nevertheless, project planners are recommended to follow the relevant provisions when applicable.

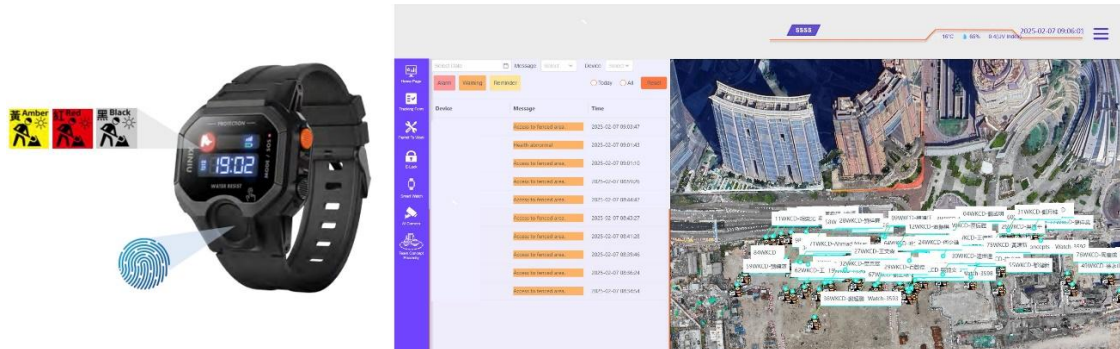
D. Recommended Alert & Action Tiers

Alert Tier	Function	Recommended Trigger Example	Recommended Notification & Follow-up
3rd Tier (Alert)	Early Warning	Worker enters 10m caution zone (outside 7m danger zone)	CMP notification; Supervisor reminder; Toolbox follow-up if repeated
2nd Tier (Alarm)	Zone Intrusion	Worker enters ≤ 7 m lifting zone while hook is active	Hook siren & flashing beacon; Cabin alarm; CMP notification; Supervisor inspection
1st Tier (Action)	Critical Danger	Worker within ≤ 3 m of moving load or beneath suspended load	Immediate 100 dB siren; Crane motion halt (if feasible); CMP critical alert; Site Agent & Safety Officer immediate physical intervention

3.7 Item 7 – Smart Monitoring Devices for Workers and Frontline Site Personnel

This system is recommended to improve the safety management of workers and frontline site personnel through smart devices. The smart monitoring device system is recommended as a worker-centric safety layer for continuous monitoring of personnel condition, location and emergency status. By equipping workers and frontline site personnel with wearable smart devices, site management can strengthen real-time supervision, improve emergency response, and generate auditable records for follow-up actions through the Centralized Management Platform (CMP).

A. Recommended Hardware & Software



Figures 12 & 13 – Example of Smart Watches (real-time heart rate & temperature tracking for critical workers) (Left) and Smart Wearable Monitoring System in CMP(Right)

It is recommended that every worker and frontline site personnel deployed for the Works be provided with a smart wearable device, such as a smart helmet, smart wristband, or equivalent wearable tag. The device is recommended to support at least the following core functions:

- indoor and outdoor location tracking;
- standstill / motion anomaly detection;
- emergency SOS activation;
- real-time body temperature and heart-rate monitoring;
- optional fall detection and geofence alerting for restricted areas.

For higher-risk or larger sites, it is recommended that the wearable device be paired with UWB/BLE location tags, fixed gateways, and a cloud- or server-based dashboard integrated with the CMP. It is also recommended that a worker mobile application be used to link the wearable with worker identity, attendance, permit status, and training records.

B. Recommended Connection Requirements

A layered communication arrangement is recommended to ensure timely alerts and stable record-keeping:

- Wearable-to-gateway communication: BLE / UWB / LoRa is recommended for local site-level positioning and low-latency alert transmission.
- Gateway-to-platform transmission: 4G/5G, NB-IoT or site Wi-Fi is recommended for uploading data, especially where multiple floors, basements or temporary works areas are involved.

- CMP integration: All alerts, worker location data and device health records are recommended to be transferred to the CMP or equivalent control platform through encrypted APIs.
- Charging and uptime management: A central charging cabinet and daily battery checking routine are recommended to reduce device downtime.

C. Recommended Signal Parameters

To maintain a complete digital audit trail, the following parameters are recommended:

1. Worker Identity Data

- Project ID
- Worker ID / staff number
- Worker name
- Trade / role
- Employer / subcontractor
- Shift / attendance status

2. Location & Activity Data

- Real-time location
- Floor / work zone
- Entry into restricted or geofenced zone
- Motion status
- Standstill duration
- Last movement timestamp

3. Physiological / Welfare Data

- Body temperature
- Heart rate
- Optional fatigue-related indicator
- SOS activation
- Fall / sudden motion anomaly

4. Device Health Data

- Device ID
- Device type
- Battery level
- Last sync time
- Network status

5. Training / Authorization Data

- Safety induction completion status
- VR training completion status for relevant high-risk trades
- Permit-related authorization status

These data points reflect the core official functions for smart monitoring devices in Hong Kong, for example location tracking, standstill detection, body temperature and heart-rate alerting and also reflect how previous local projects linked wearables with worker identity and training records.

D. Recommended Alert & Action Tiers

Alert Tier	Function	Recommended Trigger Example	Recommended Notification & Follow-up
3rd Tier (Alert)	Reminder/ Notification	Low battery, worker entering a caution buffer zone, or body temperature / heart-rate trend approaching a preset threshold.	CMP display, app notification to Safety Officer / frontline supervisor, reminder to worker to report for checking.
2nd Tier (Alarm)	Warning	Standstill beyond preset time, unauthorized entry into a restricted area, or threshold exceedance in heart-rate / temperature alerting.	local vibration / sound on wearable; instant message to Safety Officer and responsible supervisor; physical verification by nearby supervisor or first aider.
1st Tier (Action)	Emergency Response	SOS activation, detected fall, prolonged immobility in a hazardous zone, or simultaneous welfare anomaly plus restricted-area intrusion.	critical alert at CMP; immediate dispatch of first aider / supervisor; suspension of related work activity in the immediate vicinity until worker status is confirmed. This tier is also recommended to generate an incident log for post-event review and training follow-up.

3.8 Item 8 – Safety Monitoring System Using Artificial Intelligence

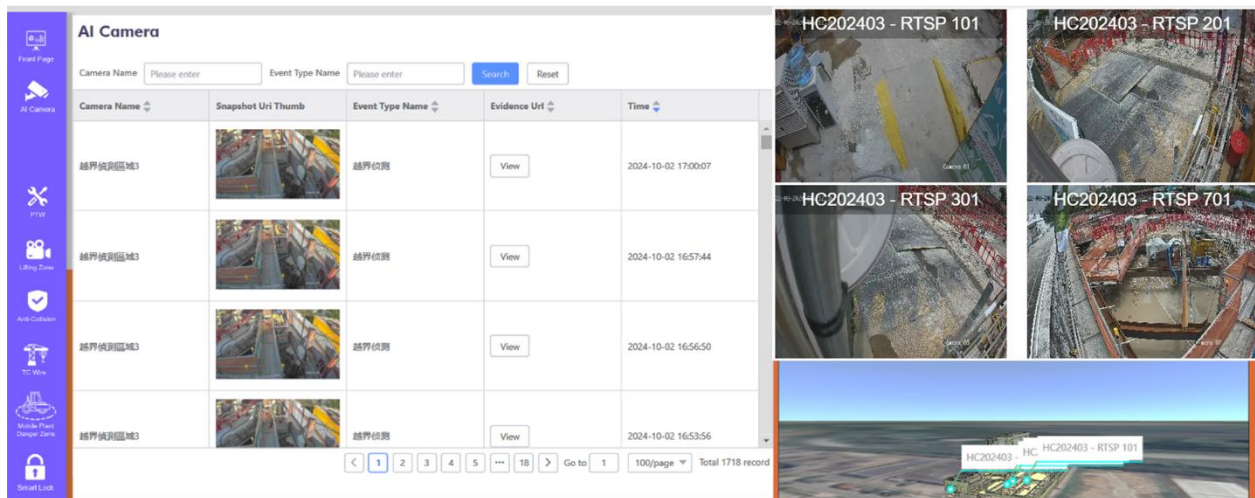
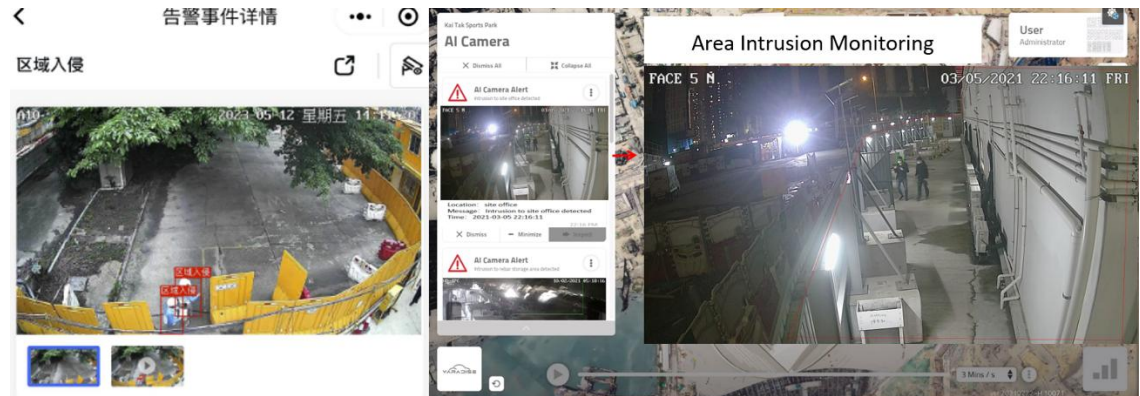


Figure 14 – Dashboard Example of AI Camera Monitoring System

The AI safety monitoring system is recommended as a site-wide visual intelligence layer for detecting unsafe acts and dangerous situations that may not be consistently captured by manual supervision alone. By deploying AI-enabled cameras and associated processors, the site can detect unsafe scenarios in real time, trigger immediate local warnings, and generate video-based records for analysis, enforcement and continuous improvement.

A. Recommended Hardware & Software



Figures 15 & 16 – Example of AI detection of Area Intrusion

It is recommended that the system comprise:

- AI-enabled IP cameras with weatherproof protective casings;
- edge or server-based AI processors for real-time detection;
- Digital Video Recorder (DVR) / Network Video Recorder (NVR) storage for event recording;
- local sound / light alarm devices for immediate warning;
- dashboard software with live video display, event logs and analytics;
- API integration to the CMP and other 4S modules.

For larger projects, it is recommended that the system include a mix of:

- fixed overview cameras for static high-risk zones;
- Pan-Tilt-Zoom (PTZ) / high-resolution cameras for flexible supervision;

- dedicated cameras for mobile plant routes, loading bays, lifting zones, scaffold fronts, and access-controlled areas.

B. Recommended Connection Requirements

To support dependable and timely warnings, the following are recommended:

- **Local Power over Ethernet (PoE) / Local Area Network (LAN) backbone:** for camera connectivity and stable video transmission.
- **4G/5G or site Wi-Fi backhaul:** for livestreaming alerts to CMP and remote supervisors.
- **Local alert autonomy:** the sound / light alarm should function even if internet connectivity is interrupted.
- **Cybersecurity controls:** encrypted image / video transmission, authenticated user access, and role-based review of recorded footage.
- **Periodic tuning / retraining arrangement:** the supplier is recommended to provide an AI improvement plan and periodic accuracy review as site conditions change.

C. Recommended Signal Parameters

The following parameters are recommended for capture and retention:

1. Camera / Device Data

- Project ID
- Camera ID
- Camera location / coverage zone
- AI model / module type
- Device health status

2. Detection Data

- Unsafe scenario classification
- AI confidence level
- Time and date of detection
- Zone ID / geofence ID
- Duration of unsafe act
- Number of persons / plants involved

3. Evidence Data

- Auto-captured image
- Video clip of the event
- Event ID / case number
- Linked screenshot or annotation

4. Response Data

- Local alarm trigger time
- Notification dispatch time
- Acknowledgement time
- Response completion time
- Close-out remarks / rectification status

5. Analysis Data

- Repeated unsafe-act frequency by zone / trade / contractor
- False-positive review record
- Monthly trend analysis for safety meetings

These data categories support the detection and classification of unsafe scenarios, configuration or restricted, danger and lifting zones, and transmission of live video, alerts and response records to the CMP.

D. Recommended Alert & Action Tiers

Alert Tier	Function	Recommended Trigger Example	Recommended Notification & Follow-up
3rd Tier (Alert)	Reminder/ Notification	Missing PPE, worker entering a caution perimeter, housekeeping obstruction, or early	Local reminder alert where appropriate; notification; CMP supervisor

		driver distraction indicator.	coaching and toolbox talk record if repeated.
2nd Tier (Alarm)	Warning	Worker near moving plant, overspeeding site vehicle, unauthorized access to restricted zone, or unsafe lifting geometry.	Local siren / beacon; app / SMS alert to Safety Officer and site supervisors; immediate check by responsible person.
1st Tier (Action)	Emergency Response	Worker beneath suspended load, imminent collision between worker and plant, or intrusion into a fatal zone.	Critical alarm; operator to halt plant / lifting movement if feasible; CMP critical notification; mandatory physical intervention by Site Agent / Safety Officer; case closure only after rectification and record review.

3.9 Item 9 – Confined Space Monitoring System



Figure 17 & 18 – Full Set of Equipment (Left) & Gas Detector (Right)



Figure 19 – CMP Dashboard Example of Gas Detector Application Interface

The Confined Space Monitoring System is recommended to enhance statutory compliance and prevent asphyxiation, toxic exposure, fire, explosion, and heat stress incidents through continuous environmental and personnel monitoring.

This system shall comply with:

- **Factories and Industrial Undertakings (Confined Spaces) Regulation (Cap. 59AE)**
 - Relevant Labour Department Code of Practice; and
 - Refer to DEVB TC(W) No. 3/2023 Annex A Clause 5(12)(h)⁴ when applicable
- A. Recommended Hardware & Software**
A comprehensive confined space ecosystem is recommended.

⁴ DEVB TC(W) is intended for capital works contracts and should not be regarded as a regulatory requirement. Nevertheless, project planners are recommended to follow the relevant provisions when applicable.

1. Environmental Monitoring Sensors

Fixed or portable multi-gas detectors capable of real-time monitoring:

- Oxygen (O₂)
- Carbon Monoxide (CO)
- Carbon Dioxide (CO₂)
- Hydrogen Sulfide (H₂S)
- Methane (CH₄)
- Combustible Gas (%LEL)
- Temperature
- PM2.5 (Optional but recommended)

Sensors should:

- Be intrinsically safe (ATEX/IECEX certified)
- Support continuous monitoring
- Auto-calibration reminder

2. Worker Monitoring

If Smart Wearables are deployed:

- Indoor positioning (UWB / BLE)
- Real-time worker counting
- Standstill detection
- Emergency SOS button

3. Access Control Integration

- E-lock system at confined space entry
- Digital Permit-to-work linkage
 - Valid permit active
 - Gas reading within safe range

4. Control Platform

- Integrated into CMP (preferred)
- Real-time dashboard:
 - Gas trends
 - Worker headcount
 - Entry/exit log
 - Alarm history

B. Recommended Connection Requirements

1. In-Space Communication

- LoRa / UWB for underground/deep penetration
- Signal repeater if required
- Wired backup if feasible

2. External Transmission

- 4G/5G uplink to CMP
- Redundant path recommended for high-risk works

3. Local Alarm Autonomy

Gas alarm must:

- Trigger local audible alarm (≥ 100 dB)
- Flashing red beacon
- Function even if CMP connectivity fails

C. Recommended Signal Parameters

1. Environmental Data

- O₂ concentration (%)
- CO (ppm)
- CO₂ (ppm)
- H₂S (ppm)
- CH₄ (%LEL)
- Combustible Gas (%LEL)
- Temperature (°C)
- PM_{2.5} ($\mu\text{g}/\text{m}^3$)

2. Worker Data

- Worker ID
- Entry Time
- Exit Time
- Duration inside
- Current location
- Standstill duration
- SOS activation

3. Permit Data Integration

- Permit ID
- Competent Person name
- Rescue team standby confirmation
- Ventilation status
- Gas test certificate upload

4. Response Metrics

- Alarm trigger time
- Evacuation start time
- Last worker exit time
- Supervisor acknowledgement time

D. Recommended Alert & Action Tiers

Alert Tier	Function	Recommended Trigger Example	Recommended Notification & Follow-up
3rd Tier (Alert)	Early Warning	O ₂ drops below 19.8% but above statutory threshold	CMP alert; Supervisor to inspect ventilation
2nd Tier (Alarm)	Unsafe Atmosphere	O ₂ < 19.5% OR Gas exceeds preset safe level	100 dB siren; Flashing beacon; CMP alert; Immediate suspension of work
1st Tier (Action)	Life-Threatening	Explosive gas > LEL threshold OR worker standstill > preset time OR SOS activated	Immediate evacuation; Rescue team activation; CMP critical alert to Safety Officer & Site Agent; Emergency protocol initiated

3.10 Item 10 – Safety Training with Virtual Reality Technology



Figure 20 – Safety Training using VR tools

Safety training with Virtual Reality (VR) technology is recommended as an immersive training measure to strengthen hazard recognition, memory retention and behavioral compliance for workers engaged in high-risk activities. Compared with traditional briefing-only arrangements, VR allows workers to experience lifelike accident scenarios in a controlled environment and therefore supports more practical and memorable learning.

A. Recommended Hardware & Software

It is recommended that the VR training system include:

- standalone VR headsets or headset-plus-PC arrangements;
- trainer console / management software;
- scenario-based VR training content in Chinese and English, with optional trade-specific language support;
- large display screen for group briefing and post-scenario debriefing;
- training record module integrated with QR code or staff ID check-in;
- content management workflow for approval by the project team.

The VR training should cover workers engaged in high-risk activities such as:

- heavy lifting operation;
- heavy machinery operation;
- working in confined spaces;
- use of suspended working platform;
- erection / alteration / dismantling of bamboo scaffolds; and
- electrical and related hazardous works.

B. Recommended Connection Requirements

The following arrangement is recommended:

- Training room LAN / Wi-Fi: for headset management, content download and attendance synchronization.
- Offline playback capability: to allow training continuity even if internet service is unstable.
- CMP / LMS synchronization: for uploading completion records, quiz outcomes and refresher due dates.
- Secure content repository: for approved versions of VR modules and toolbox-talk materials.
- Device hygiene / maintenance protocol: including charging, sanitization and headset inspection between sessions.

This supports the Development Bureau requirement for proper hardware / software provision and site record retention, while also fitting how previous Hong Kong projects have linked training records to broader digital site systems.

C. Recommended Signal Parameters

The following parameters are recommended:

1. Trainee Data

- Project ID
- Worker ID
- Worker name
- Trade / role
- Employer / subcontractor
- Language used

2. Training Session Data

- VR module title
- Risk category
- Session date and time
- Training location
- Trainer / facilitator ID
- Device ID used

3. Performance Data

- Completion status
- Session duration
- Quiz / assessment score
- Hazard-recognition result
- Number of incorrect actions / misses in simulation
- Need for retraining (Yes / No)

4. Compliance Data

- Validity period / refresher due date
- Linkage to permit-to-work eligibility
- Attendance record
- Toolbox talk follow-up status

5. Incident / Welfare Data

- Motion sickness / discomfort report
- Session interruption record
- Supervisor remarks

These parameters align with the Development Bureau requirement to keep site records of VR safety training, and they also reflect how local examples have linked training completion with QR-based record systems and worker digital profiles.

D. Recommended Alert & Action Tiers

- **3rd Tier (Alert) – Training Reminder**

Example trigger: worker's refresher training due within 30 days, or new worker assigned to a high-risk activity but not yet scheduled.

Recommended notification & follow-up: CMP / app reminder to Safety Officer, subcontractor supervisor and worker.

- **2nd Tier (Alarm) – Compliance Gap**

Example trigger: worker scheduled for high-risk work has not completed the relevant VR module, or failed to meet the minimum assessment threshold.

Recommended notification & follow-up: escalation to Safety Officer; worker to attend retraining before assignment to the relevant high-risk activity.

- **1st Tier (Action) – Work Restriction**

Example trigger: no valid VR training record for a worker about to undertake a covered high-risk activity.

Recommended notification & follow-up: do not activate the related work permit / assignment until the worker completes the required VR training and the record is uploaded to the system. A closure record is recommended for audit purposes.

4 Promoting the Adoption of Disruptive Technologies in Construction

The industry is at an inflection point where three disruptive technologies — AI and Large Language Models (LLMs), Robotic Inspection Systems, and Unmanned Aerial Vehicles (UAVs) — can fundamentally transform how construction site safety is managed, shifting the paradigm from reactive incident response to proactive, predictive risk prevention.

This guidebook draws on recent Hong Kong experience with AI safety systems, robotics and drones, as well as current policy directions (including the Smart Site Safety System (4S), DEVB technical circulars on digital works supervision, and the Construction Innovation and Technology Fund (CITF)) to provide practical recommendations on adopting these technologies through an iterative, co-development approach. It is intended as a concise guidance note for clients, project managers, contractors and technology partners on Hong Kong projects.

4.1 Overarching Adoption Strategy: An Iterative Approach to Disruptive Technology

Adopting disruptive technologies in a safety-critical environment requires a deliberate, iterative methodology rather than a single large-scale deployment. A staged approach allows organizations to validate technology effectiveness under real site conditions, build user confidence, and refine solutions before scaling.

Recommended Iterative Adoption Framework (IDEAS)

1. Identify

Identify specific safety pain points and high-risk scenarios where each technology can deliver the greatest impact (e.g. working at height, tunnel inspections, heavy lifting, night works). Engage technology partners early through workshops to understand solution capabilities, constraints and integration requirements.

2. Deploy

Deploy the technology in a controlled scope — a single work zone, one tunnel section, a defined activity type or time window — with clear success criteria and measurable KPIs (e.g. detection accuracy $\geq 90\%$, false alarm rate $< 5\%$, inspection time or exposure hours reduction, reduction in near misses).

3. Evaluate

Conduct structured post-pilot reviews with all stakeholders, analyzing KPI outcomes, user feedback, false positive/negative rates, integration stability and any safety incidents or near misses. Compare with baseline manual processes.

4. Adjust

Work with the technology partner in a co-development mode to re-train AI models with site-specific data, tune detection thresholds, optimize robotic patrol routes, recalibrate drone flight plans and improve user interfaces. Iterate in short agile cycles.

5. Scale

Once refined solutions meet acceptance criteria, progressively expand deployment across additional zones, shifts and project phases. Embed lessons learned into project safety management plans and standard operating procedures.

This **IDEAS** cycle (Identify → Deploy → Evaluate → Adjust → Scale) should repeat continuously as works stages change and new technologies emerge.

4.2 AI and LLM for Construction Safety Applications

Objective and Safety Enhancement

The integration of AI — including computer vision, Large Language Models (LLMs) and Retrieval Augmented Generation (RAG) — into construction safety management can:

- Continuously monitor site activities via CCTV and detect unsafe acts in near real-time.
- Provide safety professionals with instant, cited access to safety regulations, codes of practice and project-specific documents.
- Support dynamic, context-aware risk assessments that evolve with changing site conditions.
- Automate and standardize safety audits and documentation.

The core safety enhancement lies in shifting from periodic, paper-based inspections to **continuous, AI-LLM augmented monitoring and knowledge-driven decision support**. AI video analytics leveraging advanced Vision Model, integrated with smart site safety systems, can detect unsafe acts whilst reducing the AI training effort. LLM-RAG systems give safety officers an “always-on” assistant that can explain applicable regulations, generate checklists and highlight gaps in method statements or risk assessments with traceable citations.

4.2.1 AI video analytics (CCTV / 4S integration) — with vision-capable LLM

A. Recommended Hardware & Software

- **CCTV and 4S Platform Integration**
Connect existing CCTV networks to the 4S safety management platform, enabling real-time video feed ingestion or event-triggered clip capture for AI analysis.
- **Vision-Capable LLM (VLM)**
Use a multimodal Vision Language Model capable of complex scene understanding, trained or fine-tuned for construction safety contexts (e.g., identifying “worker leaning over unprotected edge while lifting materials”).
- **Two-layer AI Architecture**
 1. Edge/on-prem CV Layer: Fast, lightweight computer vision models for first-pass detection (PPE compliance, proximity breaches, zone intrusion).

2. Cloud/VLM Layer: Secondary validation by a vision-capable LLM for high-risk or ambiguous cases, providing contextual interpretation and reducing false positives.

- **RAG Grounding Module:**
Connect the system to a retriever that references Hong Kong safety regulations, code clauses, and project-specific method statements to support traceable and regulation-cited outputs.
- **Data Governance Tools:**
Implement masking, redaction, and audit-logging solutions with role-based access to video data and inference records for privacy and compliance.

B. Recommended Connection Requirements

- **Upstream Bandwidth**
Minimum 10–20 Mbps per camera for HD streaming to support low-latency video transfer to the AI inference engine.
- **Network Latency**
Target under 250 ms end-to-end (from video capture to analytics output) for near real-time feedback.
- **Edge–Cloud Synchronization**
Use reliable HTTPS or MQTT-secured links for bi-directional data exchange between edge CV devices and central 4S/VLM systems.
- **Redundancy**
Ensure fallback buffering and offline queueing at the edge node to prevent data loss during temporary connectivity drops.

C. Recommended Signal Parameters

- **Frame Rate**
10–20 FPS optimized for motion clarity while preserving bandwidth efficiency.
- **Resolution**
Minimum Full HD (1080p) to ensure sufficient detail for object detection and activity recognition.
- **Event Sampling**
Allow configurable event-triggering (motion, sound, rule violation) to send key frames/clips to the VLM for analysis rather than continuous feed processing.
- **Metadata Tagging**

Include metadata such as camera ID, timestamp, geolocation, and zone classification with every analytic packet for traceability.

D. Recommended Alert and Action Triggers

Alert / Features	Function	Recommended Trigger Example	Recommended Notification & Follow-up
Structured “Safety Card” Output	Standardized Recording	Each VLM alert triggers creation of a structured record with hazard category, short description, confidence level, visual evidence (camera ID, timestamp, bounding boxes/key frames), recommended immediate action, and escalation tier.	- Store safety cards in CMP; display key fields on alert pop-ups; allow export to incident reports and analytics dashboards.
Human-in-the-Loop Policy	Governance	System operates in “assist-not-autostop” mode where alerts inform and recommend, but only authorized safety officers can enforce stop-work, raise nonconformance records, or initiate disciplinary actions.	- Route alerts to designated safety officers for acknowledgement and decision; log human decisions alongside the original AI recommendation.
Scenario Coverage	Detection Scope	Core detection scenarios configured for missing PPE, unsafe work-at-height, suspended loads, unsafe access routes, plant proximity zones, poor housekeeping, barricade/signage anomalies, and scaffold defects.	- Show enabled scenarios per camera/zone in CMP; notify safety team when new scenarios are added or disabled.
Performance Targets & Tuning	Quality Management	For each scenario, define target accuracy and acceptable false alarm rate, with weekly tuning	- Generate periodic performance reports; alert system owners

		during pilot and monthly retraining after go-live.	when metrics fall below thresholds and schedule tuning or retraining sessions.
Continuous Improvement Feedback Loop	Model Refinement	Maintain a labeled “site library” of verified images and clips linked to confirmed hazards and outcomes.	- Use the library for ongoing model retraining, prompt adjustments, and retrieval tuning; allow safety officers to contribute new labeled examples after incident reviews.

4.2.2 LLM RAG for hazard identification, safety audits and dynamic risk assessment

A. Recommended Hardware & Software

- **LLM–RAG Engine**

Deploy a domain-specific Large Language Model configured with a Retrieval-Augmented Generation (RAG) framework, grounded in authoritative Hong Kong safety documentation.

- **Knowledge Sources**

Index and embed reference materials including:

- Hong Kong safety regulations and Codes of Practice.
- DEVB, LD, and CIC guidelines.
- Project-specific safety plans, method statements, and risk assessments.

- **Vision-Language Extension (VLM)**

Integrate with a vision-capable model to process site photos or CCTV captures for automated non-compliance identification (e.g., missing guardrails, poor housekeeping).

- **Integration Platform:**

Connect the LLM-RAG module to the enterprise 4S (Safety, Security, Surveillance, Sustainability) system or equivalent safety management platform for query logging, traceability, and audit integration.

B. Recommended Connection Requirements

- **Data Access Layer**

Establish secure API-level connectivity between the LLM-RAG application and document repositories (SharePoint, DMS, or CDE).

- **Response Latency**
 Target sub-2 second retrieval times for most standard safety queries; under 5 seconds for vision-enhanced requests.
- **Network Security**
 All data exchanges should use encrypted channels (HTTPS/SSL or TLS 1.3), and on-prem deployments must remain within the corporate safety data zone for compliance.

C. Recommended Signal and Data Parameters

- **Document Indexing Frequency**
 Schedule daily or on-demand updates to include new safety documents or revised method statements.
- **Metadata Annotation**
 Append source references (document title, clause, paragraph number, revision date) to each retrieved citation.
- **Data Sources**
 Incorporate both structured (permit database, risk matrix) and unstructured (PDF, Word, image) safety materials.
- **Vision Data Inputs**
 Accept images in standard formats (JPEG, PNG) or video frame extracts not exceeding 5 MB per upload for VLM interpretation.

D. Recommended Alert/Features and Action Triggers

Alert / Features	Function	Recommended Trigger Example	Recommended Notification & Follow-up
Responses	Traceability	Every AI response must include citations linking back to the underlying codes, guidelines, or project	- Display citations within the CMP / AI UI; allow users to drill down to source documents; notify document owners when uncited

		documents used by the RAG pipeline.	content is detected.
Dynamic Risk Scoring	Risk Assessment	Automatic risk level updates using real-time site factors such as weather, workforce density, current task types, and recent incident records.	- Push updated risk scores to CMP dashboard; send instant messages to Safety Officer and Supervisor when thresholds are exceeded; log all changes for audit.
Audit Checklist Generation	Planning & Assurance	On creation of a new work package or change in daily task plan, auto-generate task-specific or daily safety audit templates.	- Present checklists in CMP; allow export to mobile inspection tools; send notification to responsible supervisor to review and confirm coverage.
Hazard Identification Querying	Hazard Intelligence	User submits a natural-language question (for example, “What hazards are associated with lifting near live traffic?”) through the AI interface.	- Return a cited list of hazards and control measures; allow exporting recommended controls into JSA / permit templates; log queries to build a searchable hazard knowledge base.

E. The recommended human resource requirements for both of the above applications are as follows:

- **LLM–RAG Administrator**
 Oversees model tuning, document ingestion, and retrieval index management.
- **Safety Knowledge Curator**
 Maintains source material quality—ensuring regulations, corporate guidance, and method statements are current and accurately referenced.

- **AI System Engineer**
Handles API integration, permission management, and latency tuning for retrieval components.
- **Safety Officers / Auditors**
Use the system for real-time hazard queries, compliance checks, and audit preparation, validating AI outputs with professional judgment.
- **Data Protection Officer**
Ensures personal or sensitive information within documents and images is appropriately sanitized and compliant with PDPO.

4.3 Robotic Inspection for Hazardous and Inaccessible Areas

Objective and Safety Enhancement

Robotic inspection systems address the high risk associated with human access to:

- Confined spaces (tunnels, shafts, culverts, tanks).
- Elevated structures and temporary works.
- Trackside and traffic adjacent areas.
- Locations with poor air quality or limited access/egress.

A. Recommended Hardware & Software

- **Robotic Platforms**
 - **Unmanned Ground Vehicles (UGVs):**
For tunnel inspections, flat surfaces, and confined spaces.
 - **Crawler Robots**
For vertical surfaces, ceilings, or pipeline inspections.
 - **Hybrid Air–Ground Systems**
For environments requiring both ground and elevated inspections.
- **Sensor and Imaging Suite**
 - High-resolution cameras (minimum 4K) with adaptive lighting for detailed visual assessment.
 - Environmental sensors as applicable (gas detection, temperature, humidity, vibration).
- **Protection and Durability**
Equipment must meet environmental resistance standards (minimum IP66, higher for corrosive or high-moisture conditions).
- **Software Integration**
 - Connect telemetry and imagery data streams to centralized project platforms (e.g., 4S, BIM, or digital twin dashboards).
 - Enable AI-assisted defect analytics for cracks, water seepage, spalling, corrosion, and deformation detection.
 - Utilize cloud or on-prem storage with structured data indexing for future review and audit.

B. Recommended Connection Requirements

- **Data Transmission**

Use secured wireless or wired communication (Wi-Fi 6 / 5G / Ethernet) for real-time telemetry and video feeds.

- **Bandwidth**
Minimum 20–50 Mbps per active robot feed for continuous HD video and sensor data.
- **Latency**
Maintain under 250 ms for responsive live control and monitoring.
- **Integration Protocols**
Ensure compatibility with standard APIs and streaming formats (RTSP, MQTT, or gRPC).
- **Redundancy**
Include edge caching on the robot’s onboard computer to store data during network interruptions.

C. Recommended Signal and Control Parameters

- **Camera Resolution**
Minimum 4K for inspection-class imaging; dynamic range and infrared support where low-light conditions are present.
- **Telemetry Update Frequency**
At least 1 Hz for standard environmental sensors, higher for vibration or motion monitoring.
- **Robot Navigation**
Define digital routes or patrol paths using geofencing, SLAM, or QR-based localization.
- **Exclusion Zones**
Embed geofenced safety perimeters to prevent robots from entering restricted or occupied work areas.

D. Recommended Alert/Features and Action Triggers

Alert / Features	Function	Recommended Trigger Example	Recommended Notification & Follow-up
AI-Assisted Anomaly Detection	Monitoring	Automatic flagging of abnormal conditions such as visual defects, environmental hazards (for example gas levels above threshold), or irregular movements.	- Display anomaly alerts in CMP; send instant message to responsible engineer and Safety Officer; log anomalies for follow-up inspection.
Inspection Schedule	Planning	Configured patrol frequencies (for example hourly, daily, weekly) for cameras, robots, or sensors, including non-productive hours.	- Generate inspection tasks in CMP; notify assigned inspectors when patrols are due or missed; keep a timestamped record of completed rounds.
Reporting	Documentation	Completion of each inspection or anomaly review, requiring an auto-generated log with time, location, defect type, and associated imagery.	- Store reports centrally; route to engineers and safety personnel for sign-off; provide export to PDF or BI dashboards for management review.
Integration with AI Safety Systems	System Orchestration	When an anomaly is detected, forward relevant data into LLM-RAG or VLM modules for rule-based interpretation and contextual risk assessment.	- Append AI-generated interpretation and recommended actions to the anomaly record; notify safety team if recommended escalation tier exceeds threshold.

E. Recommended Human Resource Requirements

- **Robot Operators**

Trained personnel responsible for mission setup, route planning, and on-site deployment.

- **Inspection Data Analysts**
Review collected imagery and AI outputs, validate findings, and prepare defect reports.
- **AI System Engineer**
Maintains interface between robotic data and analytics pipelines (AI safety or inspection dashboards).
- **Maintenance Technicians**
Handle calibration, battery management, spare-part replacement, and platform servicing.
- **Safety Supervisor**
Oversees robot deployment zones, ensures compliance with human–robot interaction rules, and enforces exclusion protocols.
- **Training Coordinator**
Provides initial and refresher training to robot operators, focusing on operational safety and interpretation of inspection results.

4.4 UAVs for Safety Inspections

Objective and Safety Enhancement

UAVs (drones) provide safe, rapid access to elevated and otherwise difficult-to-reach inspection points, such as:

- Tower crane booms and masts.

- Bridge decks and pier caps.
- High-rise scaffolding and facade works.
- Tunnel portals, vent shafts and cuttings.

Key safety enhancements include:

- **Reduced need for scaffolding, MEWPs or rope access** to carry out visual inspections.
- **Higher-frequency inspections** of large or complex sites, supporting earlier detection of hazards.
- **Digital evidence** (high-resolution imagery, 3D models) for auditing, trend analysis and training.

A. Recommended Hardware & Software

- **UAV Platforms:**
 - Use industrial-grade drones suited for elevated, confined, or remote locations such as tower crane booms, bridge decks, vent shafts, and high-rise scaffolding.
 - Where required, employ thermal or LiDAR-equipped UAVs for heat mapping, deformation analysis, and precision modelling.
- **Sensor and Imaging Systems:**
 - RGB cameras capable of 4K or higher resolution.
 - Optional infrared/thermal sensors for temperature variance and electrical checks.
 - LiDAR or photogrammetry payloads for accurate 3D/4D model creation.
- **Software Stack:**
 - Flight planning and fleet management software supporting geofencing, automated route execution, and live telemetry.
 - Photogrammetry and point-cloud processing software integrated with BIM or 4S platforms.
 - AI post-processing tools for defect and hazard detection (e.g., missing edge protection, poor housekeeping, blockage of access routes).

B. Recommended Connection Requirements

- **Communication Links**
Maintain stable 2.4 GHz / 5.8 GHz radio links or LTE/5G connections for live streaming. Ensure automatic return-to-home on signal loss.
- **Data Synchronization**
Upload imagery and flight logs through secure channels (HTTPS or encrypted file transfer) to the central project server.

- **Bandwidth**
 Minimum 20–50 Mbps for real-time video and telemetry streaming; higher for 4K multi-sensor payloads.
- **Integration**
 API or webhook integration between drone data platforms and central dashboards for synchronized uploads and AI analysis.

C. Recommended Signal and Flight Parameters

- **Resolution and Frame Rate**
 Capture at least 4K imagery at 30 fps; higher rates for moving components such as cranes or lifts.
- **Flight Altitude**
 Typically 5–50 m above inspection target; comply with CAD altitude rules for specific zones.
- **Flight Frequency**
 - Routine overview flights: weekly or bi-weekly.
 - Reactive inspection flights: following typhoons, heavy rainfall, or critical lifts.
 - Tunnel/underground surveys: during possession periods or night-time closures.
- **Safety Buffer Zones**
 Establish minimum stand-off distances from personnel, structures, and public areas as per CAD/UAV code.
- **Flight Plan Definition**
 Standardize coverage, overlap, and inspection angles to maintain consistency between survey datasets

D. Recommended Alert/Features and Action Triggers

Alert / Features	Function	Recommended Trigger Example	Recommended Notification & Follow-up
Automated Processing Outputs	Survey Data Products	Completion of drone flight or upload of aerial imagery triggers automatic generation of orthophotos, 3D models, and deviation maps aligned to project grid coordinates.	- Publish outputs to CMP / BIM viewer; notify engineers and surveyors that new processed datasets are available for review.

AI-Driven Hazard Detection	Visual Analytics	Processed imagery contains anomalies such as blocked access, missing edge protection, excessive debris, water ponding, or scaffold issues identified by image analytics.	- Create hazard findings in CMP; send alerts to Safety Officer and responsible supervisor; link each finding to supporting imagery and location.
Alert Escalation	Contextual Safety Handling	Significant findings reach defined severity thresholds or involve critical zones, triggering routing to the 4S or LLM-RAG system.	- System generates contextual interpretation, cites relevant control measures, and issues a structured safety card for follow-up actions.
Regulatory Compliance Alerts	Flight Governance	Drone flight parameters (altitude, location, or time) approach or exceed CAD-regulated limits.	- Display real-time warnings to pilot; log any exceedances; notify appointed drone coordinator or safety manager for investigation and record keeping.

E. Recommended Human Resource Requirements

- Licensed UAV Pilots**
 Certified per Civil Aviation Department (CAD) guidelines, responsible for flight operations and safety compliance.
- UAV Operations Supervisor**
 Coordinates flight scheduling, data management, and integration with project monitoring systems.
- AI and Data Analysts**
 Process imagery, verify AI-detected hazards, and prepare technical inspection reports.
- Maintenance Technician**

Manages battery health, firmware updates, and spare-part logistics.

- **Safety Officer (Airspace Coordination)**
Conducts pre-flight risk assessments, defines no-fly zones, coordinates with crane and logistics teams, and ensures regulatory compliance.
- **Training Coordinator**
Provides recurrent training on drone operation, risk assessment, and data interpretation, including participation in Low-Altitude Economy Regulatory Sandbox where applicable.

4.5 Co-Development, AI Governance and Ethical Considerations

Co-development with Technology Partners

Disruptive technologies seldom fit perfectly out of the box. Local site conditions, trade practices, and Hong Kong's unique regulatory landscape mean that construction clients and contractors benefit from treating vendors as **co-development partners** rather than purely as suppliers.

Key practices include:

- Joint discovery workshops to map technology capabilities to project-specific safety pain points.
- Agile development cycles with short sprints, rapid feedback from frontline users, and frequent releases.
- Shared success metrics and pilot evaluation frameworks.
- Clear roles and responsibilities for model training, data labelling, system tuning and support.

AI Governance and Ethical AI

As AI systems increasingly influence safety-critical decisions, robust governance and ethical frameworks are essential. Hong Kong's **Ethical Artificial Intelligence Framework**, issued by the Digital Policy Office, sets out principles covering transparency, robustness, fairness, accountability and human oversight. Recent guidance on generative AI and data governance further emphasizes responsible use of LLMs in high-impact domains.

Recommended practices for construction safety applications:

- **Human-in-the-loop:** Keep qualified safety personnel in the decision loop for all critical actions. AI alerts, risk scores and recommendations should support, not replace, professional judgement.
- **Transparency and explainability:** Ensure AI outputs are accompanied by explanatory information and, for LLM-RAG systems, explicit citations to underlying regulations and documents.
- **Risk-based classification:** Apply stricter governance, validation and testing to high-risk AI use cases (e.g. automatic shutdown of plant, work stoppage recommendations) than to low-risk analytics or reporting functions.
- **Data quality and bias management:** Regularly audit datasets and models to identify and mitigate biases (e.g. under-representation of certain hazard types or work scenarios). Update training data with new incidents, near misses and emerging work methods.
- **Privacy and security:** Protect worker privacy in systems using facial recognition, biometrics or health/wearable data, complying with the Personal Data (Privacy)

Ordinance and related guidance. Implement strong cybersecurity controls for AI pipelines handling video and sensor data.

- **Three lines of defence:** Align with the government’s recommended three-layer AI governance structure — operational management, independent assurance and senior oversight or external advisory bodies

Implementation Governance and Funding

- Build a multi-disciplinary digital safety team spanning safety, engineering, IT/data, and operations, with explicit responsibility for AI/robotics/UAV adoption.
- Invest in competence development: training safety officers, engineers and supervisors to understand the capabilities and limitations of AI and robotics, and to interpret outputs correctly.

By combining an iterative adoption approach, strong co-development partnerships, and rigorous AI governance, Hong Kong construction stakeholders can safely and effectively harness AI, robotics and UAVs to materially reduce safety risk and save lives on construction sites.

5 Acknowledgements

This guidebook would not have been possible without the support, effort and collaboration of all contributors. The working group would like to express our sincere gratitude to the professionals, practitioners, industry stakeholders and members who provided valuable input, practical insights and constructive comments during the development of this guidebook. Their experience in construction safety management and project implementation has been instrumental in shaping the content and ensuring its relevance to the needs of the industry.

We sincerely appreciate their time, expertise and commitment to promoting a safer, smarter and more sustainable construction industry in Hong Kong. We would also like to extend our appreciation to the members of the Task Force Group for their dedicated efforts and active participation throughout the preparation of this guidebook. A list of the Task Force Group members is provided below in recognition of their valuable contributions.

Ir Dr Barry LEE	Chairman, Task Force of Engineering Excellence & Standardization in GBA
Ir Alice CHOW	Advisor and President of the HKIE, session 2025/2026
Ir David LAU	Chairman, Excellence and Standardization Taskforce Smart Site Safety System Sub-group
Ir Tony HO	
Ir Tony ZA	
Ir Dr Alexander ZHOU	
Ir Joe WONG	
Ir Dr Nicole YIU	
Mr. Billy WONG	Working Group Member
Mr. CK WU	
Ms. Crystal CHAN	
Mr. Jimmy HUI	
Mr. Kenneth MAN	
Mr. Stone MUI	