



香港故宮

# **Remarkable Architecture for a Remarkable Museum: the building of the Hong Kong Palace Museum**

**Dr Louis Ng**  
Director, Hong Kong Palace Museum







**LUMA Arles (Frank Gehry)**

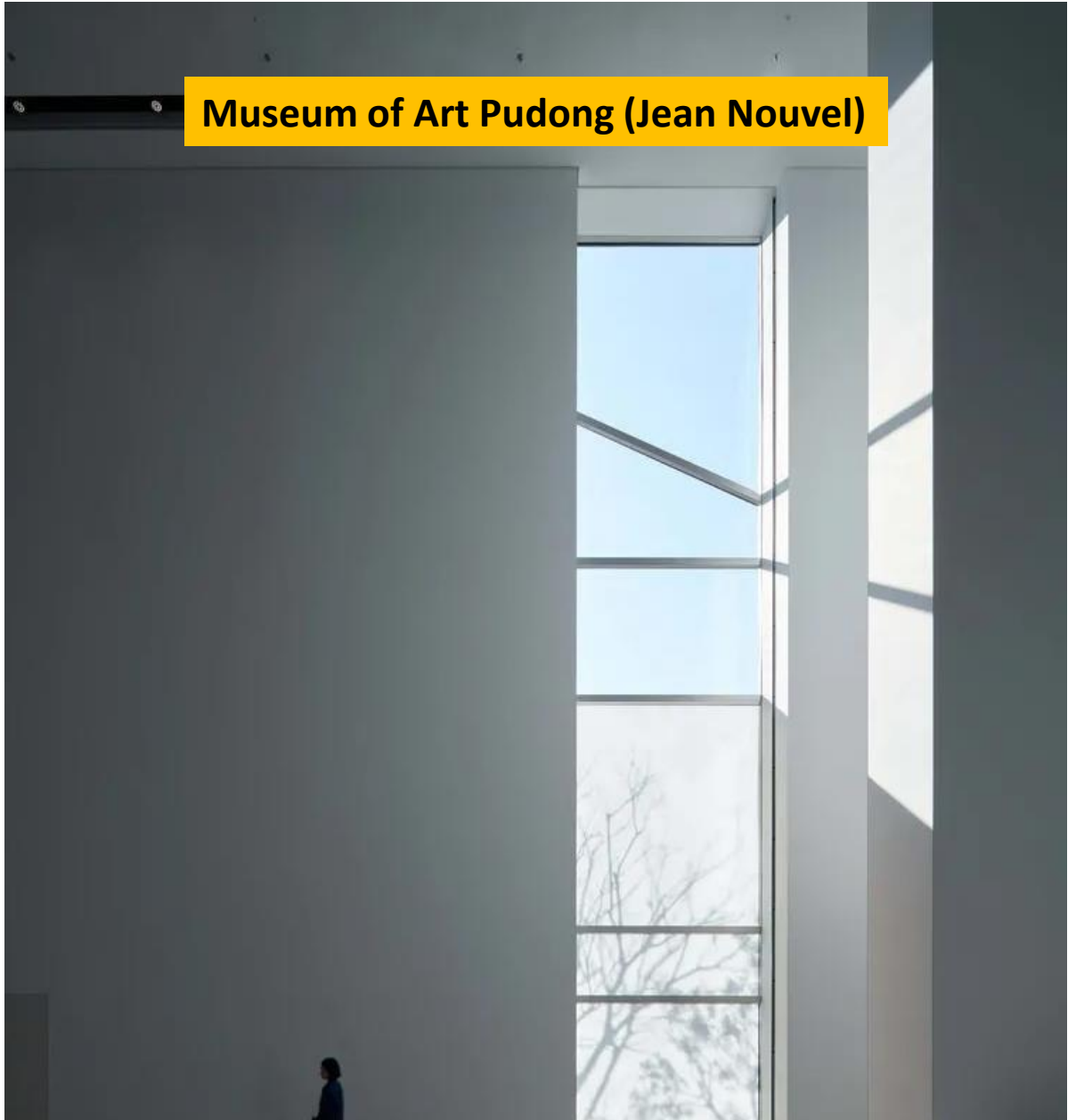


**Shanghai Astronomy Museum (Ennead)**



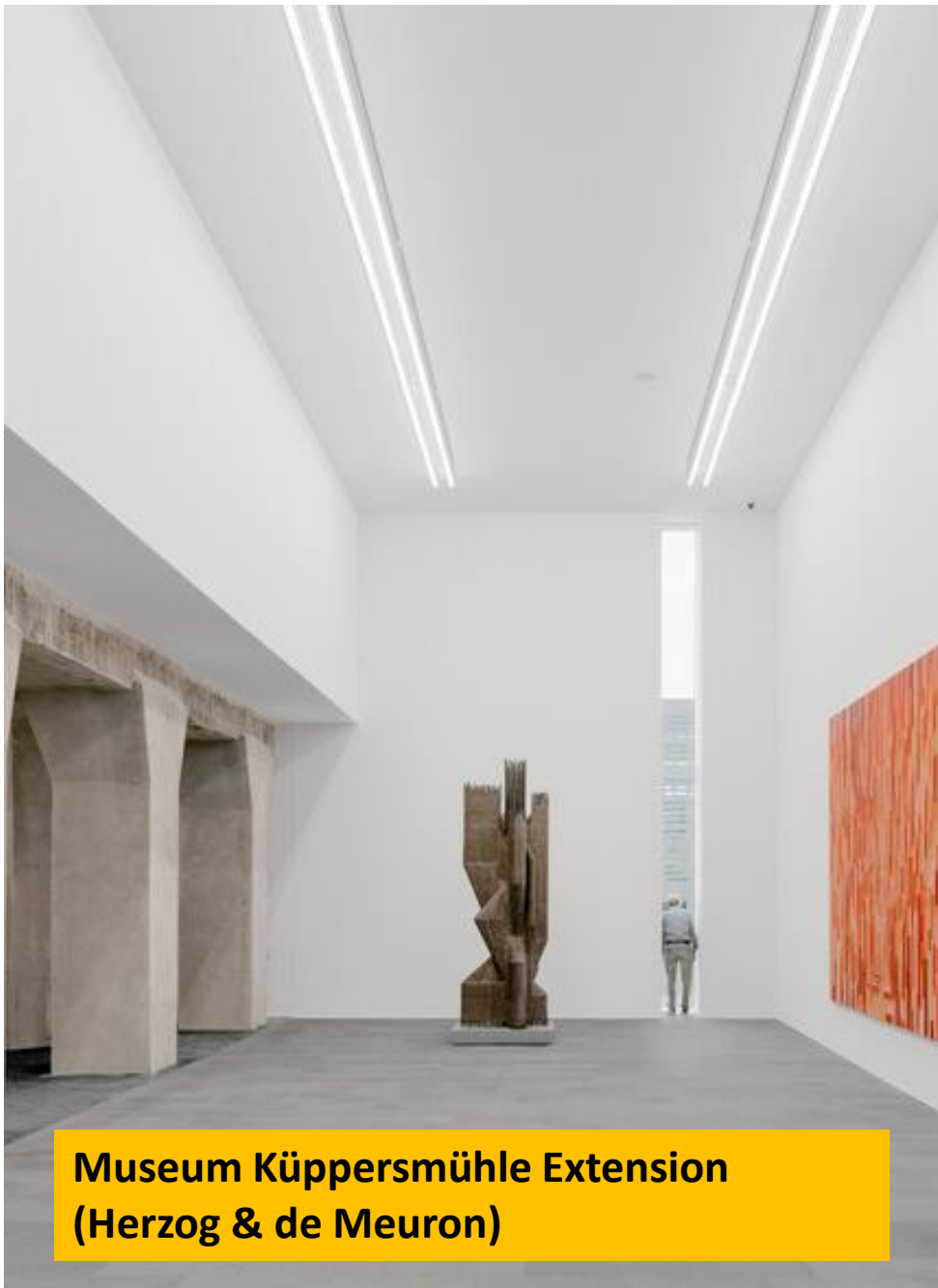


**Hauser & Wirth Menorca (Luis Laplace)**



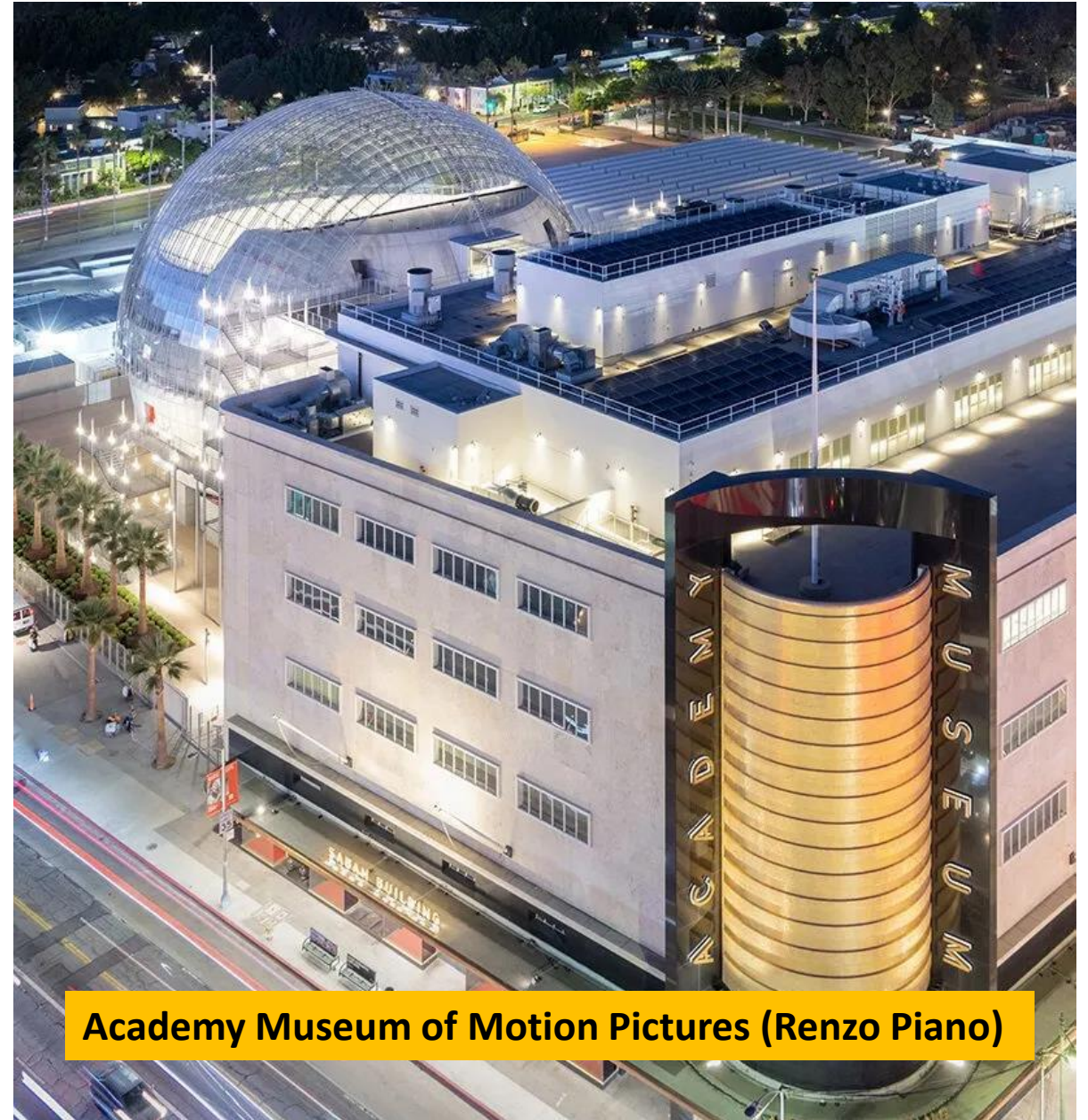
Museum of Art Pudong (Jean Nouvel)





**Museum Küppersmühle Extension  
(Herzog & de Meuron)**





**Academy Museum of Motion Pictures (Renzo Piano)**



**Depot Boijmans Van Beuningen (MVRDV)**



**M+ (Herzog & de Meuron)**



Signing Ceremony of Memorandum of Understanding of Cooperation  
Between the Palace Museum and the West Kowloon Cultural District Authority  
on Development of the Hong Kong Palace Museum



西九文化區管理局與故宮博物院  
興建香港故宮文化博物館合作協議簽署儀式

Signing Ceremony of Collaborative Agreement  
Between the West Kowloon Cultural District Authority and the Palace Museum  
on Development of the Hong Kong Palace Museum



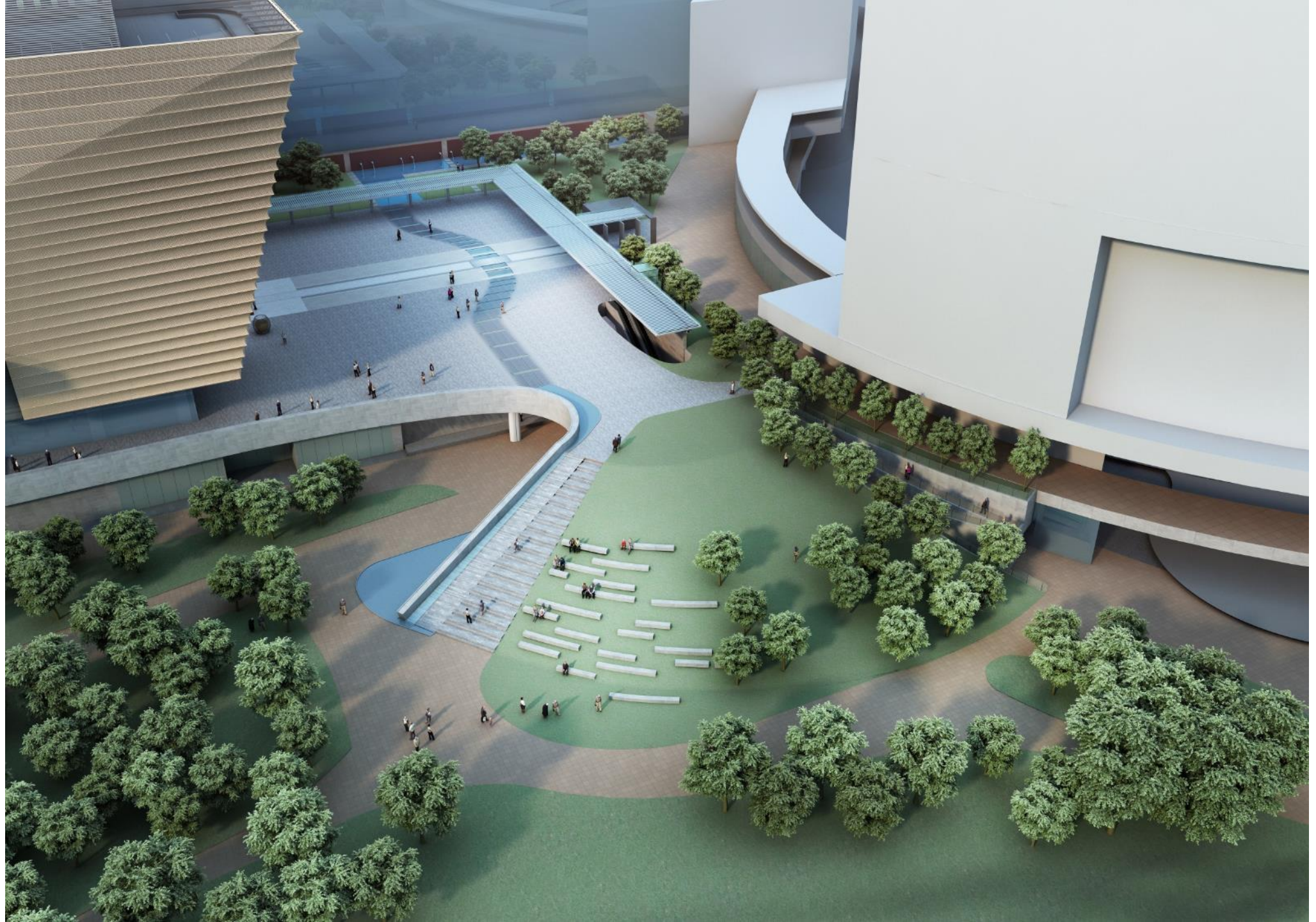












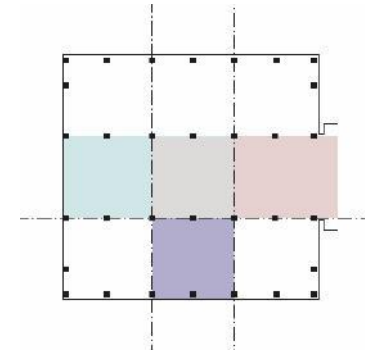
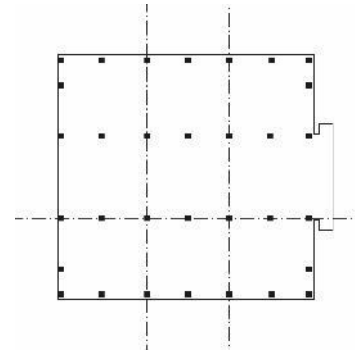
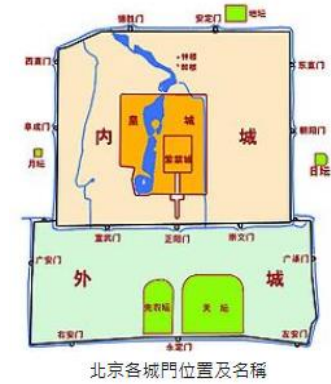
傳統空間現象 Traditional Spatial Phenomena



飄逸引人之層次 Poetry in Layering

流暢有序之排列 Fluidity in Sequence

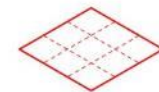
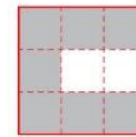
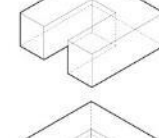
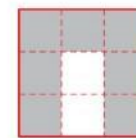
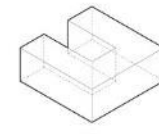
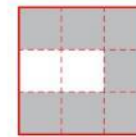
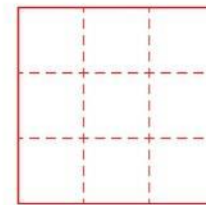
# 方位開間概念 Geomancy and Grid Concept



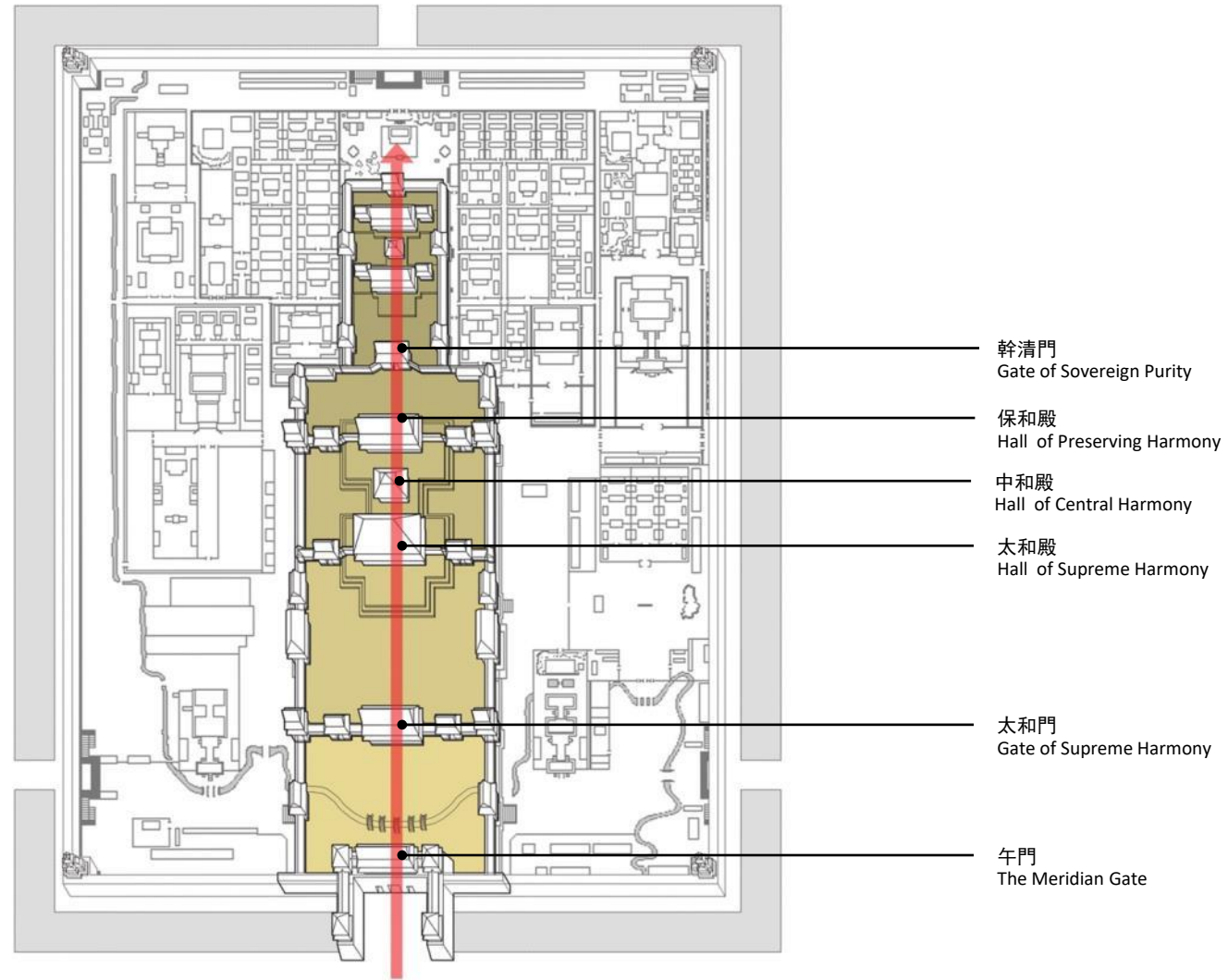
「匠人營國，方九裡，旁三門。國中九經九緯，經塗九軌，左祖右社，面朝後市，市朝一夫。」

「內有九室，九嬪居之。外有九室，九卿朝焉。九分其國，以為九分，九卿治之。」

《周禮·考工記》

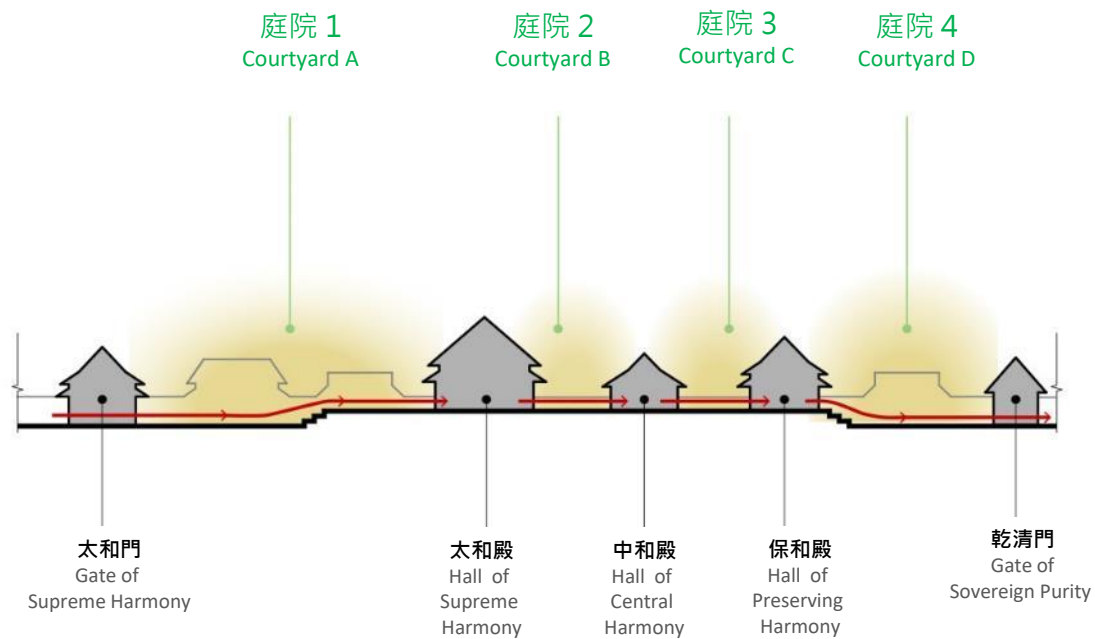


# 設計概念 Design Concept

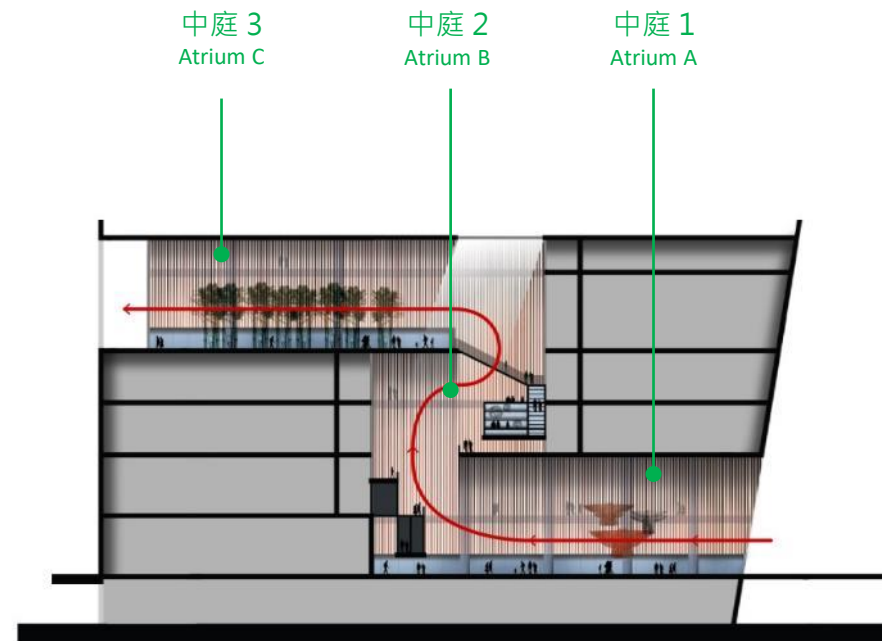


北京紫禁城中軸空間序列  
Spatial Configuration of Forbidden City

# 設計概念 Design Concept



北京紫禁城 – 中軸空間平面遞進  
Horizontal Spatial Sequence of Courtyards



香港故宮文化博物館 - 中庭空間垂直遞進  
Vertical Spatial Sequence of Atria

## 傳統視藝氣質 Traditional Visual Attributes



雍容之氣度

Majesty in Poise

寫意之平衡

Serenity in Balance

獨特之肌理色彩

Uniqueness of Colours and Textures

內斂之華麗

Subtlety in Glamour

# 傳統視藝氣質 Traditional Visual Attributes



上寬下聚

Light and Transparent Top

巧妙平衡

Delicate in Balance

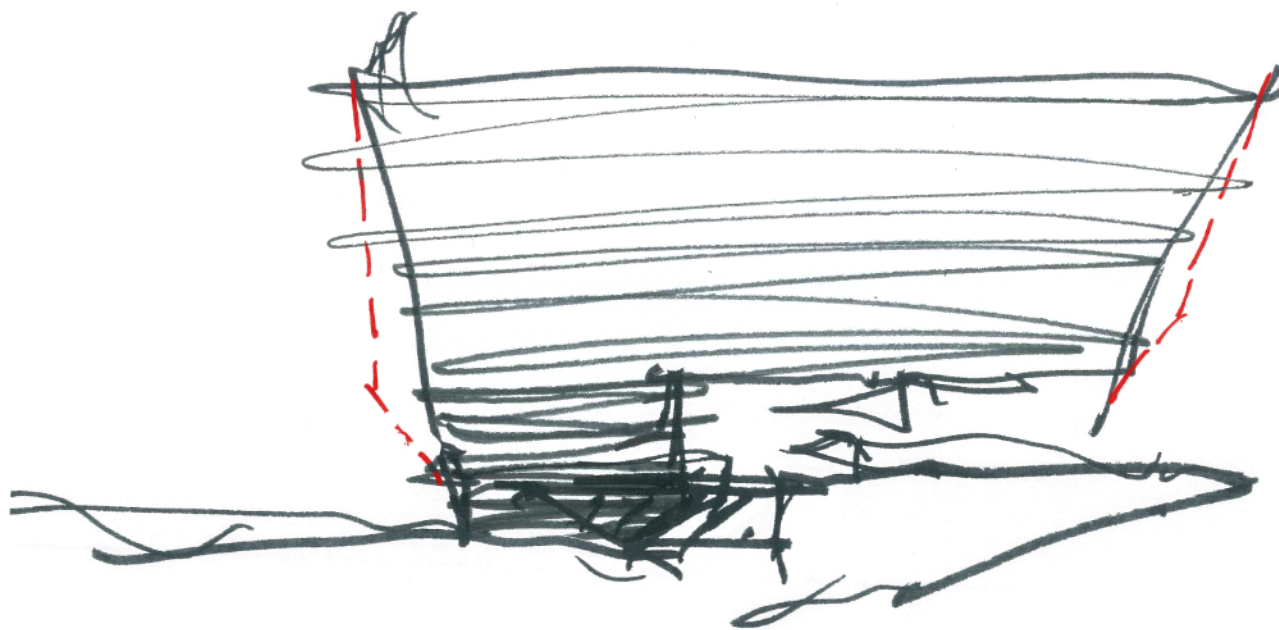
頂虛底實

Compact and Solid Base

變幻肌理

Rich in Texture

# 幕牆設計概念 Façade Concept



# 幕牆設計概念 Façade Concept



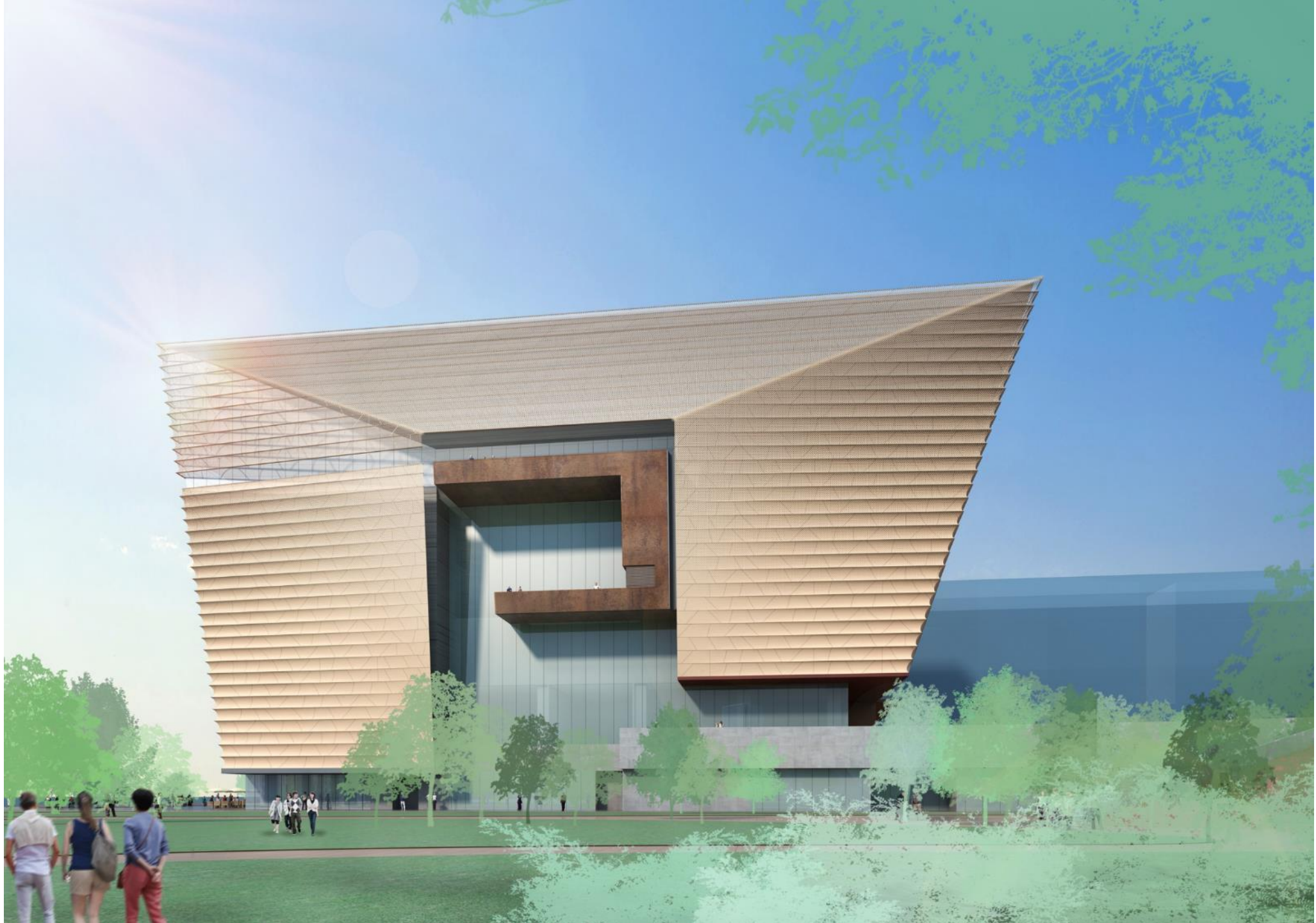
# 幕牆設計概念 Façade Concept



# 幕牆設計概念 Façade Concept

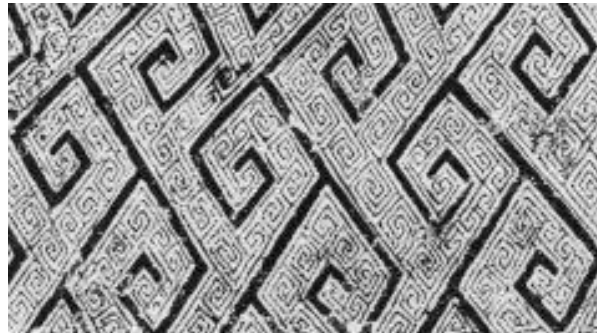
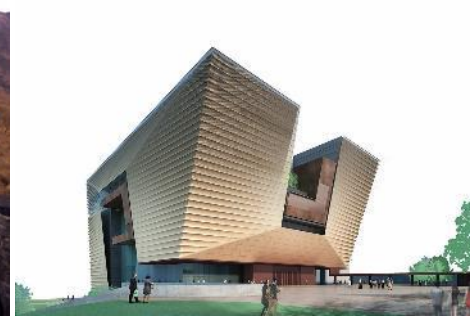




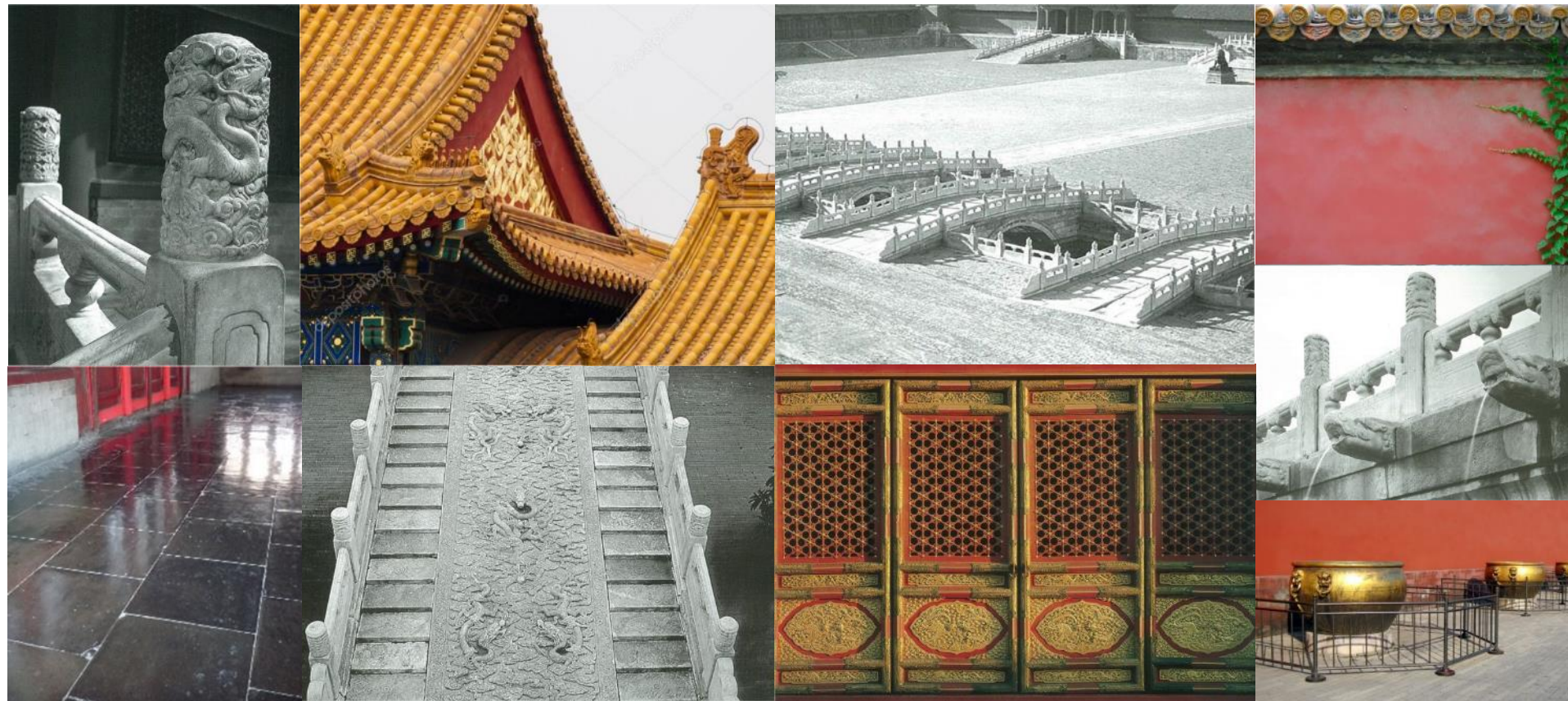




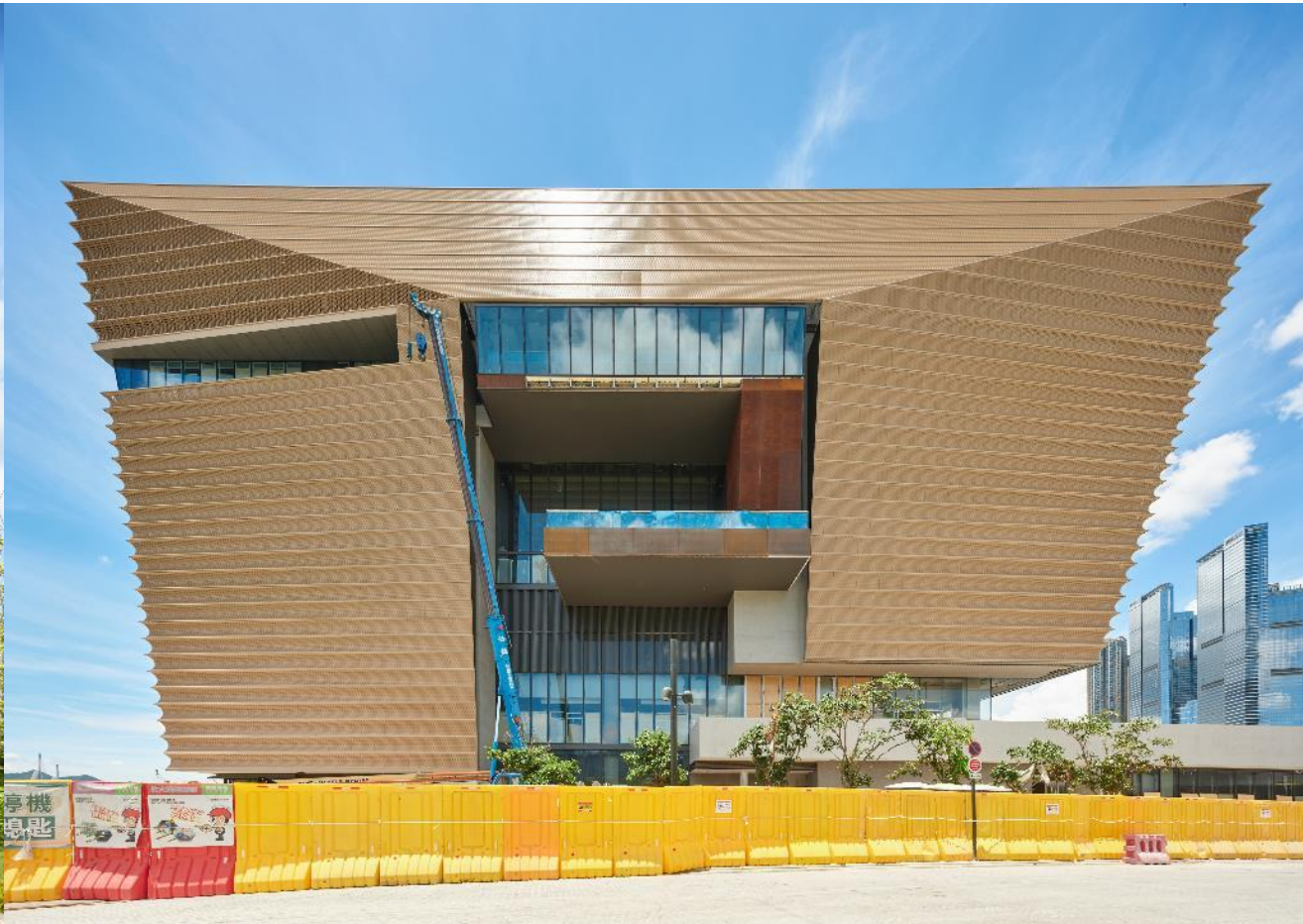
造型概念 Formal Concept



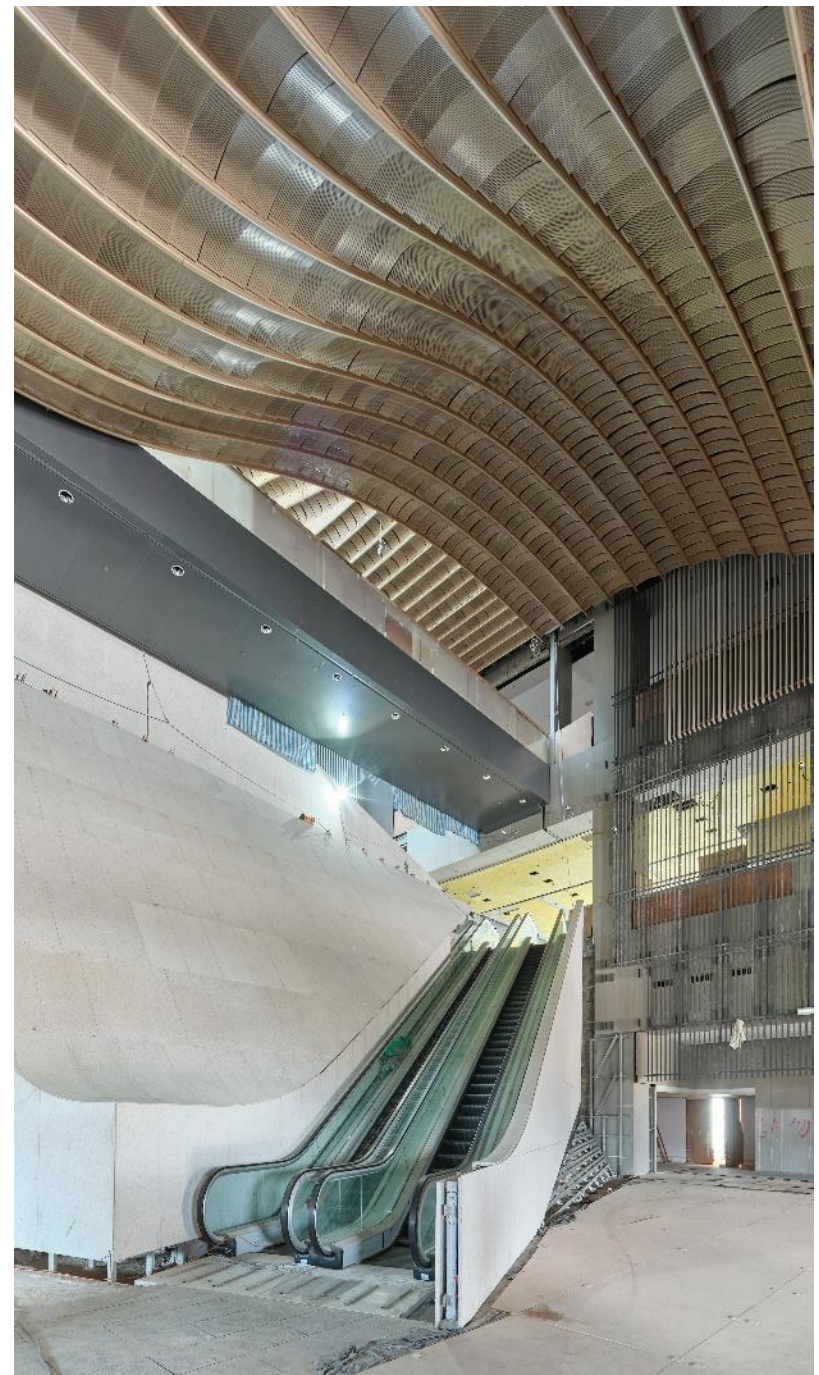
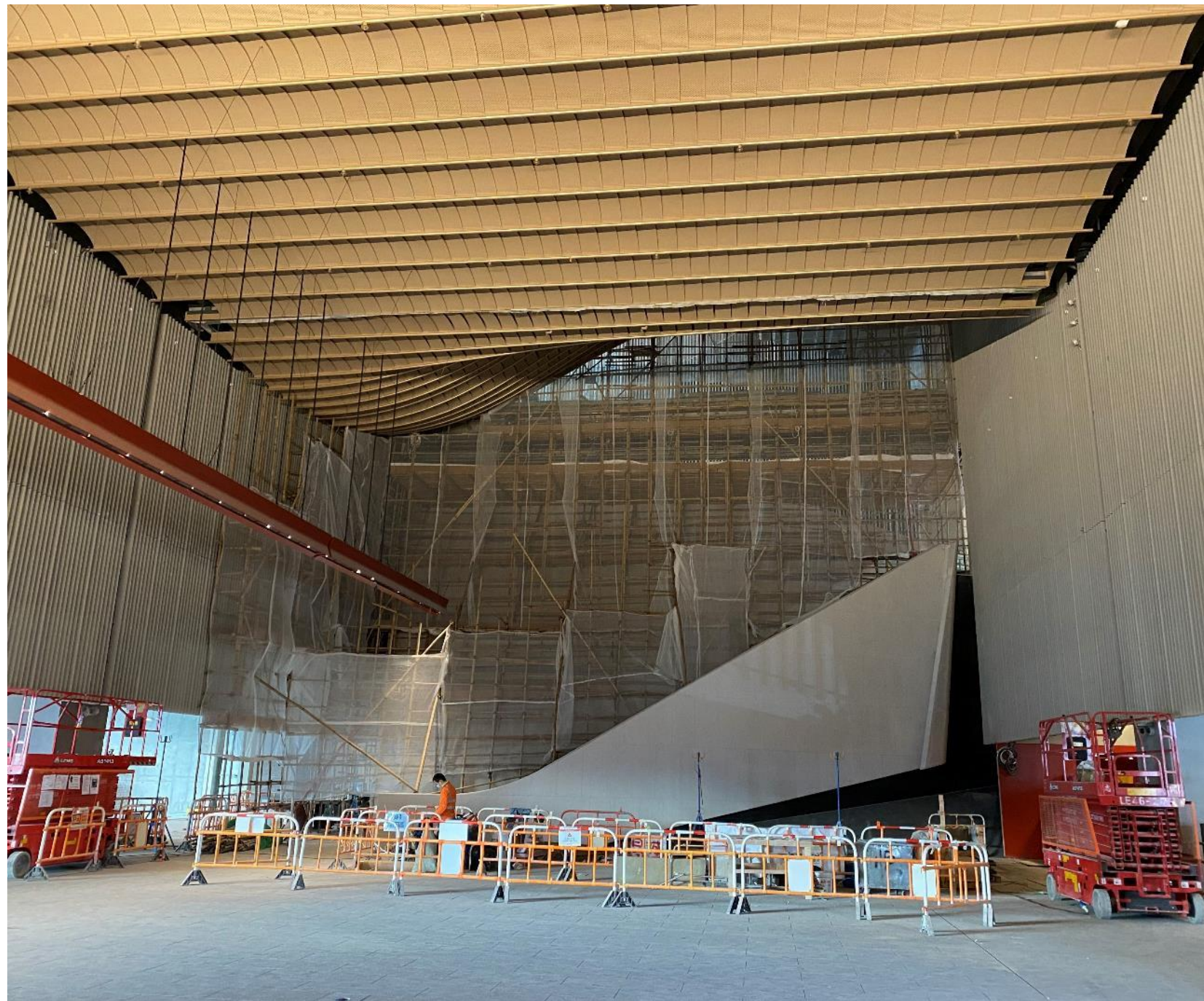
# 故宮聯繫概念 Imperial Palace Linkage Concept

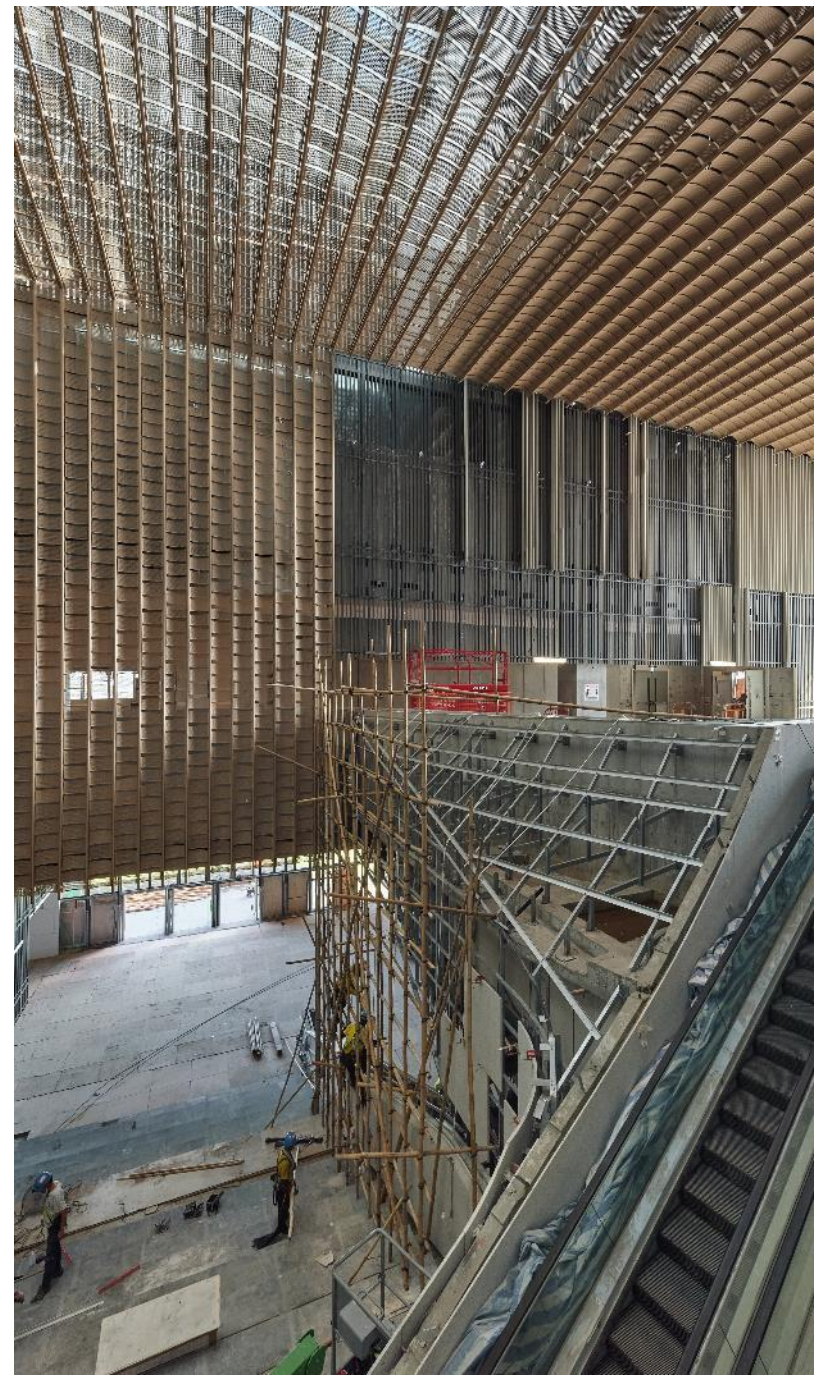
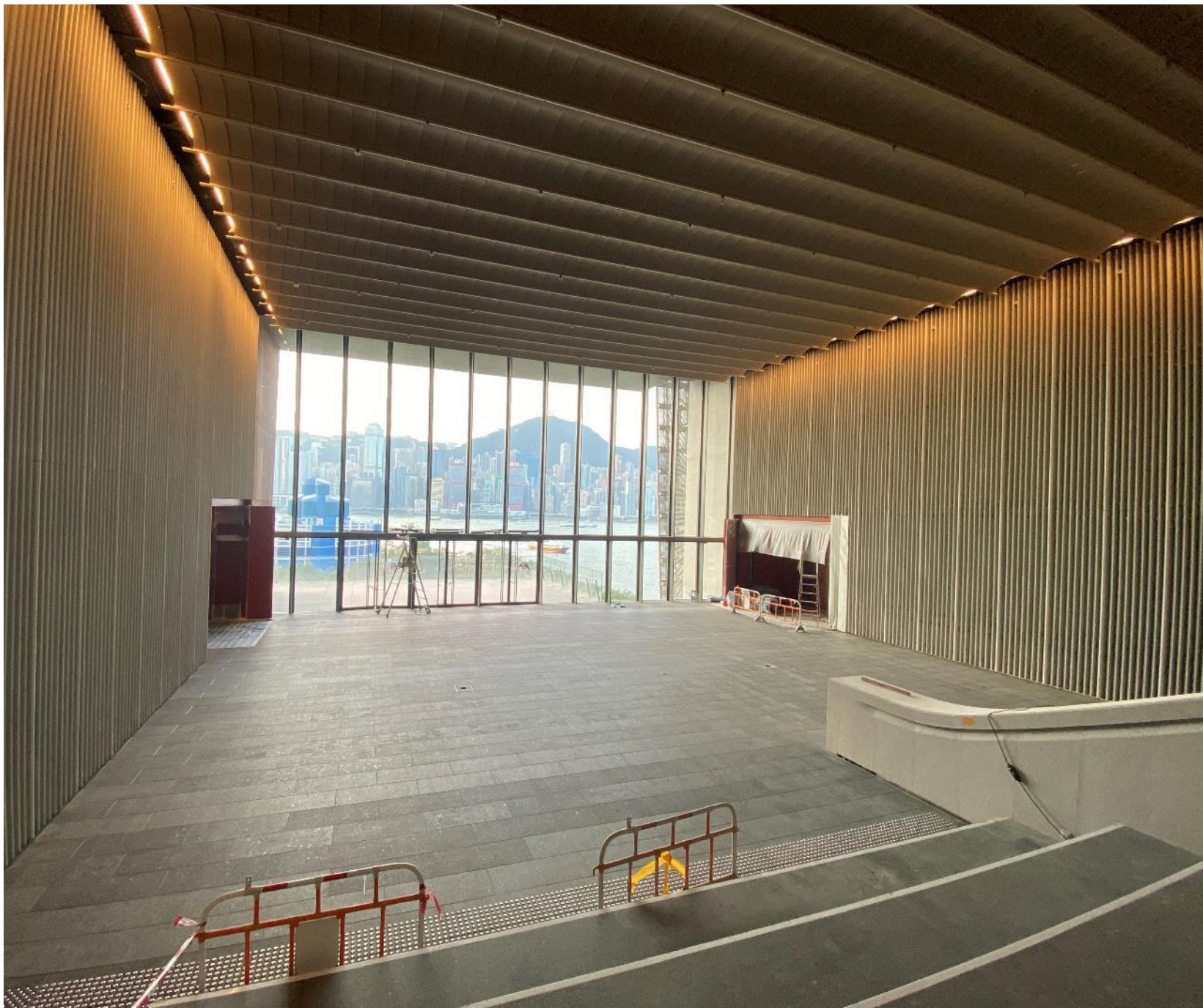


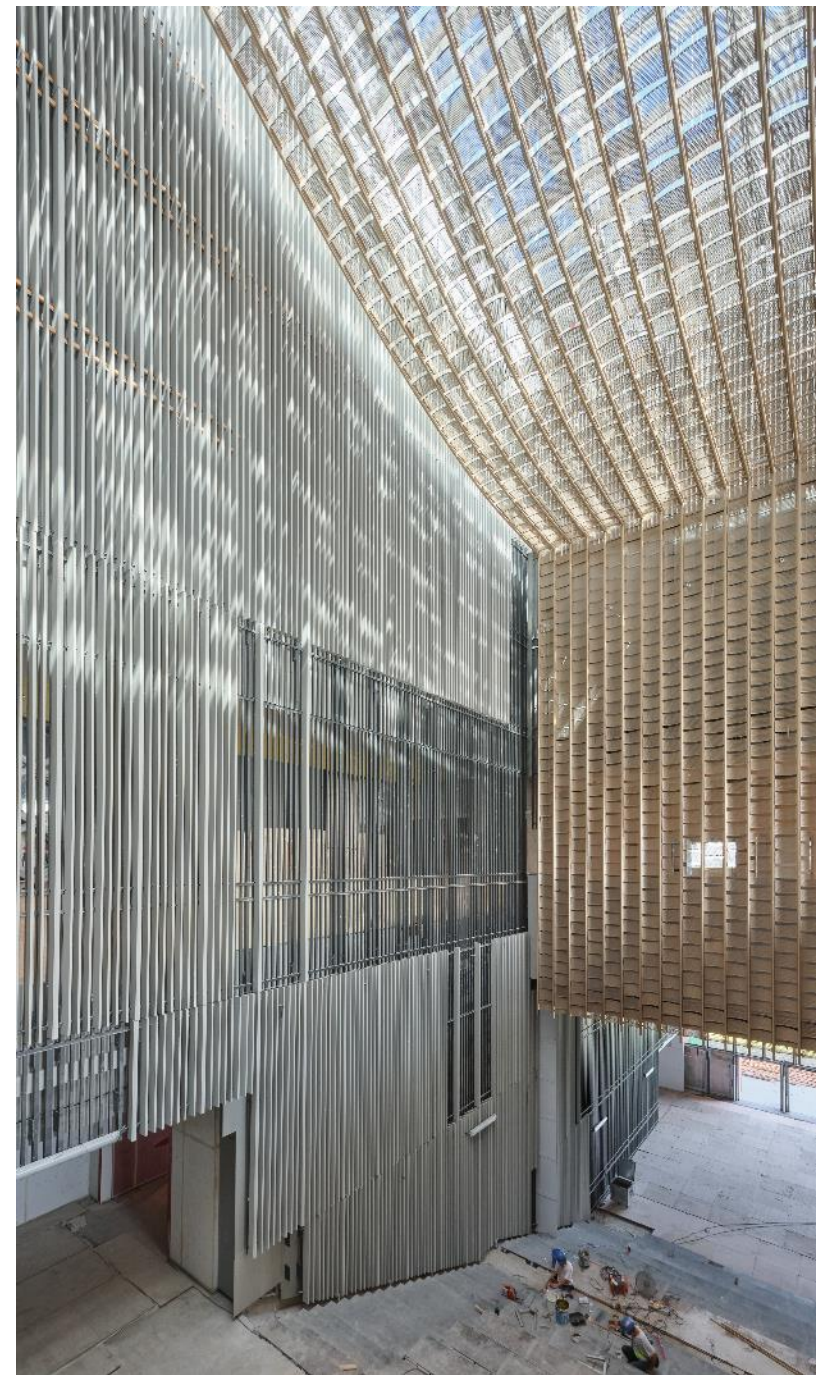
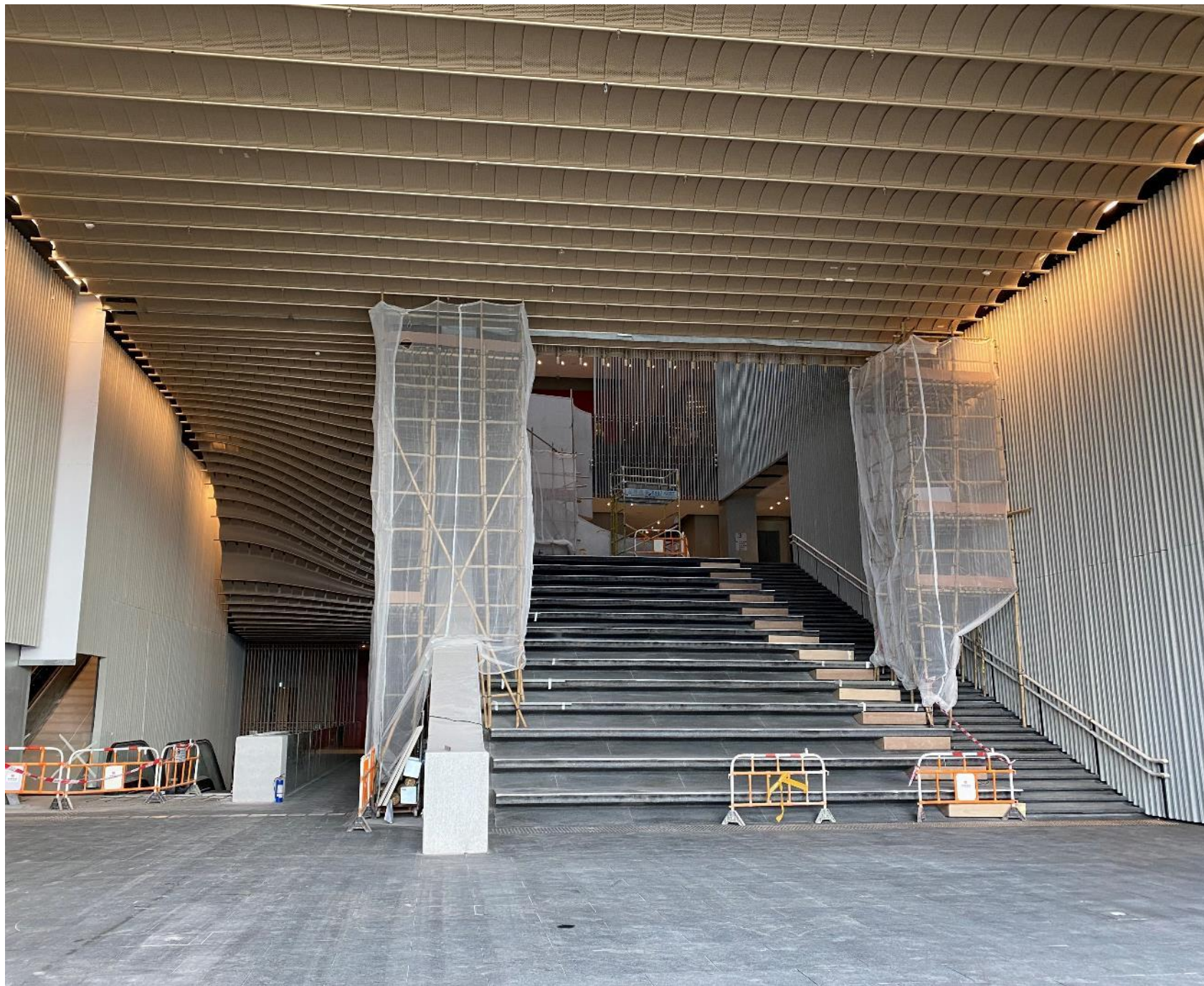


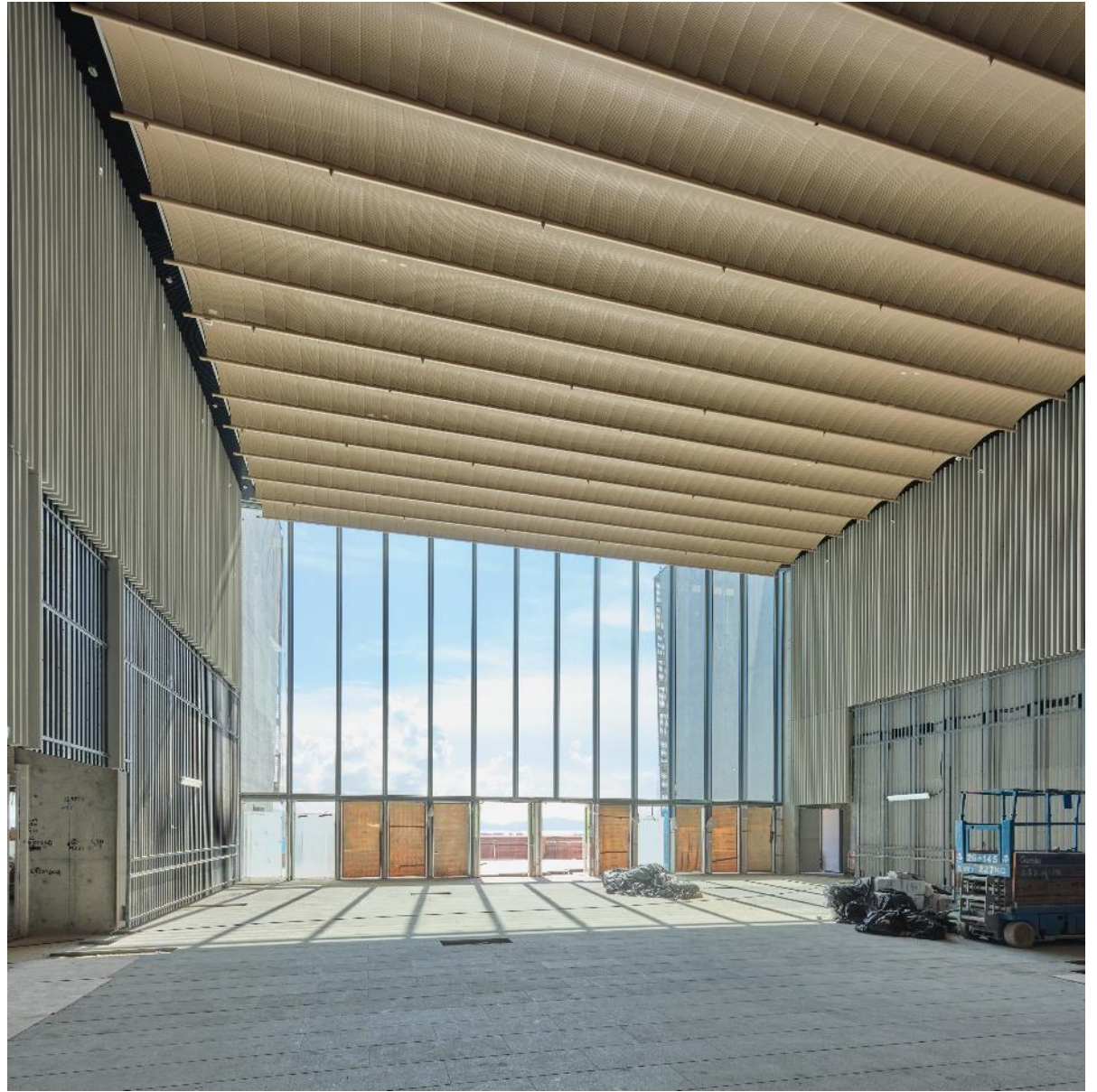
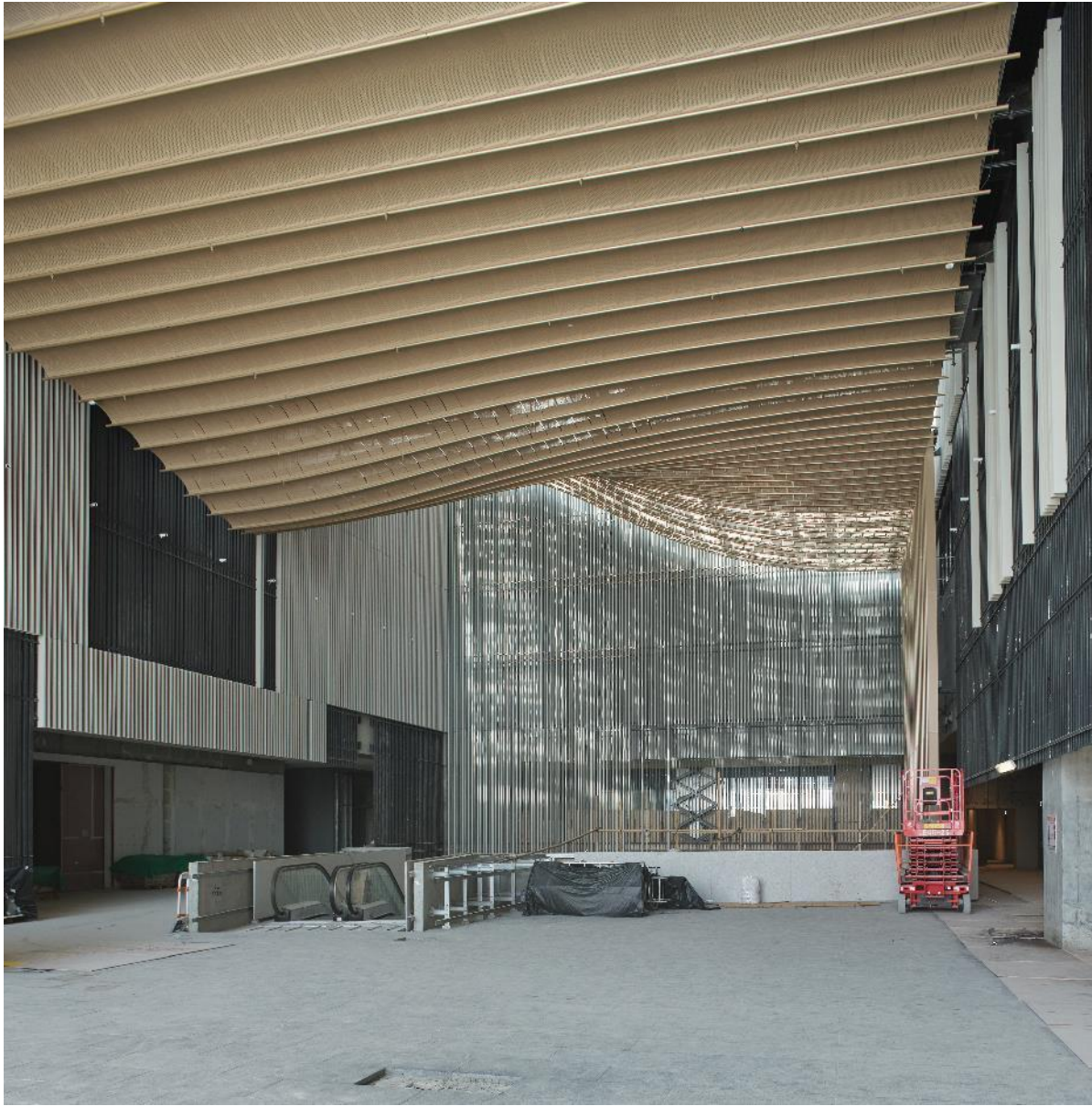


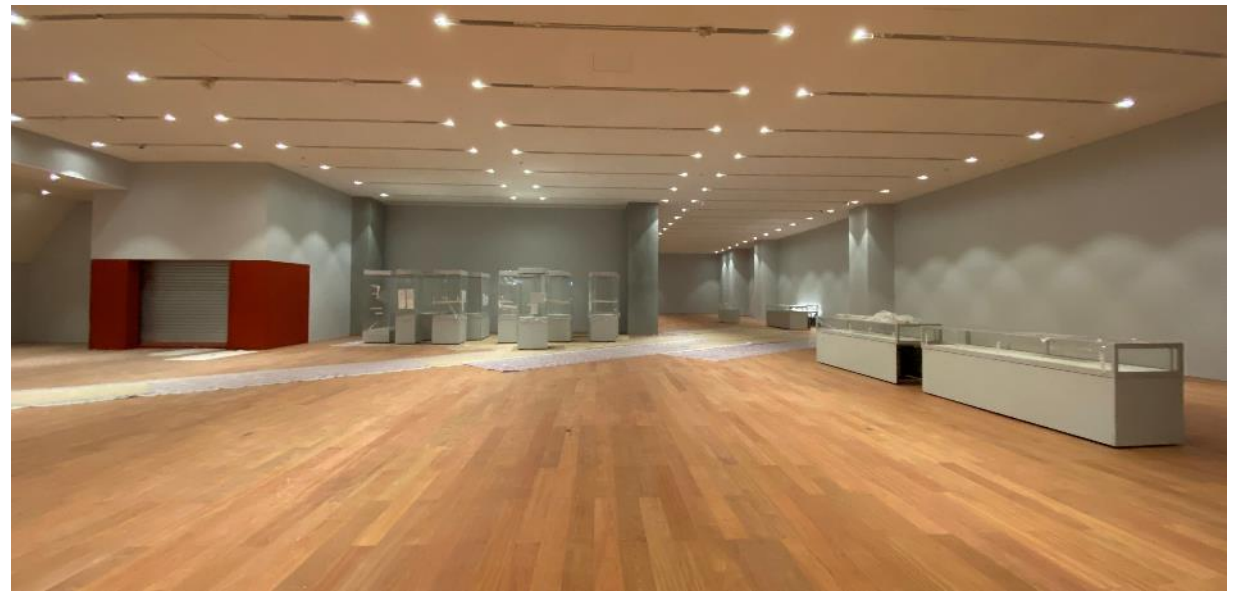












## Museum at a glance

Gross floor area

**30 000**

square meters

Learning centre

**1 600**

square meters

Promenade cafes

**370**

square meters

Construction cost

**3.5**

billion

Auditorium (400 seats)

**570**

square meters

Restaurant (420 seats)

**1 300**

square meters

Exhibition galleries (9)

**7 800**

square meters

Museum shop

**470**

square meters

Expected annual visitors

**2**

million

Palace Museum exhibits

**914**

Pieces

Venue hire

**1 250**

square meters

Expected opening date

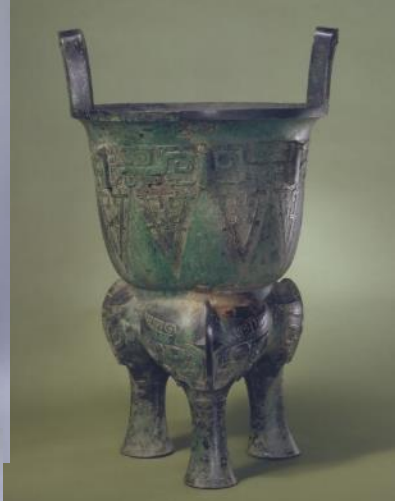
**7**

2022

## Opening Exhibitions

Gallery	Floor	Theme	Area (m <sup>2</sup> )
1	G/F	Entering the Forbidden City	800
2	1/F	A Day inside the Forbidden City	1700
3	2/F	Treasures of Imperial Ceramics from the Palace Museum	760
4	2/F	Portraits of Emperors and Empresses, 1644–1911	650
5	2/F	Traditional Craft Meets Contemporary Design	820
6	3/F	Art Collecting in Hong Kong	630
7	3/F	Contemporary Art in Dialogue with Palace Culture	510
8	3/F	Masterpieces of Painting and Calligraphy from the Palace Museum	1050
9	4/F	Grand Gallop: From the Forbidden City to the Louvre	880
			<b>7800</b>

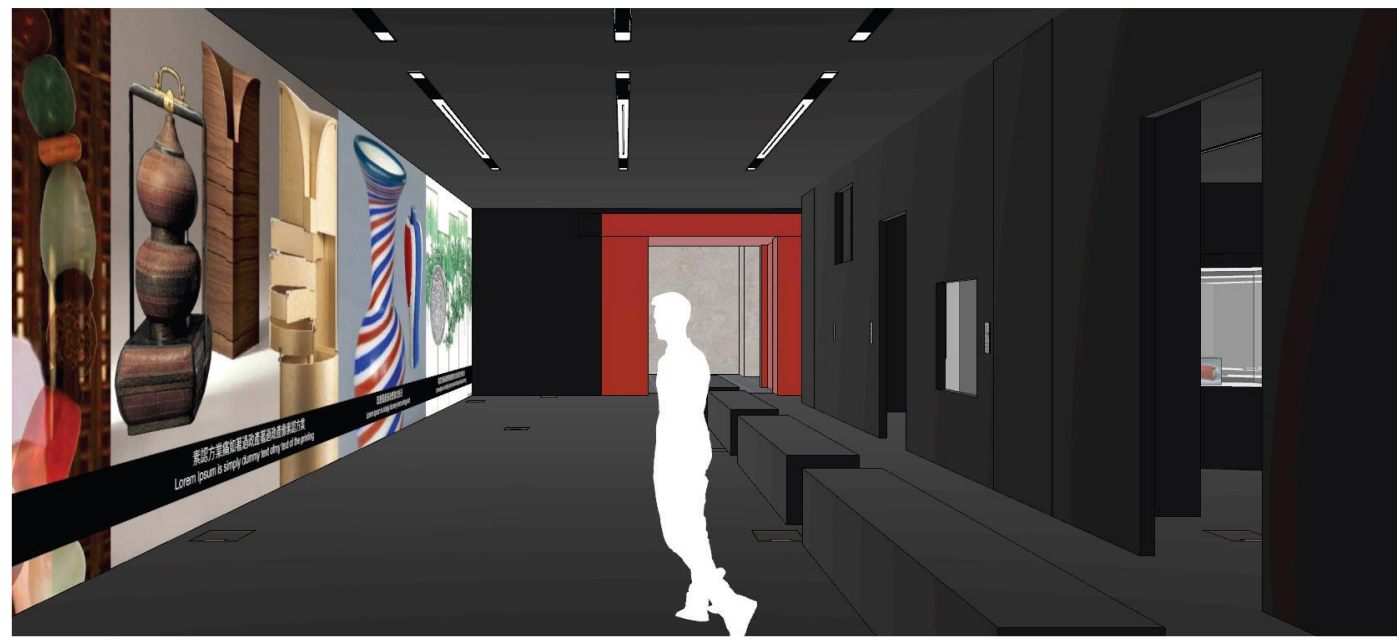
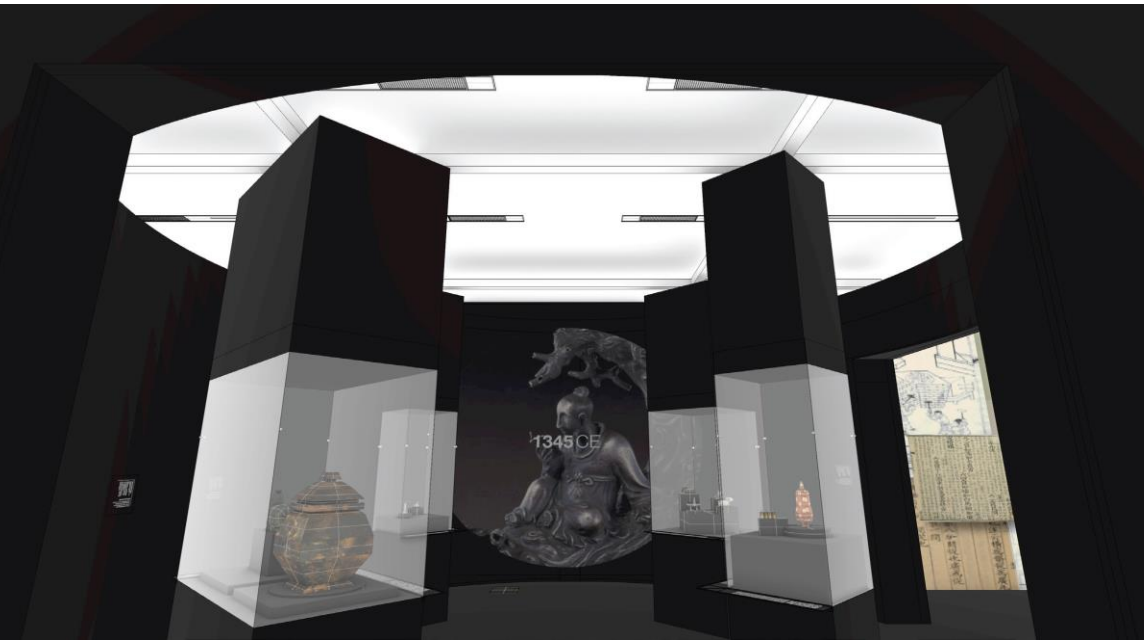
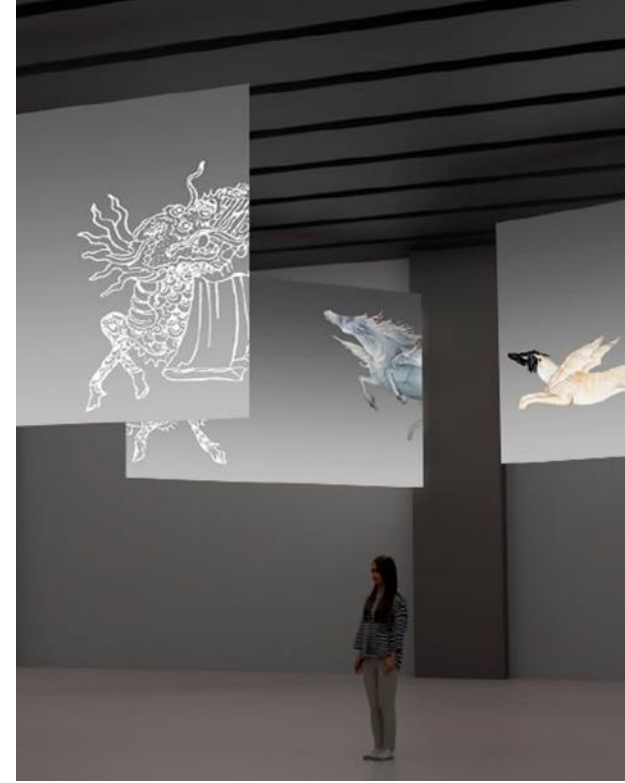
**Opening exhibitions:  
914 art objects on  
loan from Palace  
Museum**



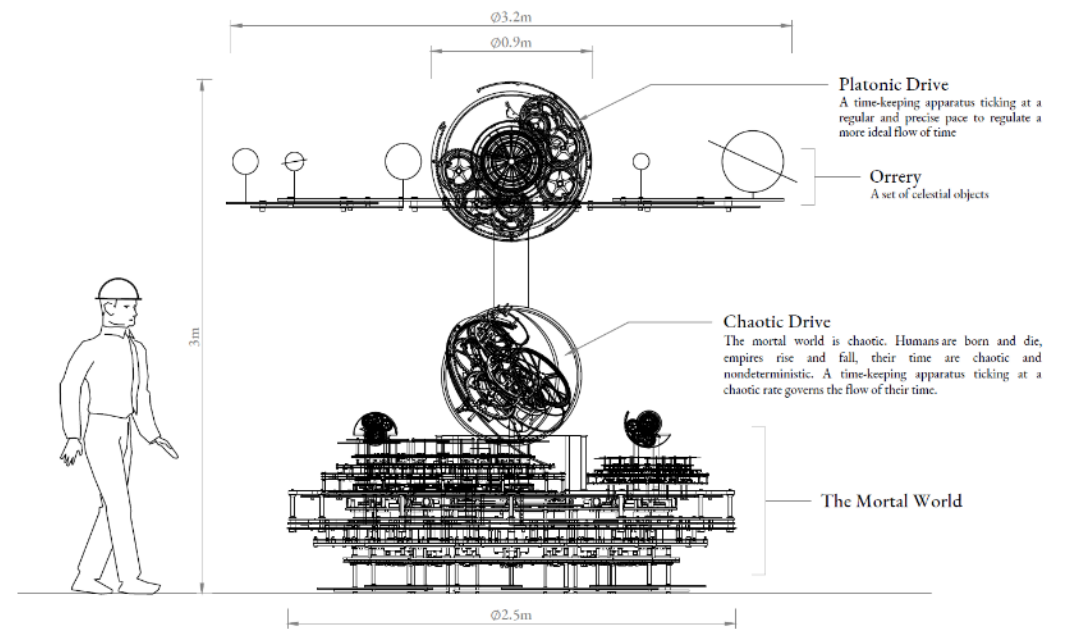
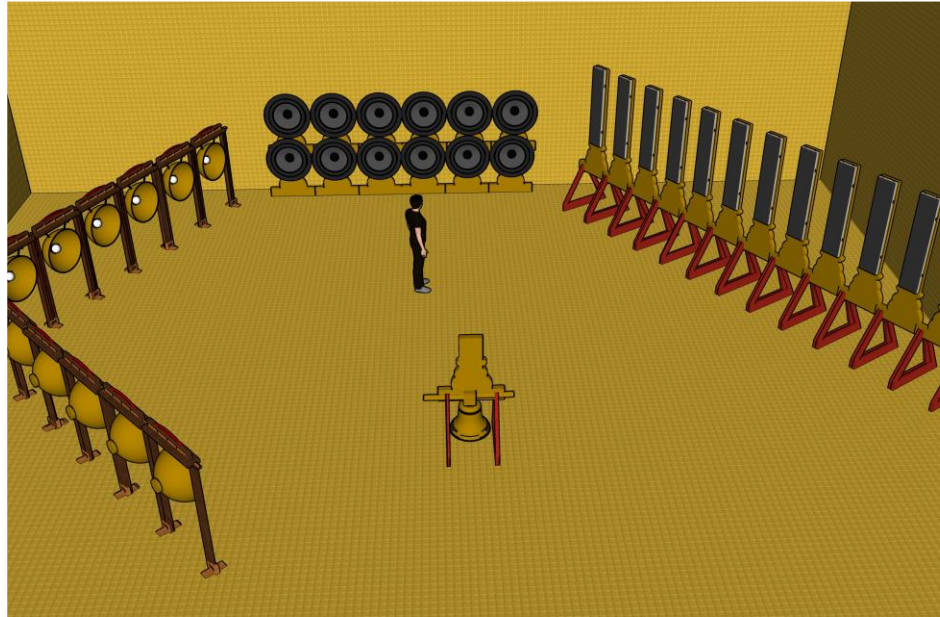
望江南  
 白雲法師撰  
 杜雪道人書  
 西方好隱念即超羣一點靈  
 光隨落日萬端塵事付浮雲  
 人世自餘 漸望處決它去  
 樓神金地經行兜裏步玉  
 樓宴坐空中身方好任天  
 生  
 西方好瓊樹清高空彌覆  
 七重珠寶網莊嚴百億妙  
 華宮裏衆天童金地上欄  
 栢繞重華而飄香散湧  
 洪音寮亮鼓清風聞者樂  
 云宮  
 西方好七寶瓏成池四色好  
 夜敷茵茵八功德水泛清漪  
 除渴又除飢池岸上樓殿  
 勢飛翠碧玉雕欄填碼碯  
 黃金免棟間玻璃隨雲散  
 光輝  
 西方好摩烏茨香聲華下  
 和吟歌六度光中哀雅讀  
 三乘別旨存三急首



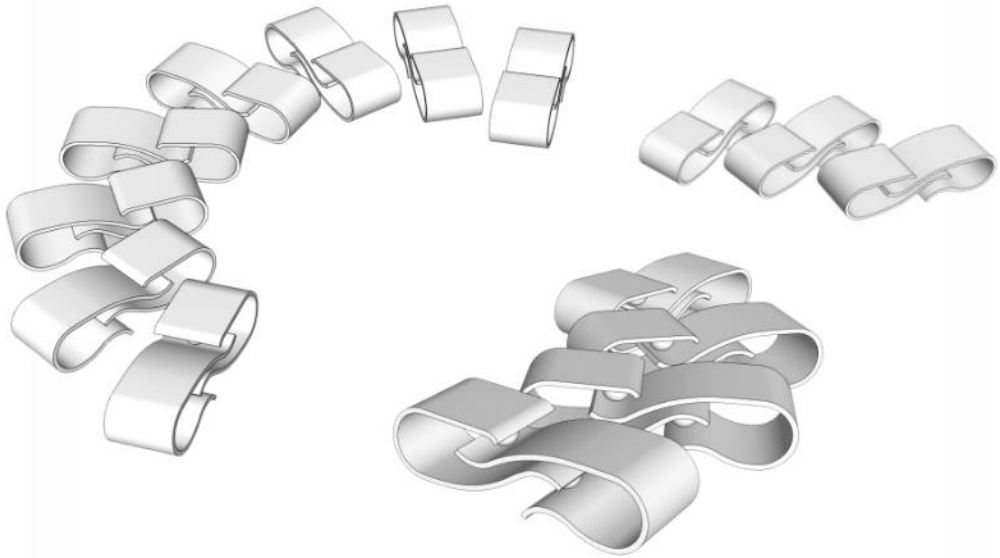
# Hong Kong's interpretation of Palace Museum artefacts



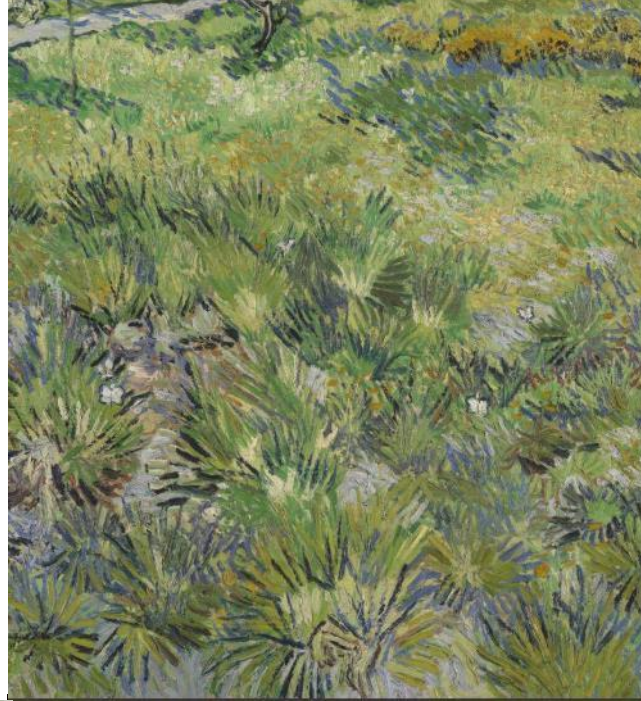
**Multi-media art works created by Hong Kong young artists in dialogue with Palace Museum culture**



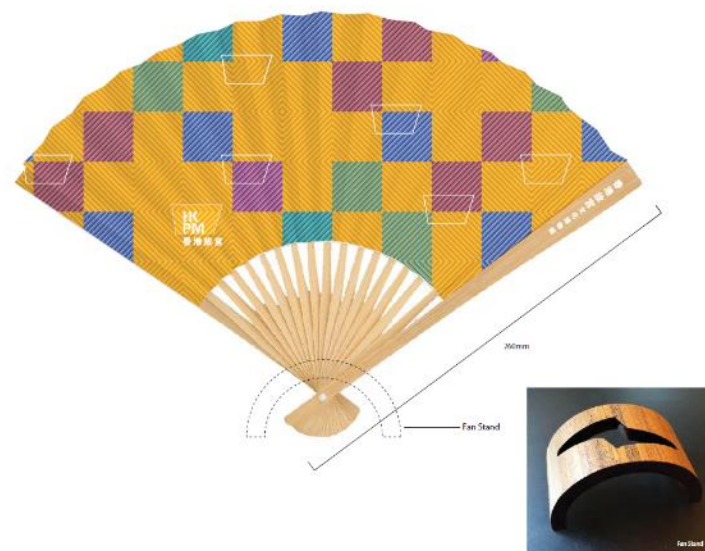
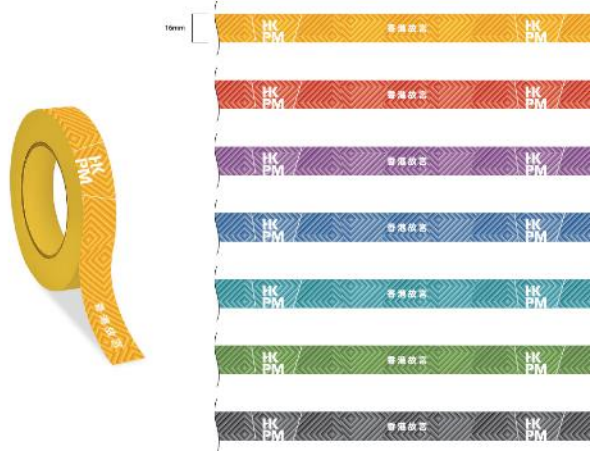


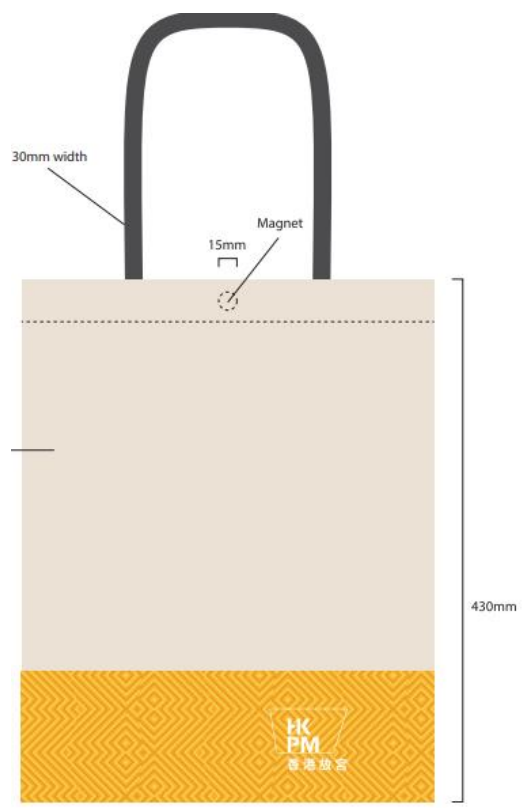


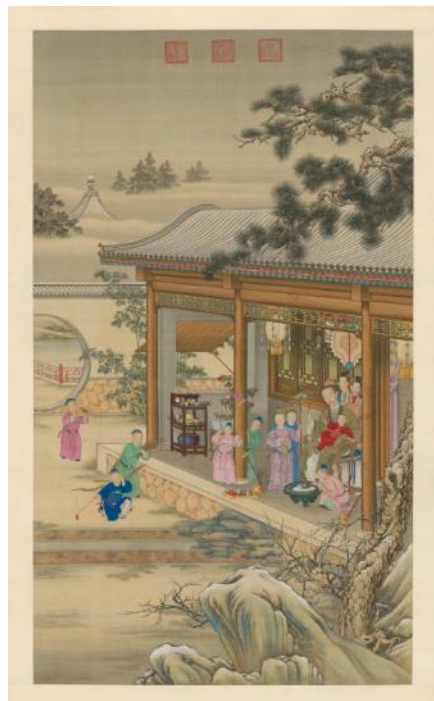
Special exhibitions:  
dialogue among  
world  
civilizations

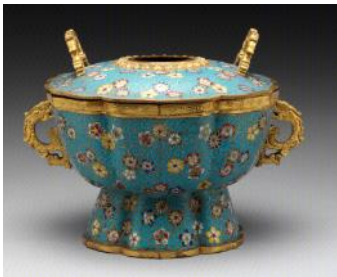




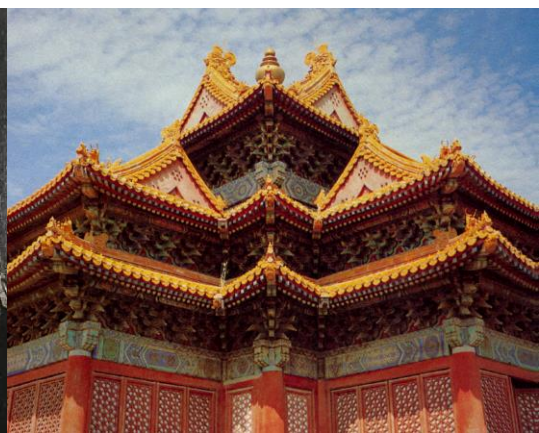








- To promote Chinese art and culture, and advance dialogue among world civilisations
- Contemporary interpretation of historical objects in relation to modern life and experiences
- Hong Kong perspective, global vision and new curatorial approach
- Global partnership for research, exhibitions and curatorial collaborations
- A cultural resource for local community to stimulate learning and creativity





**Thank You**