

FOLLOWING IN THE FOOTSTEPS  
OF  
ANCIENT SCULPTURES  
(GREEK AND ROMAN SCULPTURES IN EUROPEAN  
MUSEUMS)

BY  
PROFESSOR NORMAN WAH MAN KO  
高華文教授

THE ORIGIN  
THE NATIONAL ARCHAEOLOGICAL MUSEUM  
ATHENS, GREECE

THE MODIFICATION  
THE ISTANBUL ARCHAEOLOGICAL MUSEUMS  
ISTANBUL, TURKEY

THE IMPACT  
THE LOUVRE MUSEUM  
PARIS, FRANCE

# MY SECOND SCULPTURE



*Warrior I*

Marble

1979

21(H) x 18 x 8 cm



# THE MEDITERRANEAN IN CA. 6<sup>TH</sup> CENTURY BC

**RED** – GREEK CITIES; **YELLOW** – PHOENICIAN; **GREY** – OTHER CITIES

# THE EMPIRE OF ALEXANDER THE GREAT

## 334 - 323 BC



POWER AND WEALTH SHIFTED TO THE ASIA MINOR, SYRIA AND EGYPT  
GREECE LOST HER SIGNIFICANCE



THE ROMAN EMPIRE AT ITS PEAK UNDER TRAJAN IN 117 AD



THE NATIONAL ARCHAEOLOGICAL MUSEUM, ATHENS, GREECE

ESTABLISHED IN 1829, DURING THE GREEK WAR OF INDEPENDENCE

# CYCLADIC ART

3000 – 2000 BC

THE CYCLADES  
A GREEK ISLAND GROUP  
IN  
THE AEGEAN SEA

*Figurine of a woman*

Marble

Ca. 2500 - 2300 BC

Height: 48 cm



# MYCENAEAN ART

1600 – 1100 BC



*Funeral mask, from the royal tombs*    Hammered gold    Ca. 1500 BC    Height: approx. 30 cm

# ARCHAIC PERIOD

620 - 480 BC

*Figurine of a goddess*

Ivory

8th century BC

Height: 0.24 m



NEAR EAST INFLUENCE

## EGYPTIAN INFLUENCE

ONE OF THE LARGEST KOUROS  
LARGER THAN LIFE-SIZE

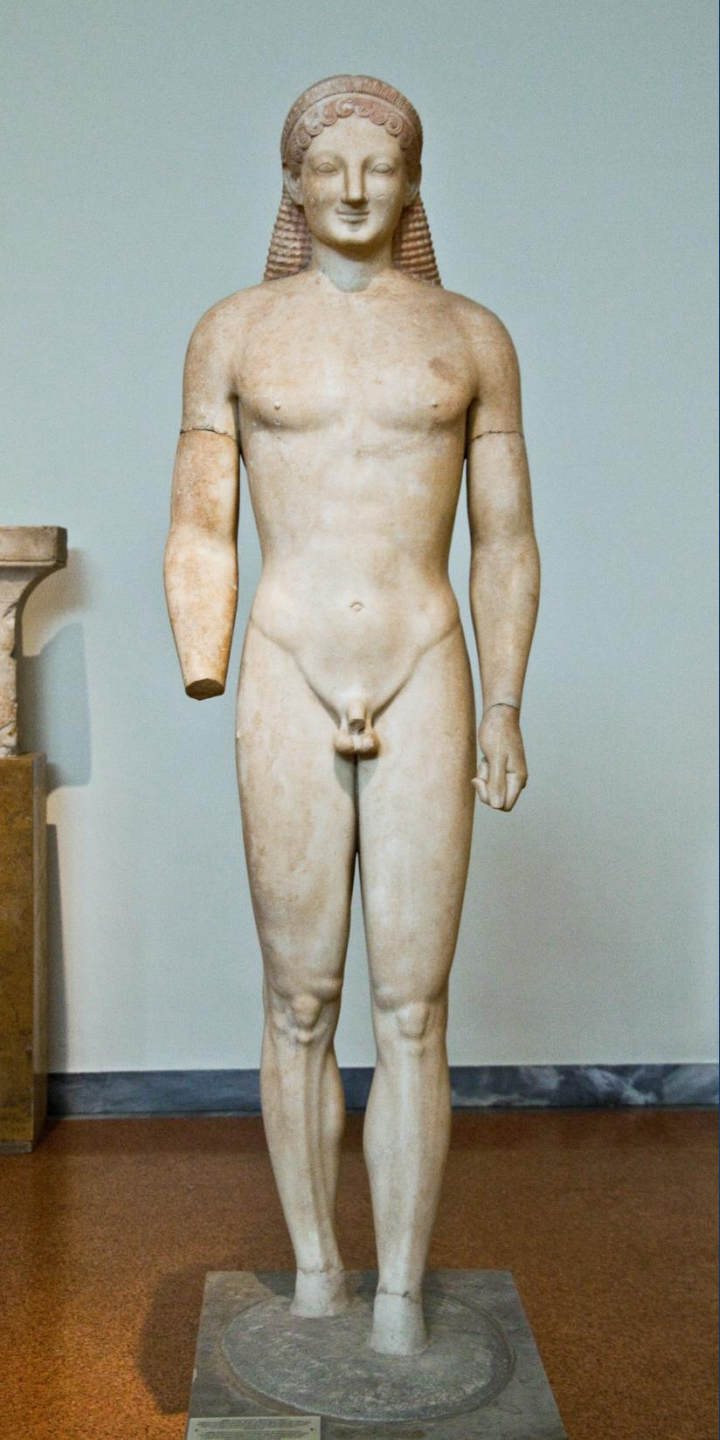
### PROPORTIONS OF KOUROS

STANDARD  
HEAD : HEIGHT 1 : 7

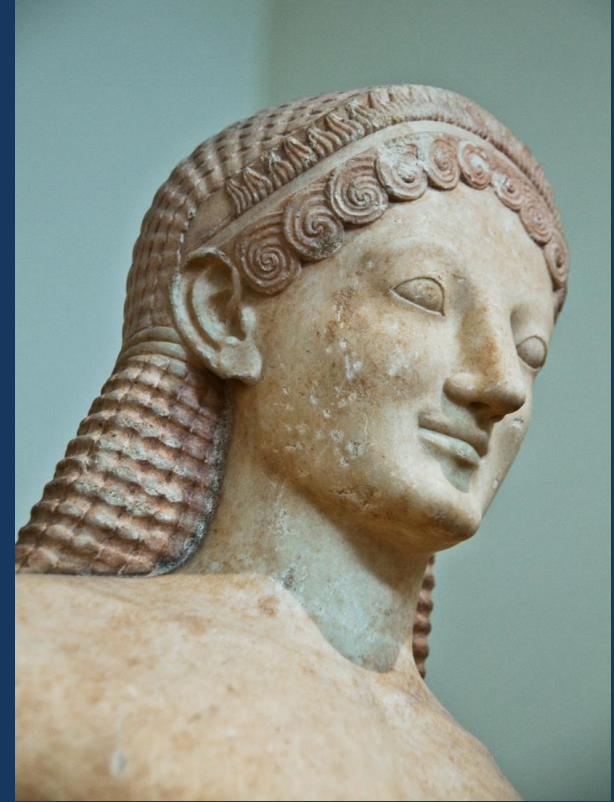
OUTSIZE  
HEAD : HEIGHT 1 : 9  
1 : 6.5



*Kouros*  
Naxian marble  
About 600 BC  
Height: 3.05 m



*Kouros*  
Parian marble  
About 540-530 BC  
Height: 1.89 m



AN UPRIGHT STANCE  
WITH STRAIGHT OR LIGHTLY FIXED ARMS AT THE SIDES  
FIST CLENCHED  
ONE LEG IS SLIGHTLY ADVANCED, USUALLY THE LEFT

*Kore*  
Parian marble  
About 550-540 BC  
Height: 1.79 m

STATUES OF ANCIENT GREECE WERE PAINTED  
WITH VIVID COLORS

KORE - YOUNG GIRL

DRESSED IN RICH CHITONS AND DRAPED HIMATIA  
OFTEN HOLDING AN OFFERING



*Head*



ELABORATE HAIR STYLE

# CLASSICAL PERIOD

480 - 325 BC

END OF PERSIAN WARS  
TO  
TIME OF ALEXANDER THE GREAT

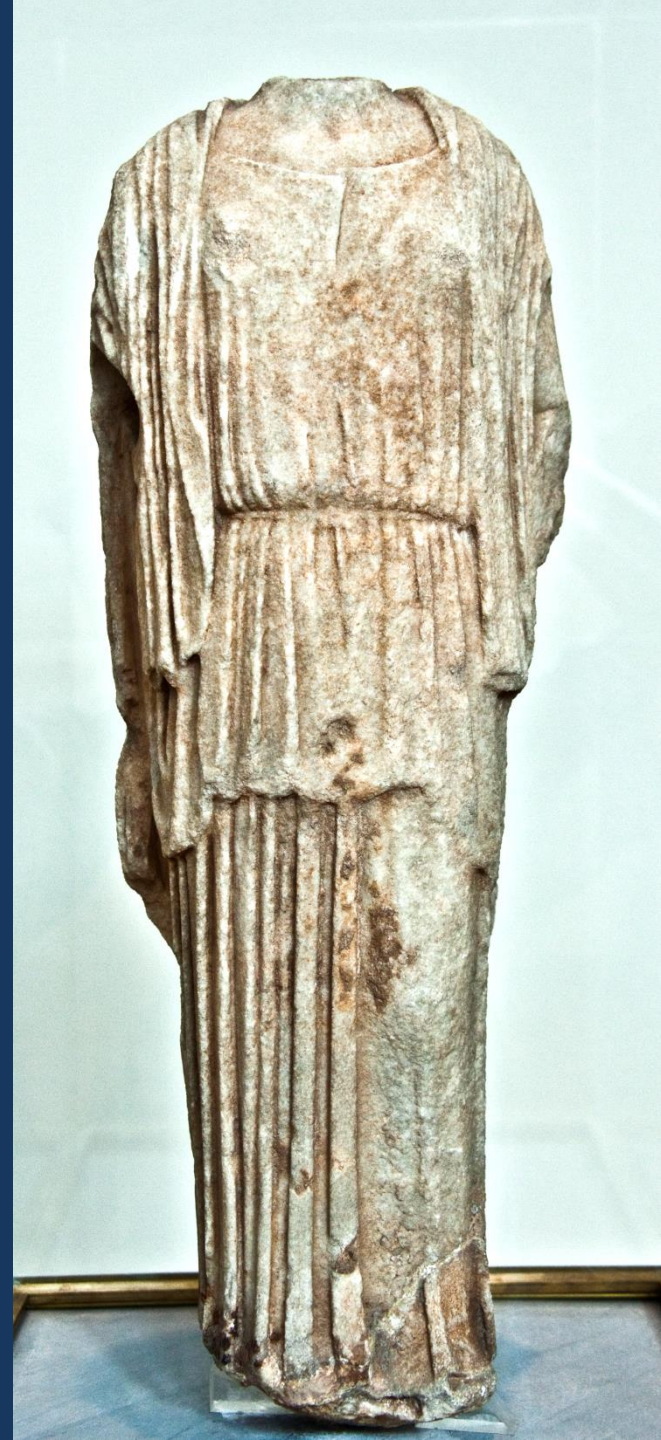
ART  
OF  
THE BEAUTIFUL, IDEALISTIC, ETERNAL BEAUTY, YOUTH  
WITH  
COMPLETE HARMONY AND BALANCE

*Statuette of a goddess*

Marble

About 460 BC

Height: 0.43 m



*Bronze statue of Zeus or Poseidon*

Bronze

About 460 BC

Height: 2.09 m



ONE OF THE FINEST OF THE FEW  
SURVIVING ORIGINAL BRONZE  
STATUES OF THE CLASSICAL PERIOD



*Head*





*Statuette of Athena*

Pentelic marble

About 3rd century AD

Height: 1.05 m

ROMAN COPY OF ATHENA PARTHENOS OF  
PHIDIAS, IN PARTHENON IN 438 BC

*Side view*



RIGHT PALM STANDS A NIKE

*Details*



ATTIC HELMET WITH THREE CRESTS, SPHINX IN THE MIDDLE

BREAST ADORNED WITH RELIEF SNAKES AND GORGONEION AT THE CENTRE



*Head of Athena Pnyx Athena*  
Pentelic marble  
2nd century AD  
Height: 0.45 m

ROMAN COPY OF AN ORIGINAL OF PHEIDIAS. INLAID IN A COLOSSAL STATUE

*Details*



*Statue of a youth binding his hair  
(Diadoumenos)*

Island marble  
About 100 BC  
Height: 1.95 m



A COPY OF POLYKLEITOS

IN THE FIFTH CENTURY BC



*Head of a statue of Hera*  
Marble  
About 420 BC  
Height: 0.27 m

*Female statue*  
Pentelic marble  
About 420-410 BC  
Height: 0.77 m



# VOTIVE AND FUNERAL ART



*Votive relief*

Pentelic marble

About 430 BC

Height: 0.75 m, width: 0.88 m

MANY ATHENIAN GRAVE STELAI WERE BUILT INTO THE THEMISTOKLEAN WALL AFTER THE WITHDRAWAL OF THE PERSIANS



*Grave stele*  
Pentelic marble  
About 4th century BC  
Height: 1.32 m, width: 0.95 m

# SCULPTURES

4<sup>TH</sup> CENTURY BC

*Female statue*

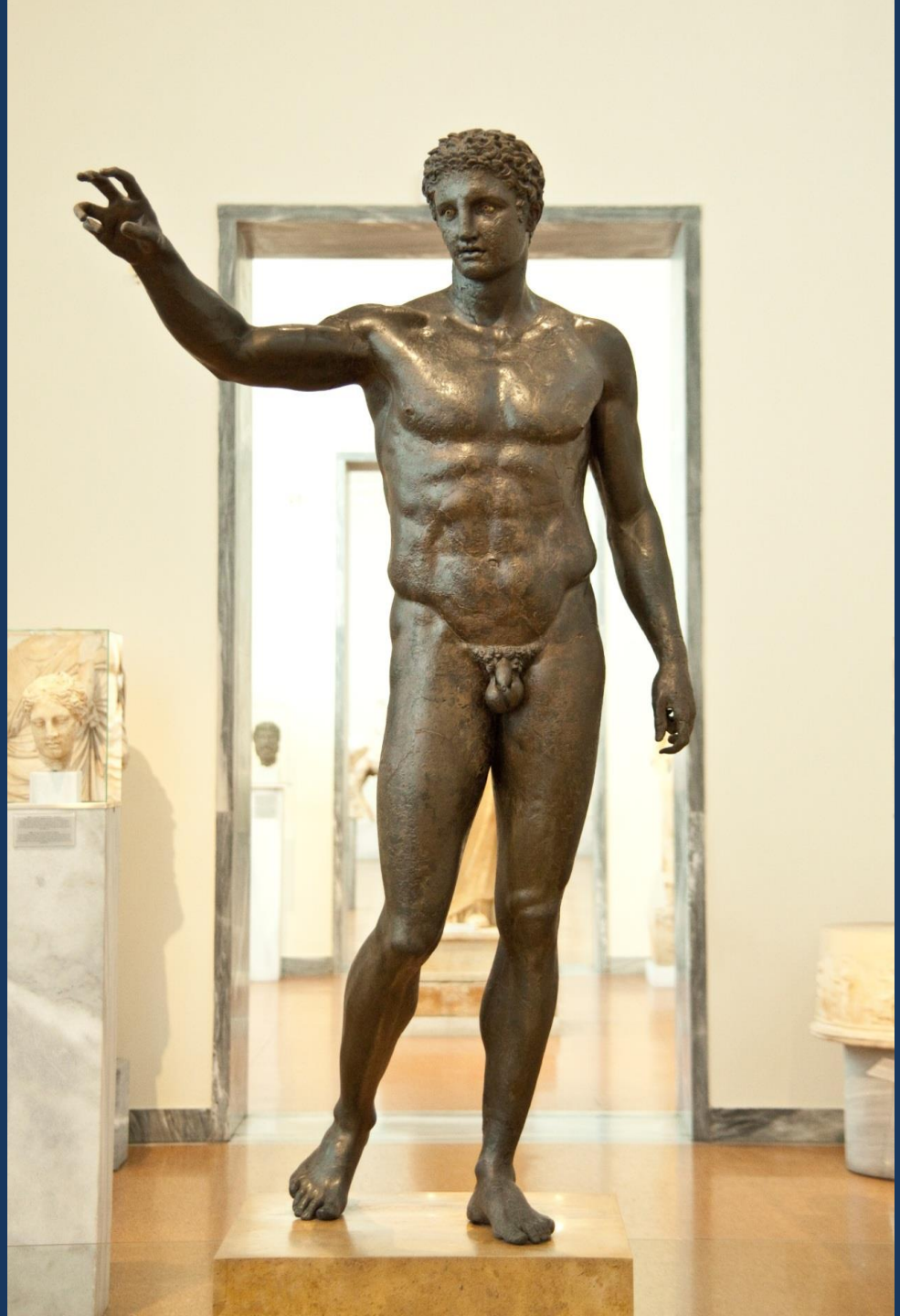
Marble

About 1st century AD

Height: 2 m



*Statue of a youth*  
Bronze  
About 340-330 BC  
Height: 1.94 m



FOUND IN A SHIPWRECK CARRIED  
MARBLE AND BRONZE SCULPTURES

*Head*



SURFACES CORRODED IN SEAWATER



*Relief frieze slab (part of)*

Pentelic marble

4th century BC

Height: 0.555 m, length: 1.07 m, thickness: 0.4 m

AN AMAZON ATTACKS A NUDE GREEK

*Statue of a youth*

Parian marble

Found in the Antikythera shipwreck in 1900

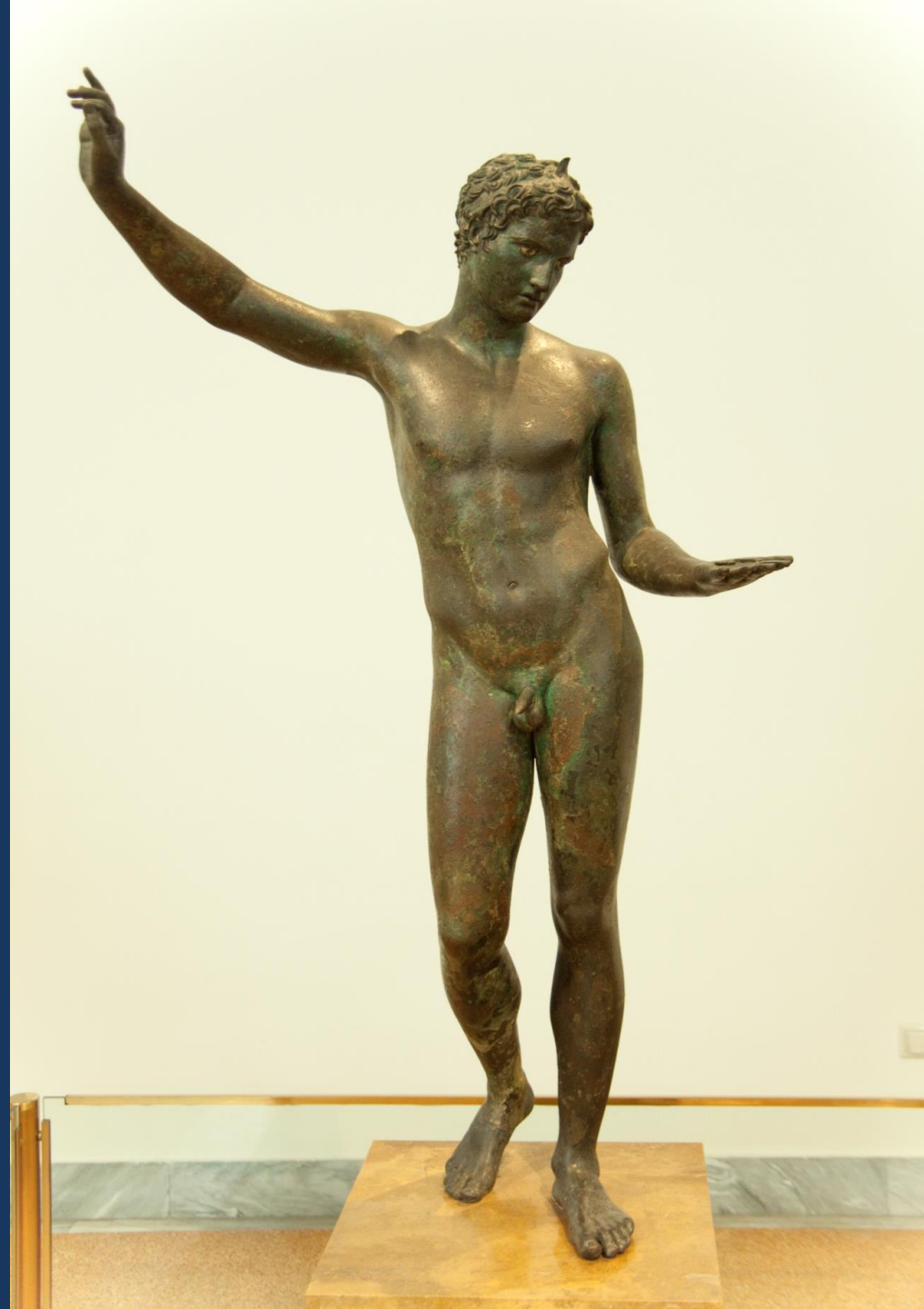
Late Hellenistic period

Height: 1.10 m



THE WHOLE OF THE RIGHT SIDE IS  
CORRODED BY SEAWATER

*A young athlete*  
Bronze  
About 340-330 BC  
Height: 1.3 m



ONE OF MASTERPIECES OF LATE  
CLASSICAL PERIOD

*Head*



EYES ARE INSET LIMESTONE, WITH GLASS PUPILS

# HELLENISTIC PERIOD

323 - 31 BC

DEATH OF ALEXANDER THE GREAT TO  
THE PRINCIPATE OF AUGUSTUS

TWO BASIC FEATURES OF HELLENISTIC ART

NATURALISM

REALISM

REALISM, VIOLENT MOVEMENTS,  
STORMY PASSION

*Statuette of a girl*

Pentelic marble

310-300 BC

Height: 0.7 m





*Statue of a horse and young jockey*

Bronze

About 140 BC

Height: 2.10 m

FOUND IN SEA OFF CAPE ARTEMISION IN 1928. HEAVILY RESTORED  
THE SMALL JOCKEY IS A NEGRO

*Statuette of Aphrodite (?)*  
Pentelic marble  
1st century BC  
Height: 0.64 m

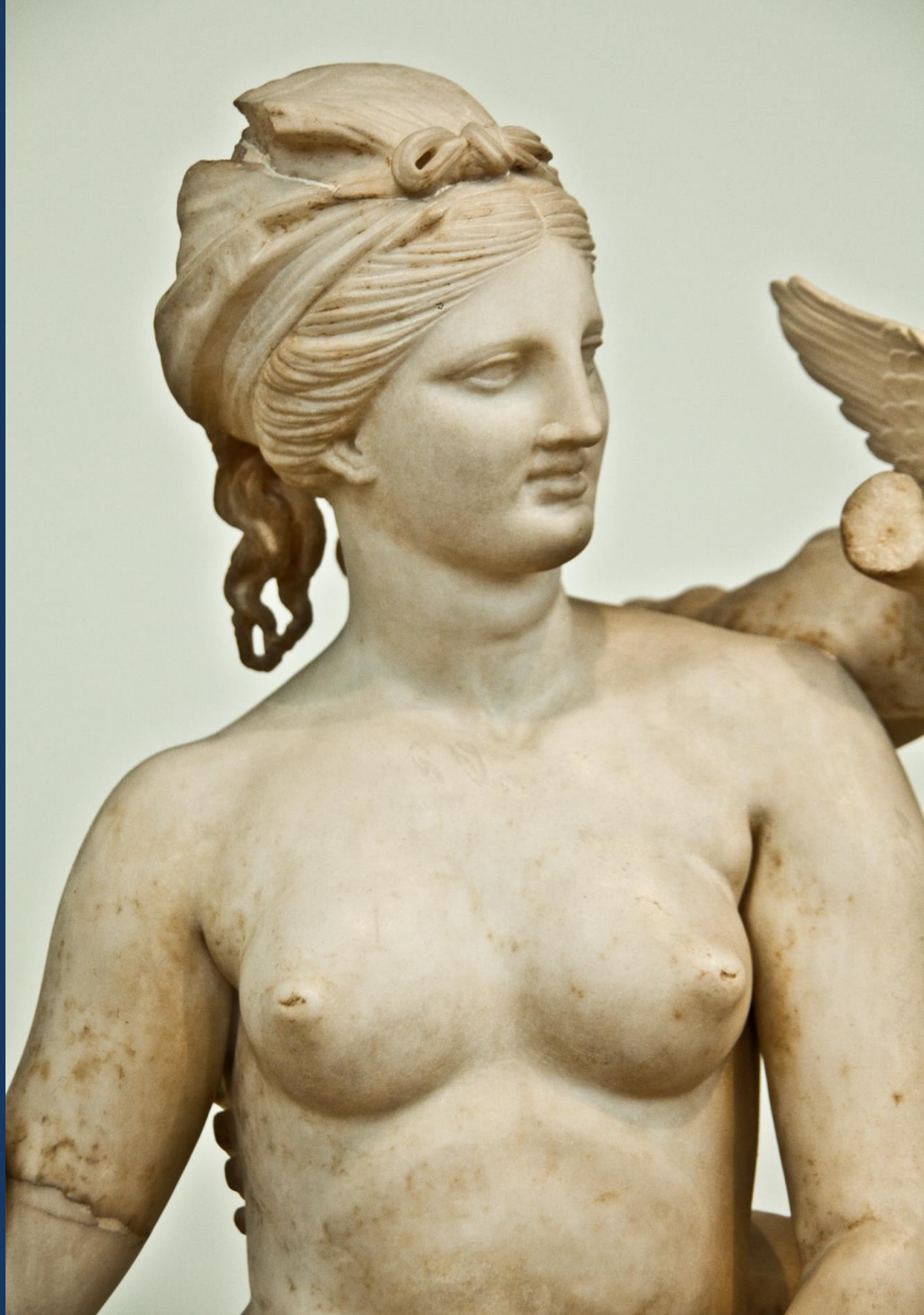


TRANSPARENT DRAPERY  
LEAVING THE BODY  
BENEATH ALMOST NAKED

*Group of Aphrodite, Pan and Eros*  
Parian marble  
About 100 BC  
Height: 1.55 m



APHRODITE IS NUDE, SANDAL IN HER  
RIGHT HAND THREATENING TO STRIKE  
PAN. EROS HOVERS ABOVE AND TRIES TO  
PUSH PAN AWAY



A SMALL KERCHIEF BOUND  
AROUND HER HEAD WITH A  
BOW ON TOP

THE MODIFICATION

THE ISTANBUL ARCHAEOLOGICAL MUSEUMS  
ISTANBUL, TURKEY

# THE ISTANBUL ARCHAEOLOGICAL MUSEUMS THE OLD MUSEUM



OPENED IN 1891

FOR THE SARCOPHAGI FROM A ROYAL NECROPOLIS AT SIDON (SAIDA IN LEBANON)

1993 'COUNCIL OF EUROPE AWARD' FOR MUSEUMS

# CLASSICAL PERIOD

480 - 325 BC

END OF PERSIAN WARS TO TIME OF ALEXANDER THE GREAT

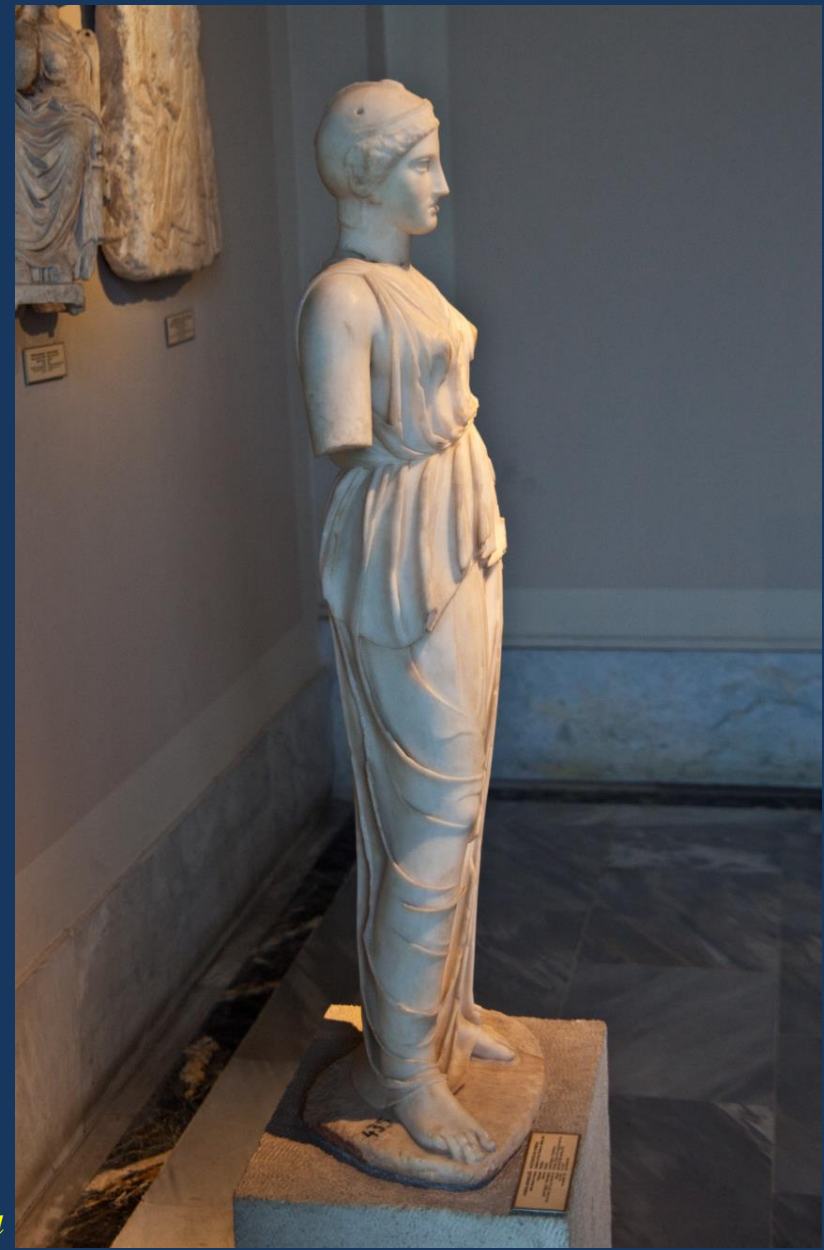


*Head of a horse*

Marble

Classical period, second half of the fifth  
century BC

Height: 38 cm



*Statue of Athena*  
Marble

Roman period (copy of fifth century BC)  
Height: 113 cm



DISCOVERED IN LEPTIS MAGNA, LIBYA

THE LOCATION SHOWS TRANSPORT OF SCULPTURES ACROSS THE MEDITERRANEAN  
AT THE END OF THE FIFTH CENTURY BC

# HELLENISTIC PERIOD

323 - 31 BC

DEATH OF ALEXANDER THE GREAT  
TO  
THE PRINCIPATE OF AUGUSTUS

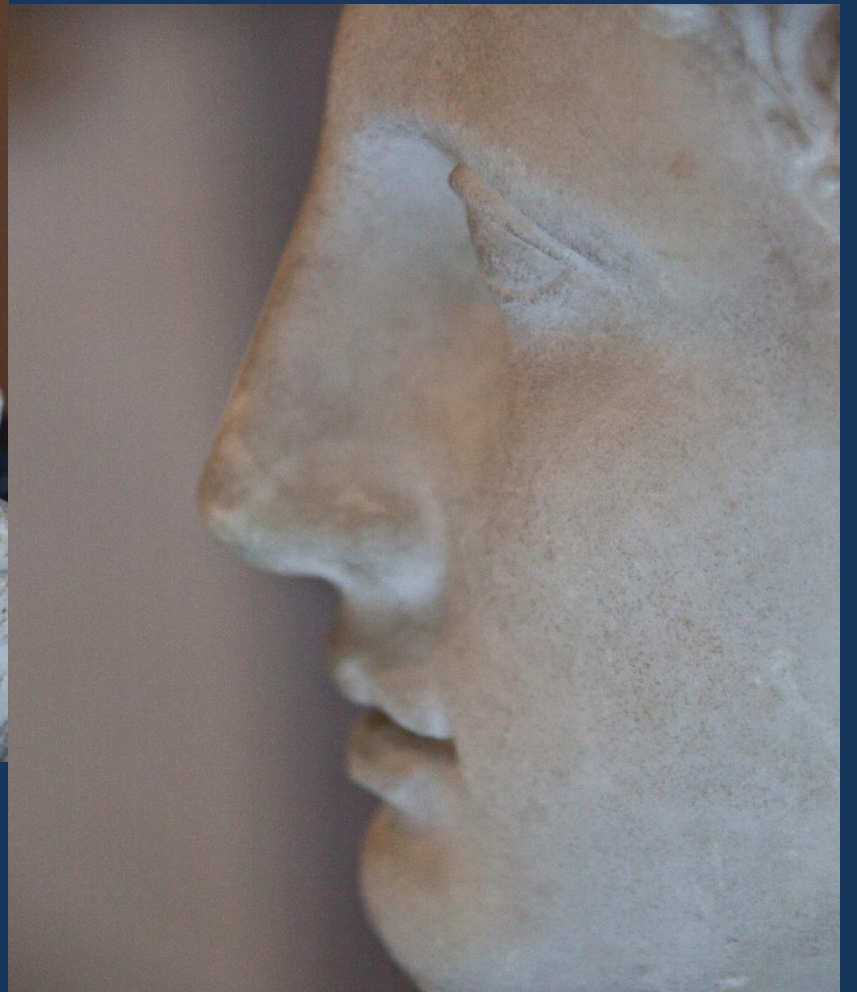


*Head of Alexander the Great*  
Marble  
Hellenistic period, the second century BC  
Height: 42 cm

*Statue of Alexander the Great*  
Marble  
Hellenistic period, mid - third century  
BC  
Height: 190 cm



*Head of Alexander the Great*  
Marble





## TWO BASIC FEATURES OF HELLENISTIC ART

NATURALISM

REALISM

REALISM, VIOLENT MOVEMENTS, STORMY PASSION

*Relief of a Dionysiac dancer*

Marble

Hellenistic period, end of the third century BC

Height: 145 cm, width: 59 cm, thickness: 27 cm

A MANTLE ENVELOPS HER BODY FOLLOWING THE CONTOURS OF ITS  
VIGOROUS MOVEMENT



Small informational text block located in the bottom left corner of the image, partially obscured by a chain barrier.

*Alexander sarcophagus*  
Pentelic marble  
About 325-311 BC  
195 x 318 x 167 cm

THE MOST IMPORTANT WORK  
THE BATTLE BETWEEN THE PERSIANS AND THE GREEKS



*Details of two longer faces*

*Shorter face*



A PANTHER HUNT OF THE ORIENTALS



*Other shorter face*



BATTLE SCENES BETWEEN THE PERSIANS AND THE GREEKS

RESTORED COLOUR



*Details*

ALEXANDER MOUNTED AND CHARGING AT A PERSIAN SOLDIER



RESTORED COLOUR



*Sarcophagus*

THE 'MUSEUM OF SARCOPHAGI'



*Sarcophagus of mourning women*

Pentelic marble

Mid-fourth century BC

179.7 x 265.3 x 138.3 cm

‘COLUMN SARCOPHAGI’

THE COLUMNS ARE IONIC WITH EIGHTEEN WOMEN BETWEEN COLUMNS



*Details*

*Head*



*Body*



VOID ON TOP OF BODY IS FOR INLAID OF A  
SEPARATE HEAD

*Relief of a muse playing the lyre*

Marble

Hellenistic period, second century BC

Height: 70.5 cm, width: 40.5 to 36 cm, thickness:  
4 cm



1028

THE RELIEF SHOWS NEO-ATTIC FEATURES



*Statue of a young woman*

Marble

Late Hellenistic period, first century BC

Height: 145 cm

# ROMAN PERIOD

COPIES OF CLASSICAL WORKS  
ORIGINALS, PORTRAITS

*Colossal head of a goddess*  
(Copy on a Hellenistic original)  
Marble  
Roman period, second century AD  
Height: 90 cm





*Statue of Athena*

Marble

Early Roman period,

first century BC - first century AD

Height: 166 cm





*Head*



*Caryatid*  
Marble

Early Roman period, first century AD  
Height: 186 cm

CARYATID IS THE NAME OF WOMEN DANCED WITH  
BASKETS ON THEIR HEADS



*Side view*



*Statue of Oceanus*

Marble

Roman period, second century

AD

Height: 127 cm



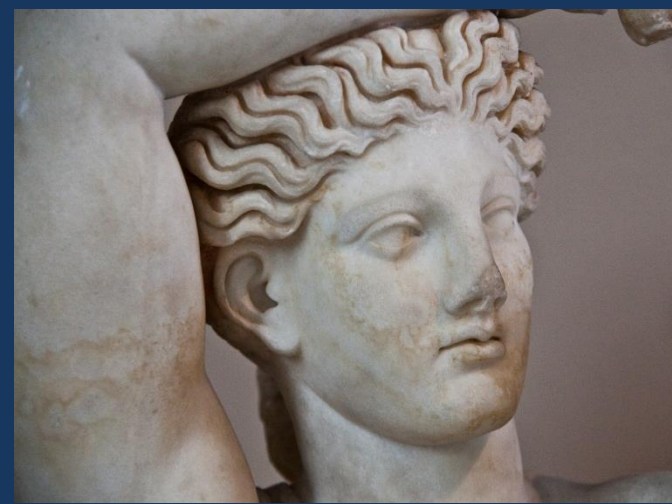
*Statue of Melpomene*

Marble

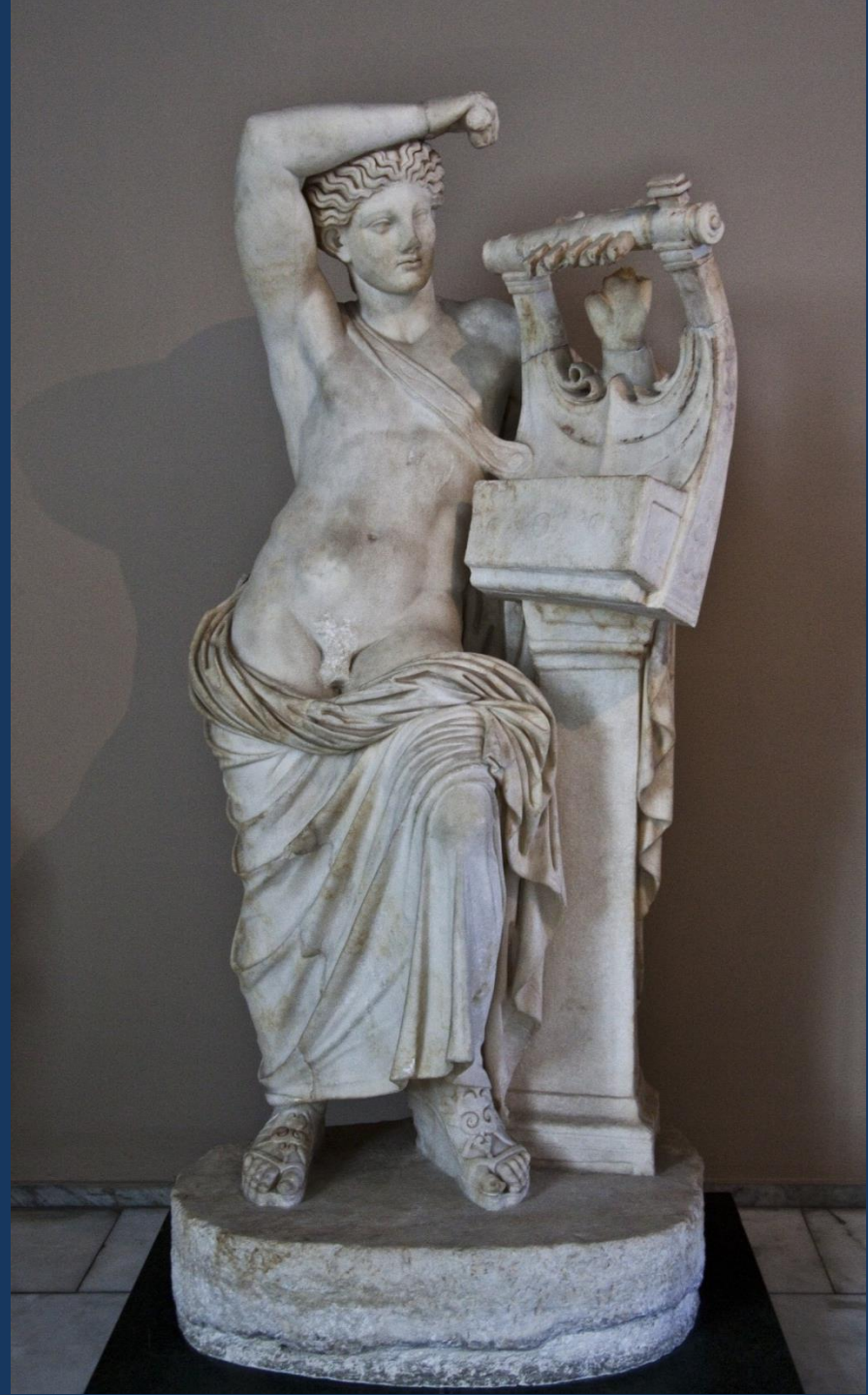
Roman period, second century AD

Height: 155 cm

HER LEFT HAND HOLDS A MASK OF  
HERACLES



*Statue of Apollo*  
Marble  
Roman period, second century AD  
Height: 177 cm



TRACES OF REDDISH BROWN AND BLUE PAINT

# SCULPTURE

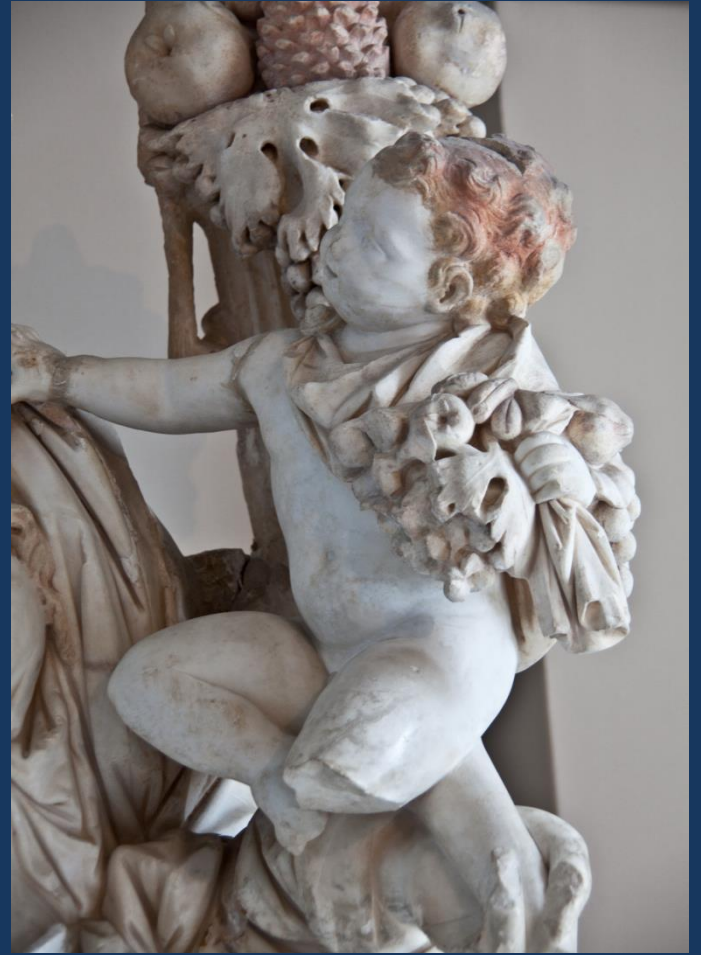
THE POLITICAL AND MILITARY  
IDEOLOGY OF ROMAN  
IMPERIAL CLASS

PORTRAITURE AND RELIEF ARE  
TWO IMPORTANT CATEGORIES



*Statue of Tyche*  
Marble  
Roman period  
second century AD  
Height: 265 cm

*Details*





# ROMAN PORTRAIT SCULPTURES LIKENESS THEY SHOWED TO THE SUBJECT

FOR THE EMPERORS, SOLDIER-EMPERORS OR  
GENERALS



*Bust of the Emperor Marcus Aurelius*  
(161-180 AD)

Marble

Roman period, second century AD

Height: 92 cm



# MY SIXTH SCULPTURE



*Female Figure* 裸女

Marble

1981

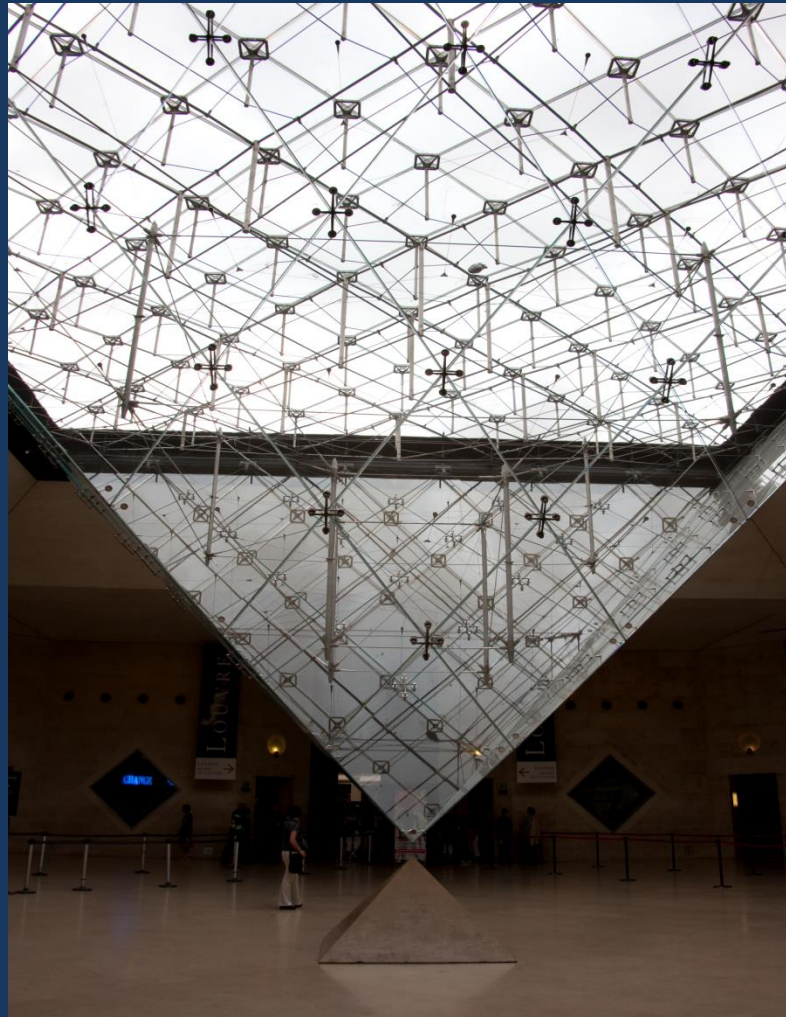
62 (H) x 34 x 26 cm

THE IMPACT

THE LOUVRE MUSEUM

PARIS, FRANCE

# THE LOUVRE MUSEUM



**MOST VISITED MUSEUM IN THE WORLD**  
**8,500,000 VISITORS IN 2009**

# CYCLADIC ART

THE CYCLADES  
A GREEK ISLAND GROUP  
IN  
THE AEGEAN SEA

3000 – 2000 BC



*Head of figurine*

Marble

Early Cycladic, 2700-2300 BC

Height: 18 cm



## MYCENAEAN GREECE

Ca. 1600 BC – ca. 1100 BC

*Group of three figurines*

Terracotta

Late Mycenaean, 13th century BC

Height: 13 cm, width: 8 cm

THREE-FIGURE COMPOSITIONS ARE  
UNUSUAL

# GEOMETRIC PERIOD

9TH – 8TH CENTURY BC

*Armour-bearer*

Bronze

Geometric period, about 700 BC

Height: 12.1 cm



ONE OF THE MOST PRECIOUS EX-VOTOS OF THE GEOMETRIC PERIOD



## ARCHAIC PERIOD

620 - 480 BC

*Kore from the Cheramydes group*

Marble

Archaic period, 570-560 BC

Height: 1.92 m

THE TEMPLE OF HERA, SAMOS

ONE OF THE OLDEST ROBED YOUNG GIRL OR KORE

# CLASSICAL PERIOD

## 480 - 325 BC

END OF PERSIAN WARS  
TO  
TIME OF ALEXANDER THE GREAT

BEAUTIFUL, IDEALISTIC, ETERNAL BEAUTY, YOUTH  
WITH  
COMPLETE HARMONY AND BALANCE

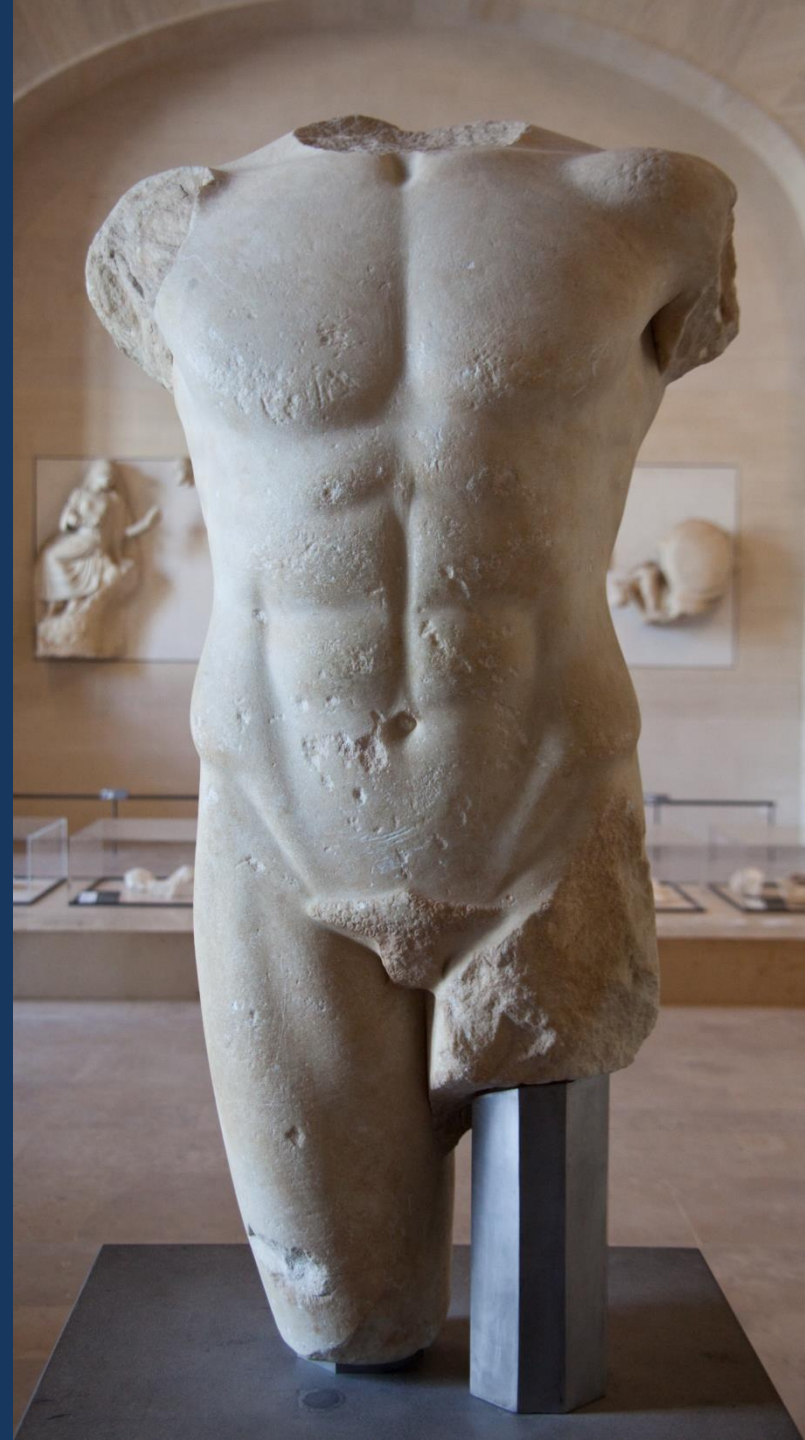
*Male torso*

Marble

Classical period, about 480-470 BC

Height: 1.32 m

CONTRAPPOSTO OF MOVING BODIES





*Venus de Milo*

FAMOUS SCULPTURE IN THE LOUVRE  
DISCOVERED IN 1820 IN MILO IN THE CYCLADES, GREECE

# HELLENISTIC PERIOD

323 - 31 BC

DEATH OF ALEXANDER THE GREAT  
TO  
THE PRINCIPATE OF AUGUSTUS

*Venus de Milo*

Marble

Late Hellenistic period, about 100 BC

Height: 2.02 m



THE HALF-NAKED GODDESS OF LOVE, VENUS



TWO BASIC FEATURES  
OF  
HELLENISTIC ART

NATURALISM  
REALISM

VIOLENT MOVEMENTS  
STORMY PASSION

*Head*



*Fighting warrior, the 'Borghese gladiator'*  
About 100 BC  
Height: 1.99 m

*Head of a young man, the 'de Benevent'*  
Bronze, copper inlays for the lips  
About 50 BC  
Height: 33 cm





*The wing victory of Samothrace*

Parian marble

Hellenistic period, about 190 BC

Height: 3.28 m (with boat)

THE WINGED GODDESS OF VICTORY, THE NIKE,  
STANDING ON THE PROW OF A BOAT, BRACED  
AGAINST THE STRONG WIND

*Side view*



TRANSPARENT DRAPERY

# ROMAN PERIOD

COPIES OF CLASSICAL WORKS  
ORIGINALS, PORTRAITS

*Funerary statue of honour of Marcellus*  
(Nephew and first son-in-law of Augustus, died 23 BC)

Greek marble

Height: 1.8 m

SIGNED BY A GREEK SCULPTOR

CLEOMENES THE ATHENIAN



*Athena, 'the Pallas of Velletri'*

Marble

Roman Imperial period, the 1st century

AD?

Height: 3.05 m



HUGE STATUE OF ATHENA  
COPY ON A BRONZE EFFIGY

*The emperor Trajan*  
(98 -117 AD)  
Marble  
Height: 2.04 m



*Female figure in motion: a Niobid?*

Marble

Roman Imperial period, 1st - 2nd century

AD

Height: 84 cm



FLOWING STYLE OF THE LATE FIFTH  
CENTURY BC WAS FASHIONABLE BETWEEN  
THE SECOND CENTURY BC AND THE SECOND  
CENTURY AD

*Seated captive*  
Green Breccia marble from Egypt  
1st - 2nd century AD  
Height: 1.63 m



THE PHRYGIAN CAP DATED FROM THE SECOND  
CENTURY AD

THE BODY PROBABLY DATED FROM THE FIRST  
CENTURY AD



*Heracles and Telephus*

Marble

Roman Imperial period, 1st - 2nd century AD

Height: 2.62 m

TELEPHUS WAS THE SON OF HERACLES

*Artemis with a doe, the 'Diana of Versailles'*  
Marble  
Roman Imperial period, 1st - 2nd century AD  
Height: 2 m

SIMILAR TO OTHER ROMAN COPIES IN  
LIBYA (LEPTIS MAGNA) AND TURKEY  
(ANTALYA)

PROBABLY ON A GREEK ORIGINAL FROM  
THE FOURTH CENTURY BC



*Imperial group as Mars and Venus*

Marble

120 - 140 AD

Height: 1.73 m



THE GROUP REFLECTS THE HELLENIZING TASTES OF  
HADRIAN PERIOD



*Minerva*

Gilded onyx and marble

Second century AD

Height: 1.33 m

*Statue of Juno, 'Providence'*  
Second century AD  
Height: 1.98 m



JUNO IS THE WIFE OF JUPITER



*Seated Minerva*

Red porphyry and gilded bronze

Second century AD

17th and 18th centuries (bronze work)

Height: 1.47 m

*Apollo*  
Gilded bronze  
Roman period, 2nd century AD  
Height: 1.94 m

DISCOVERED IN FRANCE IN 1823  
THE LARGE SURVIVING GALLO-ROMAN  
BRONZE OF A DIVINITY

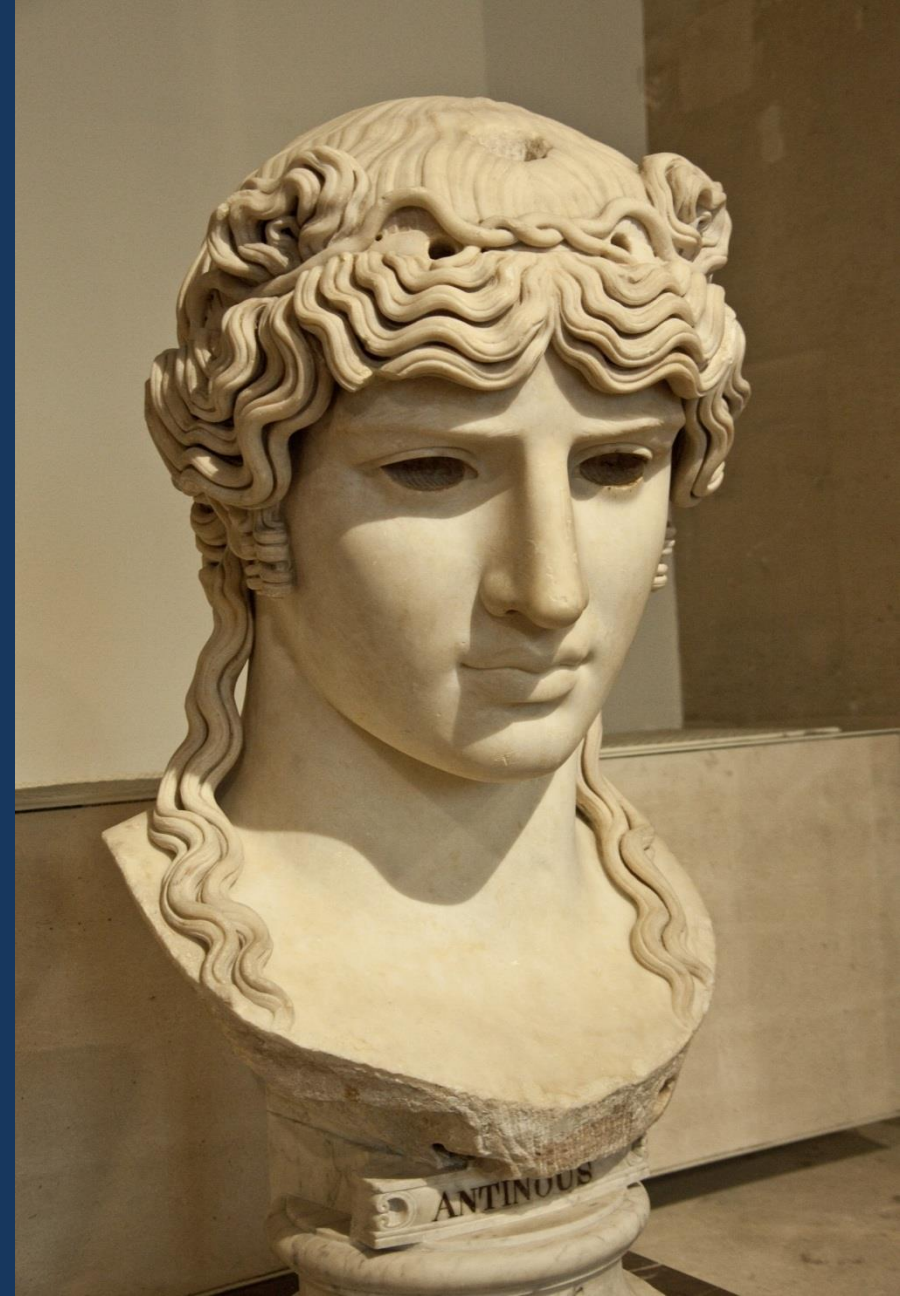




*Thetis*  
Marble

Roman period, 2nd century AD  
Height: 2.11 m

*Antinous Mondragone*  
Marble  
Roman period, about 130 AD  
Height: 95 cm



THIS COLOSSAL BUST IS A POSTHUMOUS PORTRAIT OF THE LOVER OF  
EMPEROR HADRIAN (117-138 AD)



*Hermaphroditos asleep*

Marble

Roman Imperial period, 2nd century AD

Length: 1.69 m, depth: 0.89 m

HERMAPHRODITOS THE SON OF HERMES AND APHRODITE WITH MALE SEXUAL ORGANS  
AND THE CURVES OF A WOMAN

THE MATTRESS PROVIDED BY BERNINI



*Heracles*

Marble

Roman Imperial period, 2nd century AD

Height: 1.8 m



# RENAISSANCE

14TH TO 17TH CENTURY

Michelangelo Buonarroti

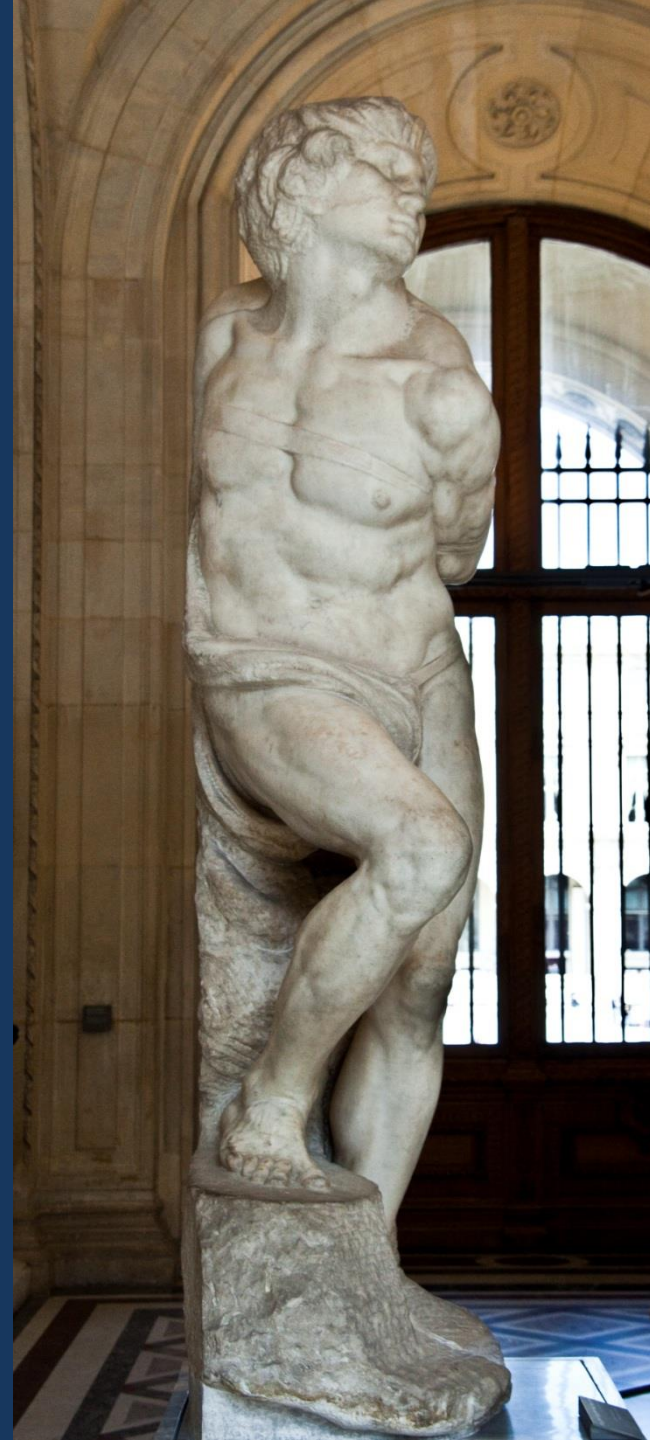
*The slave*

Marble

1513-1515

Height: 2.09 m

UNFINISHED





Benvenuto Cellini  
*The nymph of Fontainebleau*  
Bronze  
1542-43  
Height: 2.05 m, width: 4.09 m



Antoine Coysevox

*Mercury mounted on Pegasus*

Carrara marble

1699-1702

Height: 3.15 m, width: 2.91 m, depth: 1.28 m

GEIGHTEENTH CENTURY ART  
uillaume I Coustou

*Horse restrained by a groom,  
'Horse of Marly'*

Marble

1739-45

Height: 3.4 m, width: 2.84 m,  
depth: 1.27 m





Antonio Canova

*Psyche revived by the kiss of  
love*

Marble  
1793

Height: 1.55 m, 1.68 m, depth:  
1.01 m



# NUMBERS OF PHOTOS

THE NATIONAL ARCHAEOLOGICAL MUSEUM, ATHENS

4 DAYS – 6779 PHOTOS

THE ISTANBUL ARCHAEOLOGICAL MUSEUMS, ISTANBUL

4 DAYS – 6258 PHOTOS

THE LOUVRE, PARIS

7 DAYS – 10127 PHOTOS



VISION – IN UNISON

2021

BRONZE

THE HONG KONG POLYTECHNIC UNIVERSITY

# LATEST VISIT ROME



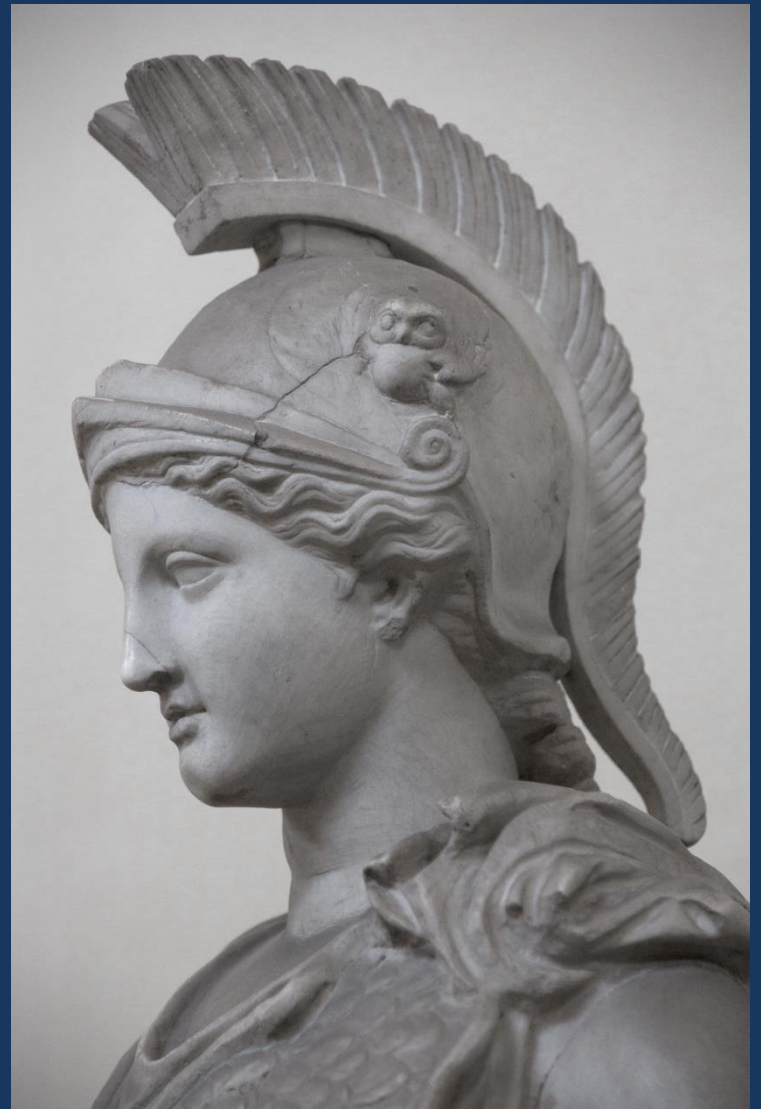
# THE MEDITERRANEAN IN CA. 6<sup>TH</sup> CENTURY BC

**RED** – GREEK CITIES; **YELLOW** – PHOENICIAN; **GREY** – OTHER CITIES



ANCIENT GREEK TEMPLE  
PAESTUM NEAR NAPLES ITALY

# VATICAN MUSEUM ROME



# LAOCOON AND HIS SONS

## HELLENISTIC





A DIVINITY  
ROMAN  
COPY

AUGUSTUS  
OF PRIMA  
PORTA

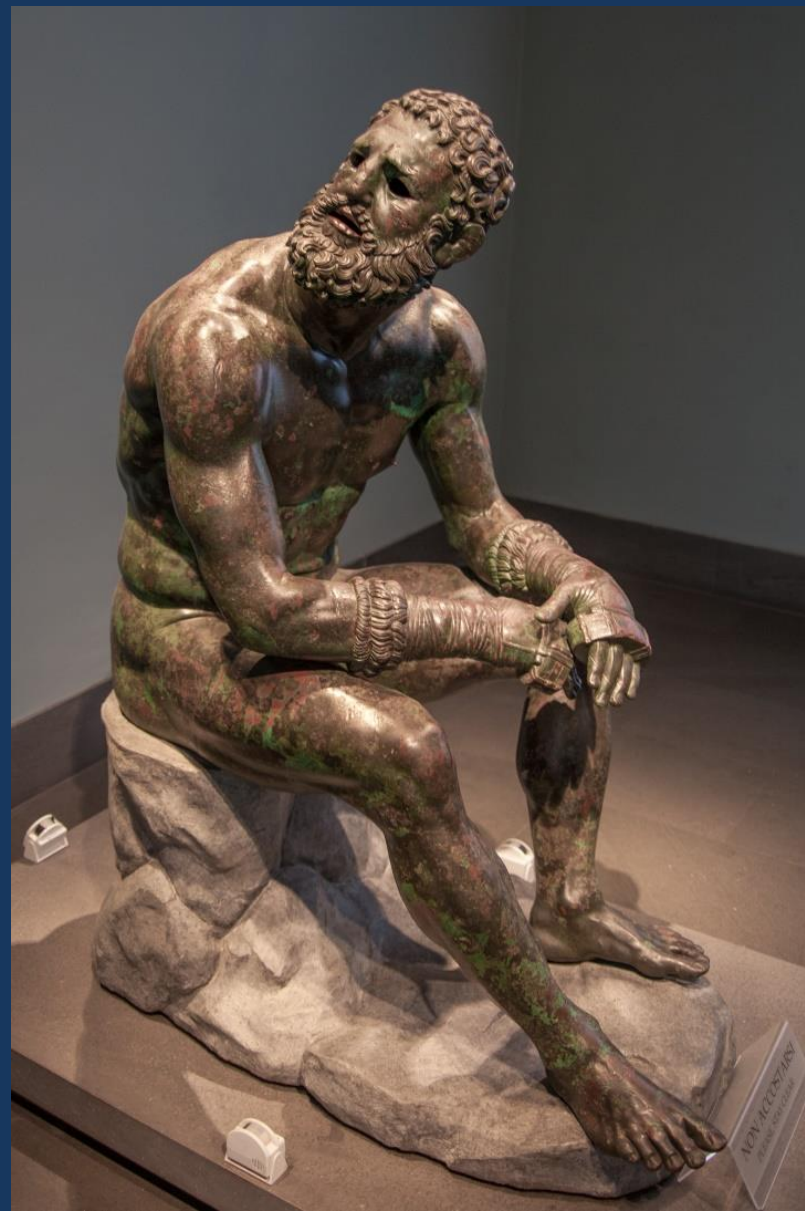


76  
MUNIF. FIL. IX. P.M.  
AN. XIII

MUSEUM  
NAZIONALE  
ROMANO

PUGILE

HELLENISTIC  
PRINCE



DISCOBOLO LANCELLOTTI  
ROMAN COPY





THANK YOU