

ANCIENT CHINESE WOMEN

BY

PROFESSOR NORMAN W. M. KO

高華文教授

FHKIE
HKIE GOLD MEDAL

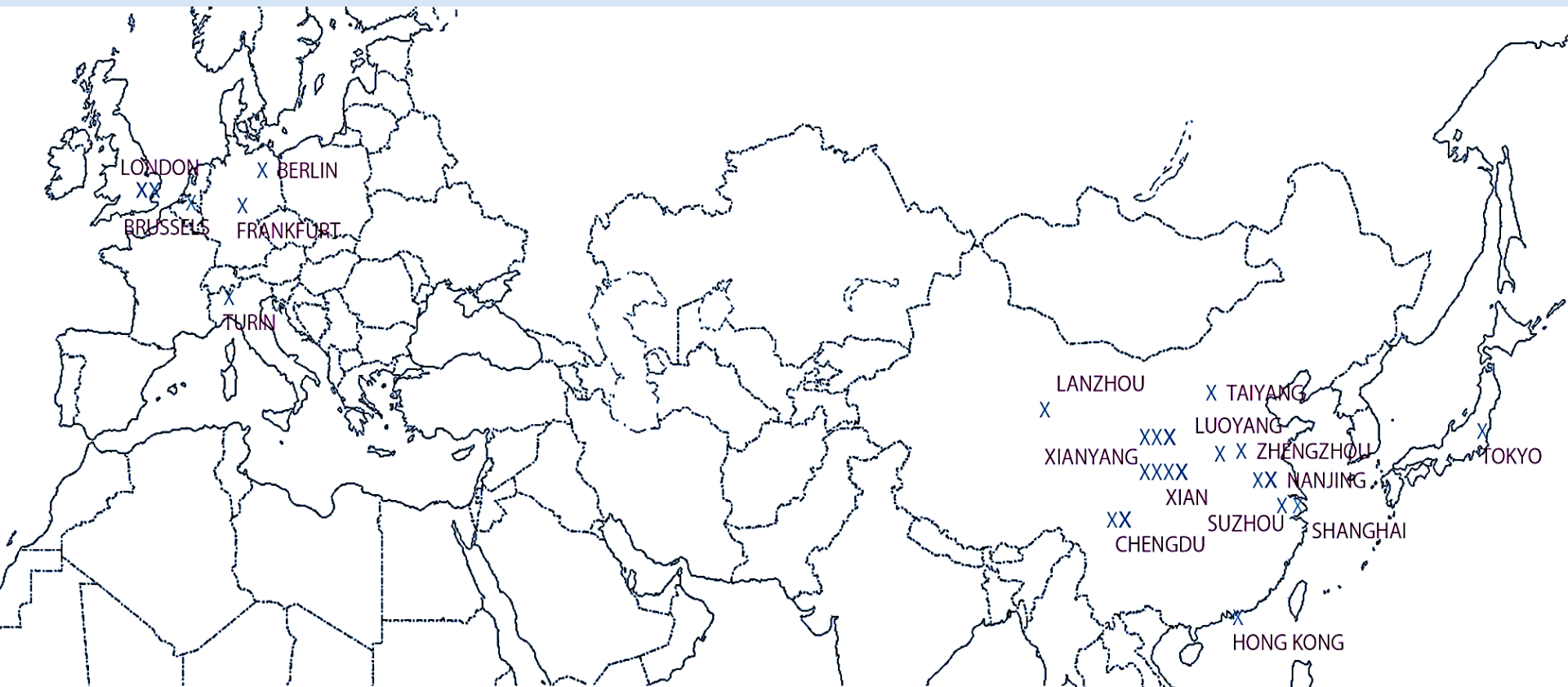
B.Sc. (HON)(HKU), PH.D.(SOTON), D. SC.(HKU), D. SC.(SOTON)

HONORARY FELLOW(OPEN UNIVERSITY)
HONORARY FELLOW(HKIOA)
HONORARY FELLOW(HKU)
UNIVERSITY FELLOW(POLYU)

FELLOW, THE ROYAL SOCIETY OF ART, UNITED KINGDOM

中国美術家協會會員
MEMBER, THE CHINESE ARTISTS ASSOCIATION

MUSEUMS VISITED



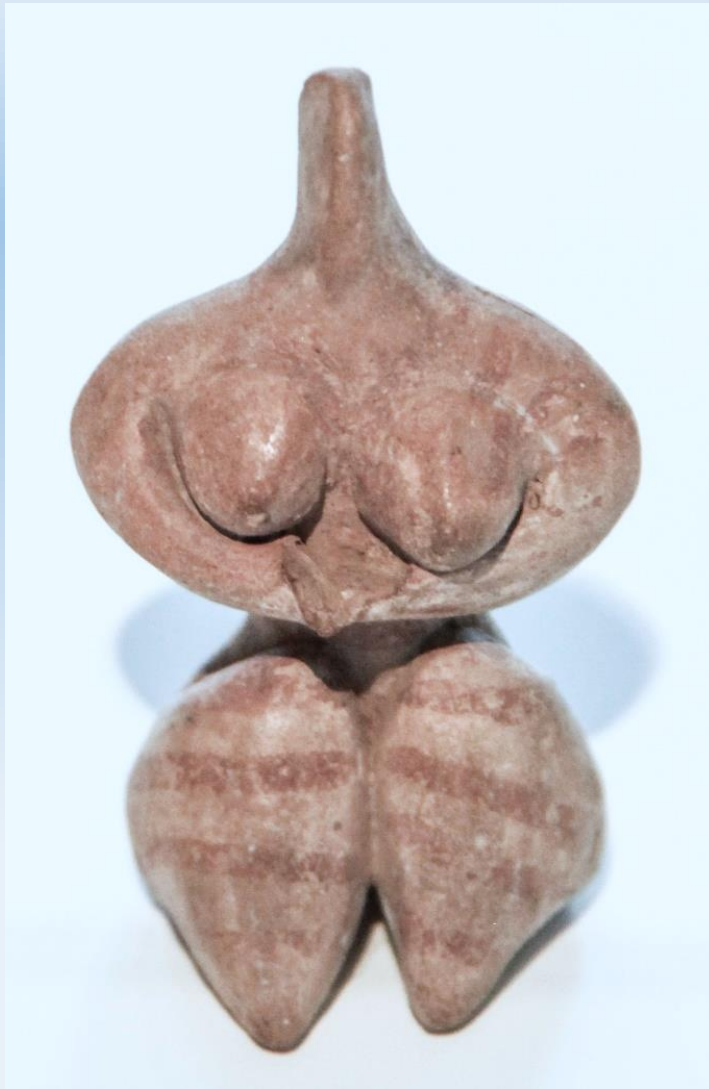
CHINA

THE ART MUSEUM IN XIANYANG (XIANYANG); THE GANSU MUSEUM (LANZHOU); THE HANYANGLING MUSEUM (XIANYANG); THE HENAN MUSEUM (ZHENGZHOU); THE JINSHA SITE MUSEUM (CHENGDU); THE LUOYANG MUSEUM (LUOYANG); THE MAOLING MUSEUM (XIANYANG); THE NANJING MUNICIPAL MUSEUM (NANJING); THE NANJING MUSEUM (NANJING); THE QIANLING MUSEUM (XIANYANG); THE SANXINGDUI MUSEUM (GUANGHAN); THE SHAANXI HISTORY MUSEUM (XIAN); THE SHANGHAI MUSEUM (SHANGHAI); THE SHANXI MUSEUM (TAIYUAN); THE SUZHOU MUSEUM (SUZHOU); THE TERRACOTTA MUSEUM (XIAN); THE UNIVERSITY MUSEUM AND ART GALLERY (HONG KONG); THE XIAN MUSEUM (XIAN) AND THE ZHAOLING MUSEUM (XIANYANG).

OTHER COUNTRIES

THE ART INSTITUTE OF CHICAGO (CHICAGO); THE BRITISH MUSEUM (LONDON); THE LIEBIGEHAUS (FRANKFURT); THE MUSEUM OF ORIENTAL ART (TURIN); THE PERGAMON MUSEUM (BERLIN); THE ROYAL MUSEUM OF FINE ARTS OF BELGIUM (BRUSSELS); THE TOKYO NATIONAL MUSEUM (TOKYO) AND THE VICTORIA AND ALBERT MUSEUM (LONDON).

ANCIENT WOMEN IN THE NEAR EAST



FEMALE FIGURINE

PAINTED CLAY 6-5TH MILLENNIUM B.C. TELL HALAF IRAQ
THE PERGAMON MUSEUM BERLIN GERMANY



IVORY FIGURINE

EARLY-MIDDLE PREDYNASTIC EGYPT 3900-3300 B.C.
THE BRITISH MUSEUM LONDON ENGLAND

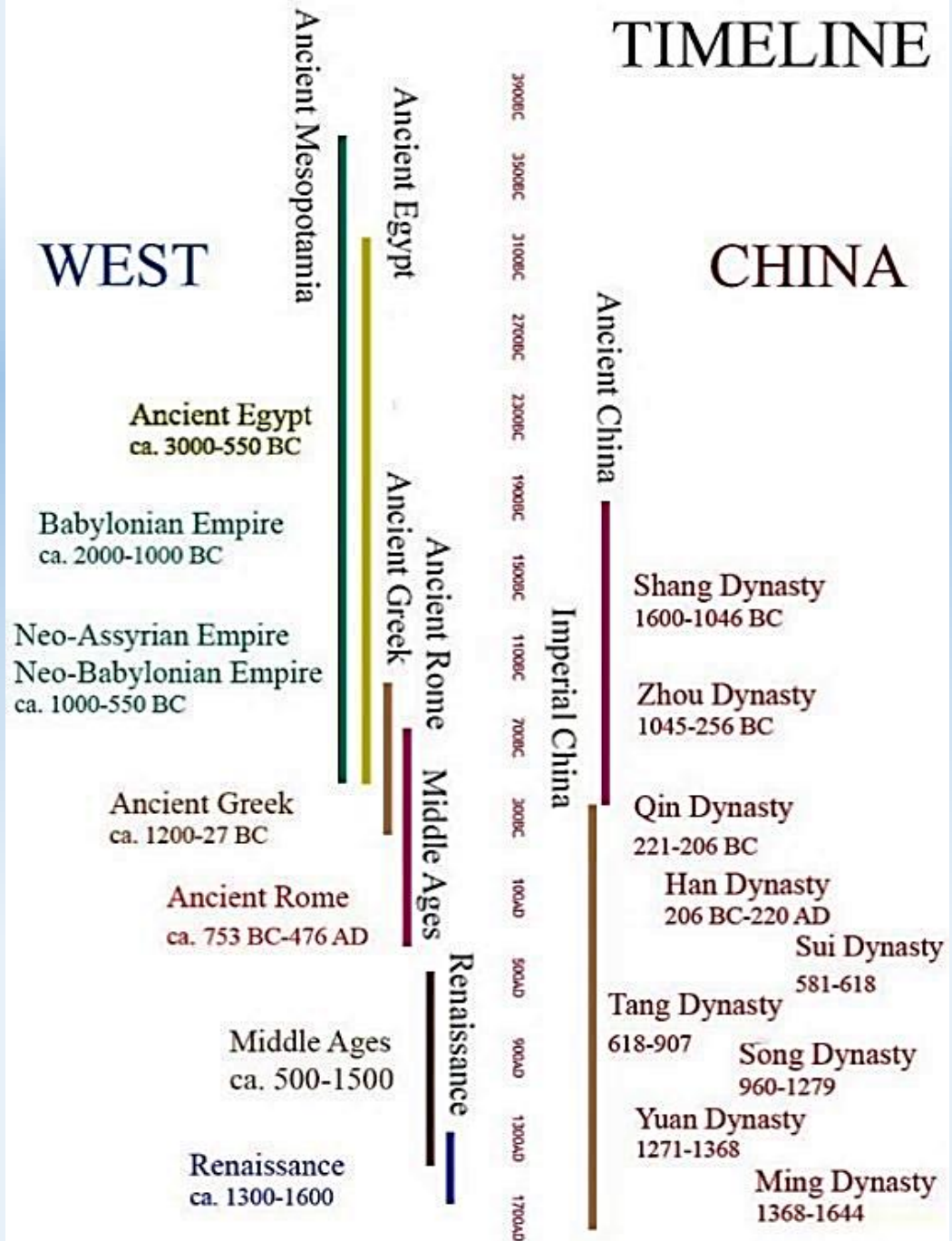


THUTMOSE: *NEFERTITI*

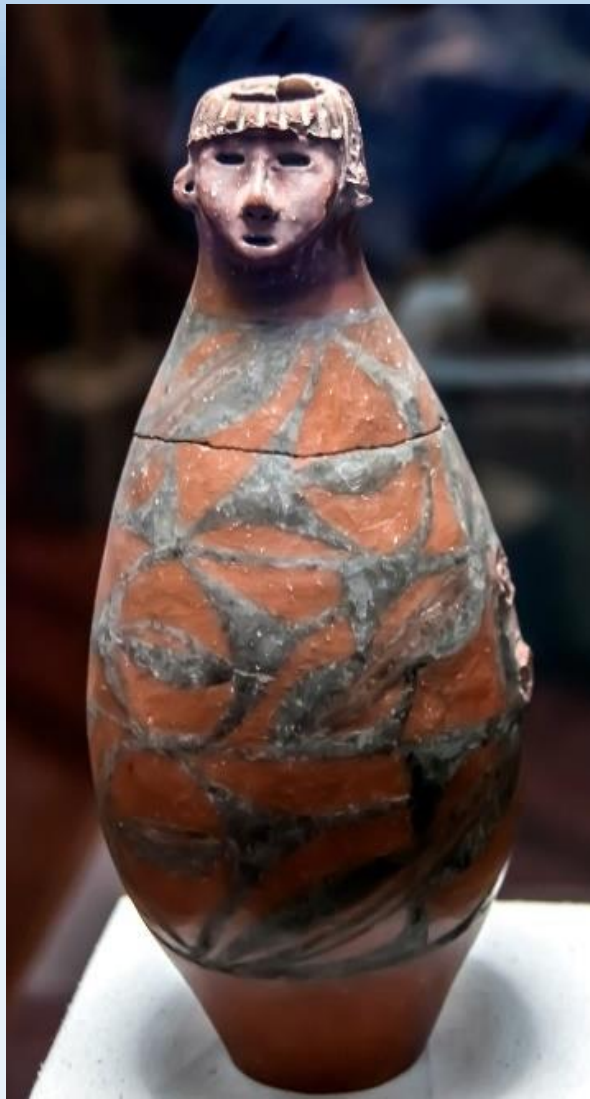
PAINTED LIMESTONE c. 1353-1335 B.C. EGYPT

THE NEUES MUSEUM BERLIN GERMANY

TIMELINES OF CHINA AND THE WEST



CHINA
THE NEOLITHIC AGE 新石器時代
c. 8500 – c. 2070 B.C.



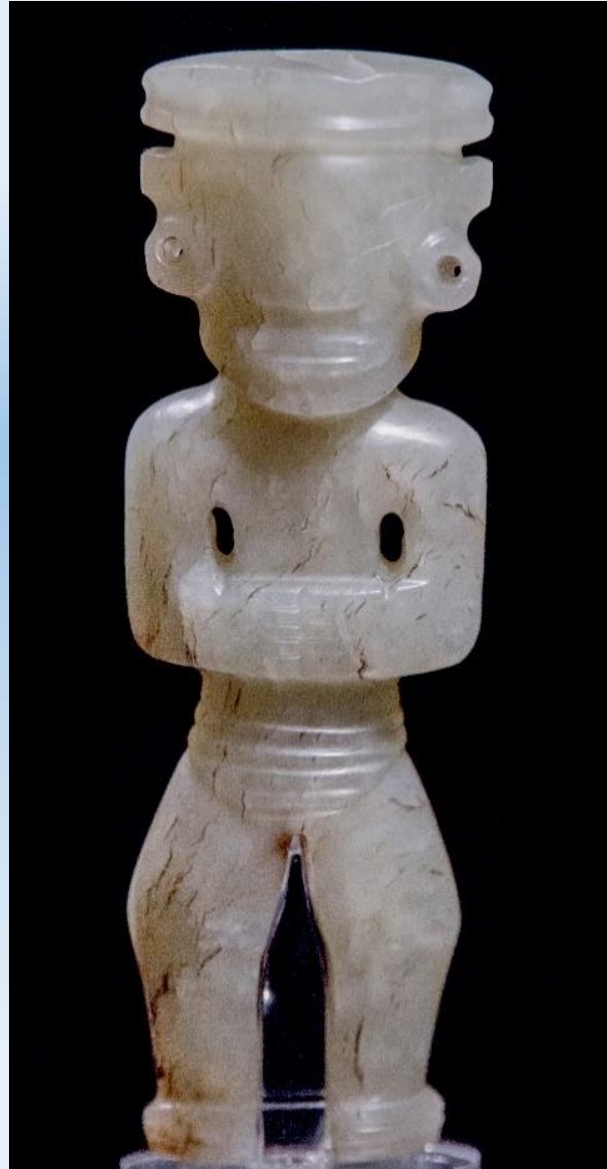
THE GANSU MUSEUM
LANZHOU CHINA

甘肅博物館 蘭州 中國



JADE ACCESSORY
THE NANJING MUSEUM NANJING CHINA

人形飾物
南京博物院 南京 中國



THE SHANGHAI MUSEUM SHANGHAI CHINA

神人
上海博物館 上海 中國

XIA DYNASTY 夏朝

c. 1600 – c. 1046 B.C.



BRONZE JUE WITH NIPPLE PATTERN

THE LUOYANG MUSEUM LUOYANG CHINA

乳釘紋銅爵

洛陽博物館 洛陽 中國

ONE OF THE EARLIEST BRONZE WARE FOUND IN CHINA

SHANG DYNASTY 商朝

c. 1600 – c. 1046 B.C.



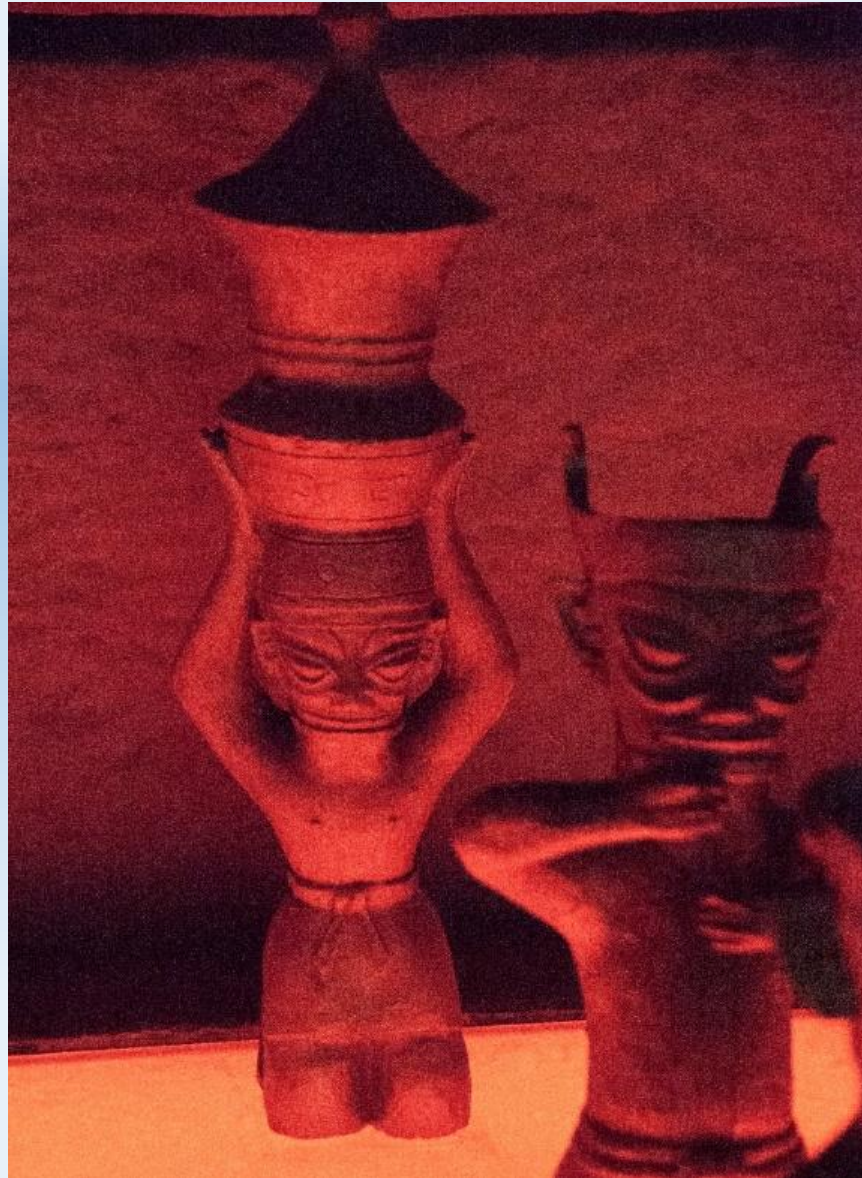
JADE KNEELING PERSON SHAPED OF PEI PENDANT
THE HENAN MUSEUM ZHENGZHOU CHINA

跪坐人形玉珮
河南博物院 鄭州 中國



THE SANXINGDUI MUSEUM GUANGHAN CHINA

三星堆博物館 廣漢 中國



THE SANXINGDUI MUSEUM GUANGHAN CHINA

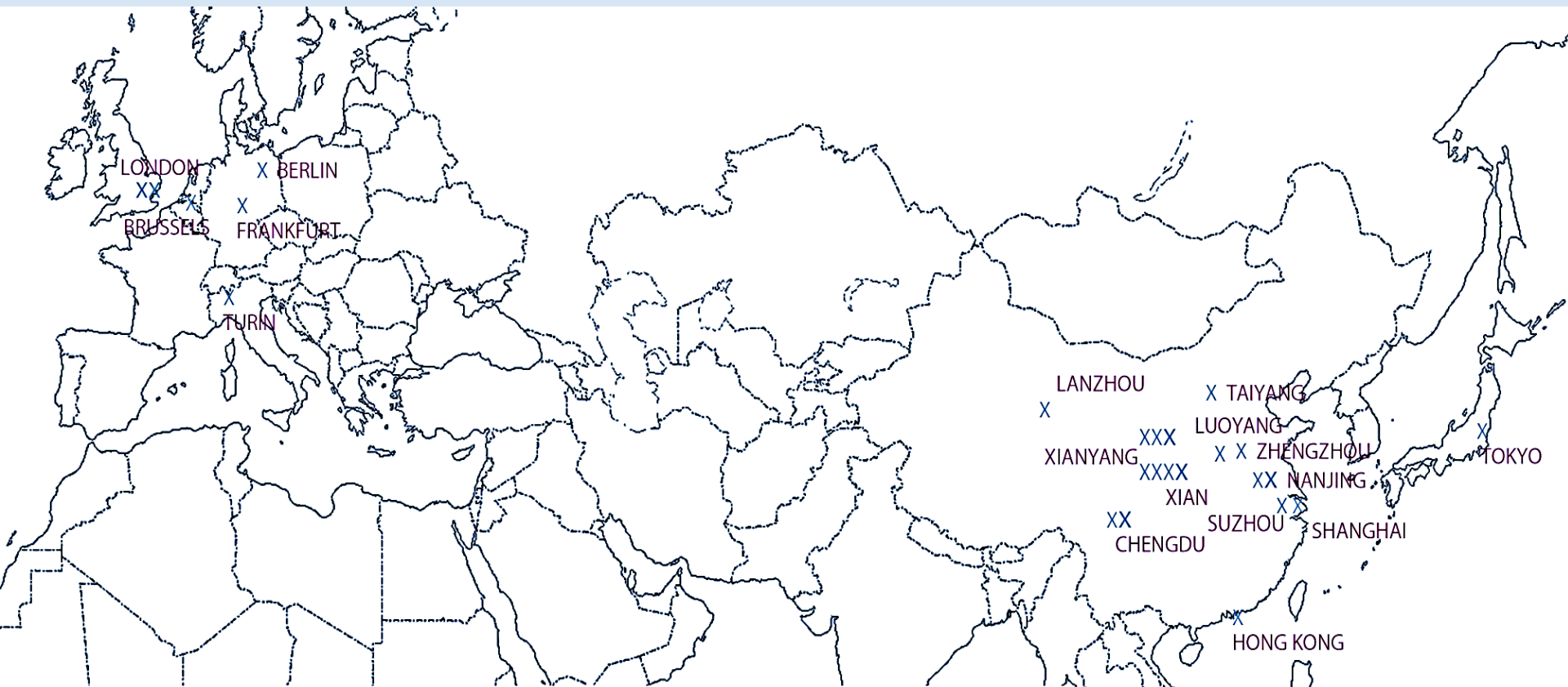
三星堆博物館 廣漢 中國



THE SANXINGDUI MUSEUM GUANGHAN CHINA

三星堆博物館 廣漢 中國

MUSEUMS VISITED



CHINA

THE ART MUSEUM IN XIANYANG (XIANYANG); THE GANSU MUSEUM (LANZHOU); THE HANYANGLING MUSEUM (XIANYANG); THE HENAN MUSEUM (ZHENGZHOU); THE JINSHA SITE MUSEUM (CHENGDU); THE LUOYANG MUSEUM (LUOYANG); THE MAOLING MUSEUM (XIANYANG); THE NANJING MUNICIPAL MUSEUM (NANJING); THE NANJING MUSEUM (NANJING); THE QIANLING MUSEUM (XIANYANG); THE SANXINGDUI MUSEUM (GUANGHAN); THE SHAANXI HISTORY MUSEUM (XIAN); THE SHANGHAI MUSEUM (SHANGHAI); THE SHANXI MUSEUM (TAIYUAN); THE SUZHOU MUSEUM (SUZHOU); THE TERRACOTTA MUSEUM (XIAN); THE UNIVERSITY MUSEUM AND ART GALLERY (HONG KONG); THE XIAN MUSEUM (XIAN) AND THE ZHAOLING MUSEUM (XIANYANG).

OTHER COUNTRIES

THE ART INSTITUTE OF CHICAGO (CHICAGO); THE BRITISH MUSEUM (LONDON); THE LIEBIGEHAUS (FRANKFURT); THE MUSEUM OF ORIENTAL ART (TURIN); THE PERGAMON MUSEUM (BERLIN); THE ROYAL MUSEUM OF FINE ARTS OF BELGIUM (BRUSSELS); THE TOKYO NATIONAL MUSEUM (TOKYO) AND THE VICTORIA AND ALBERT MUSEUM (LONDON).

SANXINGDUI CULTURE

三星堆

12TH – 11TH CENTURIES B.C.



BRONZE WITH GOLD MASK

THE SANXINGDUI MUSEUM GUANGHAN CHINA

三星堆博物館 廣漢 中國

STANDING HUMAN STATUE

THE SANXINGDUI MUSEUM GUANGHAN CHINA

2.62 M HIGH

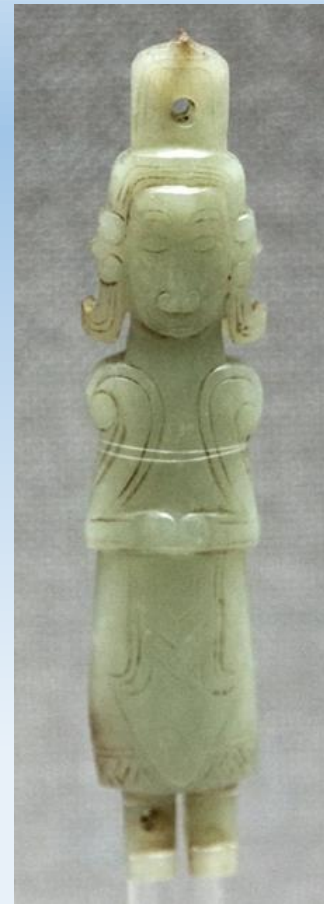
SHAPE AND MANNER ARE UNIQUE AMONG SHANG AND ZHOU DYNASTIES

三星堆博物館 廣漢 中國



ZHOU DYNASTY 周朝

c. 1046 – 256 B.C.



THE SHANXI MUSEUM TAIYUAN CHINA

五人
山西博物院 太原 中國

QIN DYNASTY 秦朝

221 – 206 B.C.



THE TERRACOTTA ARMY XIAN CHINA

兵馬俑 西安 中國



STANDING ARCHER
THE TERRACOTTA ARMY XIAN CHINA

立射俑
兵馬俑 西安 中國

HAN DYNASTY 漢朝

206 B.C. – 280 A.D.

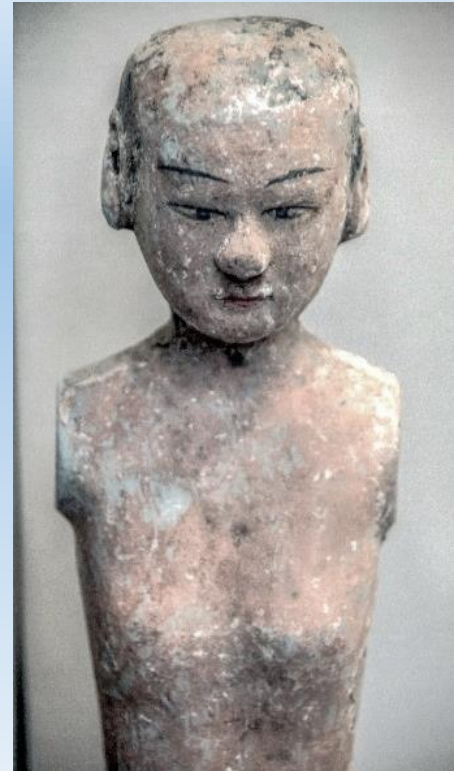


THE ART MUSEUM IN XIANYANG CHINA

咸陽博物館 咸陽 中國



THE MUSEUM OF ORIENTAL ART TURIN ITALY



WOMAN
EARTHENWARE PAINTED WITH COLOURED PIGMENT
SHAANXI PROVINCE

西漢女俑

THE VICTORIA AND ALBERT MUSEUM LONDON
ENGLAND



CLOTHED POTTERY FIGURINES
(THE CLOTHES ARE REPRODUCED)
THE HANYANGLING MUSEUM XIANYANG CHINA

着衣式陶俑
(衣服為複製)
漢陽陵博物館 咸陽 中國

JADE FIGURINE PENDENT
THE ART MUSEUM IN XIANYANG XIANYANG CHINA

玉人墜飾
咸陽博物館 咸陽 中國



WOMAN OFFERING FOOD
THE SHANGHAI MUSEUM SHANGHAI CHINA

獻食人
上海博物館 上海 中國



FIGURE IN COURT DRESS

THE MUSEUM OF ORIENTAL ART TURIN ITALY



LADY-IN-WAITING
SHAANXI

THE MUSEUM OF ORIENTAL ART TURIN ITALY



FIGURE IN COURT DRESS
SHAANXI (?)

THE MUSEUM OF ORIENTAL ART TURIN ITALY

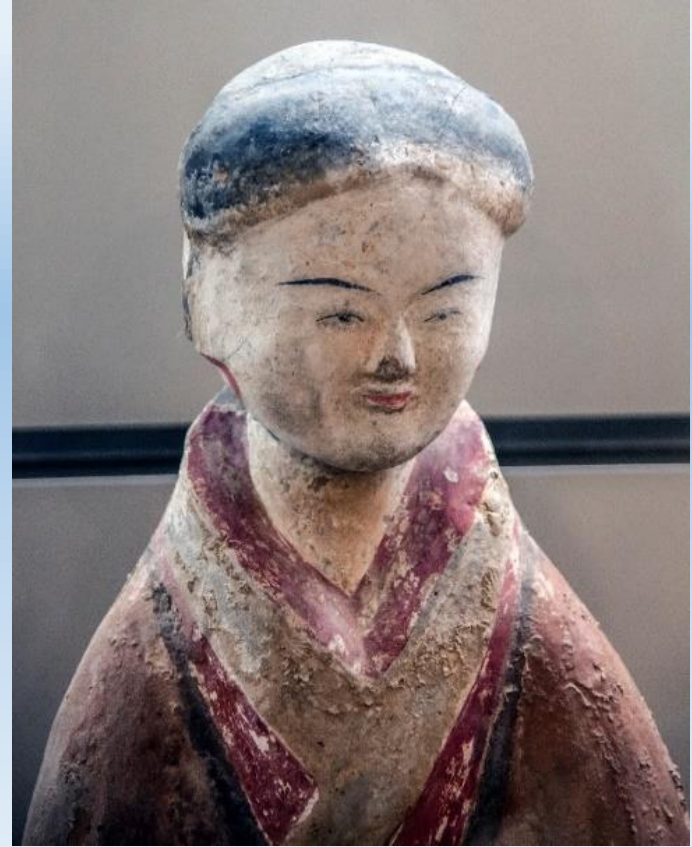


FIGURE IN COURT DRESS
SHAANXI (?)

THE MUSEUM OF ORIENTAL ART TURIN ITALY

THE TOKYO NATIONAL MUSEUM TOKYO JAPAN



POTTERY FEMALE FIGURE
THE XIAN MUSEUM XIAN CHINA

女俑
西安博物院 西安 中國

FIGURE IN COURT DRESS
SHAANXI (?)

THE MUSEUM OF ORIENTAL ART TURIN ITALY





PAINTED SQUATTING FEMALE FIGURE
THE SHAANXI HISTORY MUSEUM XIAN CHINA

彩繪踞坐女俑
陝西歷史博物館 西安 中國



THE CHONGQING MUSEUM CHONGQING CHINA

重慶博物館 重慶 中國



WOMAN

西漢 彩繪陶女俑

THE VICTORIA AND ALBERT MUSEUM LONDON ENGLAND



POTTERY EQUESTRIAN FIGURINE
THE HENAN MUSEUM ZHENGZHOU CHINA

騎馬陶俑
河南博物院 鄭州 中國



FEMALE EQUESTRIAN
THE SHAANXI HISTORY MUSEUM XI'AN CHINA

女騎俑
陝西歷史博物館 西安 中國

JIN DYNASTY 晉朝
TO
SOUTHERN AND NORTHERN DYNASTIES 南北朝
265 – 589 A.D.



POTTERY FIGURINE
SOUTHERN DYNASTY
THE NANJING MUSEUM NANJING
CHINA

陶女俑 南朝
南京博物院 南京 中國



POTTERY FEMALE FIGURINE
SOUTHERN QI
THE NANJING MUSEUM NANJING
CHINA

陶仕女俑 南齊
南京博物院 南京 中國



POTTERY FEMALE FIGURINE
JIN DYNASTY
THE NANJING MUSEUM NANJING CHINA

陶女俑
東晉
南京博物院 南京 中國

PART OF A POTTERY FIGURINE
SOUTHERN DYNASTY
THE NANJING MUSEUM NANJING CHINA

陶女俑殘件
南朝
南京博物院 南京 中國





POTTERY FIGURINE

JIN DYNASTY

THE NANJING MUSEUM NANJING
CHINA

陶女俑

東晉

南京博物院 南京 中國



SOAPSTONE SCULPTURE

SOUTHERN DYNASTIES

THE NANJING MUSEUM NANJING CHINA

滑石雕像

南朝

南京博物院 南京 中國

SUI DYNASTY 隋朝

581 – 618 A.D.



THE JUBELPARK MUSEUM BRUSSELS
BELGIUM

*WHITE GLAZED POTTERY FIGURINE OF WOMAN
PLAYING PIPA (LUTE)*

THE SHANGHAI MUSEUM SHANGHAI CHINA

白釉陶彈琵琶女俑
上海博物館 上海 中國





PAINTED POTTERY DANCER
THE LUOYANG MUSEUM LUOYANG CHINA

彩繪陶舞俑
洛陽博物館 洛陽 中國



FEMALE ATTENDANT FIGURINE
NORTHERN QI DYNASTY
THE SHANXI MUSEUM TAIYUAN CHINA

女侍俑
北齊
山西博物館 太原 中國

GLAZED 釉



*WHITE GLAZED POTTERY
FIGURINE OF STANDING LADY
THE SHANGHAI MUSEUM
SHANGHAI CHINA*

白釉陶女立俑
上海博物館 上海 中國



*WHITE GLAZED POTTERY FIGURINE
OF WOMAN HOLDING A JAR
THE SHANGHAI MUSEUM
SHANGHAI CHINA*

白釉陶捧罐女俑
上海博物館 上海 中國



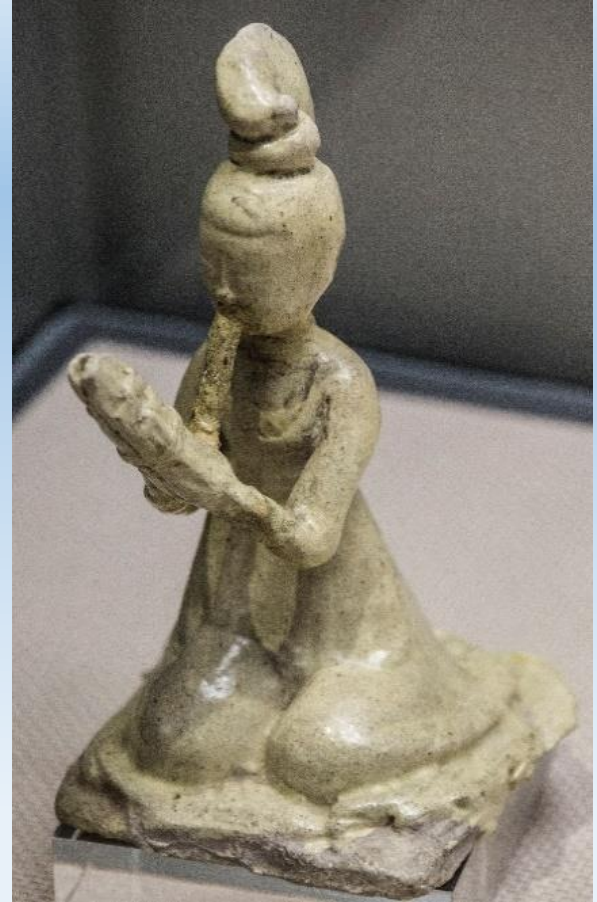
WHITE GLAZED POTTERY FIGURINE OF WOMAN PLAYING MUSICAL INSTRUMENT
THE SHANGHAI MUSEUM SHANGHAI CHINA

白釉陶奏樂女俑
上海博物館 上海 中國



BLUE GLAZED FEMALE FIGURINE WITH KNIFE-SHAPED BUN
THE LUOYANG MUSEUM LUOYANG CHINA

青釉單刀髻女俑
洛陽博物館 洛陽 中國



YELLOW-GLAZED POTTERY DANCER
THE XIAN MUSEUM XIAN CHINA

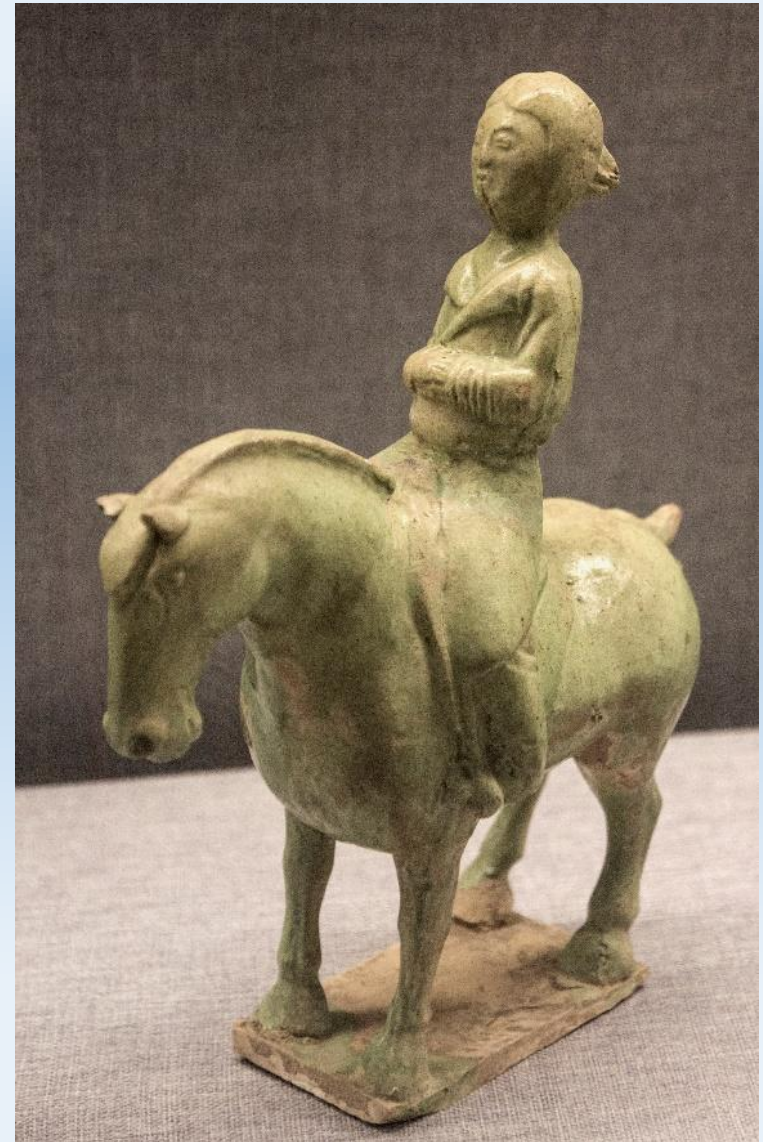
黃釉樂舞女俑
西安博物院 西安 中國



THE JUBELPARK MUSEUM BRUSSELS BELGIUM



THE JUBELPARK MUSEUM BRUSSELS BELGIUM



THE LUOYANG MUSEUM LUOYANG CHINA

洛陽博物館 洛陽 中國

TANG DYNASTY 唐朝

618 – 907 A.D.



PAINTING 繪畫

THE GANSU PROVINCIAL MUSEUM LANZHOU CHINA

甘肅省博物館 蘭州 中國



THE GANSU PROVINCIAL MUSEUM LANZHOU CHINA

甘肅省博物館 蘭州 中國

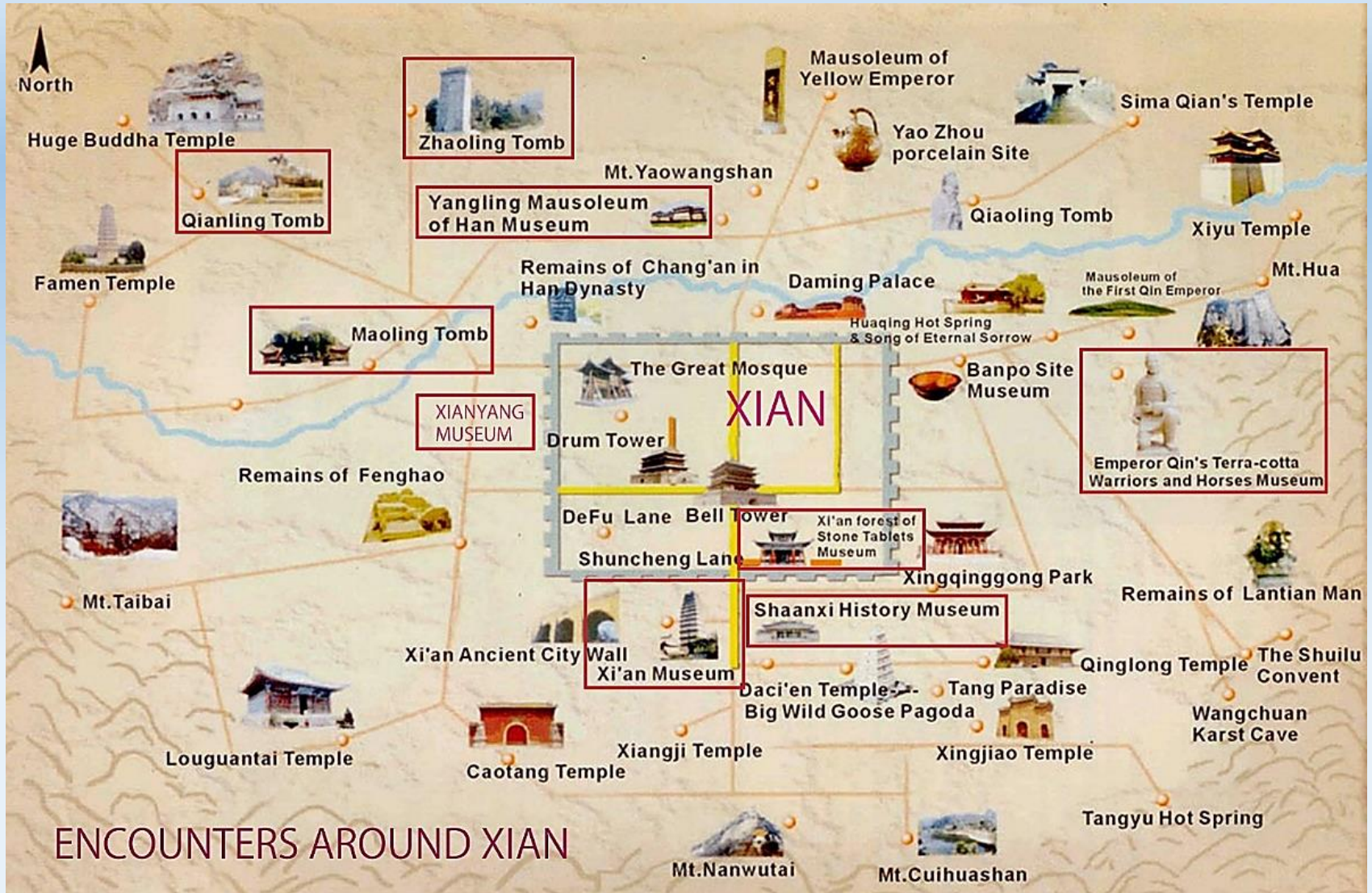




THE GANSU PROVINCIAL MUSEUM LANZHOU CHINA

甘肅省博物館 蘭州 中國

AROUND XIAN



TANG DYNASTY TOMB MURALS 唐墓壁畫



THE ZHAOLING MUSEUM SHAANXI
CHINA

昭陵博物館 陝西 中國



*THE MUSICIANS PLAYING DIFFERENT
MUSICAL INSTRUMENTS*
THE ZHAOLING MUSEUM SHAANXI CHINA

樂伎圖
昭陵博物館 陝西 中國



THE QIANLING MUSEUM SHAANXI
CHINA

觀鳥捕蟬圖
乾陵博物館 陝西 中國



*THE MUSICIANS PLAYING DIFFERENT
MUSICAL INSTRUMENTS*
THE ZHAOLING MUSEUM SHAANXI
CHINA

樂伎圖
昭陵博物館 陝西 中國

PAINTED LADY 彩繪女俑



PAINTED 彩繪



PAINTED POTTERY LADY
THE XIAN MUSEUM XIAN CHINA

彩繪仕女俑
西安博物院 西安 中國



PAINED POTTERY LADY
THE XIAN MUSEUM XIAN CHINA

彩繪仕女俑
西安博物院 西安 中國



PAINED POTTERY FEMALE FIGURE
THE SHAANXI HISTORY MUSEUM XIAN CHINA

彩繪女立俑
陝西歷史博物館 西安 中國





THE MUSEUM OF ORIENTAL ART TURIN ITALY



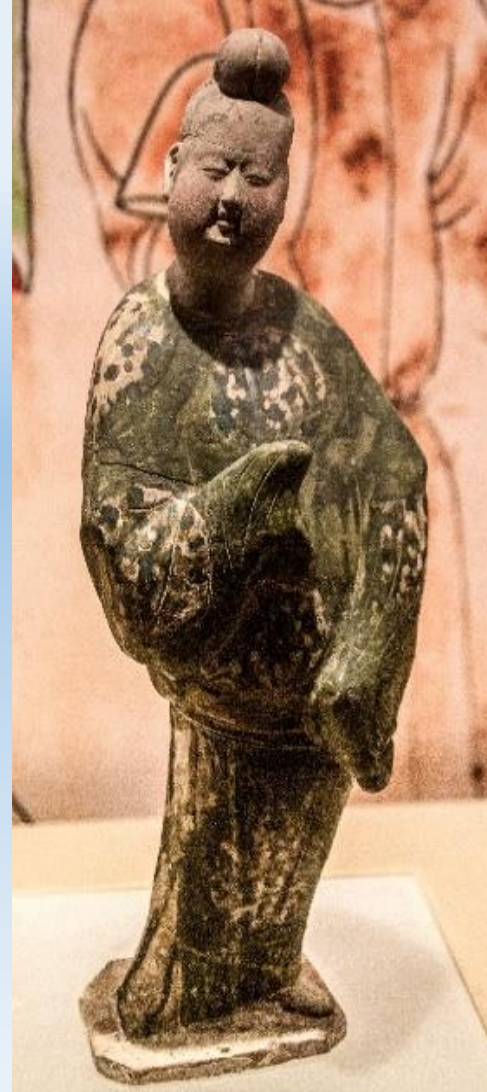
*PAINTED FEMALE FIGURE
HOLDING A MIRROR*
THE SHAANXI HISTORY MUSEUM
XIAN CHINA

彩繪持鏡女俑
陝西歷史博物館 西安 中國



LADY, COLOURED POTTERY
THE SHANGHAI MUSEUM
SHANGHAI CHINA

陶仕女彩繪俑
上海博物館 上海 中國



*TRI-COLORED FEMALE FIGURE WITH
MALE GARMENT*
THE SHAANXI HISTORY MUSEUM XIAN
CHINA

三彩男裝女俑
陝西歷史博物館 西安 中國

*COLOURED AND GILDED POTTERY FEMALE
FIGURINE*

THE SHANGHAI MUSEUM SHANGHAI CHINA

貼金彩繪陶女俑
上海博物館 上海 中國



PAINTED POTTERY FEMALE FIGURE
THE XIAN MUSEUM XIAN
CHINA

彩繪女俑
西安博物院 西安 中國



PAINTED POTTERY FEMALE FIGURINE WITH SINGLE-POLE BUN
THE LUOYANG MUSEUM LUOYANG CHINA

彩繪單刀髻女俑
洛陽博物館 洛陽 中國



THE ART INSTITUTE OF CHICAGO CHICAGO USA



THE SHAANXI HISTORY MUSEUM XIAN CHINA

陝西歷史博物館 西安 中國

SANCAI (三彩, “THREE COLOURS”)

DECORATION ON CHINESE POTTERY

TANG TOMB FIGURES

“TANG SANCAI”, “唐三彩”

COLOURS

BROWN, GREEN AND CREAMY OFF WHITE

POLYCHROME EFFECT AGENTS

COPPER (GREEN)

IRON (BROWNISH YELLOW)

MANGANESE AND COBALT (BLUE)

OTHERS

SANCAI CERAMICS

WHITE CLAY COATED WITH COLORED GLAZE

FIRED AT 800 DEGREES C.



THE XIAN MUSEUM XIAN CHINA

三彩騰空馬
西安博物院 西安 中國



PAINTED POTTERY MUSICIAN ON HORSEBACK
THE XIAN MUSEUM XIAN CHINA

彩繪騎馬技樂俑
西安博物院 西安 中國



CLAY FIGURE OF A HORSEWOMAN
THE LIEBIGHAUS FRANKFURT GERMANY

THE MUSEUM OF ORIENTAL ART TURIN ITALY





*PAINTED POTTERY MUSICIAN ON
HORSEBACK*
THE XIAN MUSEUM XIAN CHINA

彩繪騎馬技樂俑
西安博物院 西安 中國



*POLYCHROME GLAZED POTTERY FIGURINE OF
EQUESTRIENNE*
THE SHANGHAI MUSEUM SHANGHAI CHINA

彩色釉陶騎馬女俑
上海博物館 上海 中國

PAINTED FEMALE HORSE RIDER WITH POINTED HAT
THE SHAANXI HISTORY MUSEUM XIAN CHINA

彩繪帷帽女騎俑
陝西歷史博物館 西安 中國



TRI-COLORED GLAZED POTTERY HORSE-RIDING FEMALE FIGURINE
THE QIANLING MUSEUM SHAANXI CHINA

三彩女騎馬俑
乾陵博物館 陝西 中國

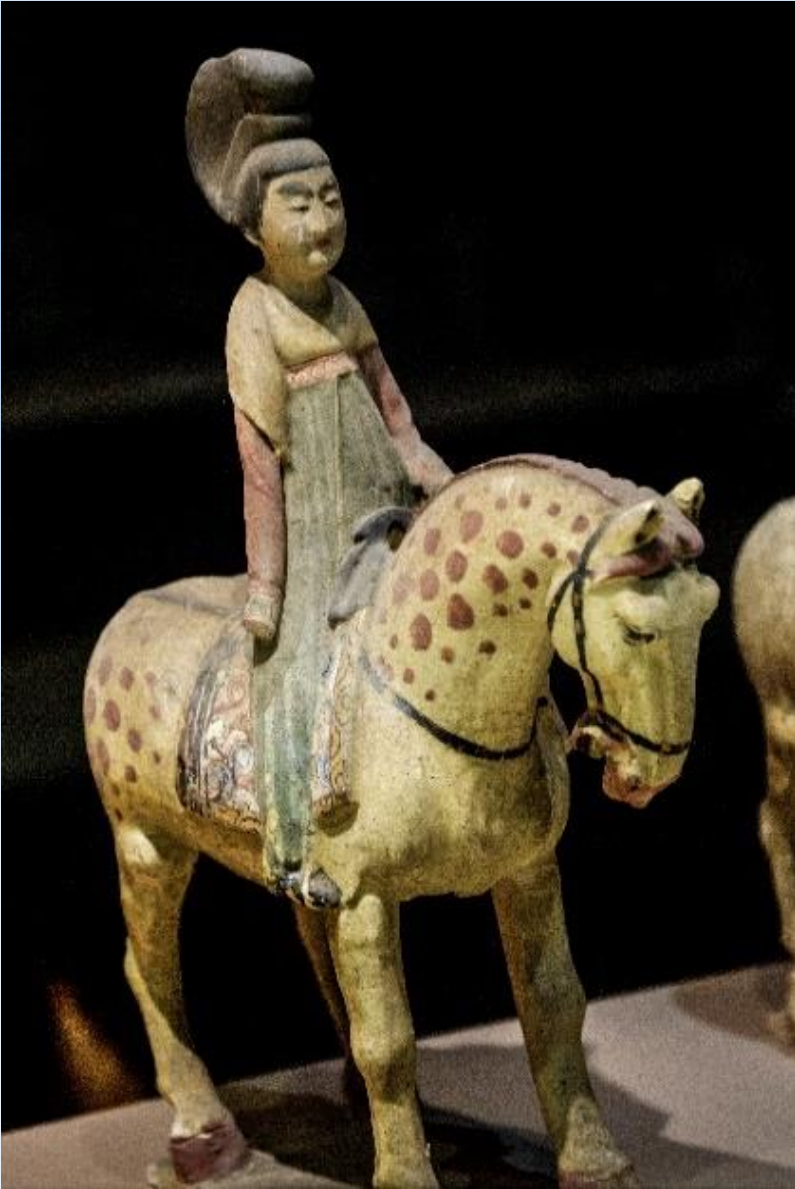
THE ZHAOLING MUSEUM SHAANXI CHINA

高髻女騎馬俑
昭陵博物館 陝西 中國



THE ZHAOLING MUSEUM SHAANXI CHINA

裹巾女騎馬俑
昭陵博物館 陝西 中國





POLYCHROME GLAZED 彩色釉陶

TRI-COLORED FEMALE FIGURE
THE SHAANXI HISTORY MUSEUM
XIAN CHINA

三彩女立俑
陝西歷史博物館 西安 中國



*POLYCHROME GLAZED POTTERY FIGURINE WITH A
PARROT ON HAND*
THE SHANGHAI MUSEUM SHANGHAI CHINA

彩色釉陶托鸚鵡女俑
上海博物館 上海 中國



*POLYCHROME GLAZED POTTERY FIGURINE OF
SEATED WOMAN*
THE SHANGHAI MUSEUM SHANGHAI CHINA

彩色釉陶女坐俑
上海博物館 上海 中國



TRI-COLORED FEMALE FIGURE MAKING UP HERSELF
THE SHAANXI HISTORY MUSEUM XIAN CHINA

三彩梳妝女坐俑
陝西歷史博物館 西安 中國



THE QIANLING MUSEUM SHAANXI CHINA

乾陵博物館 陝西 中國



THE ZHAOLING MUSEUM SHAANXI
CHINA

舞俑
昭陵博物館 陝西 中國



*GROUP OF FEMALE MUSICIANS AND
DANCERS*
THE ASHMOLEAN MUSEUM OXFORD
ENGLAND



FIGURINE OF THREE-COLOR GLAZED CERAMIC HU MAN
QIANLING MUSEUM SHAANXI CHINA

唐三彩雙垂髻女胡人俑
乾陵博物館 陝西 中國



THE MUSEUM OF ORIENTAL ART
TURIN ITALY



WOMAN HOLDING DOG
THE VICTORIA AND ALBERT MUSEUM
LONDON ENGLAND

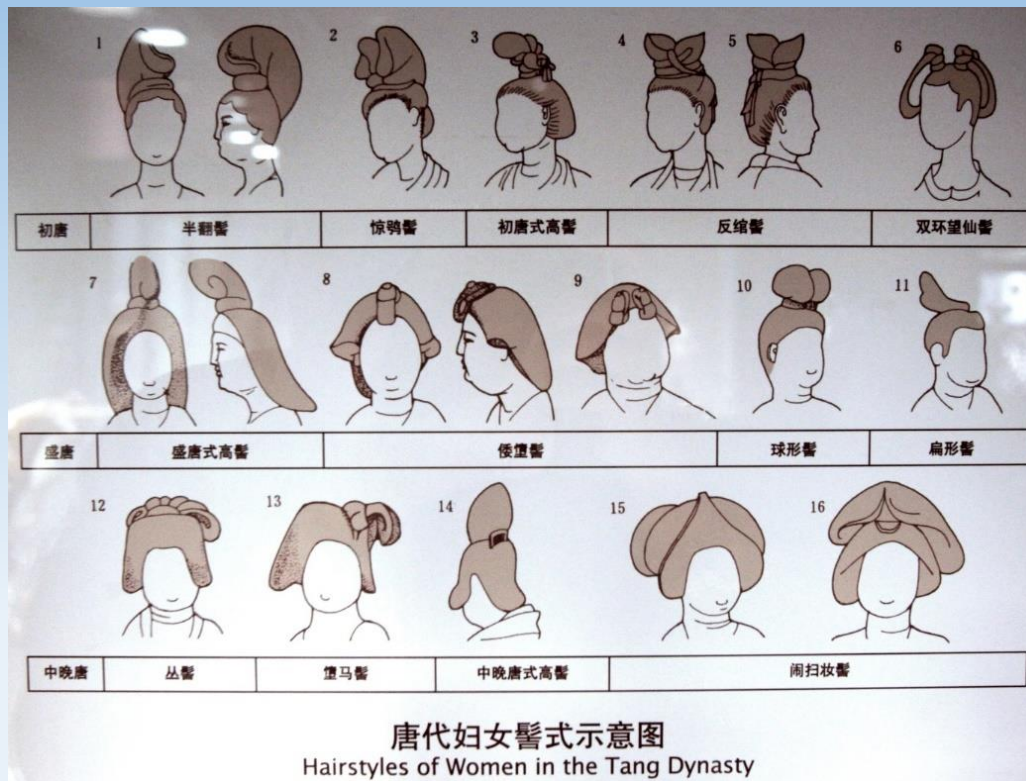


TRI-COLORED FEMALE SHENG PLAYER
THE SHAANXI HISTORY MUSEUM XIAN CHINA

三彩吹笙女坐俑
陝西歷史博物館 西安 中國

HAIRSTYLES OF WOMEN IN THE TANG DYNASTY

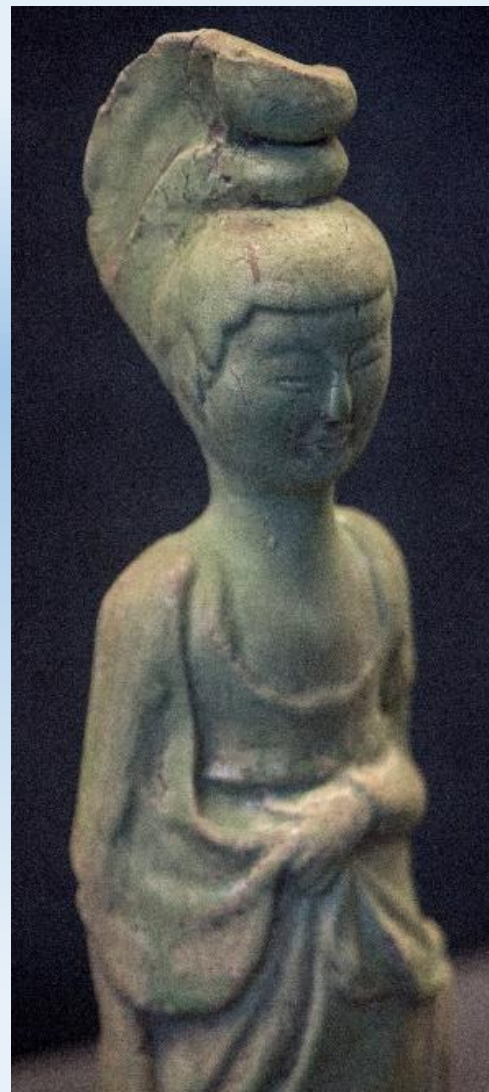
唐代婦女髻式





*PAINTED POTTERY FEMALE FIGURINE WITH
SINGLE-POLE BUN*
THE LUOYANG MUSEUM LUOYANG CHINA

彩繪單刀髻女俑
洛陽博物館 洛陽 中國



GREEN GLAZED POTTERY FEMALE FIGURINE
THE LUOYANG MUSEUM LUOYANG CHINA

綠釉陶女俑
洛陽博物館 洛陽 中國



PAINTED POTTERY MAID
THE LUOYANG MUSEUM LUOYANG
CHINA

彩繪陶女侍俑
洛陽博物館 洛陽 中國

COLOURED POTTERY FEMALE FIGURINE
THE SHANGHAI MUSEUM SHANGHAI CHINA

彩繪陶女俑
上海博物館 上海 中國



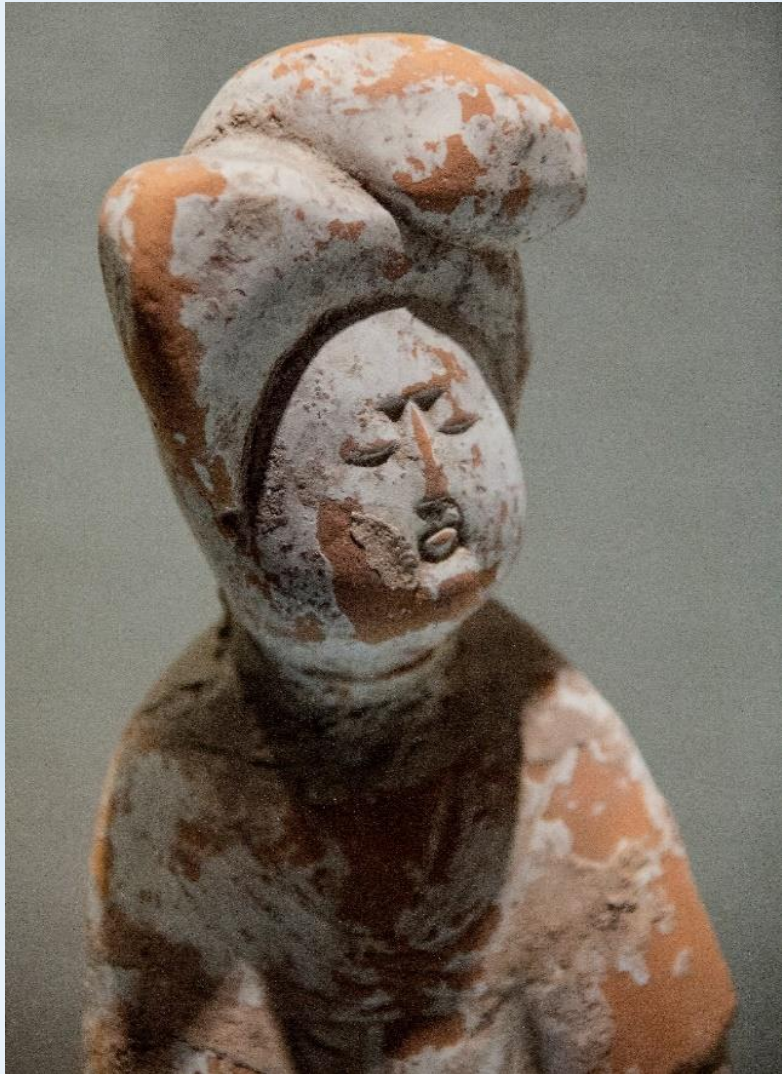
PAINTED POTTERY LADY
THE XIAN MUSEUM XIAN CHINA

彩繪仕女俑
西安博物院 西安 中國



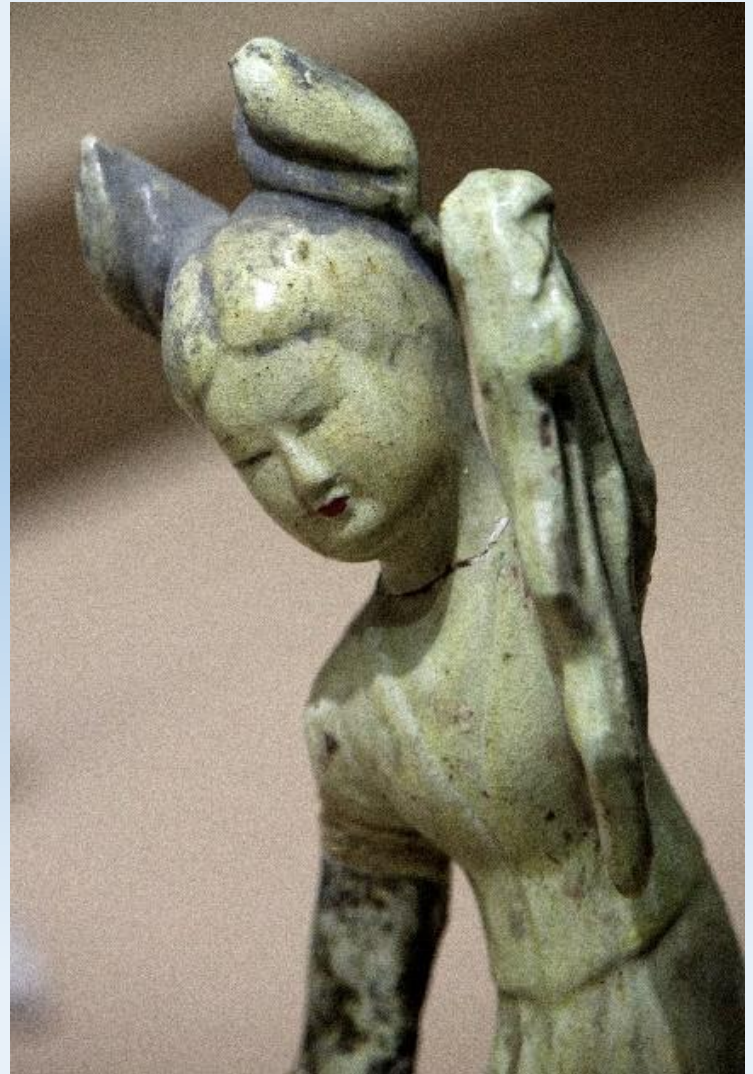
PAINTED POTTERY FEMALE FIGURE
THE XIAN MUSEUM XIAN CHINA

彩繪仕女俑
西安博物院 西安 中國



RED POTTERY FEMALE FIGURINE
THE HENAN MUSEUM ZHENGZHOU CHINA

红陶女俑
河南博物院 鄭州 中國



THE ZHAOLING MUSEUM SHAANXI CHINA

舞俑
昭陵博物館 陝西 中國



PAINTED POTTERY LADY
THE XIAN MUSEUM XIAN CHINA

彩繪仕女俑
西安博物院 西安 中國



PAINTED FEMALE FIGURE HOLDING BABY IN HER ARMS
THE SHAANXI HISTORY MUSEUM XIAN CHINA

彩繪抱嬰女立俑
陝西歷史博物館 西安 中國

PAINTED POTTERY LADY
THE XIAN MUSEUM XIAN CHINA

彩繪仕女俑
西安博物院 西安 中國



PAINTED FEMALE FIGURE
THE SHAANXI HISTORY MUSEUM XIAN CHINA

彩繪女立俑
陝西歷史博物館 西安 中國





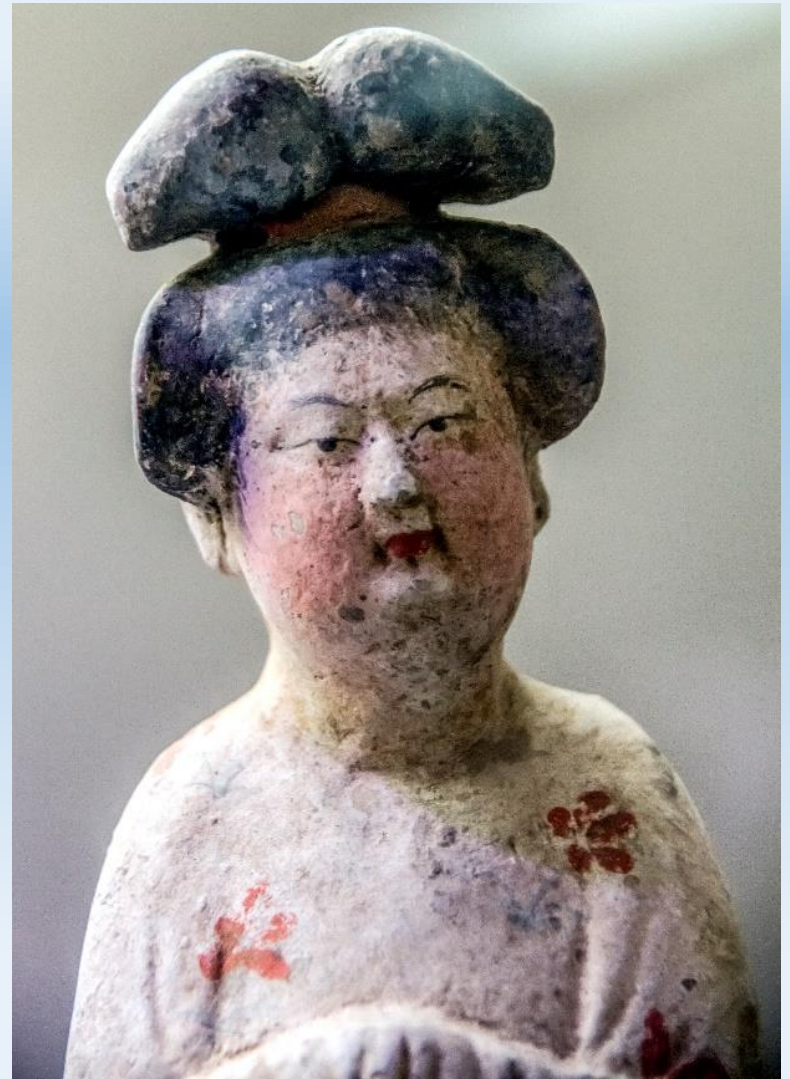
LADY, COLOURED POTTERY
THE SHANGHAI MUSEUM
SHANGHAI CHINA

陶仕女彩繪俑
上海博物館 上海 中國



PAINTED POTTERY STANDING NOBLE LADY FIGURINE
THE QIANLING MUSEUM SHAANXI CHINA

彩繪仕女立俑
乾陵博物館 陝西 中國



THE MUSEUM OF ORIENTAL ART TURIN ITALY



WOMAN HOLDING DOG
THE VICTORIA AND ALBERT MUSEUM LONDON
ENGLAND

三彩陶抱犬女俑

WOMAN HOLDING MIRROR
THE VICTORIA AND ALBERT MUSEUM LONDON
ENGLAND

三彩陶持鏡女俑





PAINTED FEMALE DANCER WITH DOUBLE RINGS ON HEAD
THE SHAANXI HISTORY MUSEUM XIAN CHINA

彩繪雙環髻女舞俑
陝西歷史博物館 西安 中國



VISION

2012

BRONZE

**THE HONG KONG POLYTECHNIC UNIVERSITY
HONG KONG**

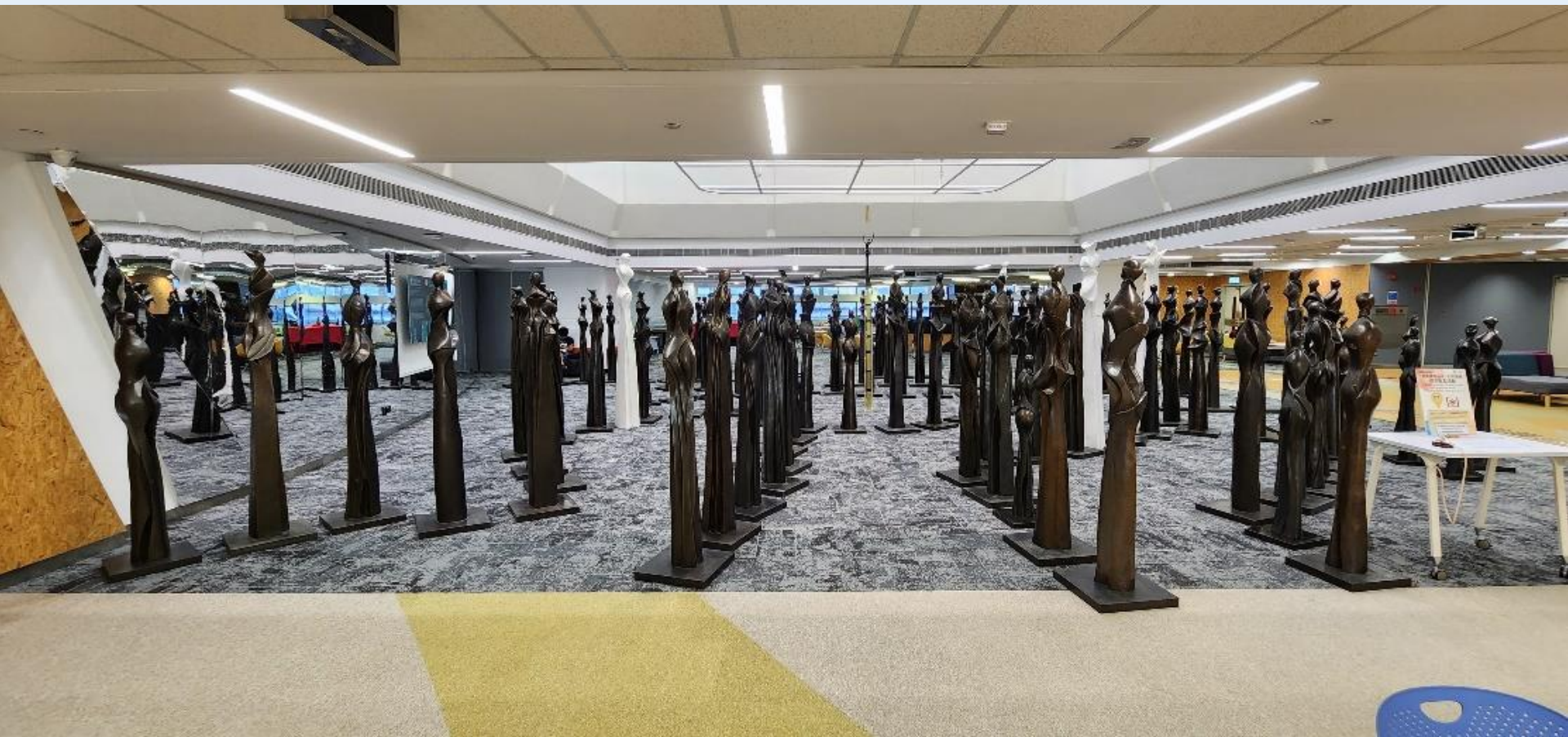
MY MODERN WOMAN

DANCER

2015

BRONZE





111 DREAMS – 2023

111 SCULPTURES EXHIBITION IN THE HONG KONG UNIVERSITY LIBRARY



香港大學深圳醫院 THE HKU SHENZHEN HOSPITAL PROPOSAL

PROPOSAL OF HKU SHENZHENG HOSPITAL



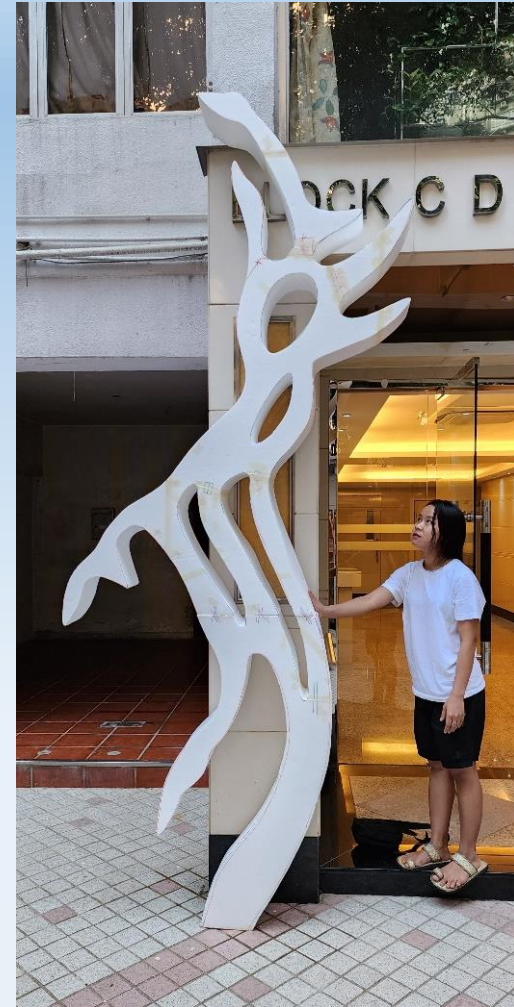
ALL SCULPTURES ARE OF DIFFERENT SHAPE, BRONZE AND DARK GREEN COLOUR
THEIR ORIENTATION TO BE DETERMINED

MODELS

2.5 M HIGH



3 M HIGH



THANK YOU